

FOR LEASE / SALE

PERIMETER HILL

**3340 Perimeter Hill
Nashville, TN 37211**



**Class "A"
Office
Space**

**Custom
Real Estate
Solutions**



BRUTALIST ARCHITECTURE

The Legacy and Impact

Brutalist architecture emerged in the mid-20th century, characterized by its stark, geometric forms and the extensive use of raw concrete, also known as *béton brut*. This architectural style grew out of modernist ideals, emphasizing functionality, honesty of materials, and structural clarity. Often associated with post-war reconstruction in Europe, Brutalism was seen as a bold, utilitarian response to housing shortages and urban development needs. The aesthetic, while divisive, intentionally rejected ornamentation in favor of a monumental and imposing presence, reflecting social and political ideals of equality and accessibility, especially in civic and public buildings.

Globally, Brutalist architecture holds a significant place in architectural history as it reshaped urban landscapes and influenced debates around form, utility, and social purpose. Though initially controversial due to its austere appearance, Brutalism has seen renewed appreciation for its sculptural qualities and bold experimentation. Four influential Brutalist buildings include the Barbican Estate in London (UK), known for its vast residential complex and cultural facilities; Boston City Hall in the U.S., an iconic example of civic Brutalism; Habitat 67 in Montreal (Canada), a visionary modular housing project by Moshe Safdie; and Trellick Tower in London, designed by Ernő Goldfinger, a symbol of social housing ambition and Brutalist design principles.

Barbican Estate, London, UK

Aerial view showcasing the complex's distinctive concrete towers and terraced walkways.

Boston City Hall, Boston, USA

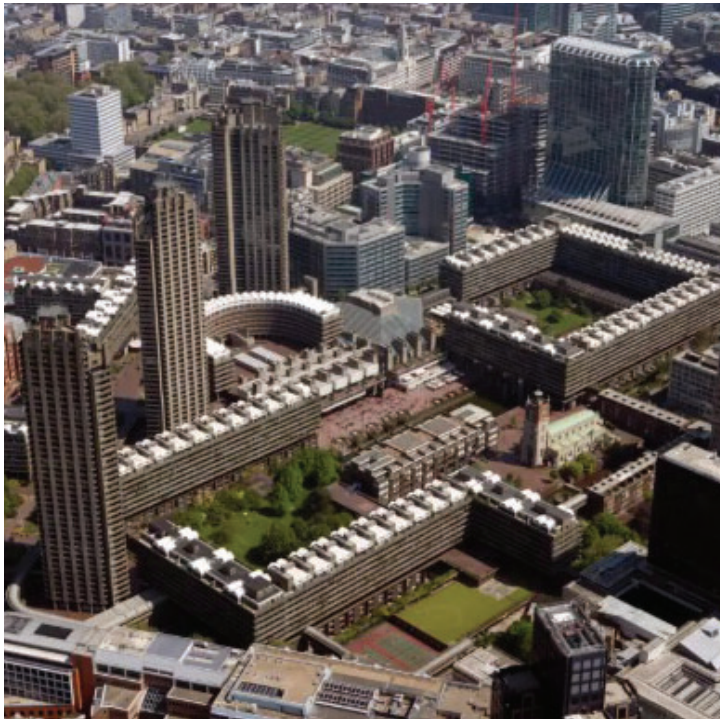
The building's imposing concrete façade and angular design are characteristic of Brutalist architecture.

Habitat 67, Montreal, Canada

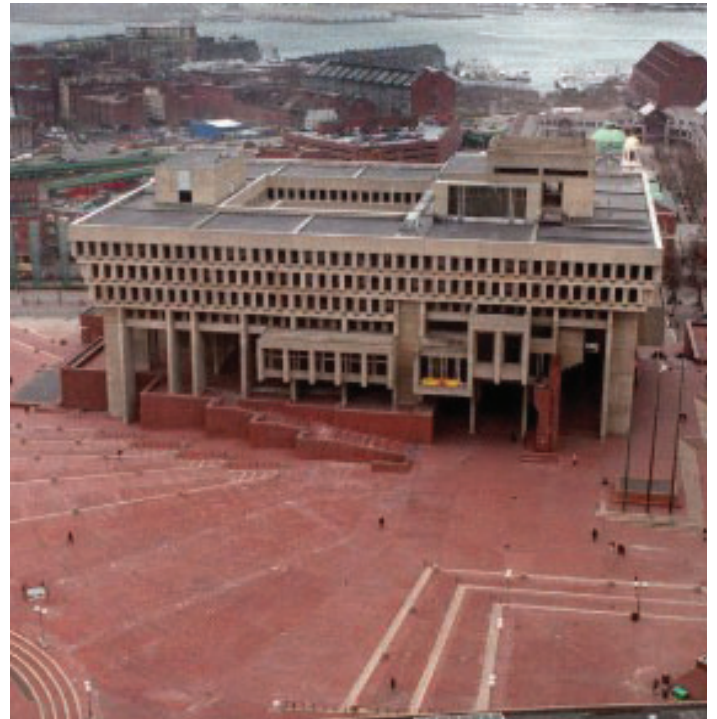
An innovative housing complex composed of stacked concrete modules, designed by architect Moshe Safdie.

Trellick Tower, London, UK

A 31-story residential tower with a separate service tower, designed by architect Ernő Goldfinger.



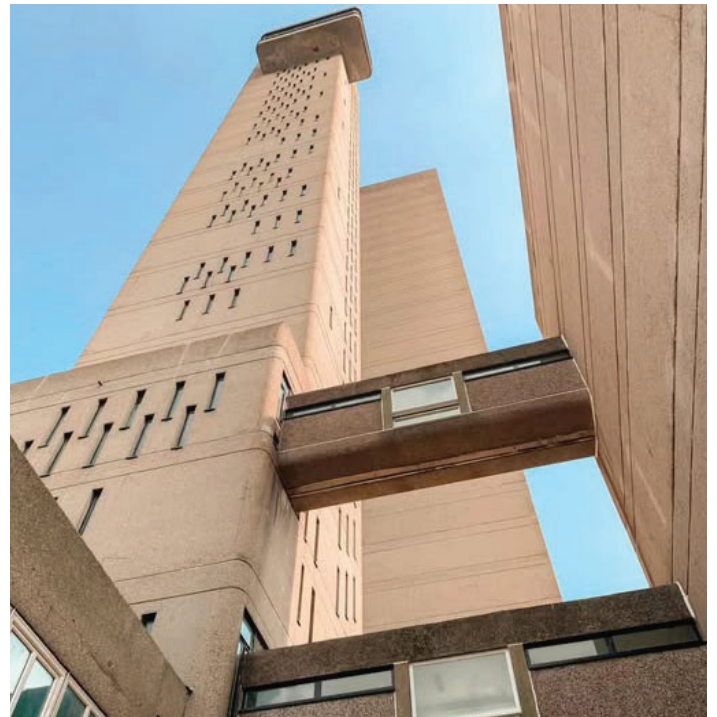
Barbican Estate



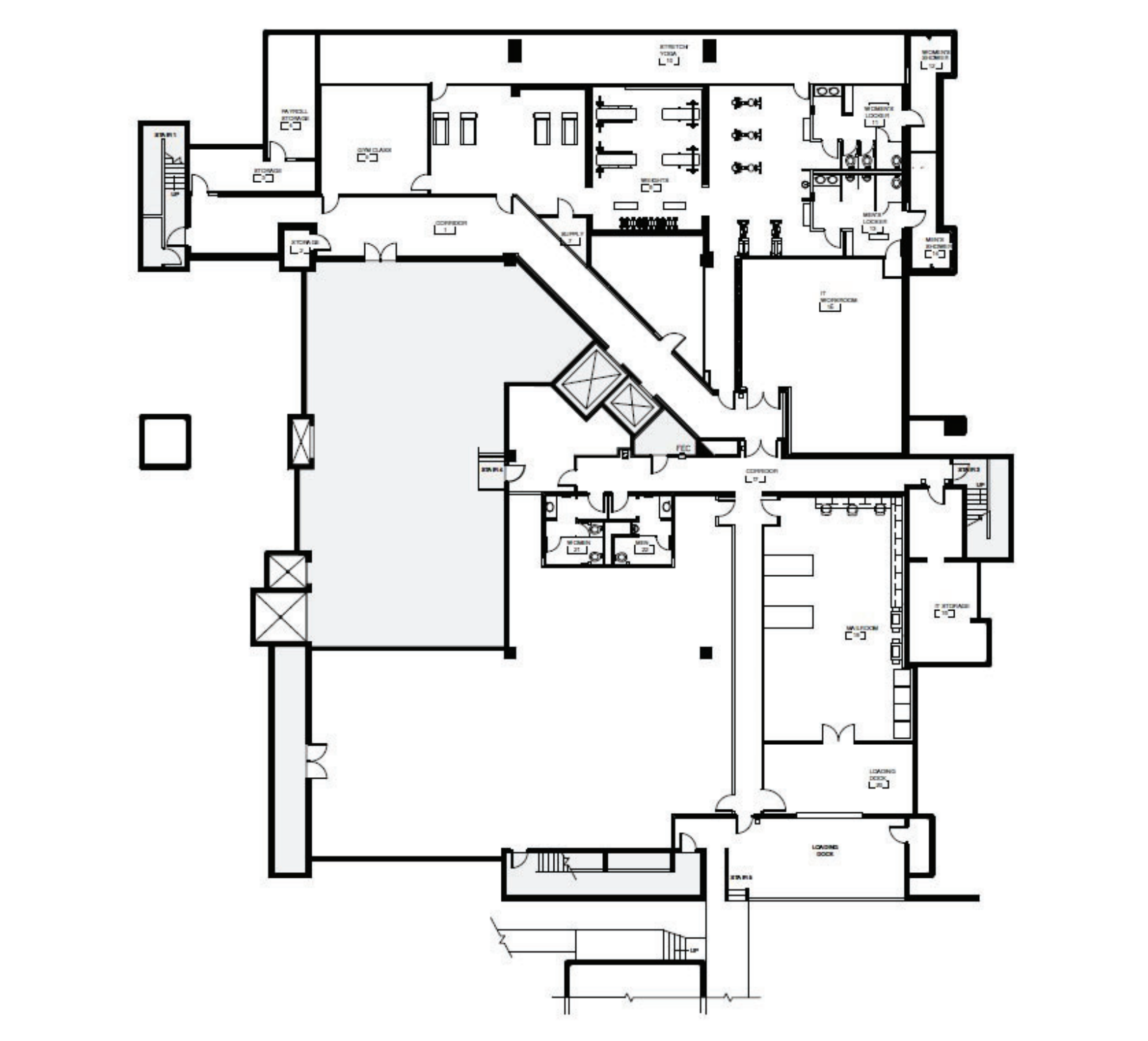
Boston City Hall



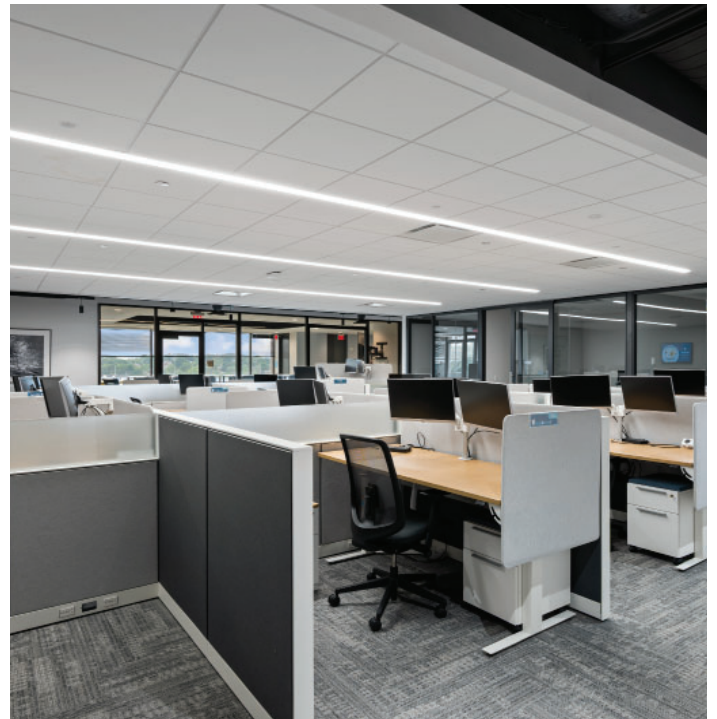
Habitat 67



Trellick Tower

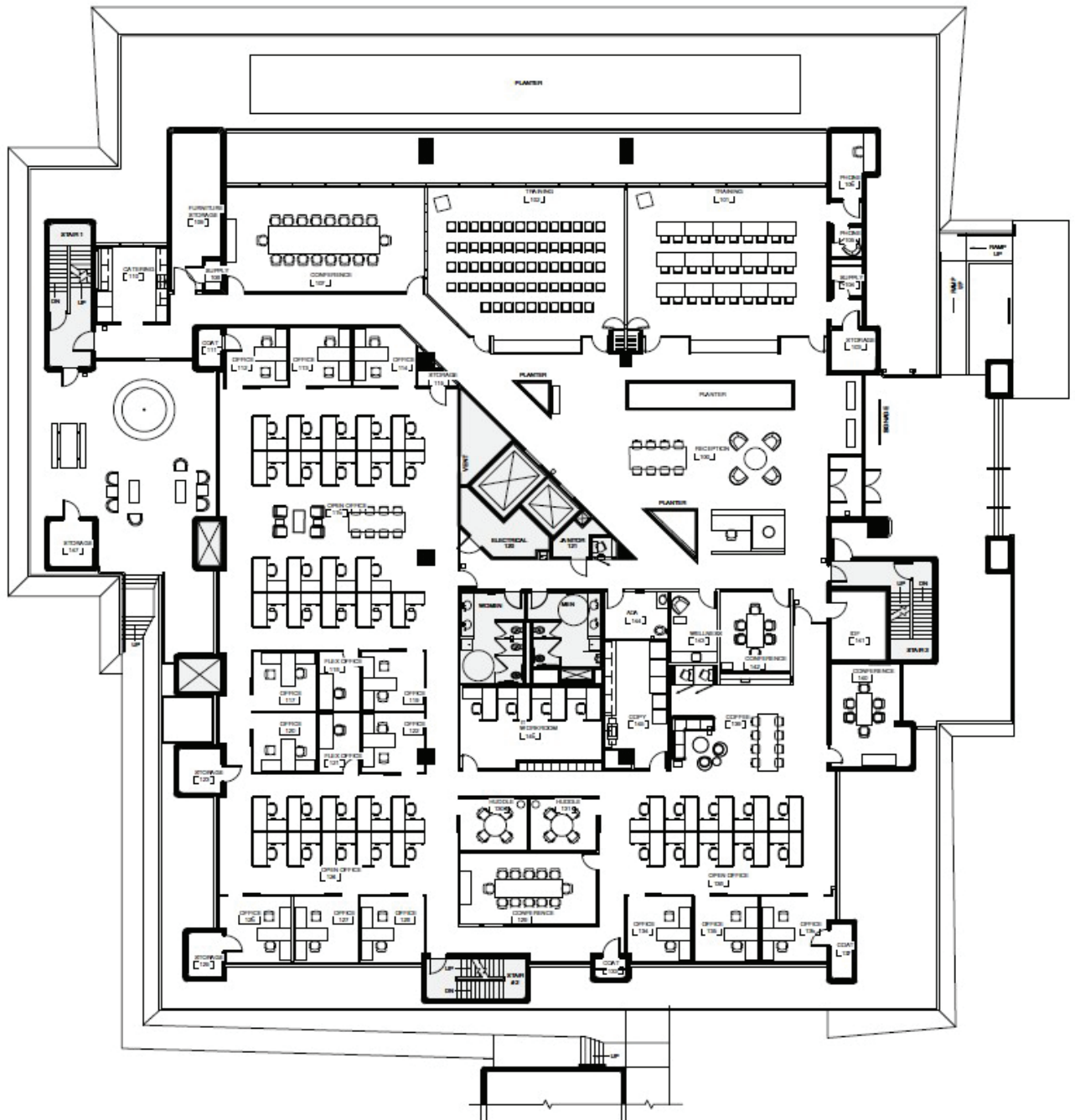


GROUND LEVEL



FLOORPLANS



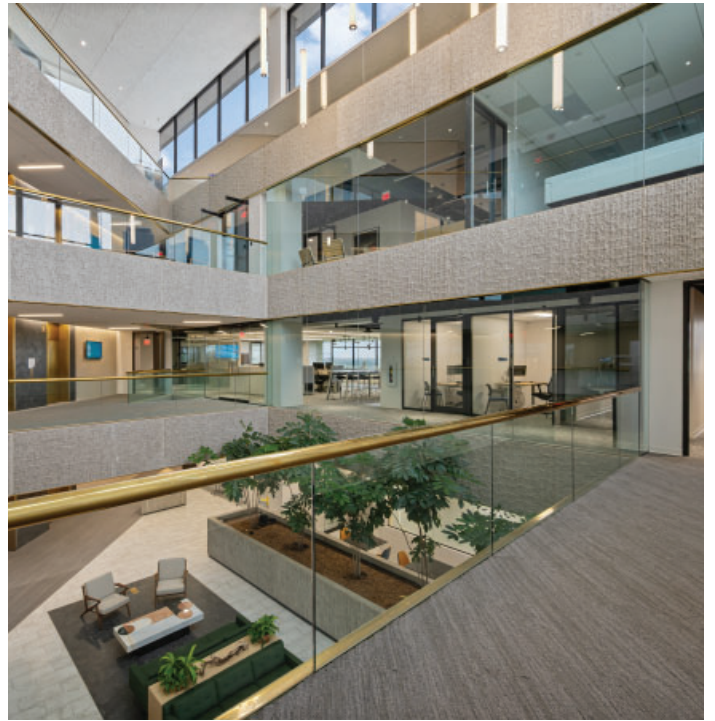
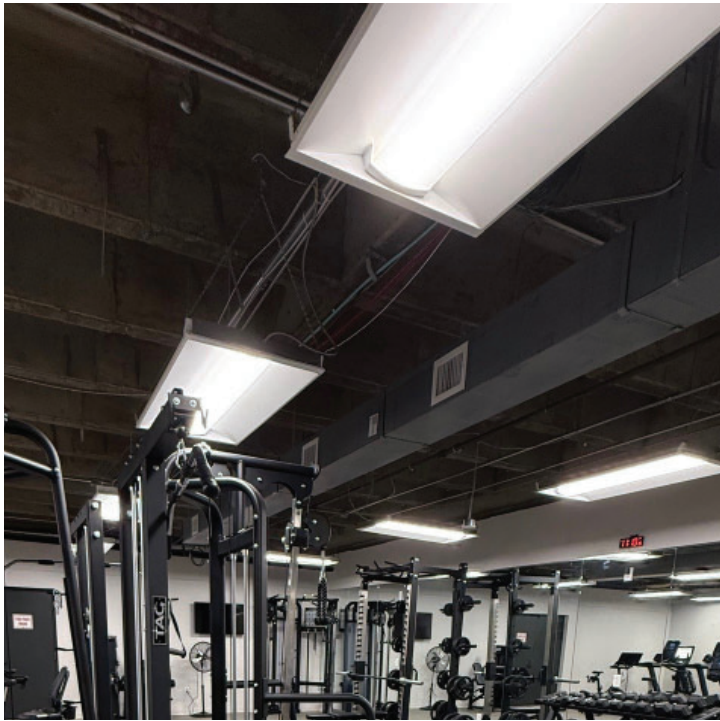


FIRST LEVEL

FLOORPLANS

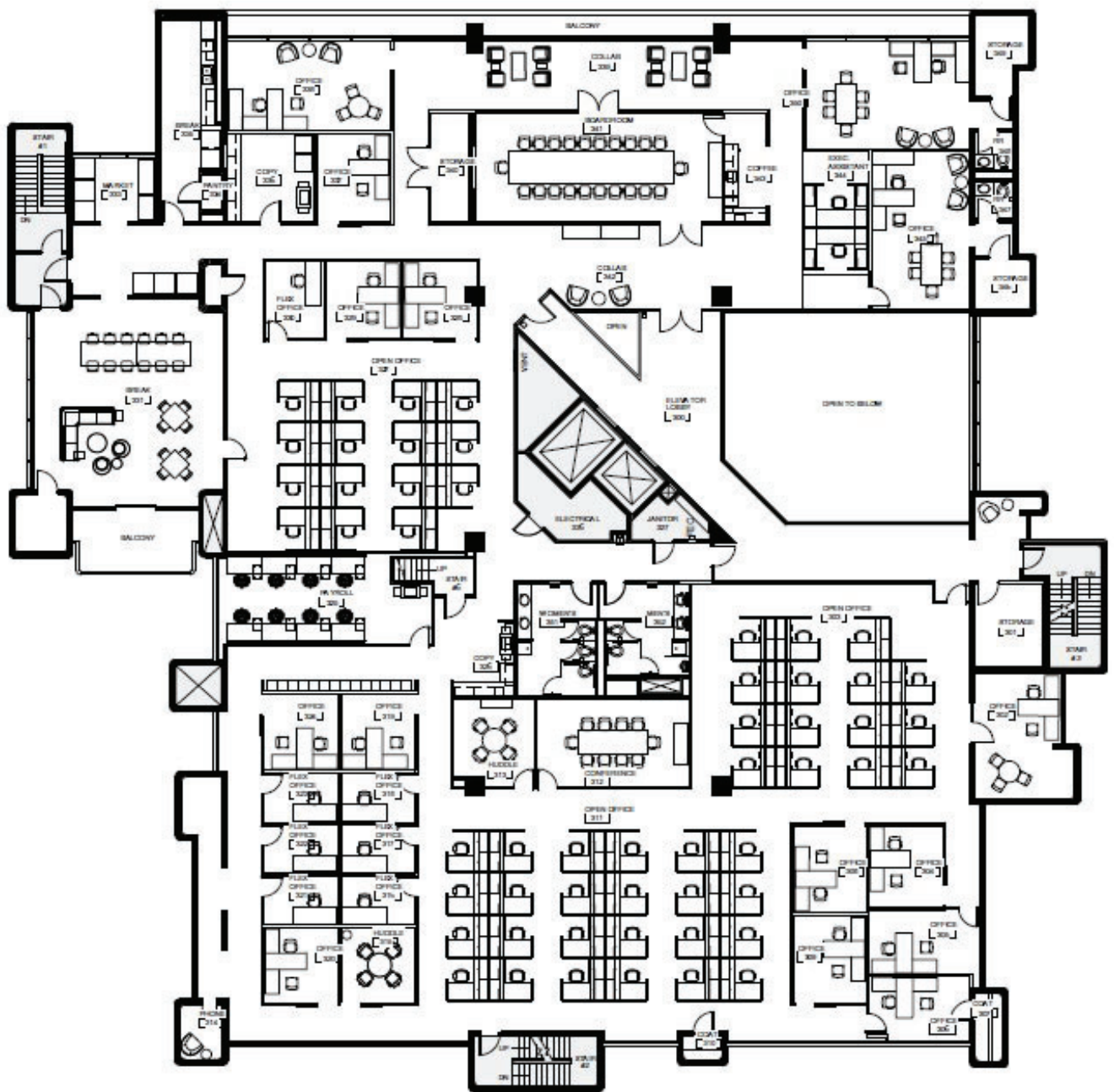


SECOND LEVEL



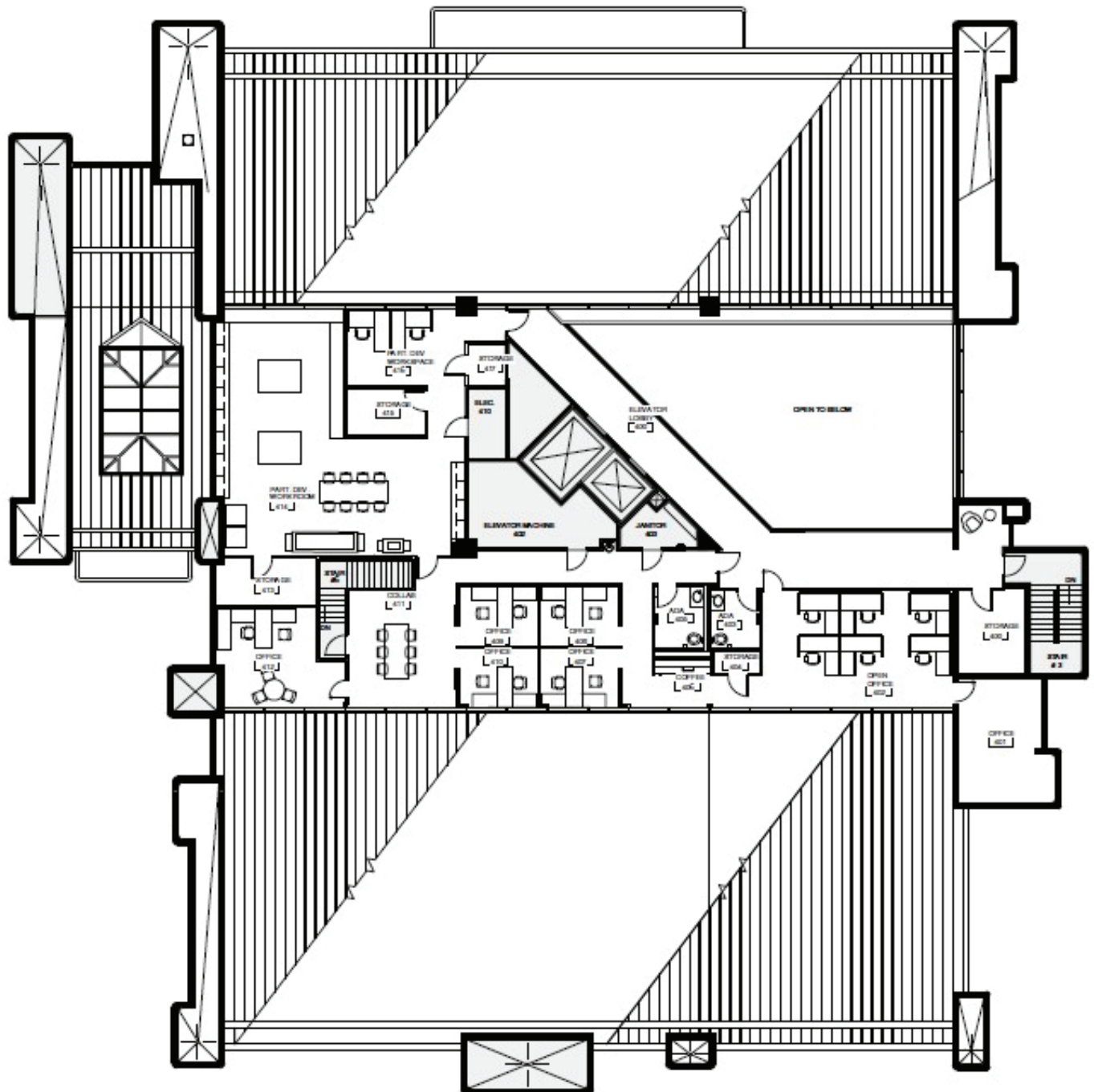
FLOORPLANS





THIRD LEVEL

FLOORPLANS



MEZZANINE



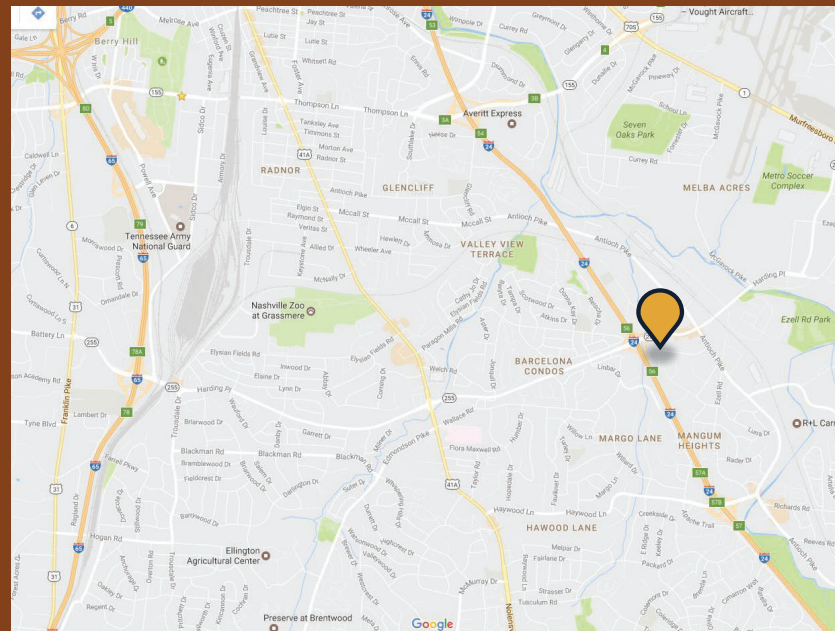


FEATURES

- New Energy Efficient Building Systems
- 5/1,000 Parking Ratio
- High-end Finishes
- Aggressive rental rates
- Monument signage available
- Newly renovated common areas, restrooms and landscaping
- Nashville Skyline Views
- High-end audio/visual and security
- Multiple Media/Conference/Training Rooms
- Fitness Facility with weights and Nautilus

LOCATION

Minutes from I-24, I-65, I-440, Briley Parkway, and Downtown Nashville
Close proximity to BNA Airport, restaurants, banks, and retail



BROKER INFORMATION

Land Deleot
Land@EquitableTN.com
615.948.6807

Victoria Fields
Victoria@EquitableTN.com
615.424.4350

EQUITABLE
PROPERTY COMPANY

Custom
Real Estate
Solutions