

3.68 Acres Hwy 90, Gautier

Highway 90, Gautier, MS 39553

Listing ID: 30754378
 Status: Active
 Property Type: Vacant Land For Sale
 Possible Uses: Office, Retail
 Gross Land Area: 3.68 Acres
 Sale Price: \$350,000
 Unit Price: \$95,108 Per Acre
 Sale Terms: Cash to Seller



Overview/Comments

Commercial undeveloped land located along Highway 90, a major commercial thoroughfare between Ocean Springs and Pascagoula. This property consists of 4 commercially zoned parcels and has road frontage along three sides. This property is not in a flood zone (X-500) and has excellent visibility from Highway 90.

More Information Online

<http://mscrex.catylist.com/listing/30754378>

QR Code

Scan this image with your mobile device:



General Information

Tax ID/APN:	87010070.000	Zoning:	C-2 AND C-3
Possible Uses:	Office, Retail, Retail-Pad	Sale Terms:	Cash to Seller

Area & Location

Property Visibility:	Excellent	Feet of Frontage:	1,156
Largest Nearby Street:	Oak Street	Traffic/Vehicle Count:	35,000

Land Related

Lot Frontage:	1136	Water Service:	Municipal
Available Utilities:	Water, Sewer	Sewer Type:	Municipal

Location

Address: Highway 90, Gautier, MS 39553
 County: Jackson
 MSA: Gulfport-Biloxi



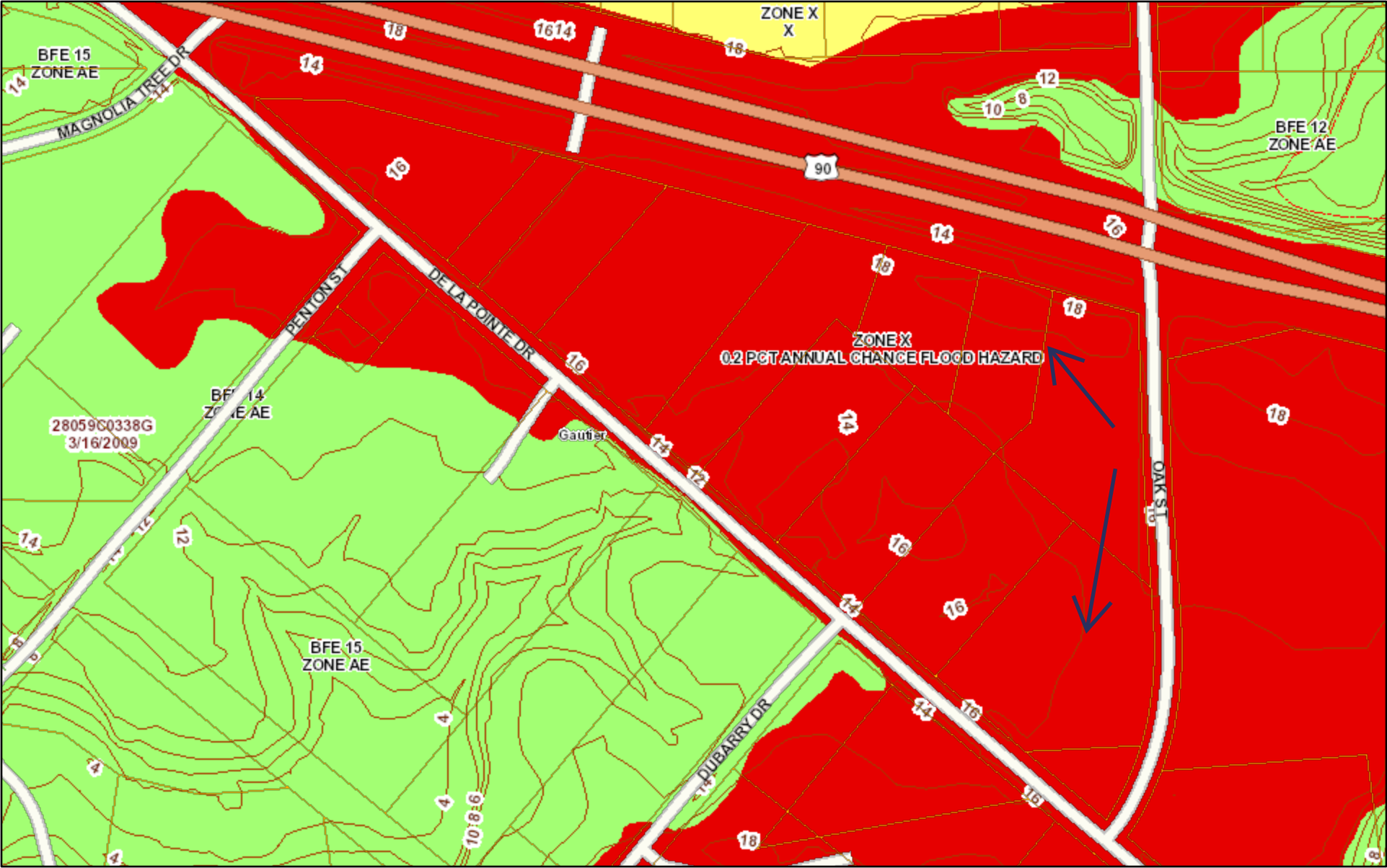
Property Images



001



Flood Map 0 Hwy 90, Gautier, MS 39553



August 5, 2021

Parcels	CenterLines	Base Flood Elevation	Contours 5ft	Flood Zone
Major	City Limits	FIRM Panels	Contours 2ft	X500
PrimaryRoads	LiMWA	Cobra Zone		A

Scale: 1:2,400

0 0.02 0.04 0.08 mi

0 0.03 0.07 0.13 km

Jackson County GIS



August 5, 2021

Wetlands

- Estuarine and Marine Deepwater
- Freshwater Forested/Shrub Wetland
- Lake
- Estuarine and Marine Wetland
- Freshwater Pond
- Other
- Freshwater Emergent Wetland
- Riverine

This map is for general reference only. The US Fish and Wildlife Service is not responsible for the accuracy or currentness of the base data shown on this map. All wetlands related data should be used in accordance with the layer metadata found on the Wetlands Mapper web site.

Oak, Gautier, MS 39553, Jackson County

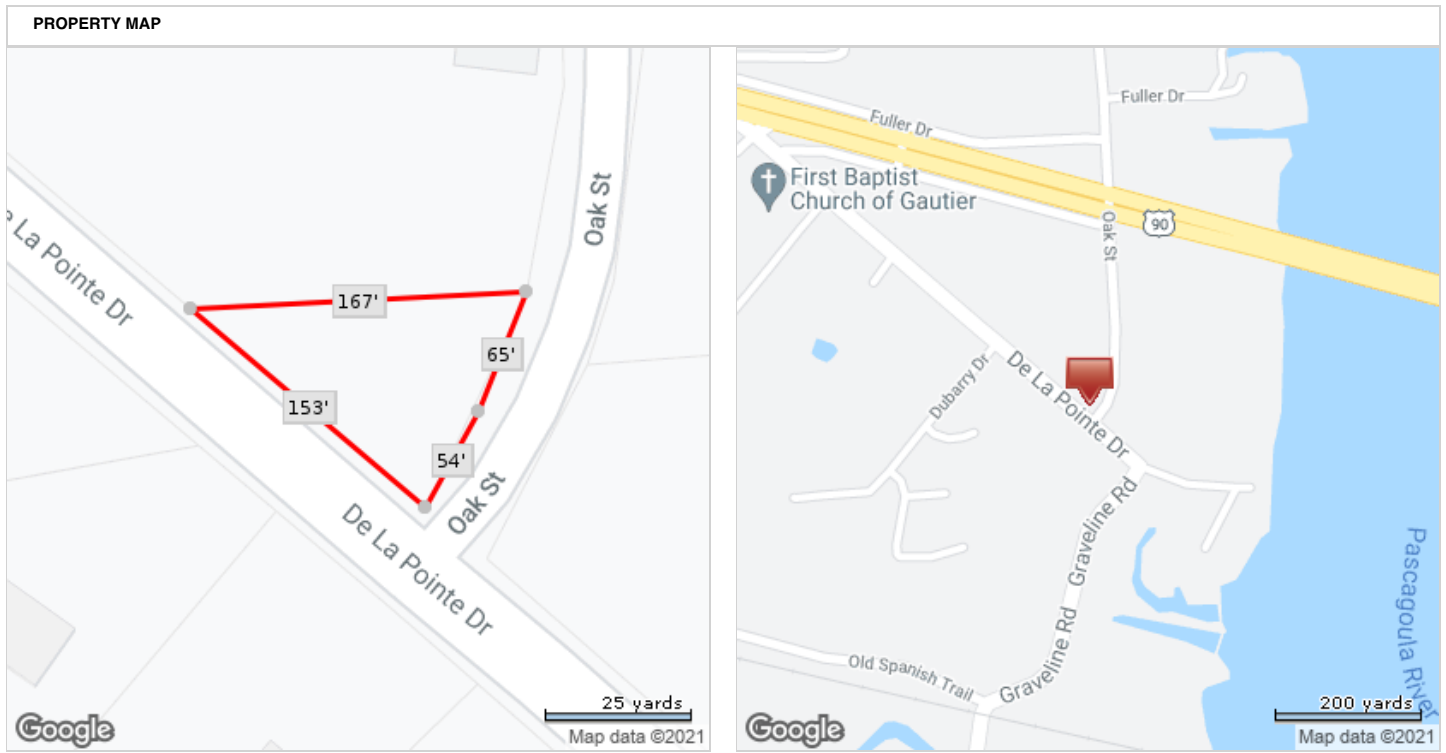
	Beds	Baths	Sale Price	Sale Date
	N/A	N/A	N/A	N/A
	Bldg Sq Ft	Lot Sq Ft	Yr Built	Type
	N/A	6,970	N/A	VCNT LND-NEC

LOCATION INFORMATION			
Census Tract	410.00	Township Range Sect	8S-6W-5
Subdivision	H River Oak		

TAX INFORMATION			
Tax Parcel Number	8-19-02-060.100	Block	H
Lot	11	Tax Area	3840
Legal Description	BEG NWC OAK ST & OLD HWY 90 NELYALG W/M OAK ST TO SEC L OT 11 BLKH RIVER OAK S/D WLY ALG S/L LOT 11 SAID S/D 175' M/L TO N/M OLD HWY 90 SELY ALG SAID HWY 150' M/L TO POB DB 592-171 (20 MAP863.05-01)		

ASSESSMENT & TAX			
Assessment Year	2020	2019	2018
Assessed Value - Total	\$282	\$282	\$282
Assessed Value - Land	\$282	\$282	\$282
Market Value - Total	\$1,880	\$1,880	\$1,880
Market Value - Land	\$1,880	\$1,880	\$1,880
YOY Assessed Change (\$)	\$0	\$0	
YOY Assessed Change (%)	0%	0%	
Tax Year	Total Tax	Change (\$)	Change (%)
2018	\$41		
2019	\$41	\$0	0%
2020	\$41	-\$0	-0.92%

CHARACTERISTICS			
Land Use - CoreLogic	Vacant Land (NEC)	Lot Area	6,970
Land Use - State	Vacant Land Suitable For Devel	Lot Acres	0.16



*Lot Dimensions are Estimated

Hwy 90, Gautier, MS 39553, Jackson County

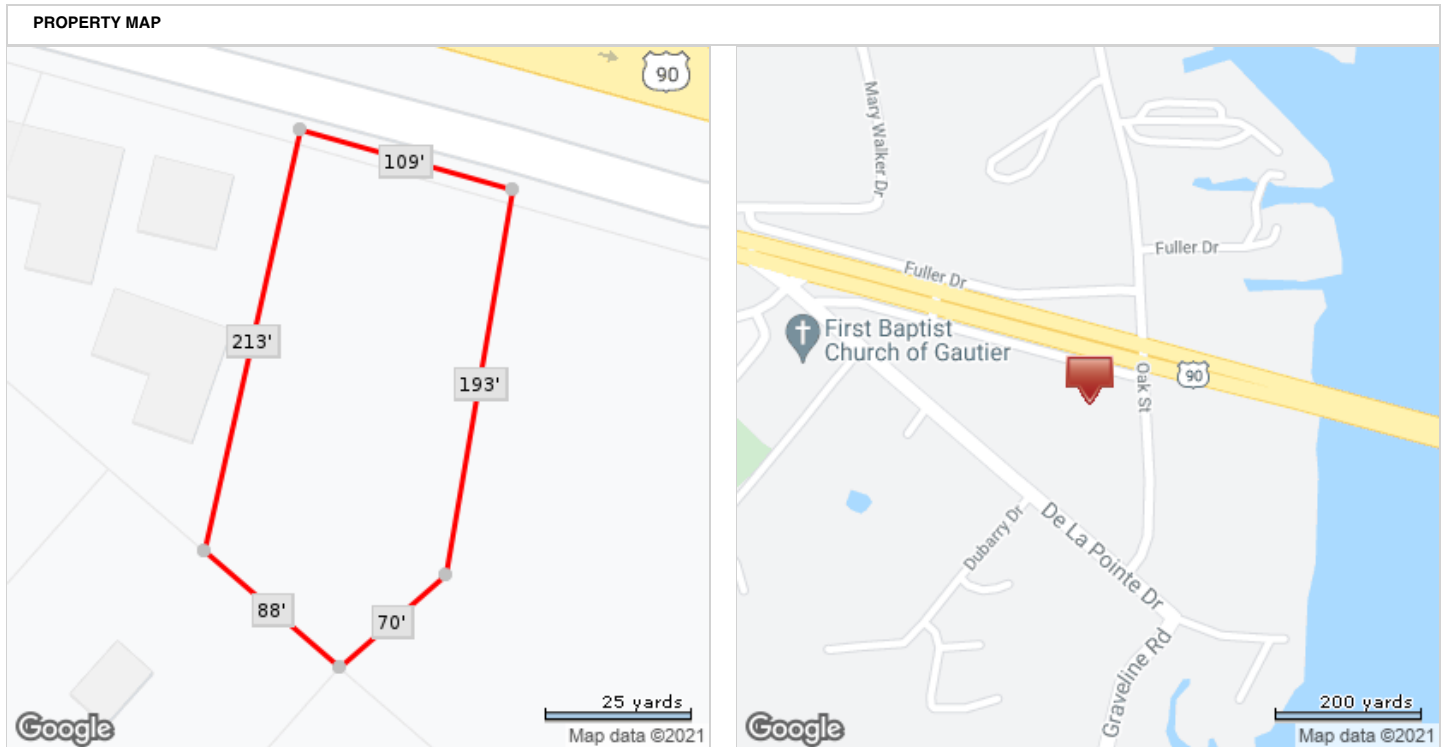
	Beds	Baths	Sale Price	Sale Date
	N/A	N/A	N/A	N/A
	Bldg Sq Ft	Lot Sq Ft	Yr Built	Type
	N/A	22,651	N/A	VCNT LND-NEC

LOCATION INFORMATION			
Census Tract	410.00	Township Range Sect	8S-6W-5
Subdivision	River Oaks Sub		

TAX INFORMATION			
Tax Parcel Number	8-70-10-070.000	Block	H
Lot	1	Tax Area	3840
Legal Description	COM NEC LOT 1 BLK H RIVER OAKS S/D N 75 DEG W ALG S/M REL OCATEDU S HWY 90 128.2' FOR POB S 14 DEG W 181.2' S 39 DEG W 70' TO S/S LOT 1 N 49 DEG W 88.5' N 14 DEG E 206.1' TO S/M U S HWY 90 S 75 DEG E 110' TO POB PT LOT 1 BLK H RIVER OAKS S/D DB 233-469 (18 MAP863.05-01)		


ASSESSMENT & TAX			
Assessment Year	2020	2019	2018
Assessed Value - Total	\$12,497	\$12,497	\$12,497
Assessed Value - Land	\$12,497	\$12,497	\$12,497
Market Value - Total	\$83,310	\$83,310	\$83,310
Market Value - Land	\$83,310	\$83,310	\$83,310
YOY Assessed Change (\$)	\$0	\$0	
YOY Assessed Change (%)	0%	0%	
Tax Year	Total Tax	Change (\$)	Change (%)
2018	\$1,835		
2019	\$1,835	\$0	0%
2020	\$1,818	-\$16	-0.88%

CHARACTERISTICS			
Land Use - CoreLogic	Vacant Land (NEC)	Lot Area	22,651
Land Use - State	Vacant Land Suitable For Devel	Lot Acres	0.52



*Lot Dimensions are Estimated

Hwy 90, Gautier, MS 39553, Jackson County

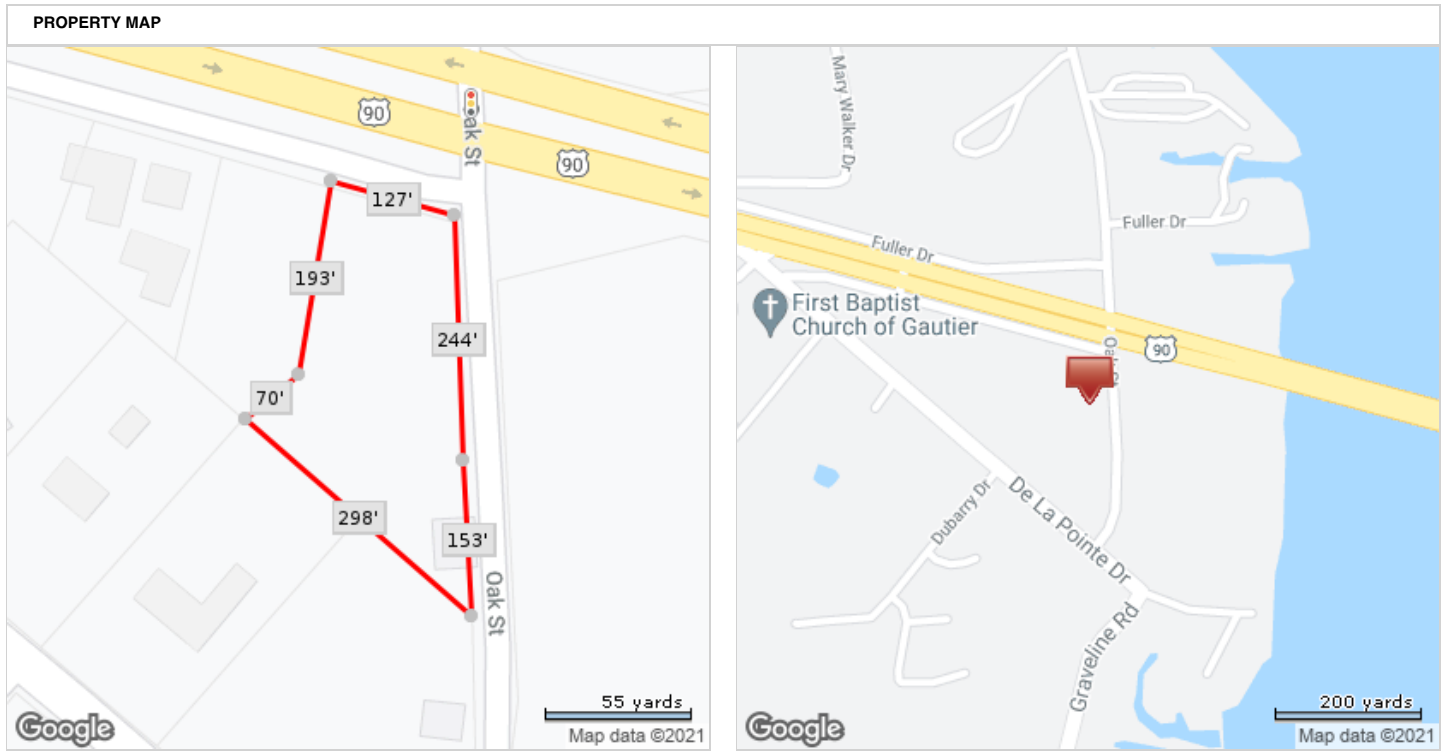
	Beds	Baths	Sale Price	Sale Date
	N/A	N/A	N/A	N/A
	Bldg Sq Ft	Lot Sq Ft	Yr Built	Type
	N/A	53,116	N/A	VCNT LND-NEC

LOCATION INFORMATION			
Census Tract	410.00	Township Range Sect	8S-6W-5
Subdivision	River Oaks Sub		

TAX INFORMATION			
Tax Parcel Number	8-70-10-071.000	Block	H
Lot	1	Tax Area	3840
Legal Description	BEG NEC LOT 1 BLK H RIVER OAKS S/D N 75 DEG W ALG S/M REL OCATEDU S HWY 90 128.2' S 14 DEG W 181.2' S 39 DEG W 70' TO S/L LOT 1 S 49 DEG E 300' TO W/M OAK ST NLY ALG SAID ST 388.2' TO POB PT LOT 1 BLK H RIVER OAK S S/D DB 195-412 (19 MAP863.05-01)		


ASSESSMENT & TAX			
Assessment Year	2020	2019	2018
Assessed Value - Total	\$30,414	\$30,414	\$30,414
Assessed Value - Land	\$30,414	\$30,414	\$30,414
Market Value - Total	\$202,760	\$202,760	\$202,760
Market Value - Land	\$202,760	\$202,760	\$202,760
YOY Assessed Change (\$)	\$0	\$0	
YOY Assessed Change (%)	0%	0%	
Tax Year	Total Tax	Change (\$)	Change (%)
2018	\$4,465		
2019	\$4,465	\$0	0%
2020	\$4,426	-\$39	-0.88%

CHARACTERISTICS			
Land Use - CoreLogic	Vacant Land (NEC)	Lot Area	53,116
Land Use - State	Vacant Land Suitable For Devel	Lot Acres	1.2194



*Lot Dimensions are Estimated

2807 Oak St, Gautier, MS 39553-6307, Jackson County

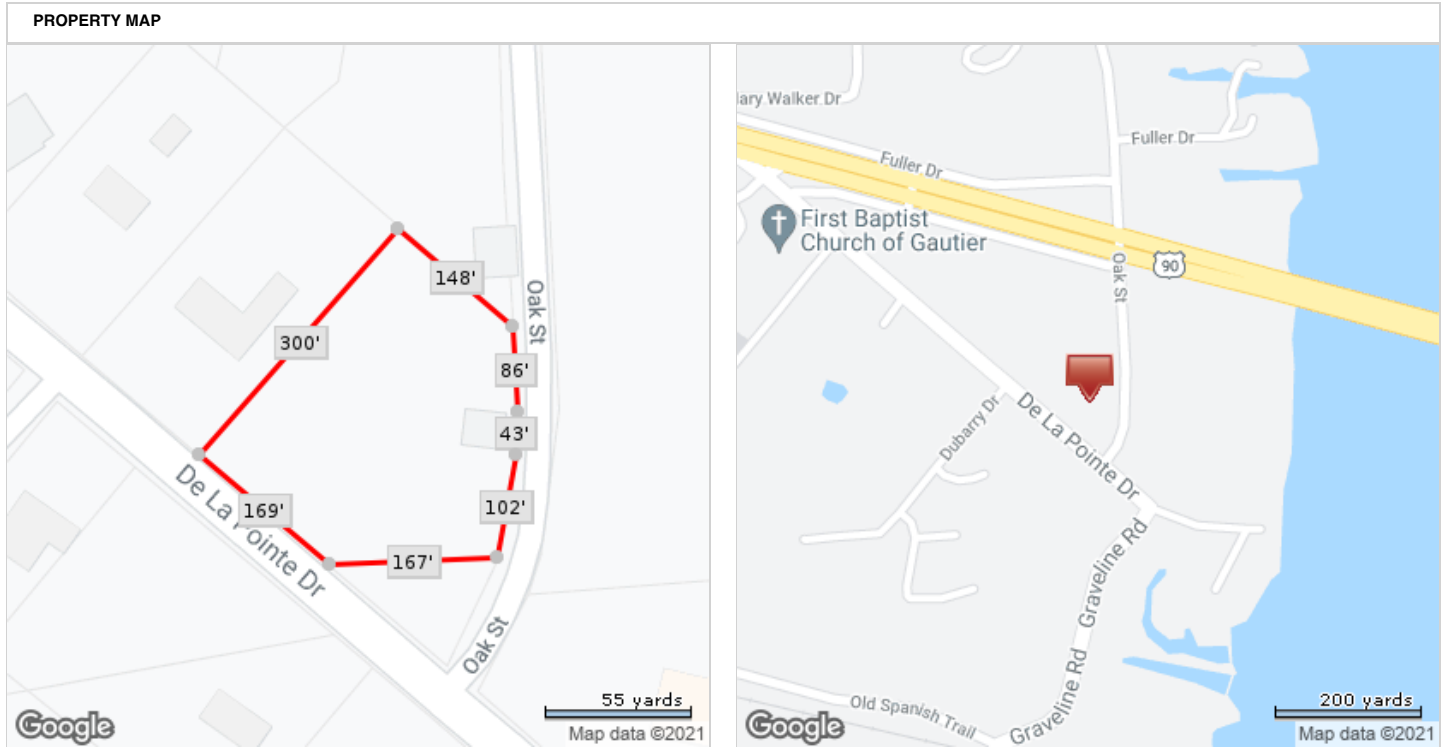
	Beds	Baths	Sale Price	Sale Date
	N/A	N/A	N/A	N/A
	Bldg Sq Ft	Lot Sq Ft	Yr Built	Type
	N/A	77,537	N/A	VCNT LND-NEC

LOCATION INFORMATION			
Census Tract	410.00	Subdivision	River Oaks Sub
Carrier Route	H063	Township Range Sect	8S-6W-5

TAX INFORMATION			
Tax Parcel Number	8-70-10-079.000	Block	H
Lot	10	Tax Area	3840
Legal Description	LOT 10&11 BLK H RIVER OAKS S/ D SEC 2-8-6 DB 592-171 (22M MAP 863.05-01)		

ASSESSMENT & TAX			
Assessment Year	2020	2019	2018
Assessed Value - Total	\$1,565	\$1,565	\$1,565
Assessed Value - Land	\$1,565	\$1,565	\$1,565
Market Value - Total	\$10,430	\$10,430	\$10,430
Market Value - Land	\$10,430	\$10,430	\$10,430
YOY Assessed Change (\$)	\$0	\$0	
YOY Assessed Change (%)	0%	0%	
Tax Year	Total Tax	Change (\$)	Change (%)
2018	\$230		
2019	\$230	\$0	0%
2020	\$228	-\$2	-0.87%

CHARACTERISTICS			
Land Use - CoreLogic	Vacant Land (NEC)	Lot Area	77,537
Land Use - State	Vacant Land Suitable For Devel	Lot Acres	1.78



*Lot Dimensions are Estimated