



**ONE FORT KING – 24 UNIT URBAN TOWNHOME PROJECT**  
**3D VISUALIZATION OVERVIEW**

110 SW FORT KING STREET – DOWNTOWN OCALA FLORIDA  
PRESENTED BY RAY DESIGN DEVELOPMENT



View from 1<sup>st</sup> Avenue & E. Fort King Street

One Fort King shall be Downtown Ocala's Premier Urban Rowhome Development. Brick, Stucco and Wood accent the Building Exterior with Modern finishes and fixtures adorning the Interior. Each Unit contains its own garage along with a Ground Level Office or Flex Space ideal for a Live-Work lifestyle. Units contain 2 Bedrooms and 2.5 Bathrooms with an Open Floor Plan and many units including a small exterior balcony standard.

Residents can walk to their favorite restaurants, bars, shops and venues.  
Developer will offer several interior finish packages.



**ONE FORT KING – 24 UNIT URBAN TOWNHOME PROJECT**  
110 SW FORT KING STREET – DOWNTOWN OCALA FLORIDA  
RAY DESIGN DEVELOPMENT



View from 1<sup>st</sup> & Ft. King



Building Elevation – 1<sup>st</sup> Ave



**ONE FORT KING – 24 UNIT URBAN TOWNHOME PROJECT**  
110 SW FORT KING STREET – DOWNTOWN OCALA FLORIDA  
RAY DESIGN DEVELOPMENT



Aerial



Pedestrian Level View





**ONE FORT KING – 24 UNIT URBAN TOWNHOME PROJECT**  
110 SW FORT KING STREET – DOWNTOWN OCALA FLORIDA  
RAY DESIGN DEVELOPMENT



Building Elevation – Fort King Street



Pedestrian Level Detail View



**ONE FORT KING – 24 UNIT URBAN TOWNHOME PROJECT**  
110 SW FORT KING STREET – DOWNTOWN OCALA FLORIDA  
RAY DESIGN DEVELOPMENT



Garage Entry from Ft. King



Vehicular Drive Lane



**ONE FORT KING – 24 UNIT URBAN TOWNHOME PROJECT**  
110 SW FORT KING STREET – DOWNTOWN OCALA FLORIDA



Level 1 – Stair / Office



Level 2 – Living / Dining / Kitchen

Sample Interior Images – Photos from a Different Project – Subject to Change





**ONE FORT KING – 24 UNIT URBAN TOWNHOME PROJECT**  
110 SW FORT KING STREET – DOWNTOWN OCALA FLORIDA



Level 2 – Living / Dining / Kitchen



Level 3 – Laundry / Bedroom (Door Not Shown for Information Purposes)

Sample Interior Images – Photos from a Different Project – Subject to Change





**ONE FORT KING – 24 UNIT URBAN TOWNHOME PROJECT**  
110 SW FORT KING STREET – DOWNTOWN OCALA FLORIDA



Level 3 – Guest Bedroom



Level 3 – Guest Bathroom

Sample Interior Images – Photos from a Different Project – Subject to Change



**ONE FORT KING – 24 UNIT URBAN TOWNHOME PROJECT**  
110 SW FORT KING STREET – DOWNTOWN OCALA FLORIDA



Level 3 – Master Bedroom

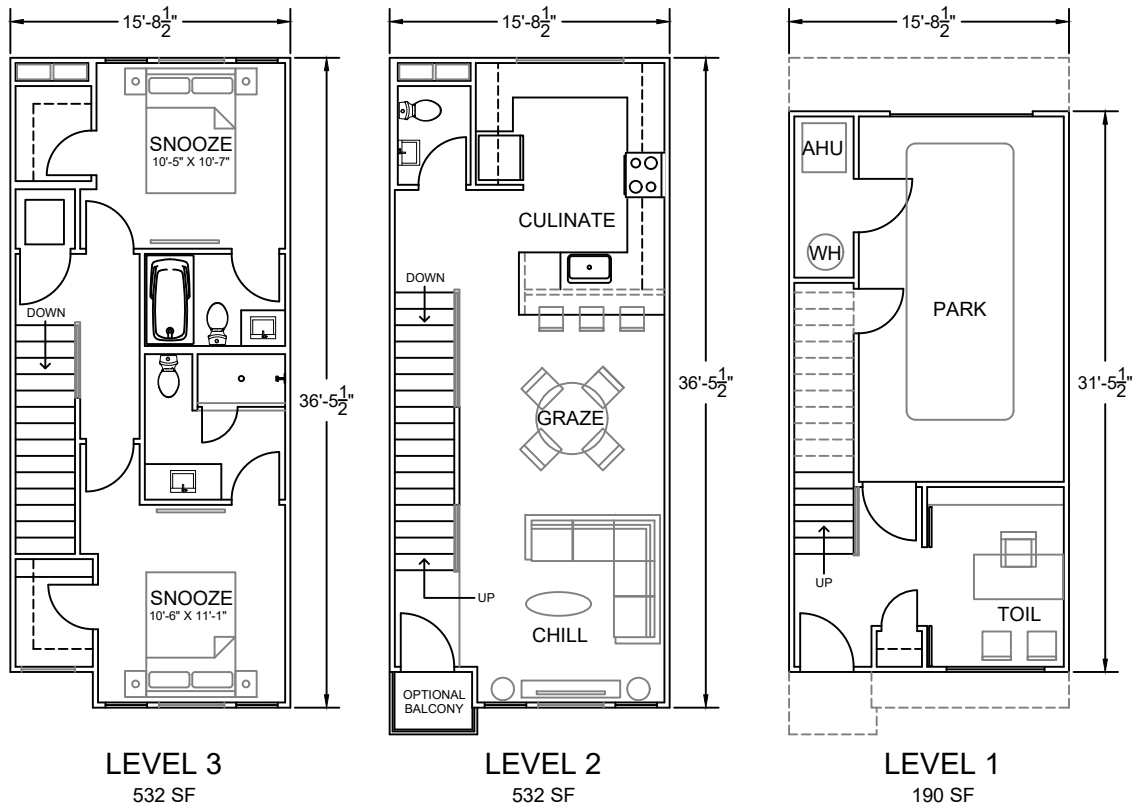


Level 3 – Master Bathroom

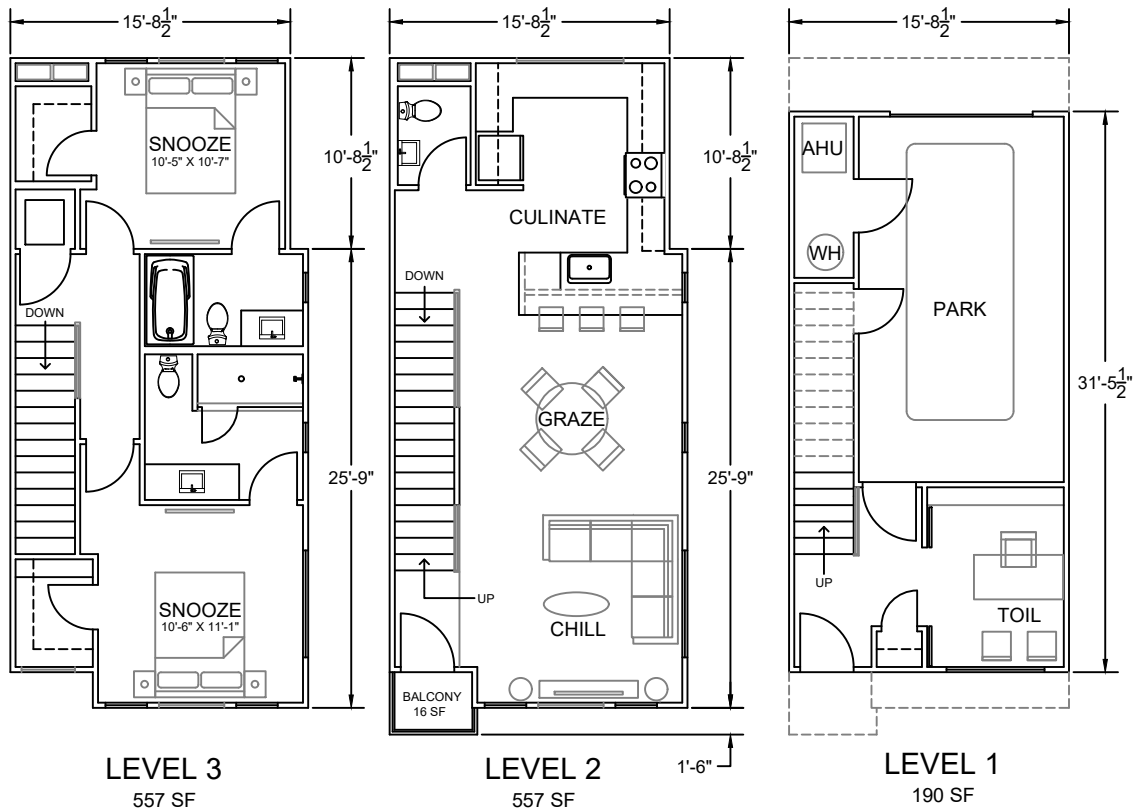
Sample Interior Images – Photos from a Different Project – Subject to Change

# ONE FORT KING - TOWNHOME UNIT PLAN

RAY DESIGN DEVELOPMENT  
COPYRIGHT PROTECTED



TYPICAL UNIT - 2 BED - 2.5 BATH - 1,254 SF (10 QTY)



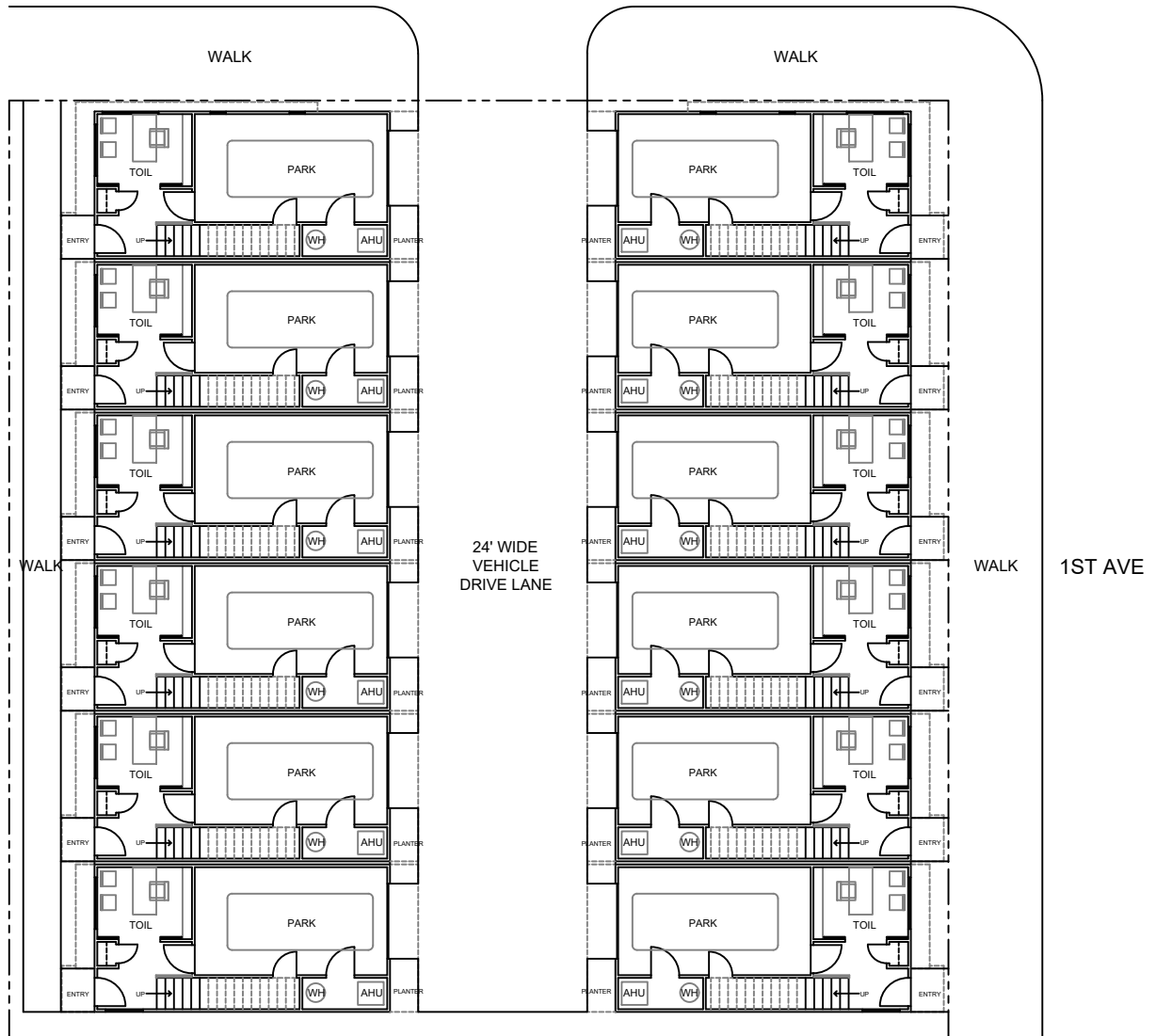
FORT KING END UNIT - 2 BED - 2.5 BATH - 1,304 SF (2 QTY)

# ONE FORT KING - 24 UNIT TOWNHOME PROJECT

RAY DESIGN DEVELOPMENT

COPYRIGHT PROTECTED

FORT KING



## LEVEL 1

TYPICAL UNIT - 2 BED - 2.5 BATH - 1,254 SF (10 QTY)  
FORT KING END UNIT - 2 BED - 2.5 BATH - 1,304 SF (2 QTY)

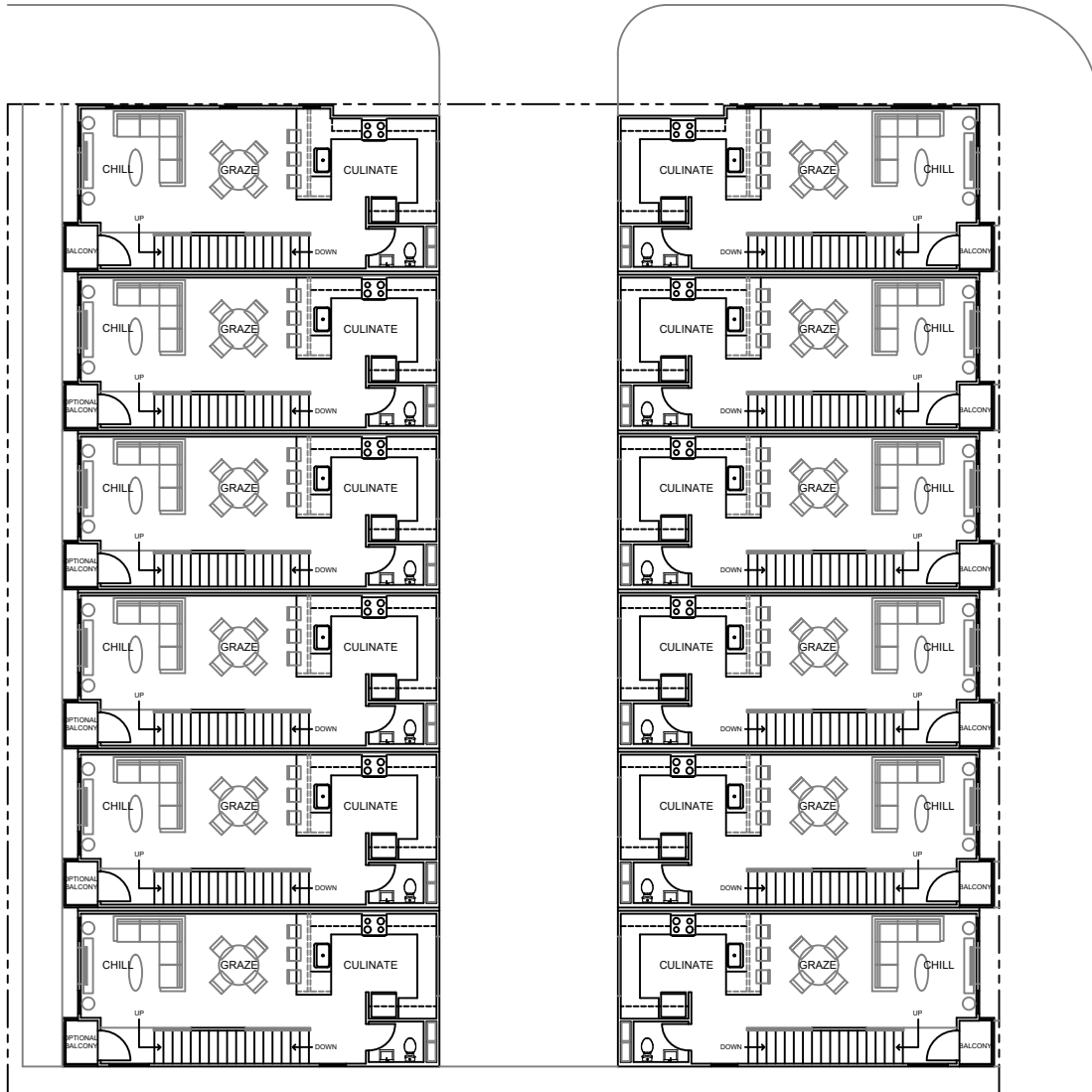


# ONE FORT KING - 24 UNIT TOWNHOME PROJECT

RAY DESIGN DEVELOPMENT

COPYRIGHT PROTECTED

FORT KING

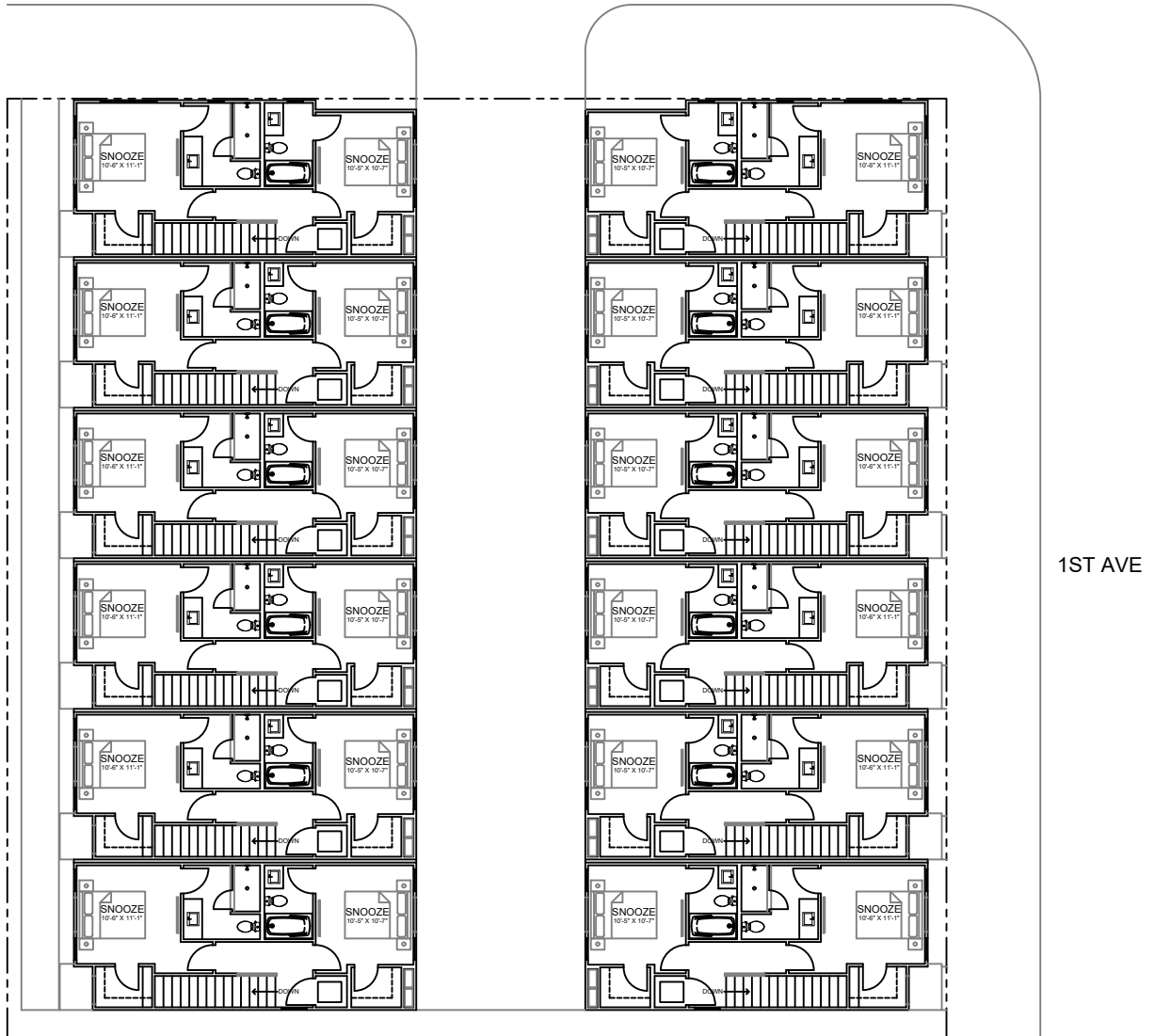


## LEVEL 2

TYPICAL UNIT - 2 BED - 2.5 BATH - 1,254 SF (10 QTY)  
FORT KING END UNIT - 2 BED - 2.5 BATH - 1,304 SF (2 QTY)

ONE FORT KING - 24 UNIT TOWNHOME PROJECT  
RAY DESIGN DEVELOPMENT  
COPYRIGHT PROTECTED

FORT KING



LEVEL 3

TYPICAL UNIT - 2 BED - 2.5 BATH - 1,254 SF (10 QTY)  
FORT KING END UNIT - 2 BED - 2.5 BATH - 1,304 SF (2 QTY)

**One Fort King – 24 Unit Urban Townhome Project**



**Downtown Ocala Aerial – Subject Property at Corner of E. Ft. King St & SW 1<sup>st</sup> Ave**

*(Supplemental Parking Available at 3 Nearby City Surface Lots)*



## Downtown Ocala Images



Downtown Square



Downtown Square



## Downtown Ocala Images



Downtown Streetscape



Downtown Streetscape



## Downtown Ocala Images



Downtown Hilton Garden – Opening Soon



Bank Street Patio Bar – Opened in 2019