

MARYLAND CORPORATE CENTER

7404 Executive Place, Lanham, MD 20706
Prince George's County

OFFICE SPACE FOR LEASE
AS SMALL AS 1,491 SF



AVAILABILITIES

- Suite 102: 1,945 RSF
- Suite 103: 1,491 RSF
- Suite 225B: 2,073 RSF
- Suite 250: 3,515 RSF
- Suite 300: 8,099 RSF

BUILDING FEATURES

- Lease Rate: \$18.95, Full Service
- 77,000 rentable square feet
- 4 stories
- 2.73 acres
- Zoned I-1
- 1 mile from NASA / Goddard Space Flight Center
- 3.5 parking spaces per 1,000 square feet
- Transportation to Greenbelt Metro & PG County bus service (TheBus)
- Easy access to Balto./Wash. Pkwy (MD Rt. 295) & Capital Beltway (I-495)
- On-site shared conference center

OWNED & MANAGED BY:



THE FALLSTAFF
GROUP, INC.

GOLDMAN PARTNERS
GROUP

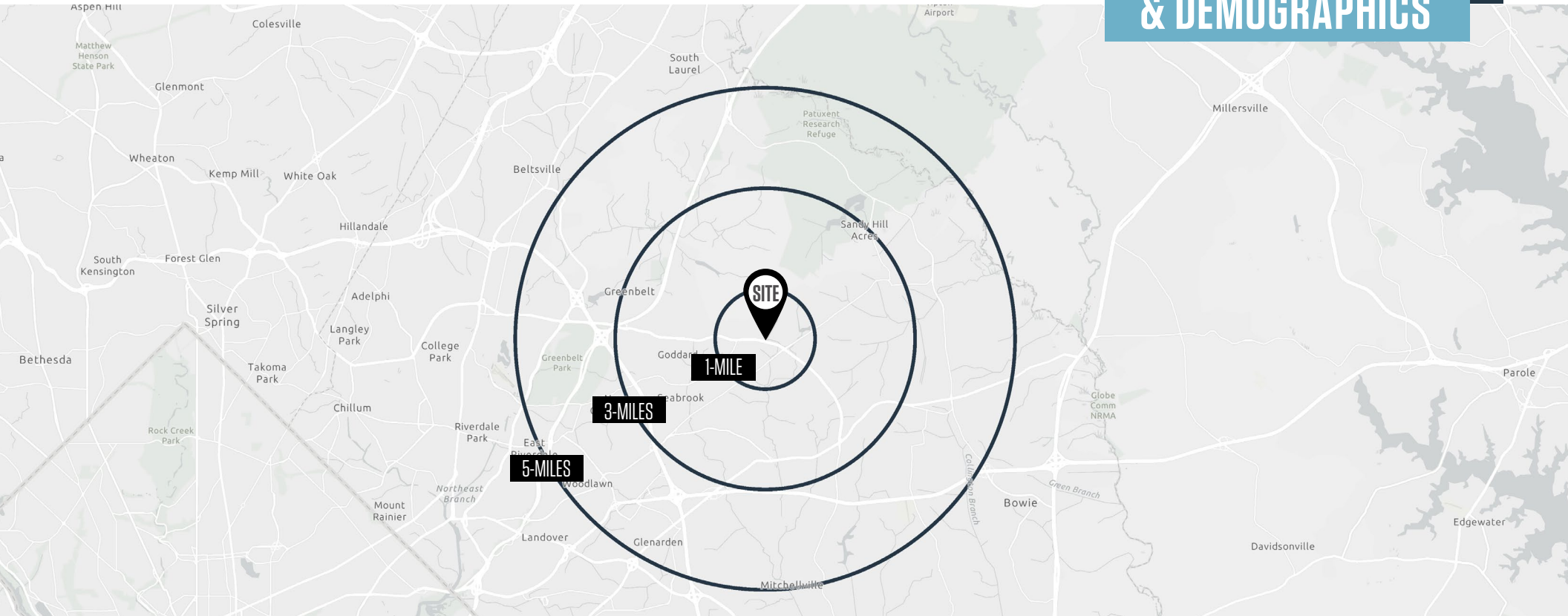
DIRECT: (410) 736 - 1026

Please call or text

MARYLAND CORPORATE CENTER


7404 Executive Place, Lanham, MD 20706
Prince George's County

LOCATION & DEMOGRAPHICS



TRAFFIC COUNTS | 2023

Greenbelt Road [MD-193]	26,562 ADT
Baltimore/Washington Pkwy [MD-295]	107,812 ADT
Lanham-Severn Road [MD 564]	17,774 ADT

	1-MILE	3-MILES	5-MILES		1-MILE	3-MILES	5-MILES
	Population 8,720	68,199	190,040		Households 2,965	22,898	62,504
	Daytime Population 4,306	32,213	90,397		Average Household Income \$126,102	\$131,997	\$136,275

MARYLAND CORPORATE CENTER

7404 Executive Place, Lanham, MD 20706
Prince George's County

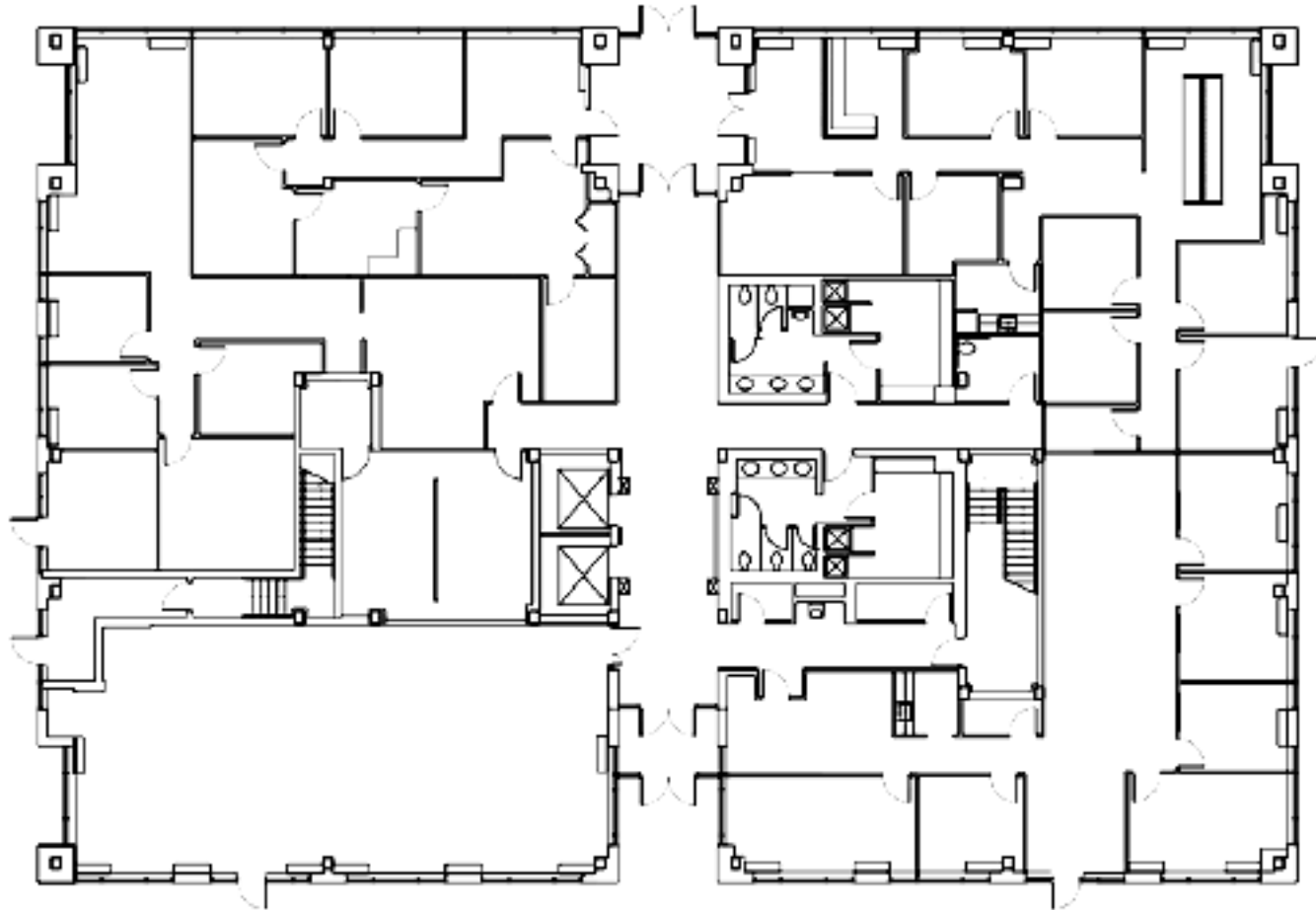
MARKET AERIAL



MARYLAND CORPORATE CENTER

7404 Executive Place, Lanham, MD 20706
Prince George's County

FIRST FLOOR PLAN



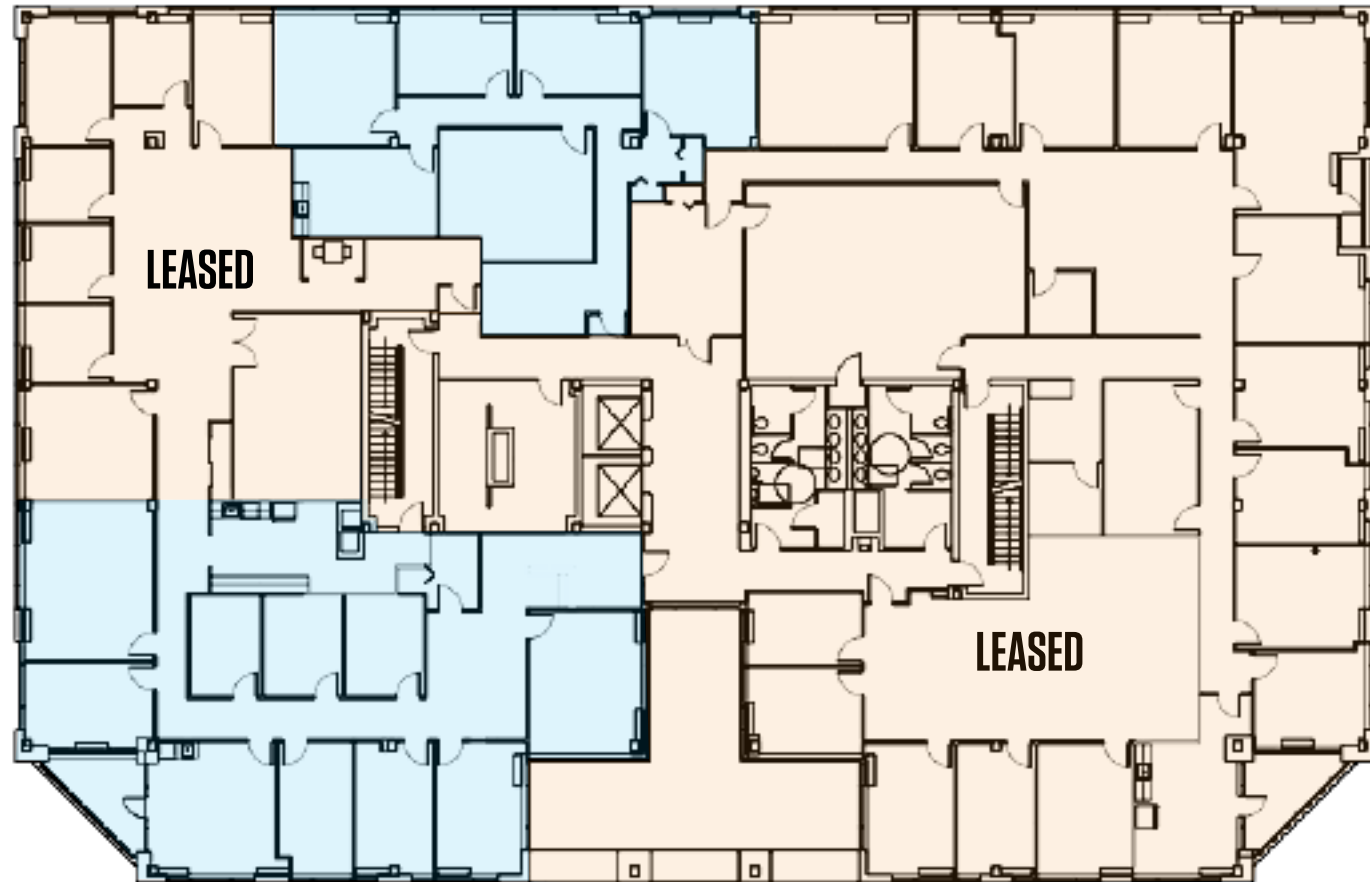
MARYLAND CORPORATE CENTER

7404 Executive Place, Lanham, MD 20706
Prince George's County

SECOND FLOOR PLAN

SUITE 225B
2,073 SF AVAILABLE

SUITE 250
3,515 SF AVAILABLE

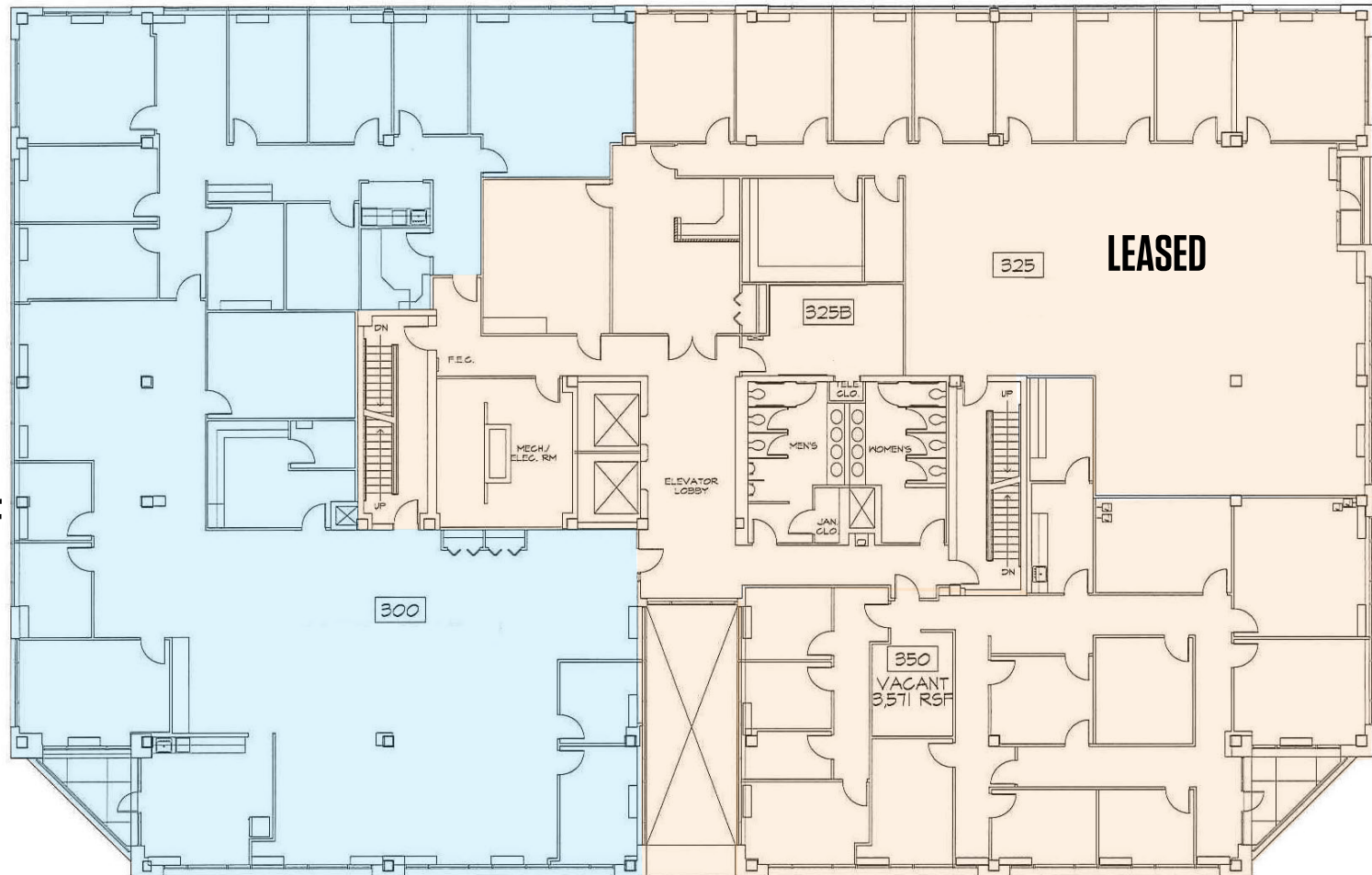


MARYLAND CORPORATE CENTER

7404 Executive Place, Lanham, MD 20706
Prince George's County

THIRD FLOOR PLAN

SUITE 300
2,500 SF - 8,099 SF
AVAILABLE



MARYLAND CORPORATE CENTER

7404 Executive Place, Lanham, MD 20706
Prince George's County

PHOTOS



MARYLAND CORPORATE CENTER

7404 Executive Place, Lanham, MD 20706

Prince George's County

For More Information, Please Contact:

DIRECT: (410) 736 - 1026

Please call or text

THE FALLSTAFF GROUP, INC.



GOLDMAN PARTNERS GROUP

