



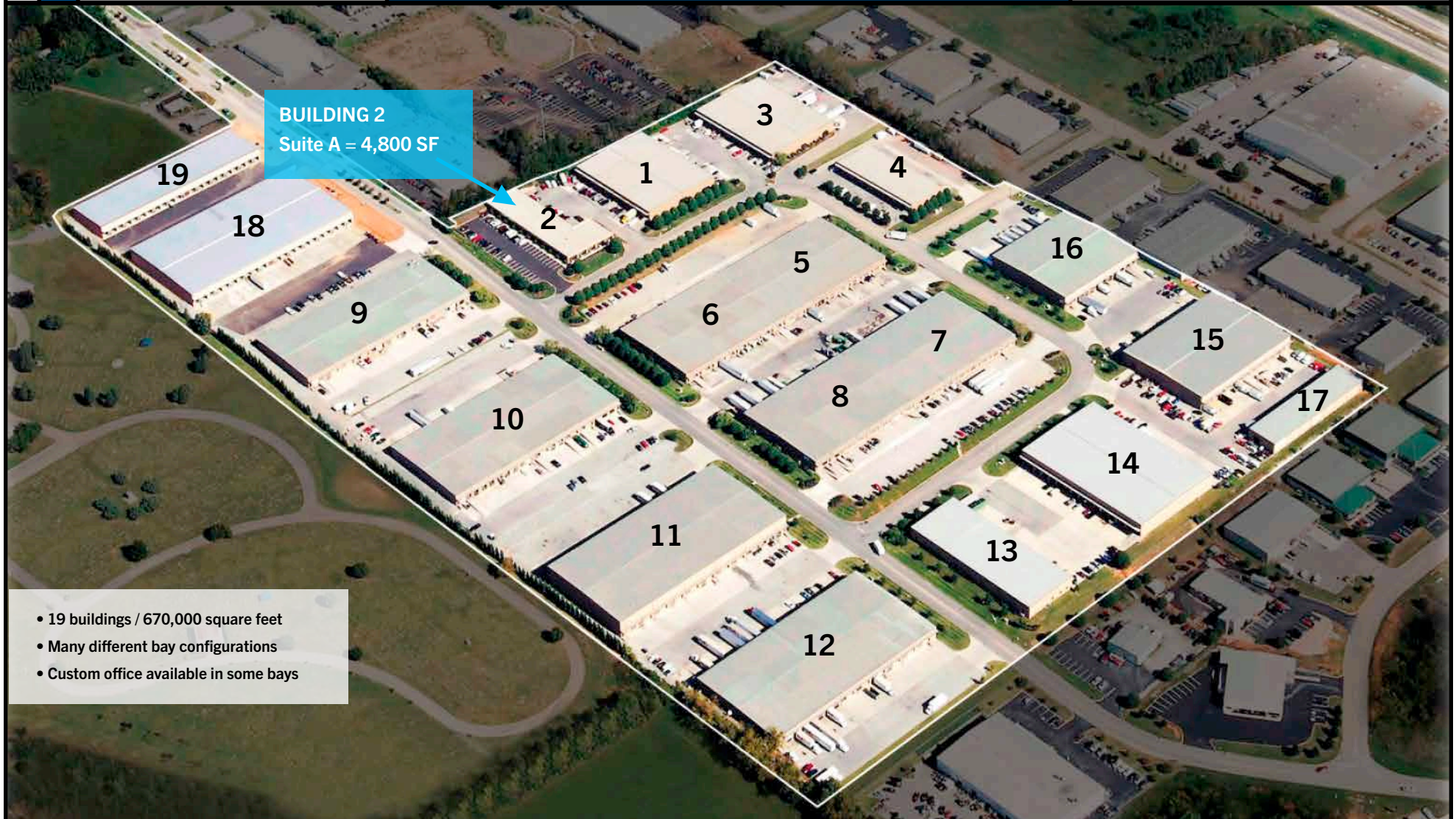
fiserinc.com

NORTH PARK
INDUSTRIAL COMPLEX



- 1,200 - 50,000 square feet bays
- Multi Dock and Drive-In
- Covered Dock Areas
- Double Loaded Bays

FOR MORE INFORMATION John Osborne josborne@fiserinc.com 865-693-0711 w 865-207-6479 m

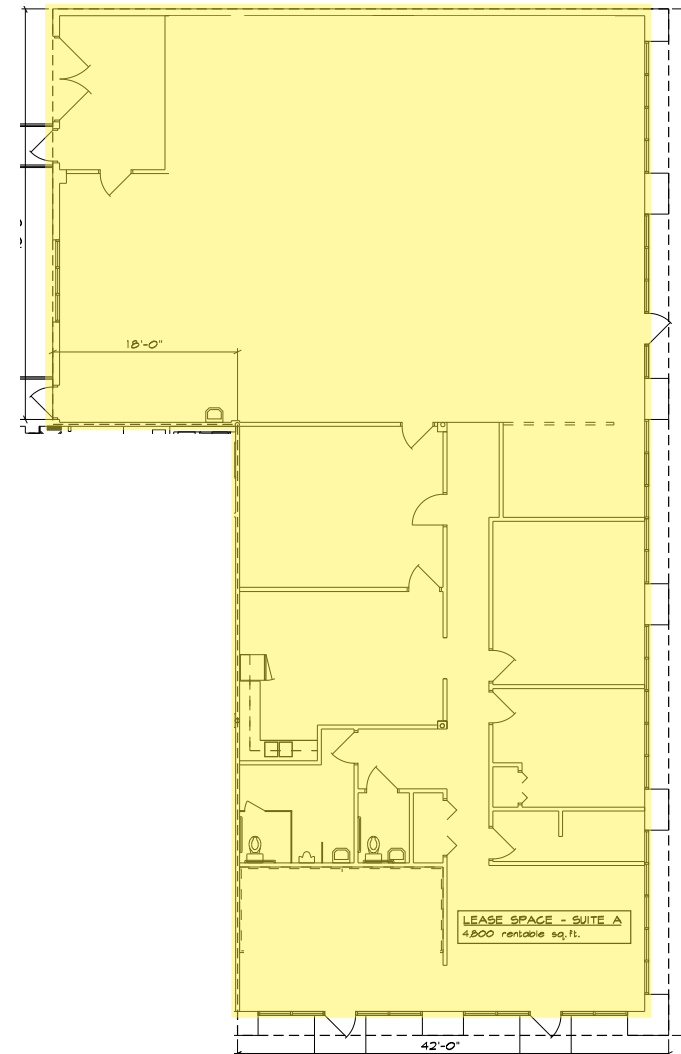


Fiser, inc.

fiserinc.com

NORTH PARK
INDUSTRIAL COMPLEX

Building 2
Suite A
4,800 SF



FOR MORE INFORMATION John Osborne josborne@fiserinc.com 865-693-0711 w 865-207-6479 m