

7025
N MAPLE AVE.
SUITE 120

7025 **PARTNERS**
PERSONNEL

For Lease
±4,064 SF

TONY CORTOPASSI
Managing Director
+1 559 433 3549
License# 01413706
tony.cortopassi@cushwake.com



**CUSHMAN &
WAKEFIELD**

// PROPERTY FEATURES

Building Size: ±12,064

Space Available: ±4,064

Lease Rate: \$1.80 psf, monthly

Lease Type: NNN

Office Space Use: General office or light medical

Space condition: Move in ready

8 Offices, Conference Room, Break Room,
Interior restrooms, & Space for cubes

Parking: 4.64/1,000

Year Built: 2007

GREAT NORTH FRESNO LOCATION

- North Fresno Medical Corridor
- Herndon Frontage & Visibility
- Building Signage Available
- Many Surrounding Amenities



// 7025 N. MAPLE AVENUE
Suite 120, Fresno, CA



// BUILDING INFORMATION

Great Class A single story medical / office building located in an ideal northeast Fresno location. This well-structured building offers the highest quality in building standards which allows it to accommodate large professional users as well as small practices.

The property offers easy access to Herndon Expressway/Freeway 41 and is in close proximity to a wide array of amenities including shopping, restaurants and financial institutions.

The site offers easy access to St. Agnes and Kaiser hospitals and is well suited for medical use.

BUILDING SIZE
12,064 SF

LOT SIZE
1.07 ACRES

PROPERTY TENANCY
MULTI-TENANT

BUILDING CLASS
A

PARKING RATIO
4.64 /1,000

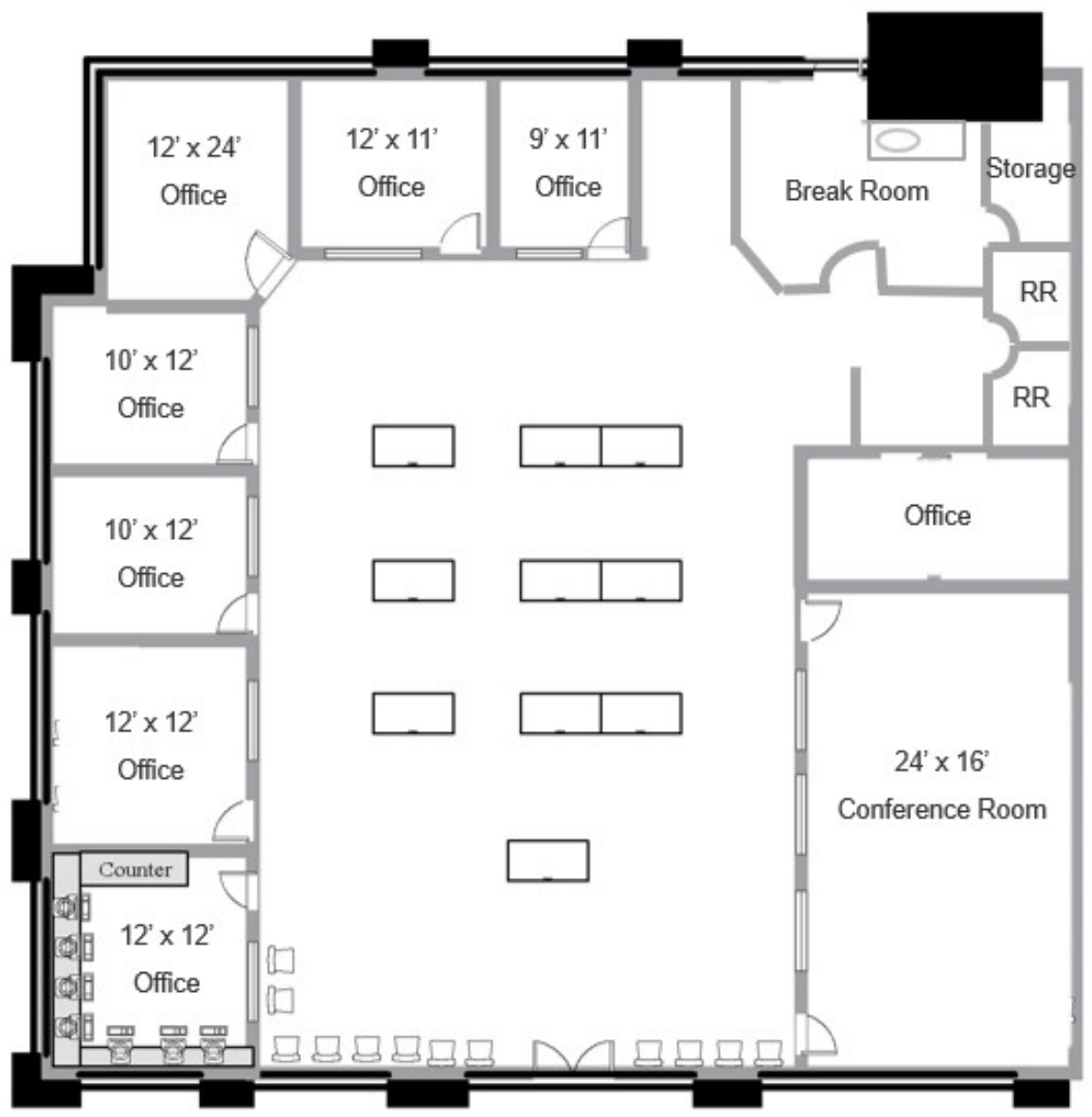
YEAR BUILT
2007

ZONING
CP
(Administrative & Professional)

// 7025 N. MAPLE AVENUE
Suite 120, Fresno, CA

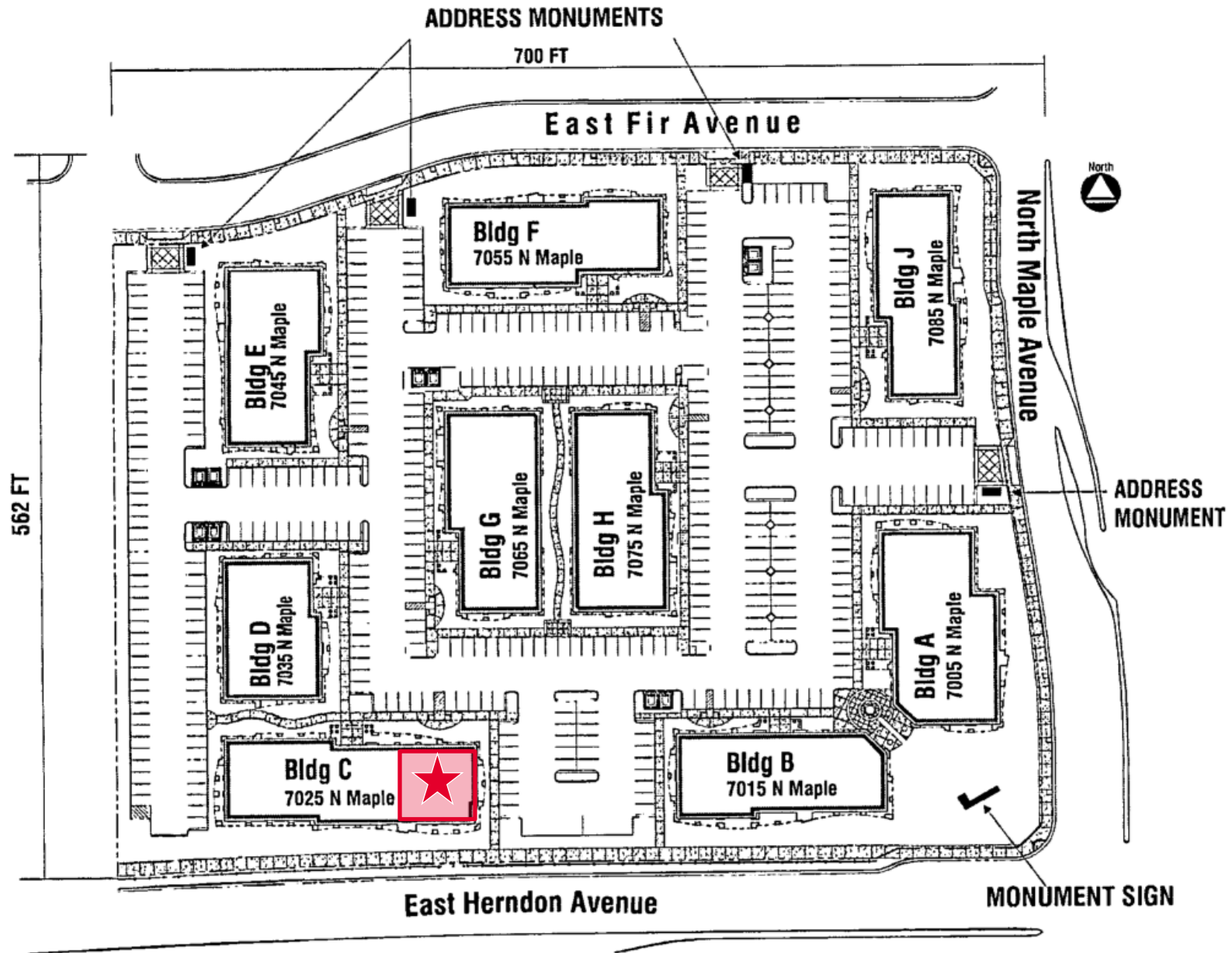
// FLOORPLAN

±4,027 SQUARE FEET AVAILABLE



// 7025 N. MAPLE AVENUE
Suite 120, Fresno, CA

// SITE PLAN



// 7025 N. MAPLE AVENUE
Suite 120, Fresno, CA



COMMUNITY AERIAL MAP

SUBJECT PROPERTY: 7025 N. MAPLE AVENUE

7025 N. MAPLE AVENUE
Suite 120, Fresno, CA

// GALLERY



TONY CORTOPASSI
+1 559 433 3549
tony.cortopassi@cushwake.com

// 7025 N. MAPLE AVENUE
Suite 120, Fresno, CA

// GALLERY



TONY CORTOPASSI
+1 559 433 3549
tony.cortopassi@cushwake.com

// 7025 N. MAPLE AVENUE
Suite 120, Fresno, CA