

FOR LEASE

19325 S DIXIE HWY
CUTLER BAY, FL

RETAIL SPACE ON HIGH-TRAFFIC S DIXIE HIGHWAY

19325 SOUTH DIXIE HIGHWAY
CUTLER BAY, FL 33157

2ND GENERATION RESTAURANT



**LEE &
ASSOCIATES**

COMMERCIAL REAL ESTATE SERVICES

7925 NW 12th Street, Suite 301, Miami, FL 33126 | 305.235.1500 | leesouthflorida.com



PRESENTED BY:

Bert Checa

Principal

M:786.473.9227

bcheca@lee-associates.com

Oscar Pedro Musibay

Vice President

M:786.348.9257

omusibay@lee-associates.com

PROPERTY SUMMARY

2ND GENERATION RESTAURANT SPACE

Lee & Associates presents an outstanding retail space available for lease in the bustling Cutler Bay commercial district. This location offers 2,200 SF of prime space with over 200 linear feet of frontage along S Dixie Highway (US 1), providing excellent visibility and access. With a daily traffic count of approximately 55,000 vehicles. Planned facade renovations in 2025 will enhance the exterior appeal, while the property's pylon signage and ample parking, including 102 surface spaces and 3 marked handicapped spots, ensure ease of access for customers.

Located in a thriving retail corridor, this restaurant space benefits from high visibility and proximity to an upcoming Costco development just north of the site, which is expected to draw even more foot and vehicle traffic to the area. The property is easily accessible from major highways, including the Florida Turnpike, and offers convenient ingress and egress along S Dixie Highway, making it a prime location for a restaurant looking to attract a diverse customer base.



For more information, please contact one of the following individuals:

MARKET ADVISORS

BERT CHECA

Principal
786.473.9227
bcheca@lee-associates.com

OSCAR PEDRO MUSIBAY

Vice President
786.348.9257
omusibay@lee-associates.com

PROPERTY HIGHLIGHTS



High-Traffic Retail Storefront:

- 2,200 SF
- Over 200 linear feet of frontage along S Dixie Highway
- Facade renovations planned for 2025
- Prominent pylon signage for excellent visibility
- 102 parking spaces including 3 marked handicapped spots
- Located near the soon-to-open Costco development
- Convenient ingress/egress along a major commercial corridor



Prime Location:

73 surface parking spaces
Approximately 55,000 vehicles per day for high exposure



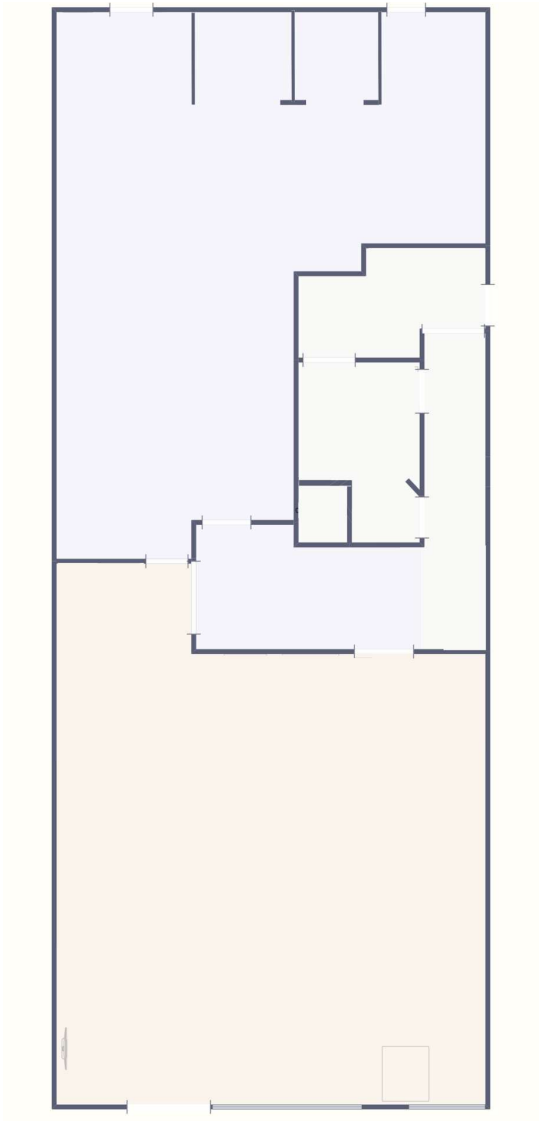
Exceptional Freeway Access:

US-1
Florida Turnpike

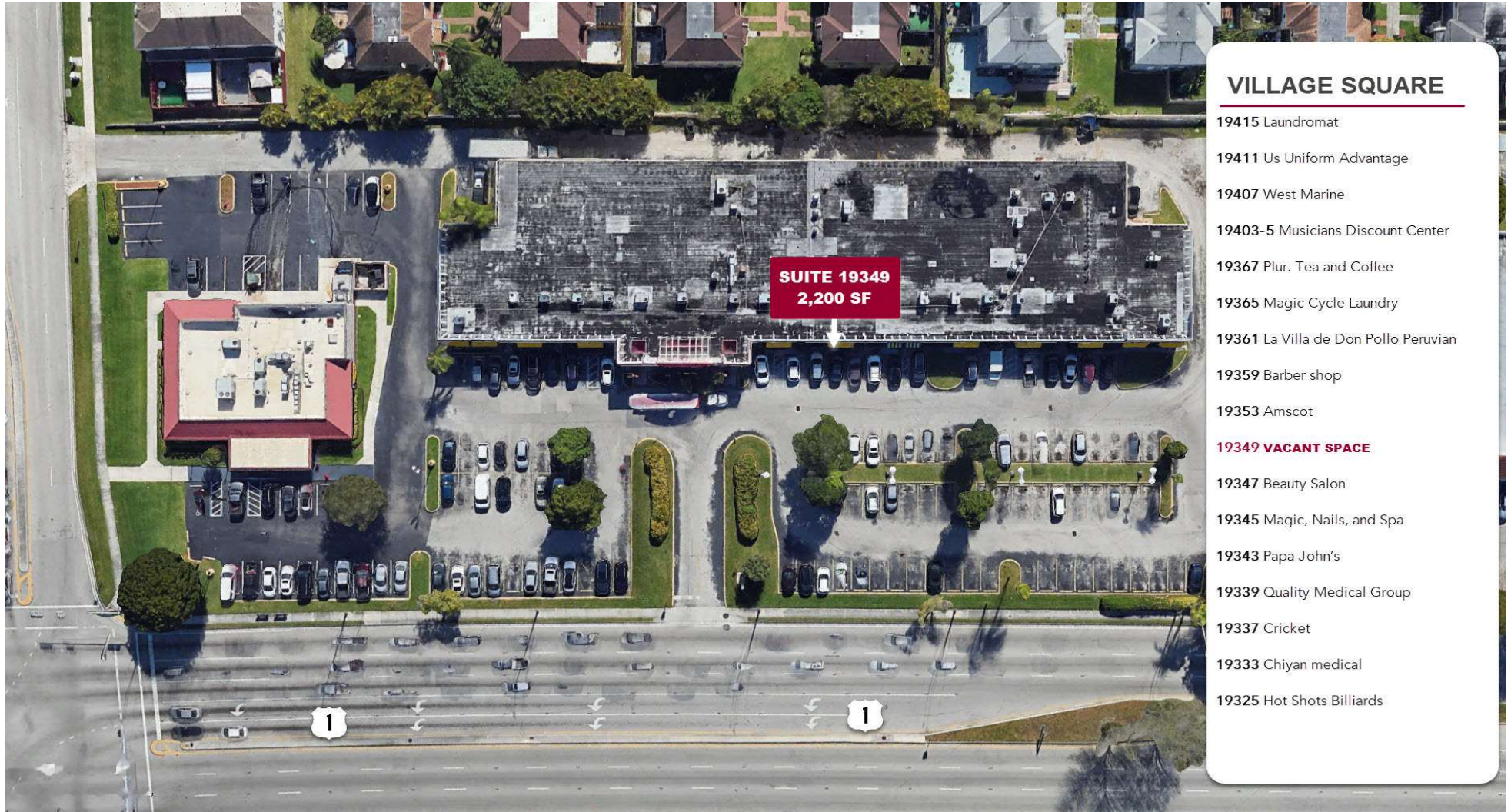
LEASING INFORMATION

AVAILABLE SPACES

SUITE	TENANT	SIZE (SF)	LEASE TYPE	LEASE RATE	DESCRIPTION
Suite 19349	Available	2,200 SF	NNN	\$29.00 SF/yr	CAM \$14.25



VILLAGE SQUARE



VILLAGE SQUARE

- 19415 Laundromat
- 19411 Us Uniform Advantage
- 19407 West Marine
- 19403-5 Musicians Discount Center
- 19367 Plur. Tea and Coffee
- 19365 Magic Cycle Laundry
- 19361 La Villa de Don Pollo Peruvian
- 19359 Barber shop
- 19353 Amscot
- 19349 VACANT SPACE**
- 19347 Beauty Salon
- 19345 Magic, Nails, and Spa
- 19343 Papa John's
- 19339 Quality Medical Group
- 19337 Cricket
- 19333 Chiyan medical
- 19325 Hot Shots Billiards

ADDITIONAL PHOTOS



REGIONAL MAP



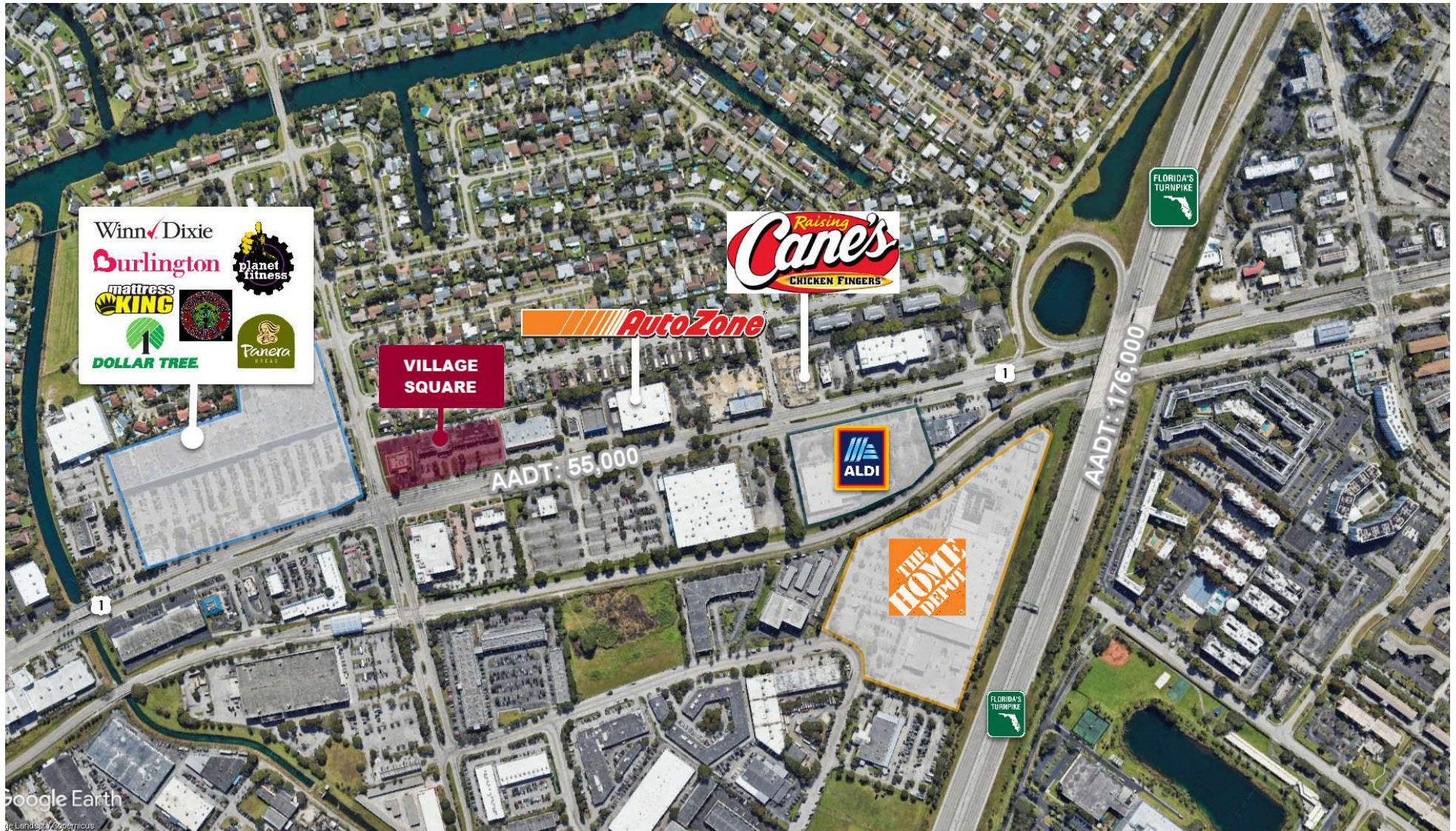
LOCATION OVERVIEW

Situated in the dynamic Cutler Bay area along S Dixie Highway, the property enjoys high exposure with approximately 55,000 vehicles passing by daily. Its proximity to major highways and a growing retail landscape, including a new Costco nearby, enhances its visibility and accessibility.

CITY INFORMATION

CITY:	Cutler Bay
MARKET:	South Florida
TRAFFIC COUNT:	55,000
SUBMARKET:	South Dade
CROSS STREETS:	SW 19500 Blk NW

AREA OVERVIEW



DEMOGRAPHIC PROFILE

KEY FACTS



135,909
Total Population



\$97,112
Average Household Income

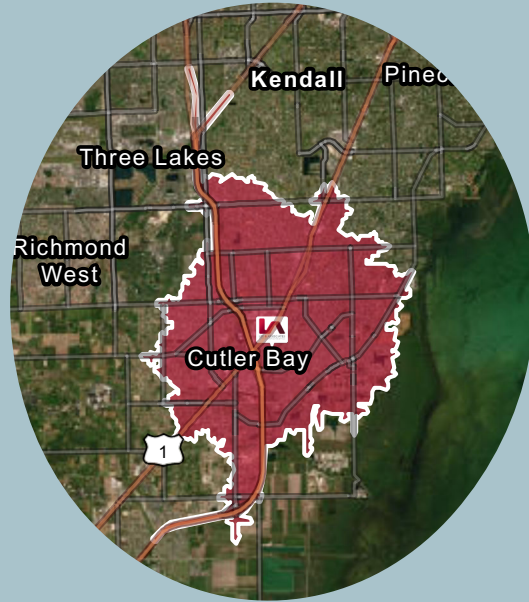


41.3
Median Age



3.0
Average Household Size

Drive time of 10 minutes



Average
Consumer Spending



\$2,089
Apparel



\$3,367
Dining Out

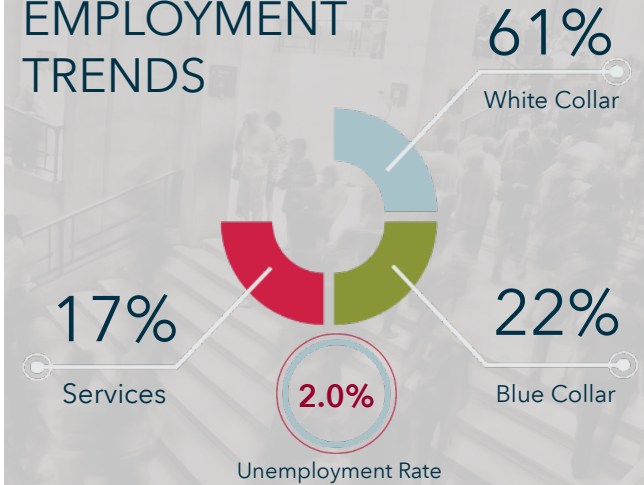


\$6,348
Groceries



\$6,104
Health Care

EMPLOYMENT TRENDS



BUSINESS



4,803
Total Businesses



31,622
Total Employees



4,819,465,556
Total Sales

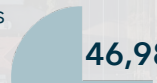
HOUSING UNITS



46,594
2020 Total Housing Units



48,321
2028 Total Housing Units



46,983
2023 Total Housing Units

DAYTIME POPULATION



103,213
Total Daytime Population



35,727
Daytime Population: Workers



67,486
Daytime Population: Residents

DEMOGRAPHIC PROFILE

KEY FACTS



327,313
Total Population



\$112,113
Average Household Income

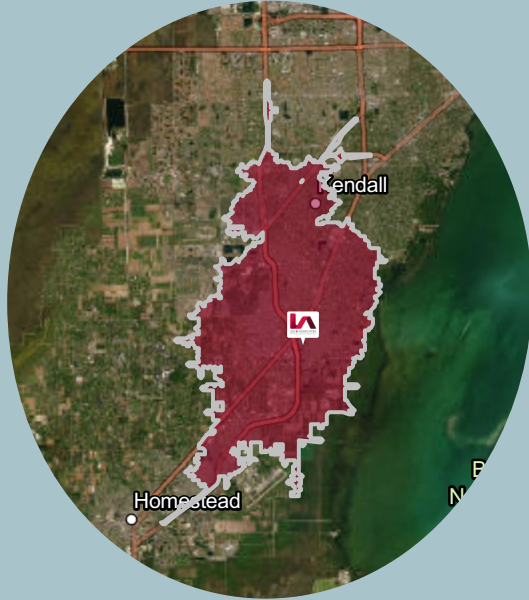


40.5
Median Age



3.0
Average Household Size

Drive time of 15 minutes



Average Consumer Spending



\$2,389
Apparel



\$3,856
Dining Out

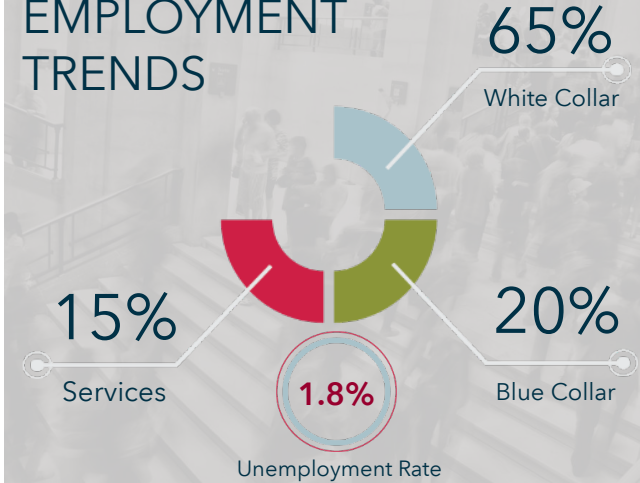


\$7,257
Groceries



\$7,029
Health Care

EMPLOYMENT TRENDS



BUSINESS



12,314
Total Businesses

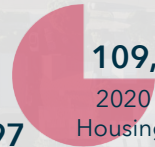


87,916
Total Employees

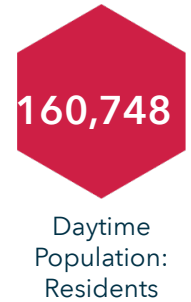
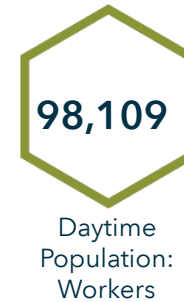


13,206,642,497
Total Sales

HOUSING UNITS



DAYTIME POPULATION



DEMOGRAPHIC PROFILE

KEY FACTS



640,798
Total Population



\$115,161
Average Household Income

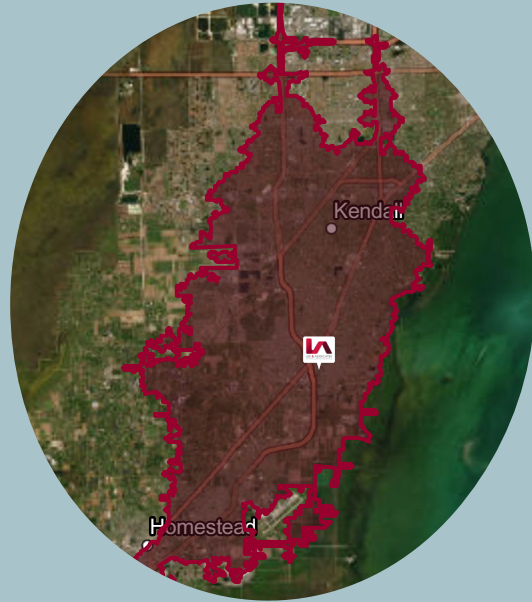


41.0
Median Age



2.9
Average Household Size

Drive time of 20 minutes



Average
Consumer Spending



\$2,452
Apparel



\$3,961
Dining Out

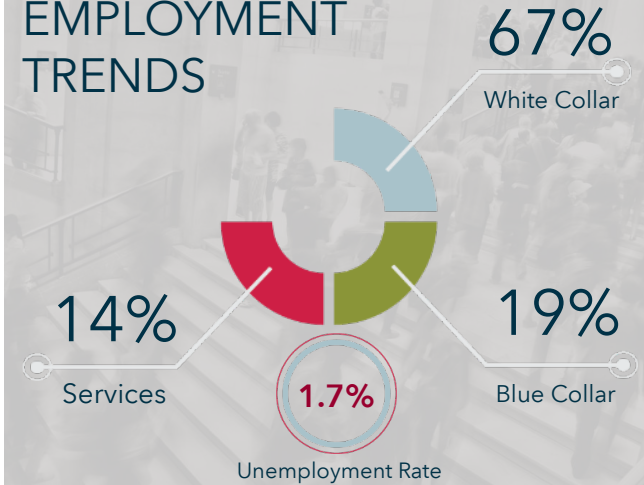


\$7,446
Groceries



\$7,189
Health Care

EMPLOYMENT TRENDS



BUSINESS



32,116
Total
Businesses



242,462
Total
Employees



37,239,270,795
Total Sales

HOUSING UNITS



DAYTIME POPULATION

