



Cypress Business Center

8301 Cypress Plaza Drive
Jacksonville, Florida 32256

Property Highlights

- One and two-story office & flex spaces with adaptable floor plans
- Philips Hwy frontage provides strong visibility with monument and directional signage at the main entrance
- Generous parking ratio of 5.5 spaces per 1,000 SF with multiple points of ingress and egress for convenient access
- Clear heights ranging from 16 to 18 feet and grade-level overhead doors available for select units
- Separately metered electric, eliminating after-hours HVAC charges

Property Overview

Cypress Business Center sits in central Jacksonville's desirable Butler/Baymeadows submarket with direct access to US 1 and close proximity to I 95, JTB, and I 295. It is just half a mile from Butler Point's 16 dining options and 2.5 miles from the Philips Hwy/Baymeadows Rd intersection with abundant amenities. The center is also a quick 10 minute drive to St Johns Town Center.

Offering Summary

Lease Rate:	\$14.00 SF/yr (NNN)
Building Size:	120,682 SF
Available SF:	1,716 - 9,090 SF
Lot Size:	14.67 Acres
Zoning:	PUD
Parking:	5.5 Space per 1,000 SF

For More Information



Patrick Carney

Vice President, Office Specialist
O: 904 404 4456 | C: 904 588 2508
pc@naihallmark.com



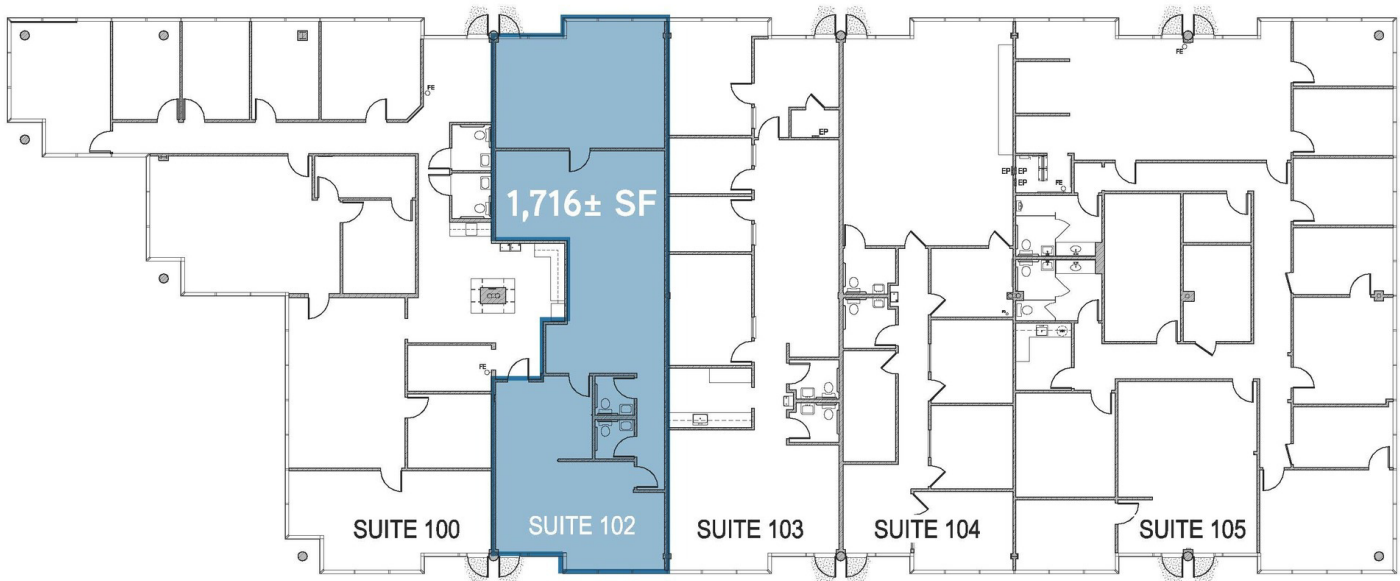
Sydney Miles

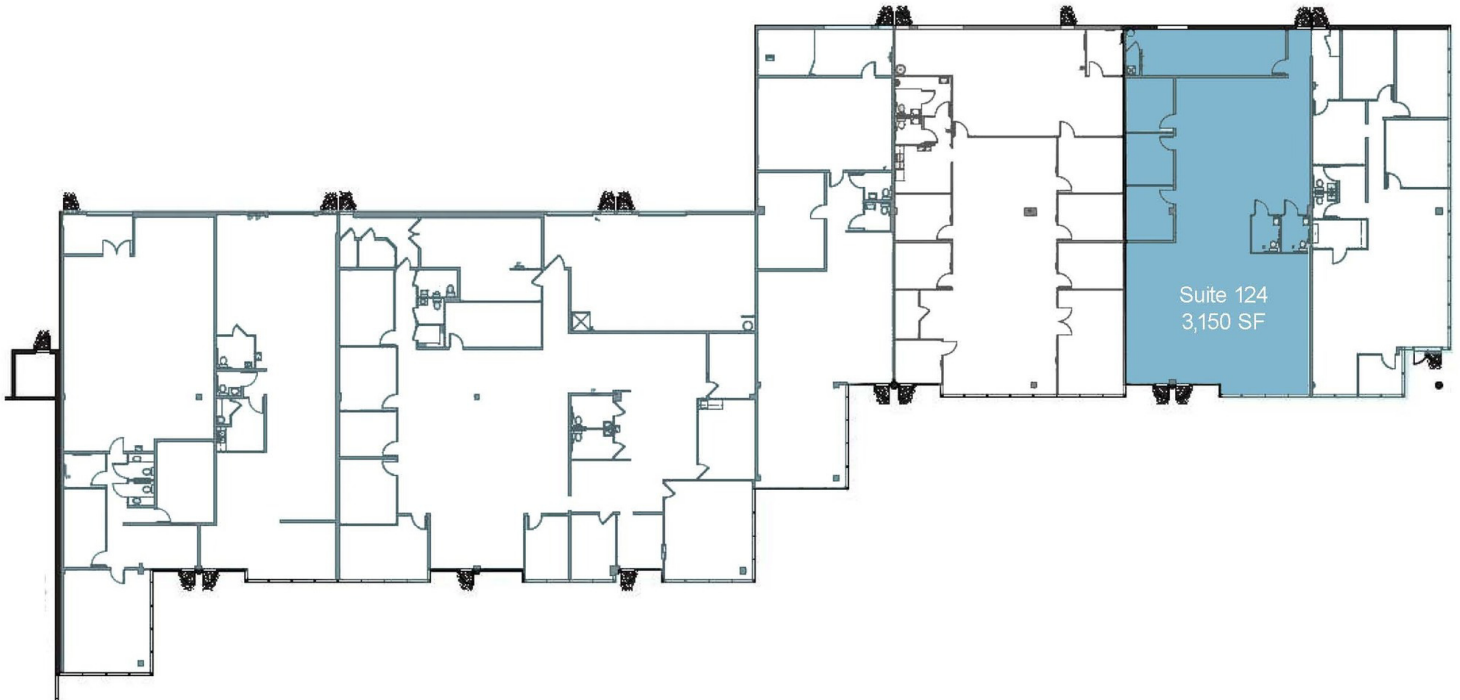
Associate
O: 904 404 5566 | C: 502 939 2900
sm@naihallmark.com

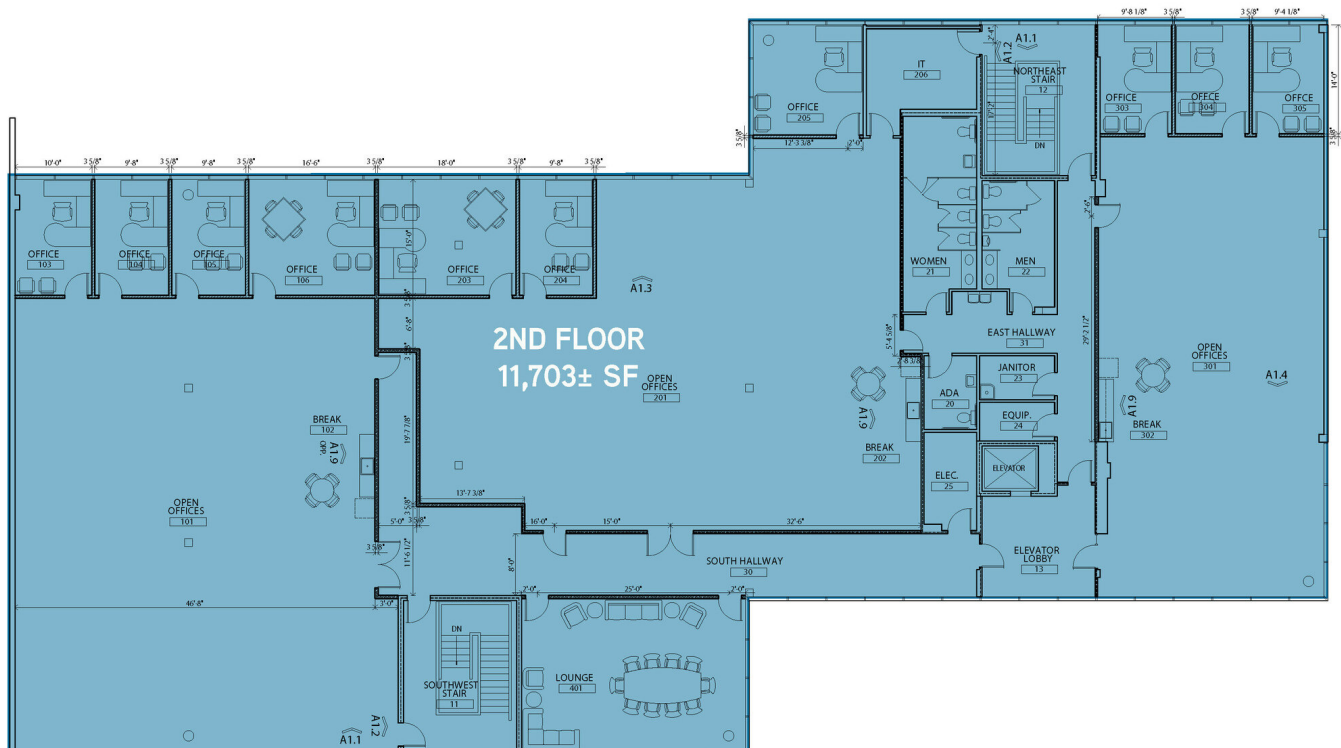
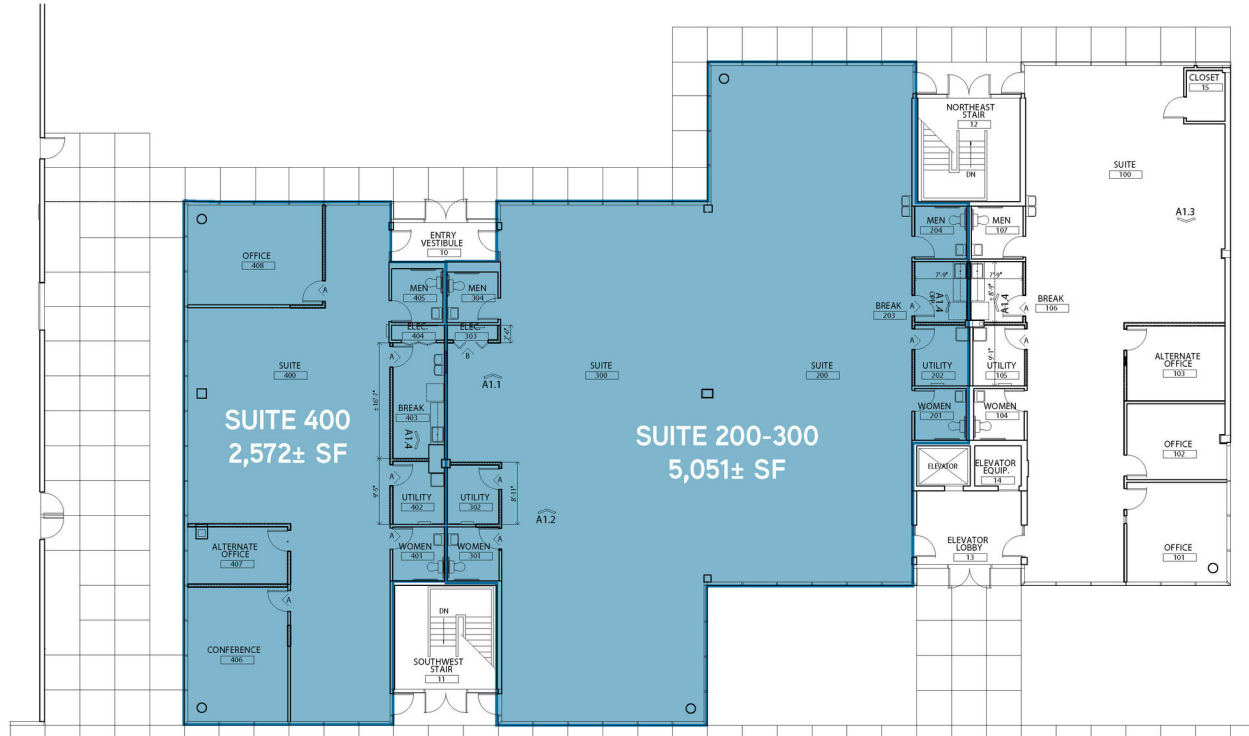


Available Spaces

Suite	Tenant	Size	Type	Rate
■ Bldg 1 - 102	Available	1,716 SF	NNN	\$14.00 SF/yr
■ Bldg 3 - 124	Available	3,150 SF	NNN	\$14.00 SF/yr
■ Bldg 4 - 200-300	Available	5,051 - 7,623 SF	NNN	\$14.00 SF/yr
■ Bldg 4 - 400	Available	2,572 - 7,623 SF	NNN	\$14.00 SF/yr
■ Bldg 4 - 2nd FL - Ste 210	Available	2,204 - 9,090 SF	NNN	\$14.00 SF/yr
■ Bldg 4 - 2nd FL - Ste 220	Available	3,321 - 9,090 SF	NNN	\$14.00 SF/yr
■ Bldg 4 - 2nd FL - Ste 230	Available	3,565 - 9,090 SF	NNN	\$14.00 SF/yr









For Lease

Bldg 4 - Suite 200-400
2,572 & 5,051 Sq Ft



