

5089 W. GRAND RIVER AVE.  
DETROIT, MICHIGAN

OFFICE FOR LEASE  
26,741 Square Feet Available

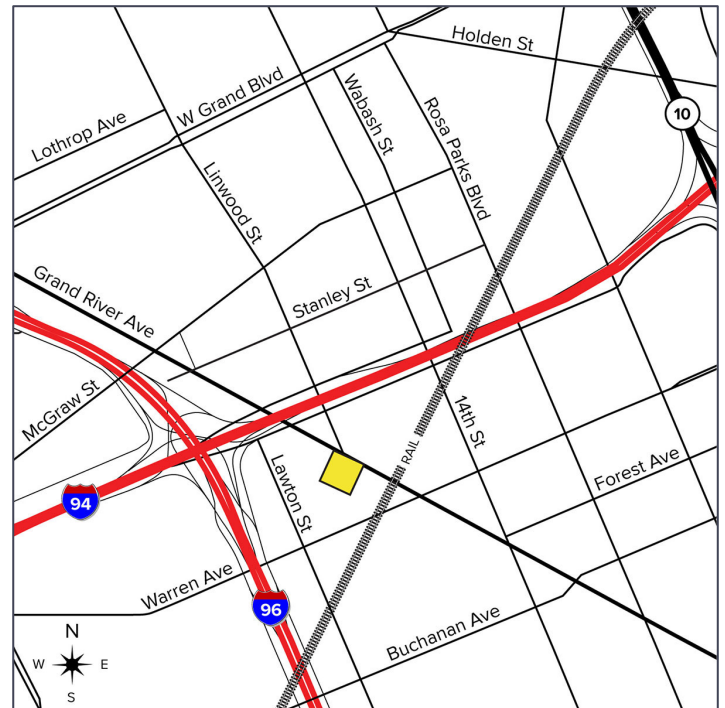


**SIGNATURE  
ASSOCIATES**  
KNOW SIGNATURE | KNOW RESULTS



## PROPERTY FEATURES

- 26,741 square feet available
- Gated lot
- Zoned M4
- Located on 2.97 acres
- Easy access to I-94 and I-96
- 1-5 year term available
- Lease Rate: \$6.00/sq. ft. NNN



For more information, please contact:

**CHRIS MONSOUR**  
(248) 948 0107  
cmonsour@signatureassociates.com

**JOE STACK**  
(248) 359 0615  
jstack@signatureassociates.com

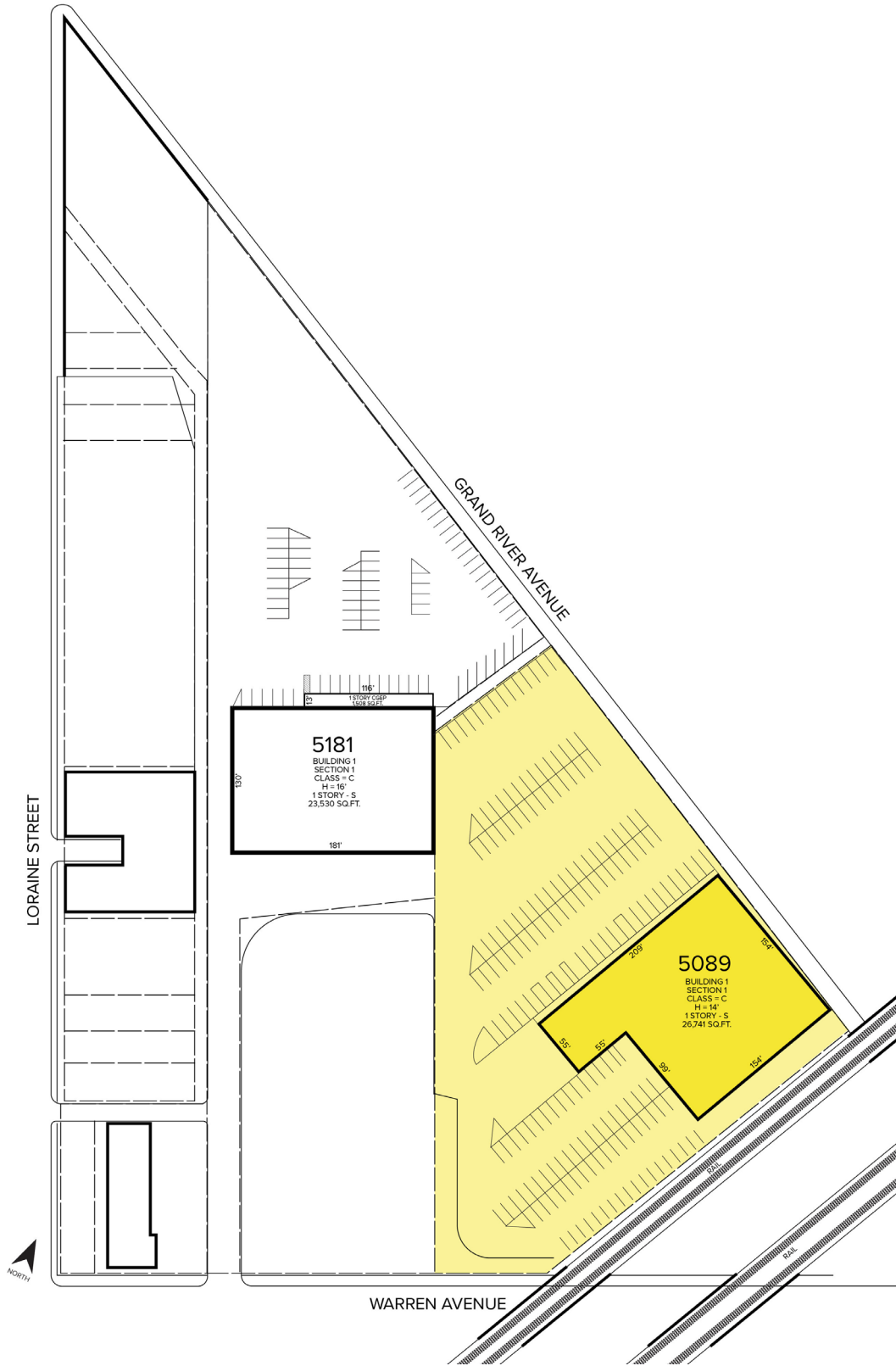
**SIGNATURE ASSOCIATES**  
One Towne Square, Suite 1200  
Southfield, MI 48076  
www.signatureassociates.com

# 5089 W. Grand River Avenue – Detroit, Michigan

Office For Lease

26,741  
Square Feet  
AVAILABLE

## Site Plan



For more information, please contact:

**CHRIS MONSOUR**  
(248) 948 0107  
cmonsour@signatureassociates.com

**JOE STACK**  
(248) 359 0615  
jstack@signatureassociates.com

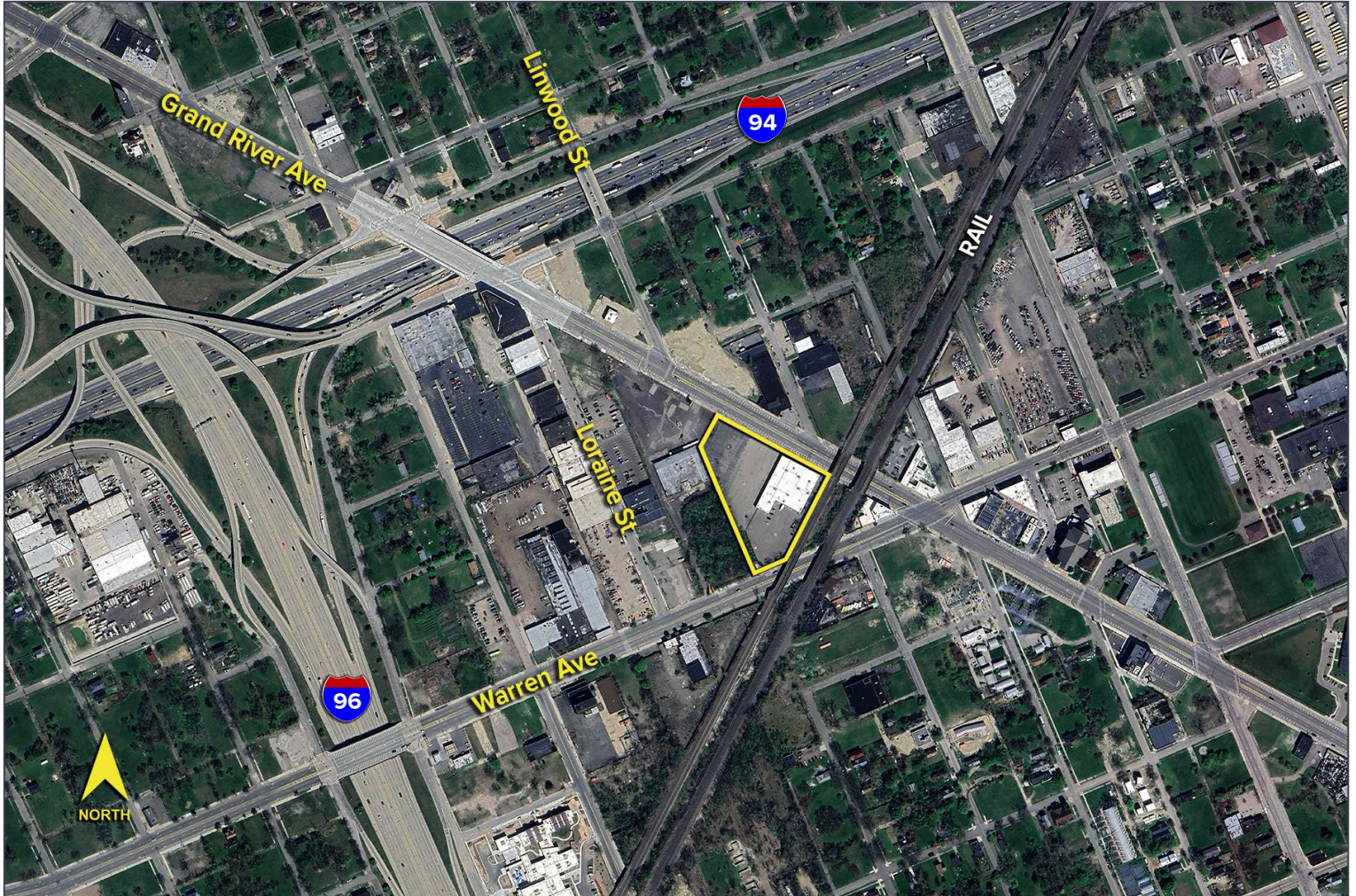
**SIGNATURE ASSOCIATES**  
One Towne Square, Suite 1200  
Southfield, MI 48076  
www.signatureassociates.com

# 5089 W. Grand River Avenue – Detroit, Michigan

Office For Lease

26,741  
Square Feet  
AVAILABLE

Aerial



For more information, please contact:

**CHRIS MONSOUR**  
(248) 948 0107  
cmonsour@signatureassociates.com

**JOE STACK**  
(248) 359 0615  
jstack@signatureassociates.com

**SIGNATURE ASSOCIATES**  
One Towne Square, Suite 1200  
Southfield, MI 48076  
www.signatureassociates.com