

HUNT

Corporate Services, Inc.

We Facilitate Your Business

8,961 Square Feet of Industrial/Flex Space For Lease

Just off the Long Island Expressway, Plainview, NY



55 West Ames Court, Plainview, New York

55 West Ames Court is a 90,025 square foot renovated "flex" building located immediately off the Long Island Expressway in Plainview, New York.



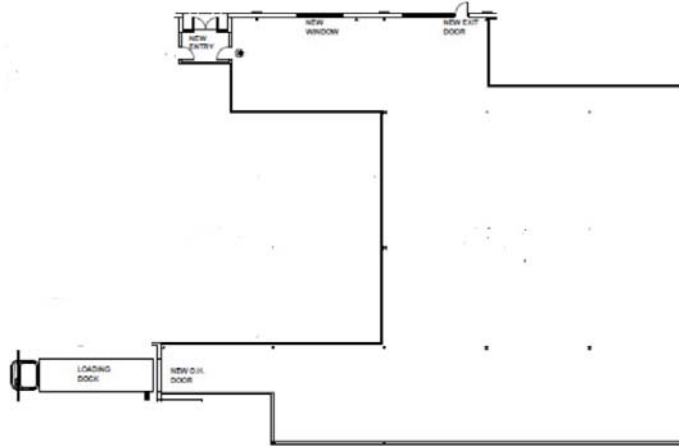
- > 8,961 square feet of industrial/flex space available
- > Suitable for R&D, pharma or back office
- > Full A/C, fully sprinklered, sewers, gas heating
- > Office and finished space built to suit
- > Separate entrance and utilities
- > Extensive parking
- > One block off the Long Island Expressway, Exit 46
- > One loading dock

HUNT

Corporate Services, Inc.

We Facilitate Your Business

55 West Ames Court, Plainview, New York



Description:

8,961 square feet of industrial/flex space available for lease in a 90,025 square foot building situated on 5.5 acres.

Location:

One block off the Long Island Expressway, at Exit 46.

Parking:

Abundant parking adjacent to the suite.

Occupancy:

Ready to finish to suit

Building:

Office space to suit

Heat: Gas

Sprinkler: Yes

Air-Conditioning: Yes

Sewers: Yes

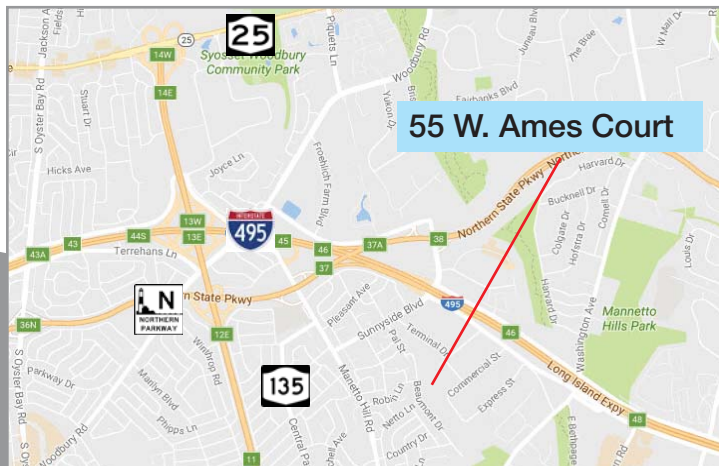
Loading: 1 loading dock

Rental:

\$15.95 per square foot net

Taxes:

\$5.16 per square foot



Exclusively Represented By:

David G. Hunt, MCR, CCIM

Licensed Real Estate Broker

HUNT CORPORATE SERVICES, INC.

185 Express Street, Suite 300

Plainview, NY 11803

Tel: (516) 937-1000 • www.huntcorp.com

dhunt@huntcorp.com

3/20/2026

Tel: (516) 937-1000 • Fax: (516) 931-1850 • email@huntcorp.com • Huntcorp.com

All information is from sources deemed reliable, and is submitted subject to errors, omissions, change of price, rental, prior to sale and withdrawal without notice.