

8131, 8115 & 8143

E Jefferson St | Detroit MI

Sale Price: Contact Broker | Lease Rate: \$17.00/SF MG + Electric

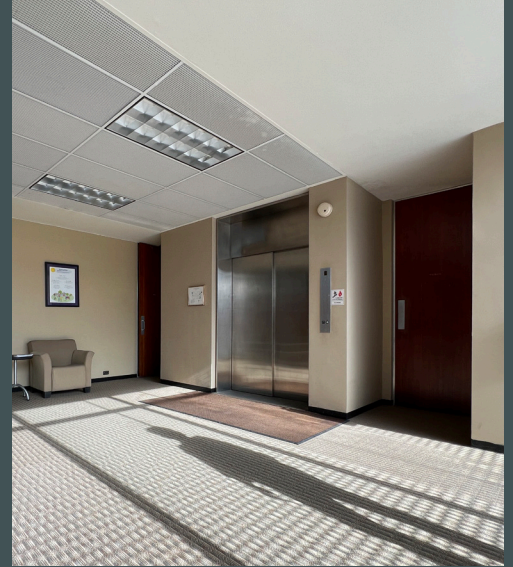


The Offering

The Offering consists of three office properties located on East Jefferson Avenue in Detroit, Michigan. The Properties are ideal for an owner user looking to own their office space in the City. Situated on 1.51 AC with flexible zoning, the site is also an attractive redevelopment opportunity for an investor.

| | |
|----------------|----------------------------------|
| Market | Detroit |
| Years Built | 1912 / 1950 / 1954 |
| # of Buildings | Three (3) |
| Property Size | 42,402 SF |
| Site Area | 1.51 AC |
| Parking | 80 Surface Spaces |
| Zoning | B-4, General Business District |
| Parcel IDs | 17000055 & 17000054 & 17000056-8 |

Interior Photos



Property Features:

- + Subject properties are located on E Jefferson Ave, major local thoroughfare along the Detroit River with daily traffic counts of over 21,000 vehicles per day
- + Current zoning allows for a wide array of potential uses at the subject sites
- + Proximate to St. John Riverview Hospital
- + Conveniently situated between Downtown Detroit and Grosse Pointe

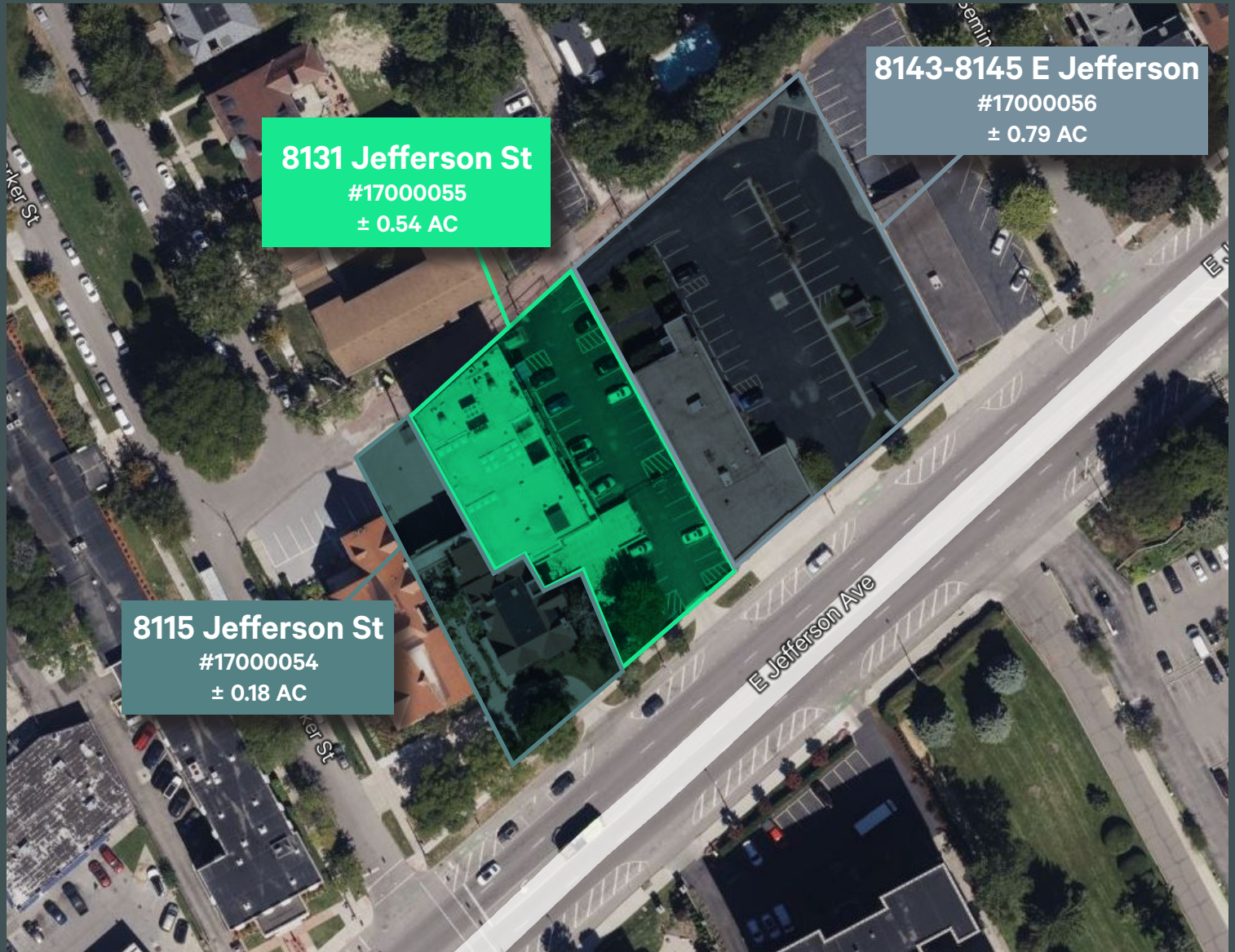
8131, 8115, & 8143 E Jefferson St
Detroit, Michigan

For Sale or Lease

Exterior Photos



Aerial



8131 Jefferson St
#17000055
± 0.54 AC

8143-8145 E Jefferson
#17000056
± 0.79 AC

8115 Jefferson St
#17000054
± 0.18 AC

Contact Us

Brendan George
Senior Vice President
+1 248 351 2039
brendna.george@cbre.com

Jasper Hanifi
Senior Associate
+1 248 351 2020
jasper.hanifi@cbre.com

© 2024 CBRE, Inc. All rights reserved. This information has been obtained from sources believed reliable, but has not been verified for accuracy or completeness. You should conduct a careful, independent investigation of the property and verify all information. Any reliance on this information is solely at your own risk. CBRE and the CBRE logo are service marks of CBRE, Inc. All other marks displayed on this document are the property of their respective owners, and the use of such logos does not imply any affiliation with or endorsement of CBRE. Photos herein are the property of their respective owners. Use of these images without the express written consent of the owner is prohibited.