



**TURN-KEY
COMMISSARY KITCHEN!**

5 WILLOW STREET | MOONACHIE, NJ 07074

EXECUTIVE SUMMARY

NAI James E. Hanson is pleased to present on an exclusive basis for lease, 5 Willow Street, Moonachie, NJ (the "Property"), a ±6,850 SF industrial building that is currently fit out as a turn key commissary kitchen in the Meadowlands. Near Routes 17, 3, 120, US-46, NJ Turnpike, I-95/I-80 and Teterboro Executive Airport.

Available immediately.

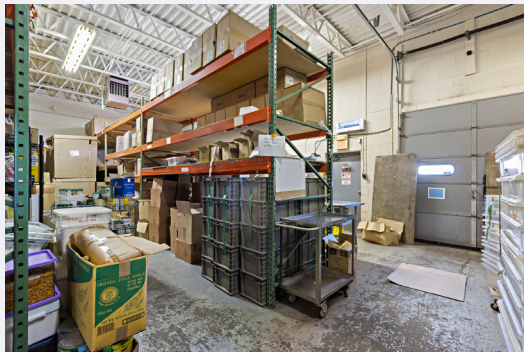
INQUIRE FOR PRICING

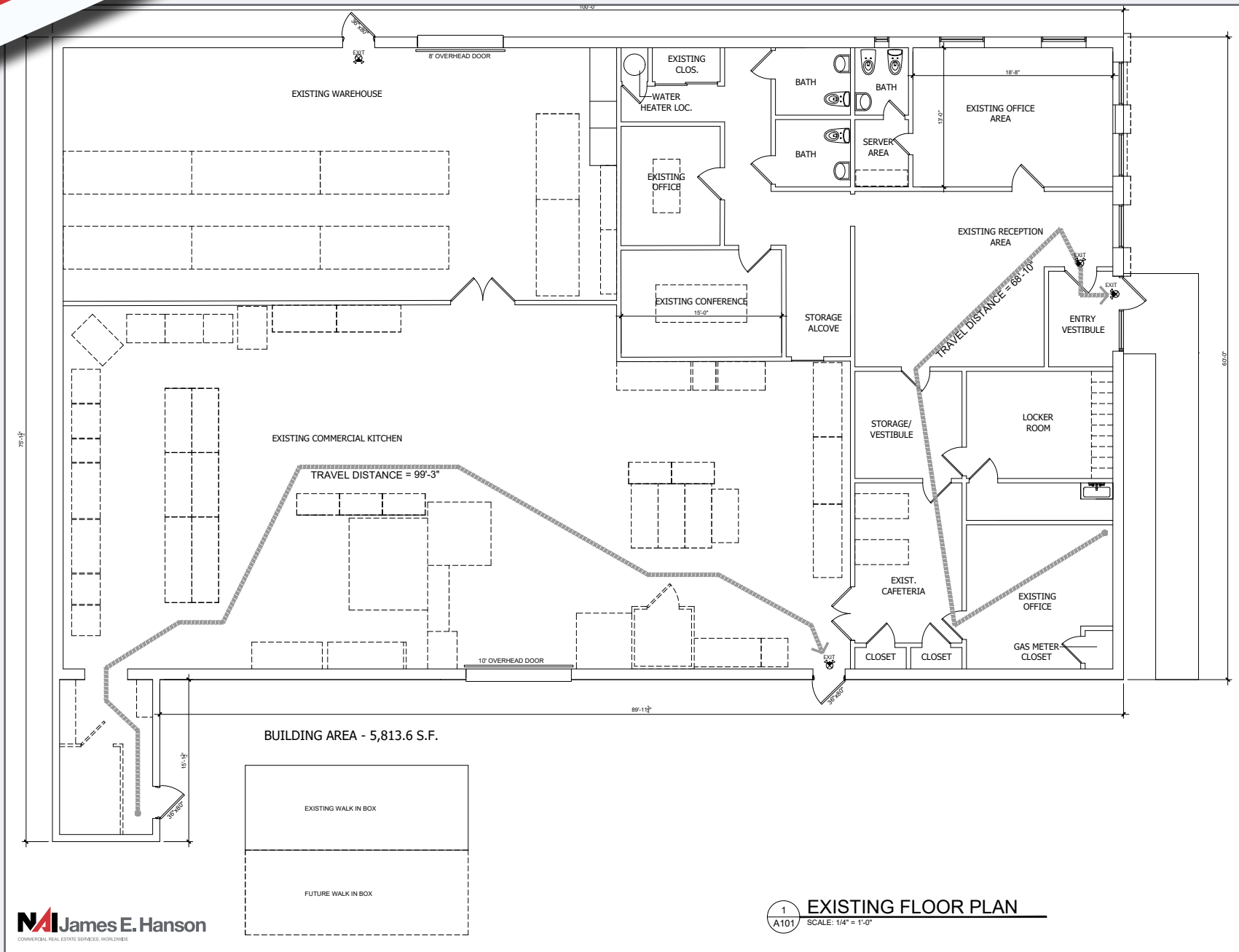
PROPERTY SUMMARY	
Address	5 Willow Street
Municipality	Moonachie
County	Bergen
Block Lot	72 2
Tax Class	4B (Industrial)
Real Estate Taxes	\$17,782.78 (\$2.59/SF)
Lot Size (SF)	±13,351
Building Size (SF)	±6,850
Zoning	LIB (Light Industrial B)

Jonathan M. Kristofich | Vice President
201 488 5800 x103 | jkristofich@naihanson.com

Andrew Somple | SIOR, SVP
201 488 5800 x151 | asomple@naihanson.com

William S. Pulzello | Associate
201 488 5800 x140 | wpulzello@naihanson.com

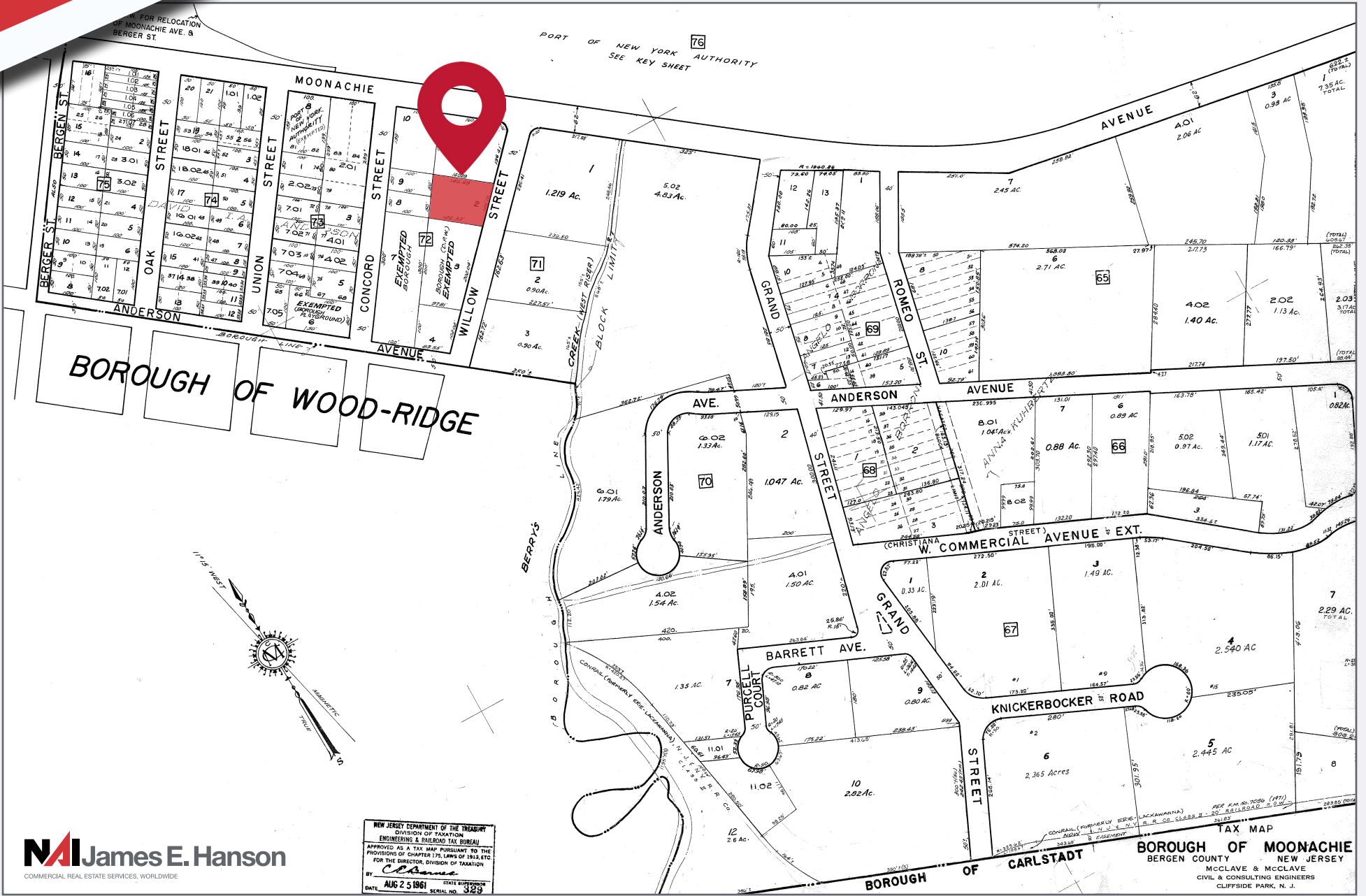




5 WILLOW STREET

MOONACHIE, NJ

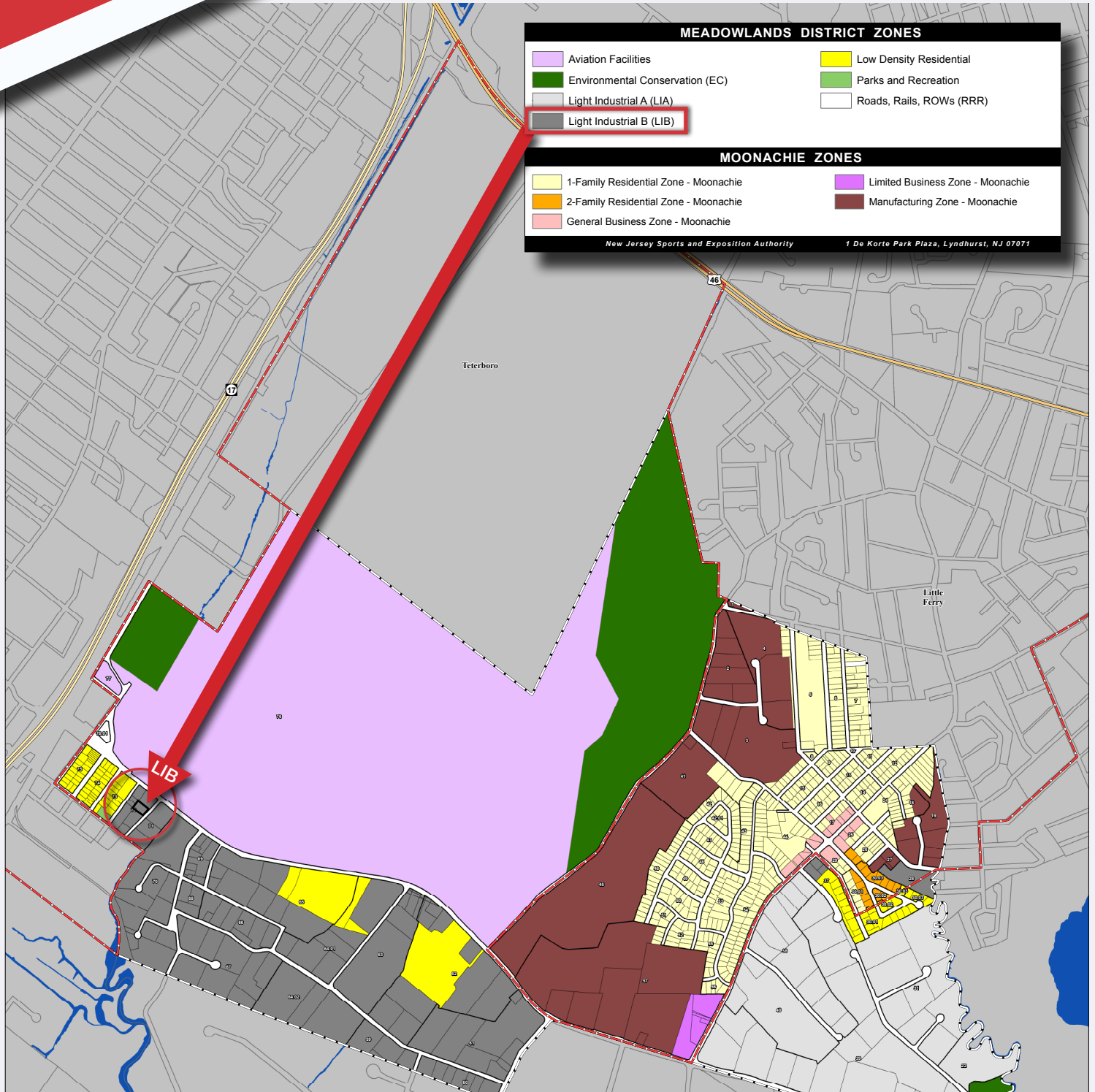
TAX MAP



NAI James E. Hanson
COMMERCIAL REAL ESTATE SERVICES, WORLDWIDE

NEW JERSEY DEPARTMENT OF THE TREASURY
DIVISION OF TAXATION
ENGINEERING & BARRISTER TAX BUREAU
APPROVED AS A TAX MAP PURSUANT TO THE
PROVISIONS OF CHAPTER 175, LAWS OF 1913, ETC.
FOR THE DIRECTOR, DIVISION OF TAXATION
BY: *[Signature]*
DATE: AUG 25 1961 STATE SUPERVISOR
SERIAL NO. 329

TAX MAP
BOROUGH OF MOONACHIE
BERGEN COUNTY NEW JERSEY
McCLAVE & McCLAVE
CIVIL & CONSULTING ENGINEERS
CLIFFSIDE PARK, N. J.



[CLICK HERE FOR FULL ZONING & REQUIREMENTS](#)



1.7 MILES TO TETERBORO AIRPORT

8.8 MILES TO GW BRIDGE

10.8 MILES TO LINCOLN TUNNEL

11 MILES TO HOLLAND TUNNEL

15.5 MILES TO NEWARK AIRPORT

19.9 MILES TO GOETHALS BRIDGE

21.4 MILES TO BAYONNE BRIDGE

SUBJECT PROPERTY

