

**FOR LEASE**



**833 - 873 WILLAMETTE STREET - EUGENE, OREGON**

## **PARK PLACE BUILDING DOWNTOWN OFFICE SUITES AVAILABLE**

- Multi-tenant building with modern and historic architecture
- EUGNet high-speed internet
- Elevator served
- Willamette Street frontage
- Excellent downtown location

*Please see the following pages for space information and lease rates*



[www.campbellre.com](http://www.campbellre.com)  
Licensed in the State of Oregon

*For more information contact:*

**BILLY POLLOCK**  
[billyp@campbellre.com](mailto:billyp@campbellre.com) | (541) 285-8865

**BEN WANICHEK**  
[benw@campbellre.com](mailto:benw@campbellre.com) | (541) 520-0067

**BILL NEWLAND**  
[bill@campbellre.com](mailto:bill@campbellre.com) | (541) 484-2214

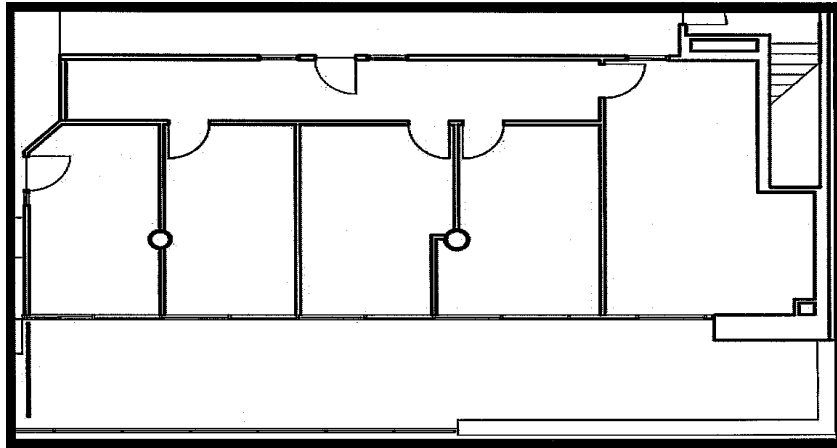
**TIM CAMPBELL**  
[timc@campbellre.com](mailto:timc@campbellre.com) | (541) 484-2214



# OFFICE SUITE 300

- THIRD FLOOR OFFICE SUITE
- 1,625 SQUARE FEET
- EXPANSIVE WINDOW LINE
- LARGE OUTDOOR BALCONY
- ELEVATOR SERVED

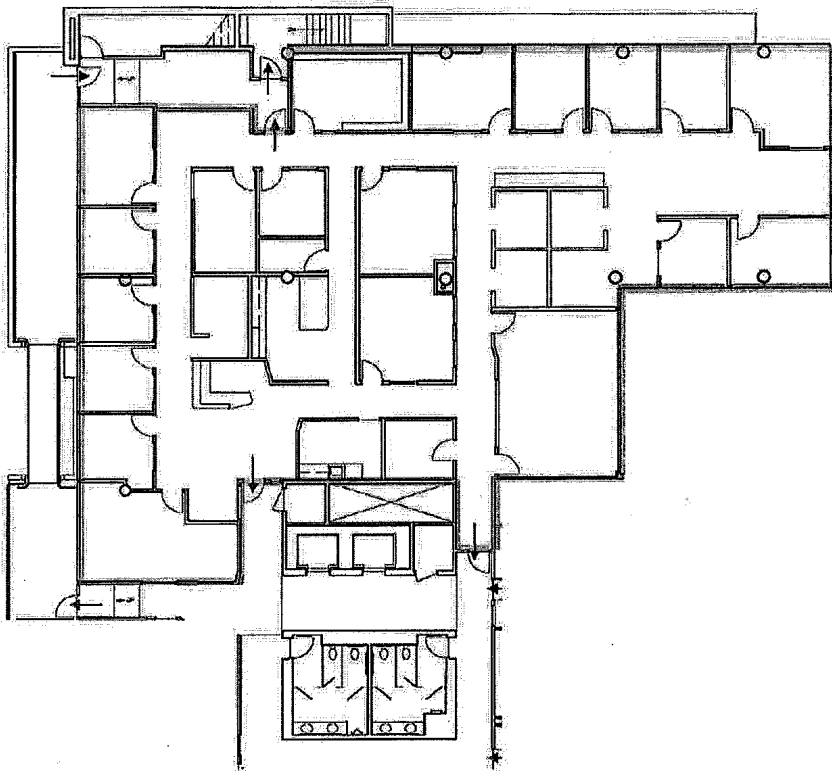
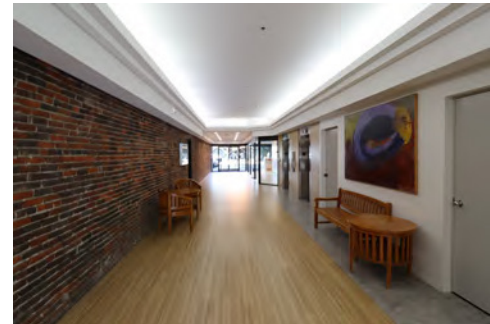
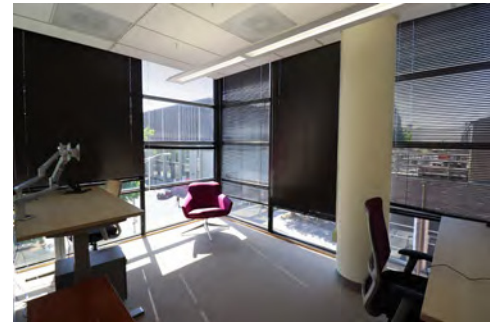
*Lease Rate:* \$1.75/SF, FULL SERVICE



# OFFICE SUITE 320

- SUITE 320 - 5,965 SQUARE FEET
- APPROXIMATELY 17 PRIVATE OFFICES
- SPACIOUS OPEN AREA FOR CUBICLE SET-UP
- LARGE, WELL-LIT CONFERENCE ROOM
- RECEPTION, LOBBY, BREAK ROOM, AND OUTDOOR SEATING AREA

*Lease Rate:* \$1.70/SF, MODIFIED GROSS



The information in this package was obtained from sources deemed reliable, and is not guaranteed by agent. Package is subject to change, error or omission, prior sale or lease, correction or withdrawal. Any party contemplating purchase is urged to conduct their own independent study and inspection.





The information in this package was obtained from sources deemed reliable, and is not guaranteed by agent. Package is subject to change, error or omission, prior sale or lease, correction or withdrawal. Any party contemplating purchase is urged to conduct their own independent study and inspection.