



## **3721 S Kingshighway Blvd**

3721 S Kingshighway Blvd, Saint Louis, MO 63109

**Brad Modde**

[bradm@garciaproperties.com](mailto:bradm@garciaproperties.com)

3537 S Kingshighway Blvd., Saint Louis, MO 63139

314 - 353 - 0336



# 3721 S Kingshighway Blvd

Rental Rate Available Upon Request

Flexible 2,570 SF office/retail space available in a prime location near restaurants and amenities. The space can be divided into two separate units and includes multiple private offices, conference rooms, an ADA restroom, and a break room. Large basement storage area provides ample additional space.



Rental Rate:	Upon Request
Property Type:	Office
Building Class:	B
Rentable Building Area:	6,215 SF
Year Built:	1927
Walk Score ®:	83 (Very Walkable)
Transit Score ®:	39 (Some Transit)
Rental Rate Mo:	Upon Request

## 1st Floor

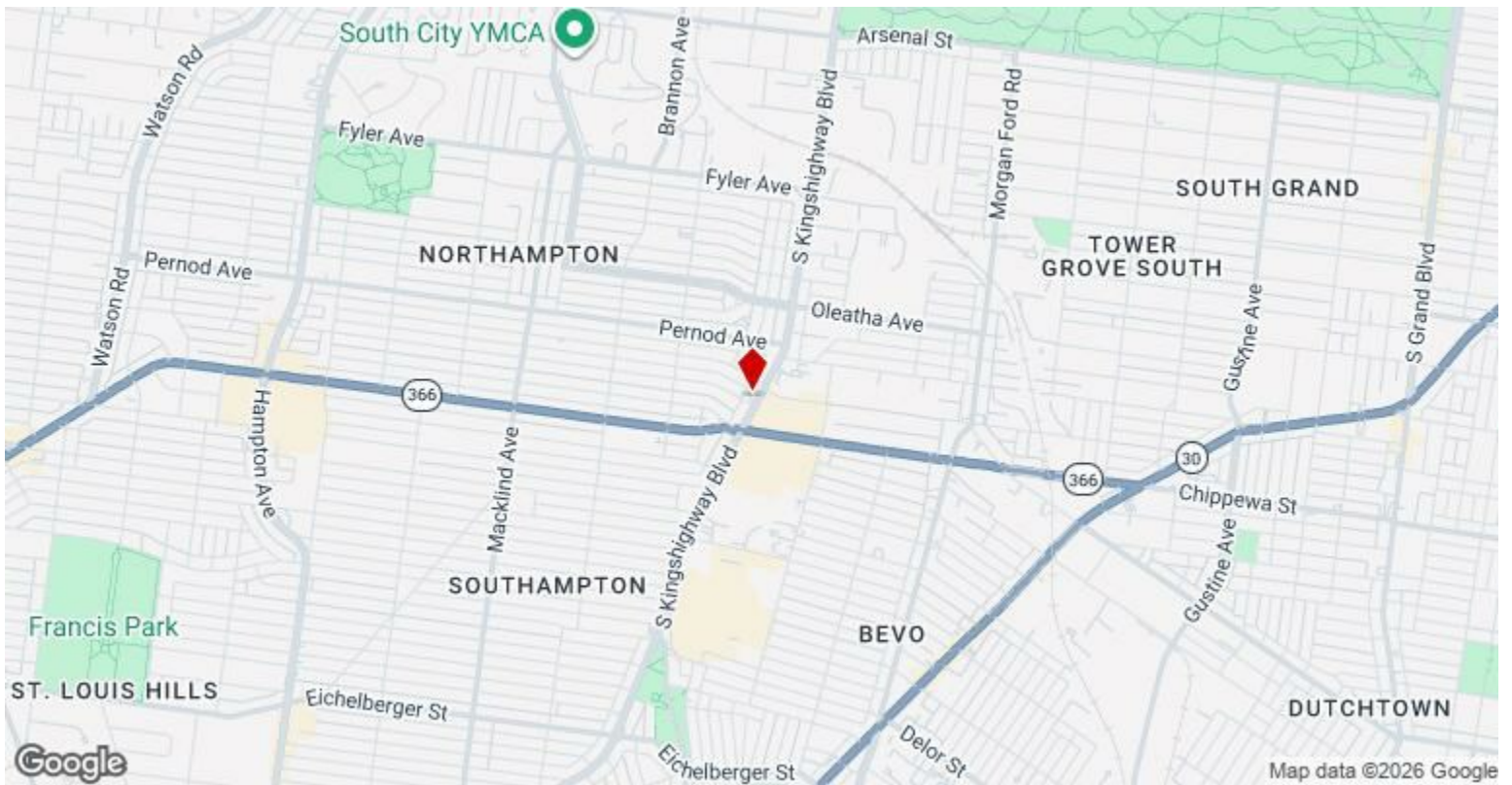
Space Available	2,570 SF
Rental Rate	Upon Request
Date Available	Now
Service Type	TBD
Built Out As	Standard Office
Space Type	Relet
Space Use	Office/Retail
Lease Term	1 - 3 Years

---

## Major Tenant Information

---

Tenant	SF Occupied	Lease Expired
Garcia Holdings III LLC	-	



## 3721 S Kingshighway Blvd, Saint Louis, MO 63109

Flexible 2,570 SF office/retail space available in a prime location near restaurants and amenities. The space can be divided into two separate units and includes multiple private offices, conference rooms, an ADA restroom, and a break room. Large basement storage area provides ample additional space. Ideal for a wide range of business uses.

# Property Photos

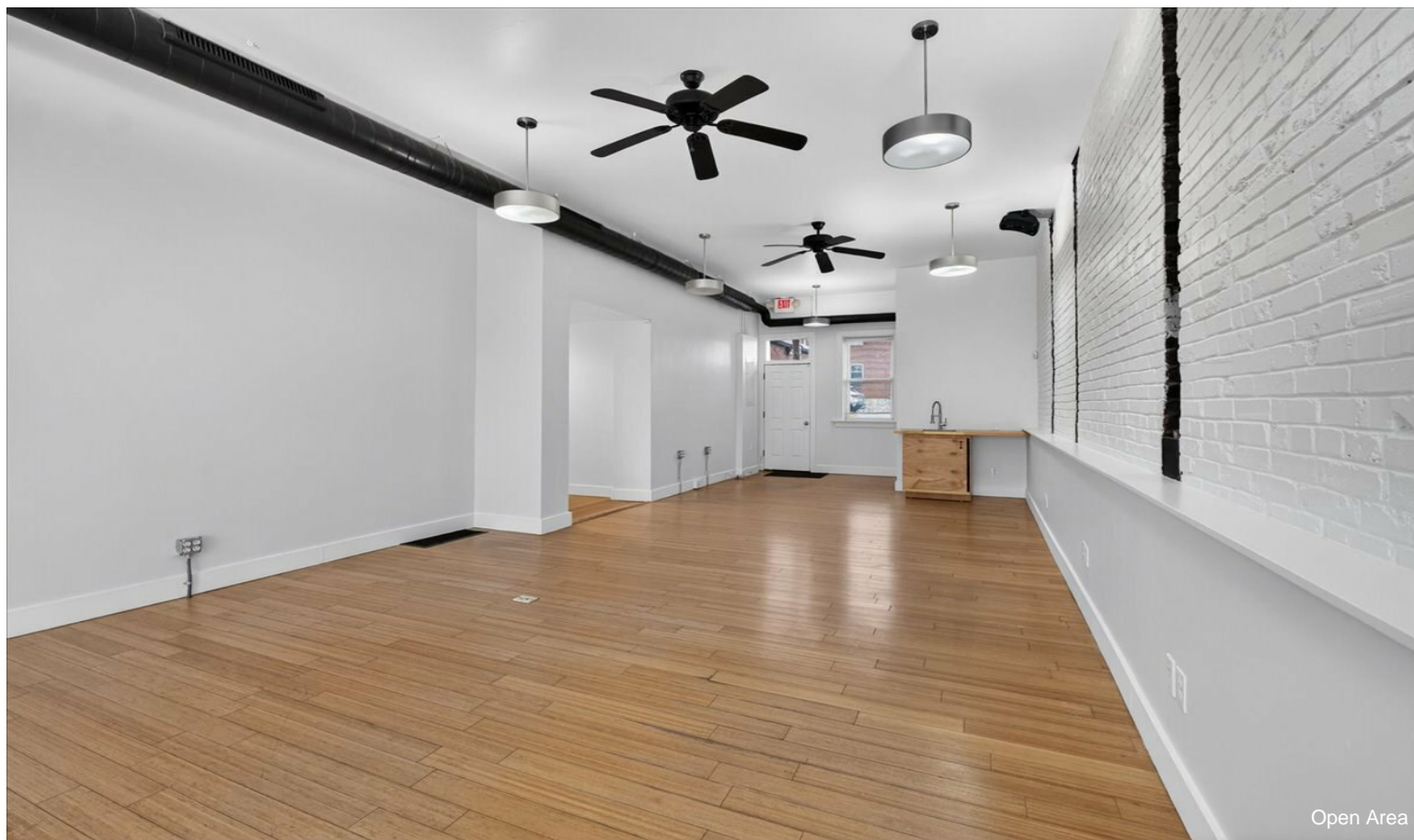


Storefront

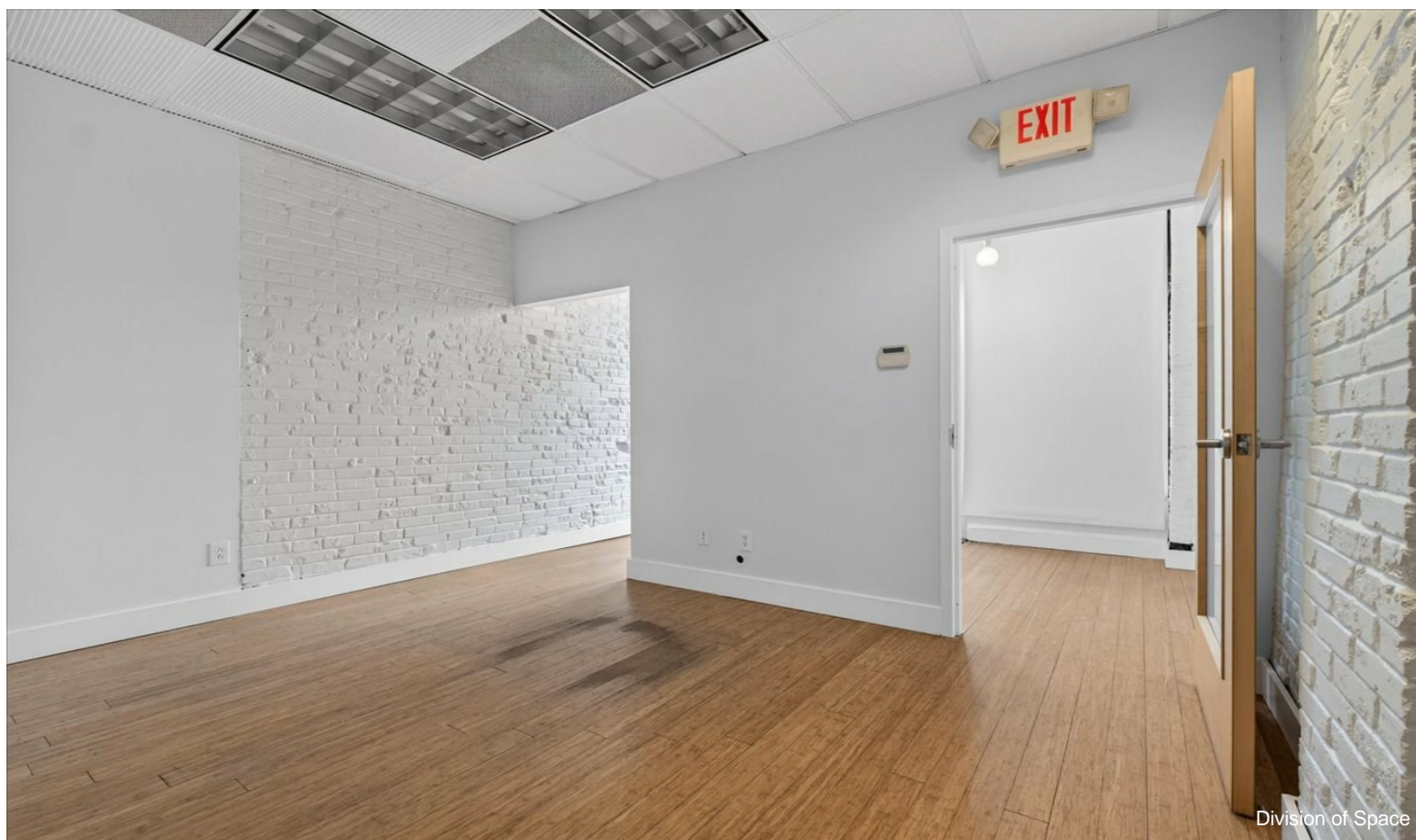


Storefront

# Property Photos



Open Area



Division of Space

# Property Photos



Office Space



Back Exit Door

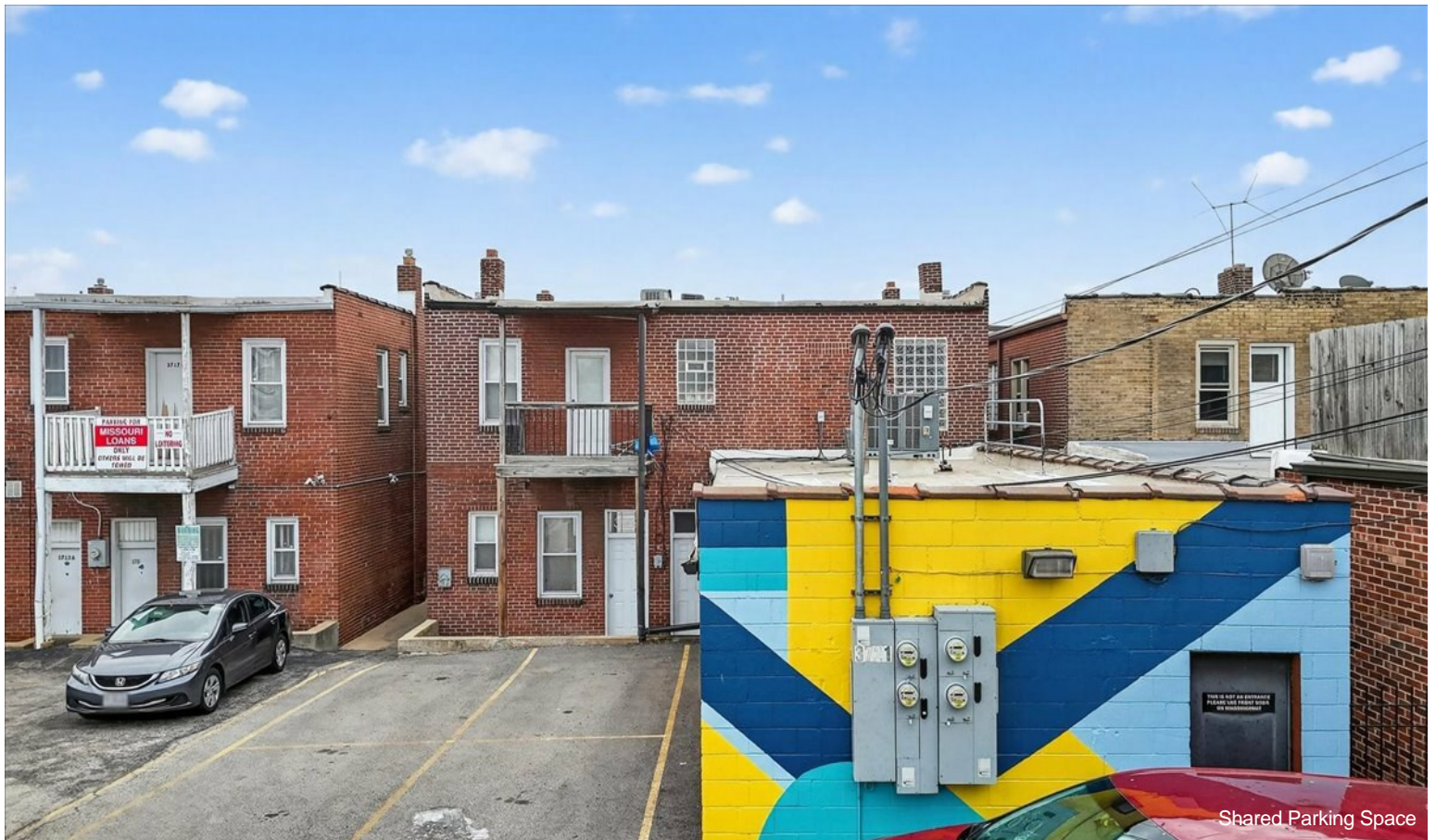
# Property Photos



# Property Photos



Bathroom



Shared Parking Space