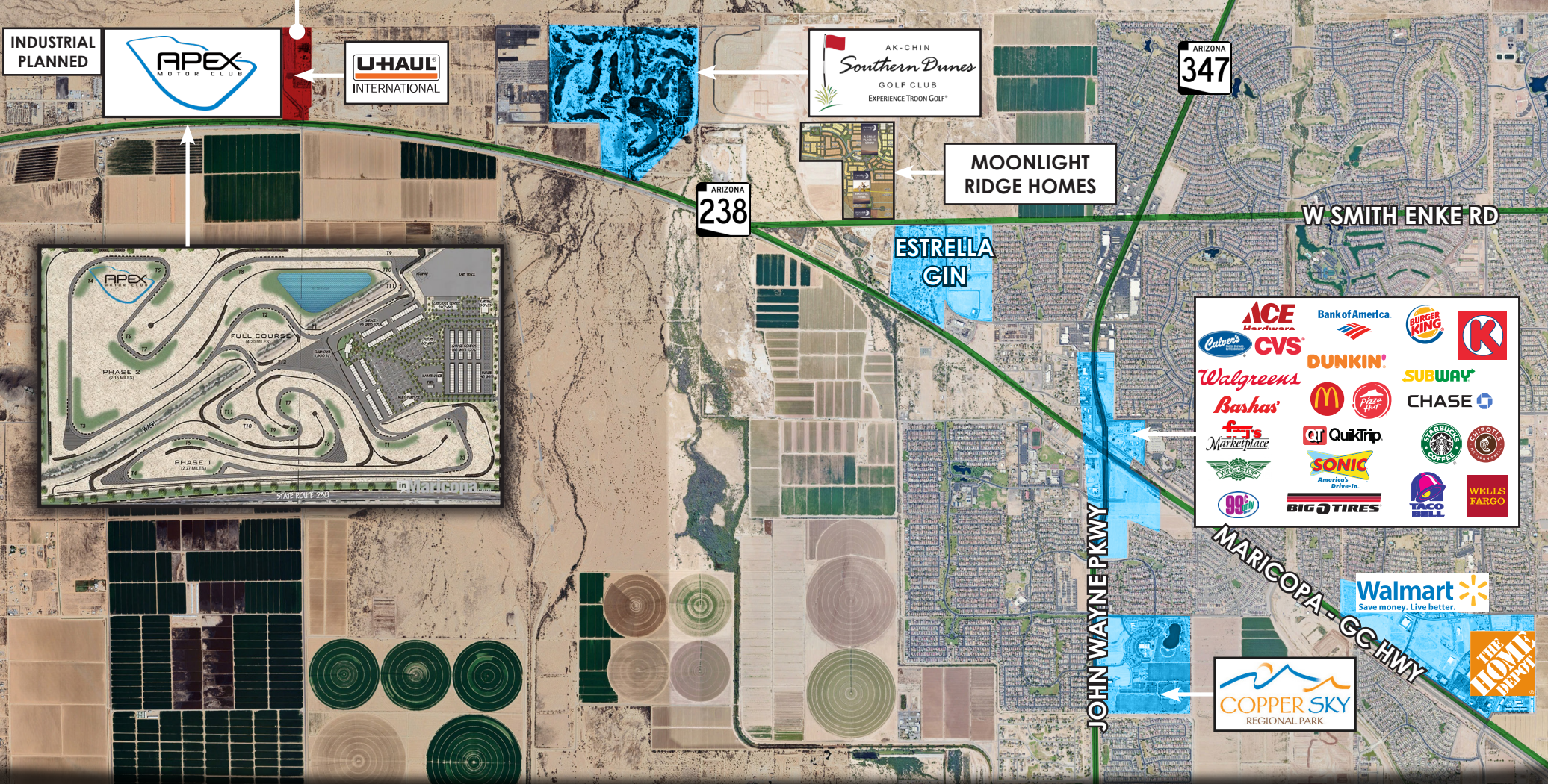


RALSTON INDUSTRIAL PARK LAND FOR LEASE/SALE

22423 N. RALSTON RD. | MARICOPA, AZ

RALSTON INDUSTRIAL PARK



Available Individually or Bundled!
Call / Email For Current Availability

TRENT RUSTAN
D 480.966.5155
M 602.550.0709
trustan@cpiaz.com

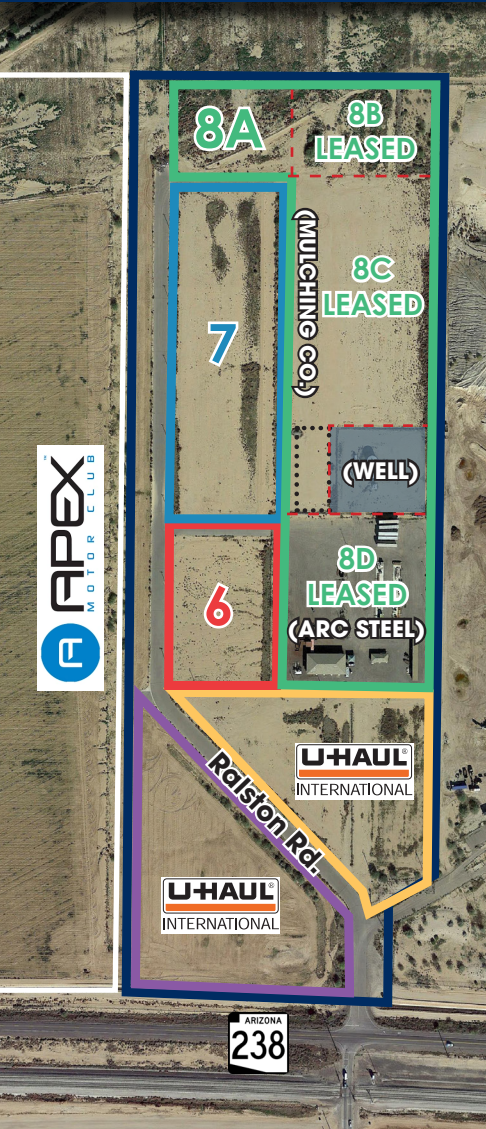
 **COMMERCIAL PROPERTIES INC.**
Locally Owned. Globally Connected. GORFAC INTERNATIONAL

TEMPE: 2323 W University Drive, Tempe, AZ 85281 | 480.966.2301
SCOTTSDALE: 8767 E Via de Commercio, Suite 101, Scottsdale, AZ 85258 | www.cpiaz.com

The information contained herein has been obtained from various sources. We have no reason to doubt its accuracy; however, J & J Commercial Properties, Inc. has not verified such information and makes no guarantee, warranty or representation about such information. The prospective buyer or lessee should independently verify all dimensions, specifications, floor plans, and all information prior to the lease or purchase of the property. All offerings are subject to prior sale, lease, or withdrawal from the market without prior notice. Effective 03 16 22

RALSTON INDUSTRIAL PARK LAND FOR LEASE/SALE

22423 N. RALSTON RD. | MARICOPA, AZ



PARCEL INFORMATION:

AVAILABLE INDIVIDUALLY OR BUNDLED!

Parcel #	Lot	Acres	Status
510-80-008	8A	±1.9	LEASED
	8B	±3.06	LEASED
	8C	±6.7	LEASED
	8D	±4.1	LEASED
510-80-007	7	±5.22	FOR LEASE
510-80-006	6	±2.3	FOR LEASE/SALE
510-80-005	5	±5.67	SOLD (10/2025)
510-80-004	4	±5.26	SOLD (10/2025)
Well	-	±1.53	
Road	-	±6.05	
Entire Project	-	±41.79	

DETAILS:

- Pads Available
- Industrial Zoning (I-2)
- Power Available
- Water Well Access Available
- Adjacent to 280 Acre APEX Motorclub
- Just North of Highway 238
- 2 Miles West of AkChin Southern Dunes Golf Club
- Call for Lease/Sale Pricing

WHY CHOOSE MARICOPA?

- Maricopa is experiencing unprecedented population growth.
- A captive and rapidly growing market that needs new businesses and services.
- A young, high-income community wanting local shopping and dining options.
- City incentives for projects meeting established performance criteria.



Maricopa, AZ has a population of 72,614 people with a median age of 37.6 and a median household income of \$89,014. Between 2020 and 2024 the population of Maricopa, AZ increased 4.3%. (COSTAR 2025)

Available Individually or Bundled!
Call / Email For Current Availability

TRENT RUSTAN
D 480.966.5155
M 602.550.0709
trustan@cpiaz.com

COMMERCIAL PROPERTIES INC.
Locally Owned. Globally Connected. CORFAC INTERNATIONAL

TEMPE: 2323 W University Drive, Tempe, AZ 85281 | 480.966.2301
SCOTTSDALE: 8767 E Via de Commercio, Suite 101, Scottsdale, AZ 85258 | www.cpiaz.com