

# FOR LEASE

## RARE MODERN EAST COUNTY OFFICE



\$26-30

Contact

Graham Cole Peterson

Direct: 503.319.4267

GrahamColePeterson@gmail.com

Office: 503.249.1709



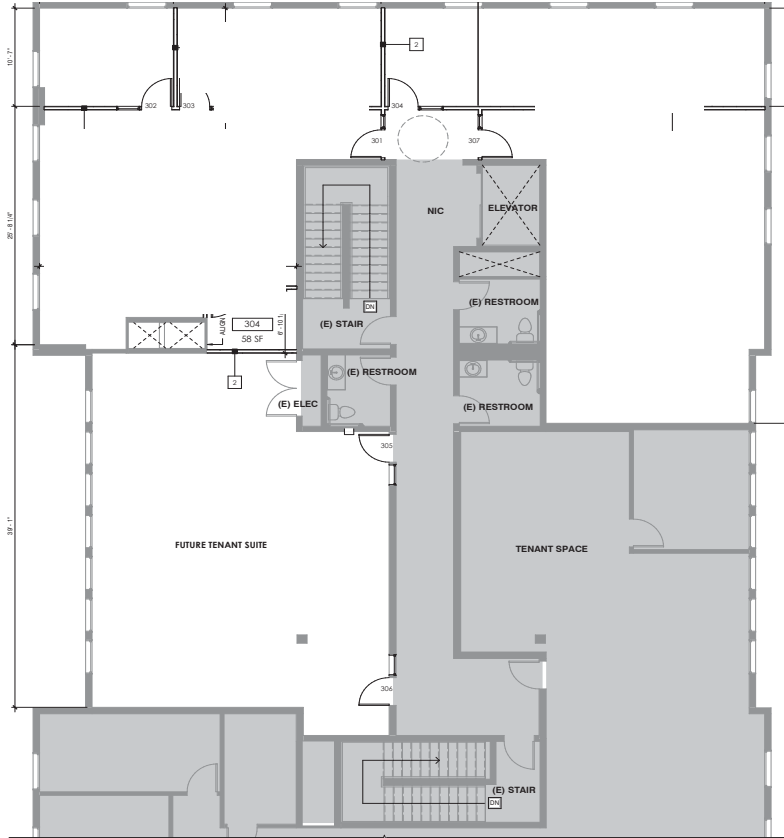
Portland Office  
Oregon City Office

2105 NE Cesar E Chavez Blvd. Suite 220 Portland, Oregon 97212  
502 7th Street Suite 208, Oregon City, OR 97045

# FOR LEASE

## OFFICE SPACE

### ROCKWOOD MARKET HALL



Options from 500-2,728 SF  
– **\$26/SF GROSS**

#### Contact

Graham Cole Peterson

Direct: 503.319.4267

GrahamColePeterson@gmail.com

Office: 503.249.1709



Portland Office  
Oregon City Office

2105 NE Cesar E Chavez Blvd. Suite 220 Portland, Oregon 97212  
502 7th Street Suite 208, Oregon City, OR 97045

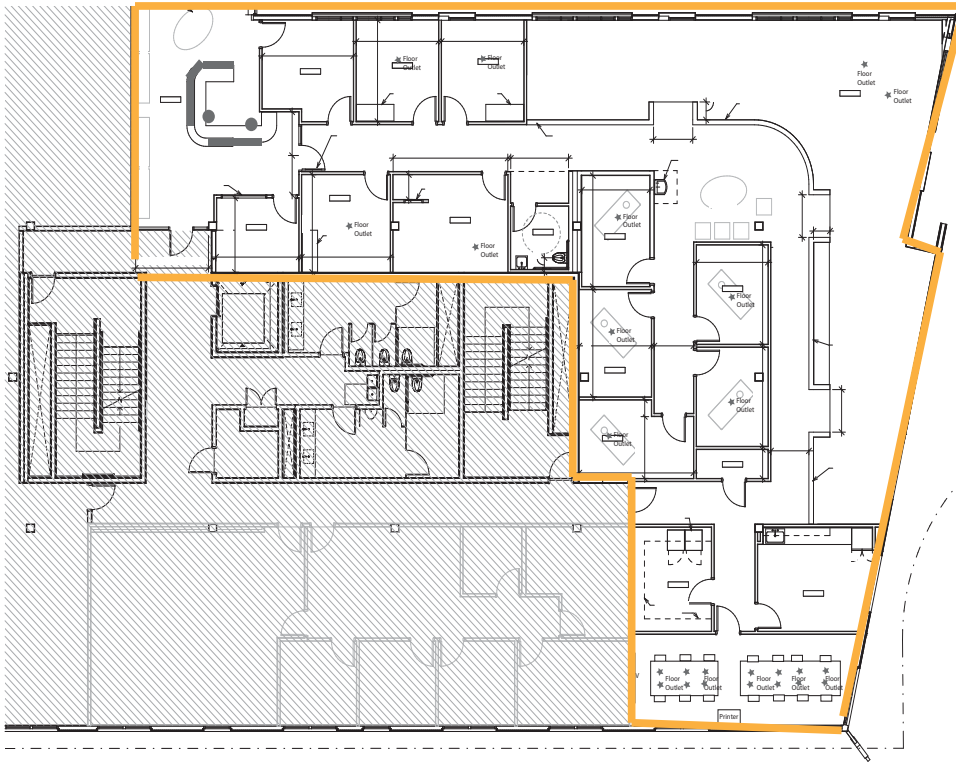


# FOR LEASE

2ND GEN MEDICAL/OFFICE

LUMEN BUILDING

2,000 - 6,265 SF \$30/SF Gross



18613 SE Stark Street

Contact

Graham Cole Peterson

Direct: 503.319.4267

GrahamColePeterson@gmail.com

Office: 503.249.1709



Portland Office  
Oregon City Office

2105 NE Cesar E Chavez Blvd. Suite 220 Portland, Oregon 97212  
502 7th Street Suite 208, Oregon City, OR 97045