

THE CONCORD CENTER OFFICE SPACE FOR LEASE 169 - 5,302 SF



*Welcome to
The Concord Center*

*formerly
The Rumford Press
1897 - 1983*

10 Ferry Street | Concord, NH

The Concord Center building offers unmatched accessibility and visibility, as it is located immediately off Interstate 93, and is in close proximity to restaurants, banks, hotels, and much more. This mill-style building formerly occupied by the Rumford Press, offers a wide range of options, from a single office, to large warehouse space. In addition to including on-site maintenance and cleaning, tenants also enjoy use of on-site amenities including a full-service café, fitness center and conference room.



Specifications:

TYPE OF CENTER:

Professional Office
Warehouse

GROSS LEASABLE AREA:

173,445 (88,885 office)

PARKING:

Ample on-site parking

FIRE PROTECTION:

Fully Sprinklered

HVAC:

Natural Gas-Fired
Roof Top Units (RTU's)

FIBER:

Fairpoint/Comcast

SEWER/WATER:

City of Concord

POWER:

Unitil

GAS:

Liberty Utilities

Availabilities:

Suite 200A	890 SF
Suite 201/201A	4,248 SF*
Suite 301A	169 SF
Suite 304	371 SF
Suite 306	188 SF
Suite 314	852 SF
Suite 318	1,455 SF
Suite 408	334 SF
Suite 420	922 SF
Suite 425	1,534 SF
Suite 427	2,136 SF
Suite 427b Storage A	171 SF
Suite 429	898 SF-5,302 SF

*Medical Space

Amenities:

- Prominent location in Concord's Business District
- On-site Café
- Shared Conference Room
- Fitness Center
- Passenger & Freight Elevators
- Over Free Parking Spaces
- On-Site Maintenance Staff
- Daily Janitorial Service
- Direct Access to Major Highways & Close Proximity to Manchester-Boston Airport
- Walking distance to downtown, New Hampshire State House, New Hampshire Supreme Court, restaurants and retail shops.





Common Areas



Visibility on Main Street



Newly Renovated Fitness Center



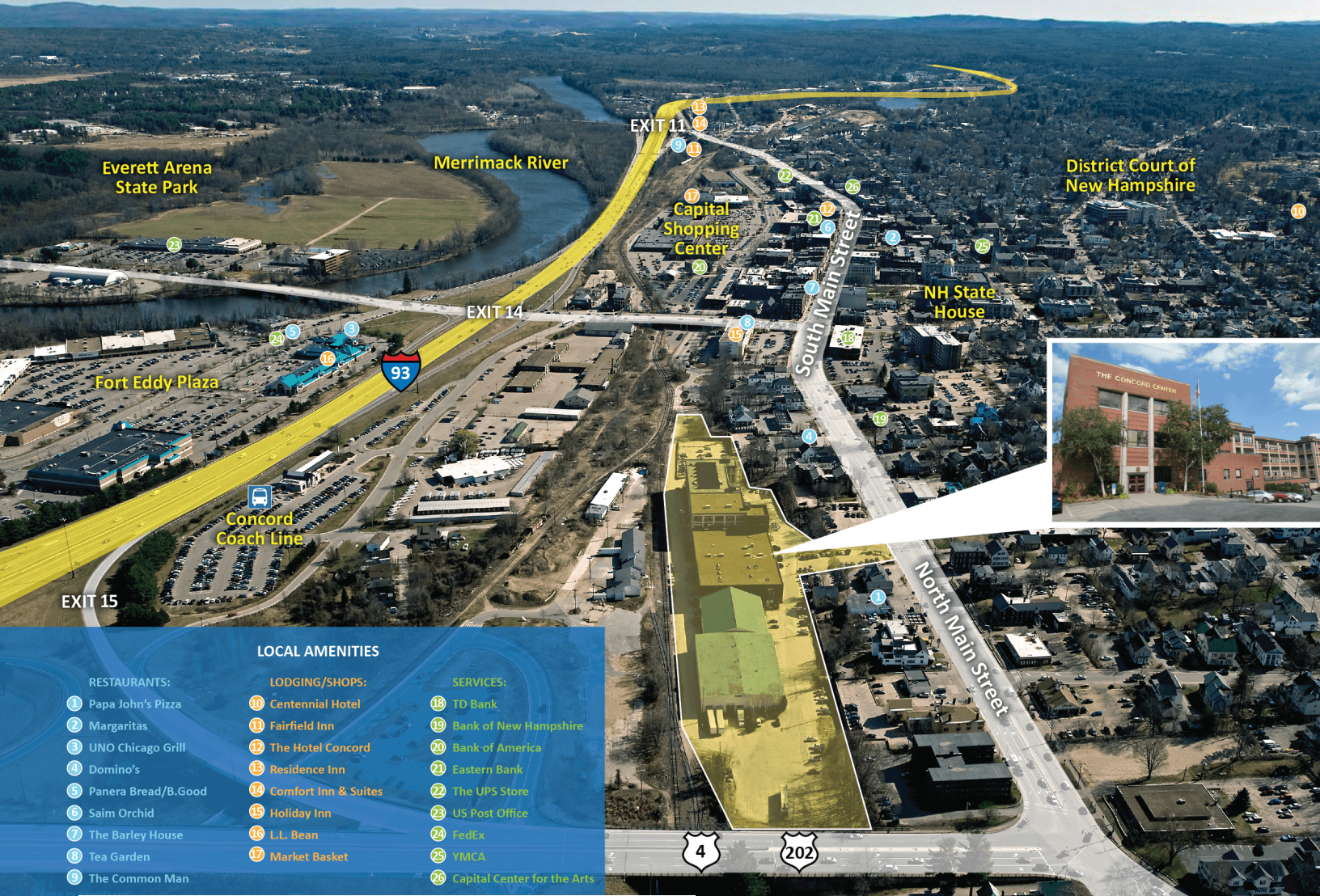
Shared Conference Room



Full-Service Café



Walking Distance to Downtown Concord



LOCAL AMENITIES

RESTAURANTS:

- 1 Papa John's Pizza
- 2 Margaritas
- 3 UNO Chicago Grill
- 4 Domino's
- 5 Panera Bread/B.Good
- 6 Saim Orchid
- 7 The Barley House
- 8 Tea Garden
- 9 The Common Man

LODGING/SHOPS:

- 10 Centennial Hotel
- 11 Fairfield Inn
- 12 The Hotel Concord
- 13 Residence Inn
- 14 Comfort Inn & Suites
- 15 Holiday Inn
- 16 L.L. Bean
- 17 Market Basket

SERVICES:

- 18 TD Bank
- 19 Bank of New Hampshire
- 20 Bank of America
- 21 Eastern Bank
- 22 The UPS Store
- 23 US Post Office
- 24 FedEx
- 25 YMCA
- 26 Capital Center for the Arts

JOHNFLATLEY
Company

**For more information,
or to schedule a tour, please contact:**

Tom Maregni
Direct 781.917.5306
Office 781.380.7731
thomas.maregni@johnflatleyco.com

**Corporate Headquarters | 45 Dan Rd, Suite 320, Canton, MA 02021 | 781.380.7731
www.johnflatleyco.com | info@johnflatleyco.com**