



CHARLOTTE, NC 28203

1315 EAST BLVD

+/- 9,009 SF RESTAURANT / RETAIL WITH PATIO AVAILABLE FOR LEASE

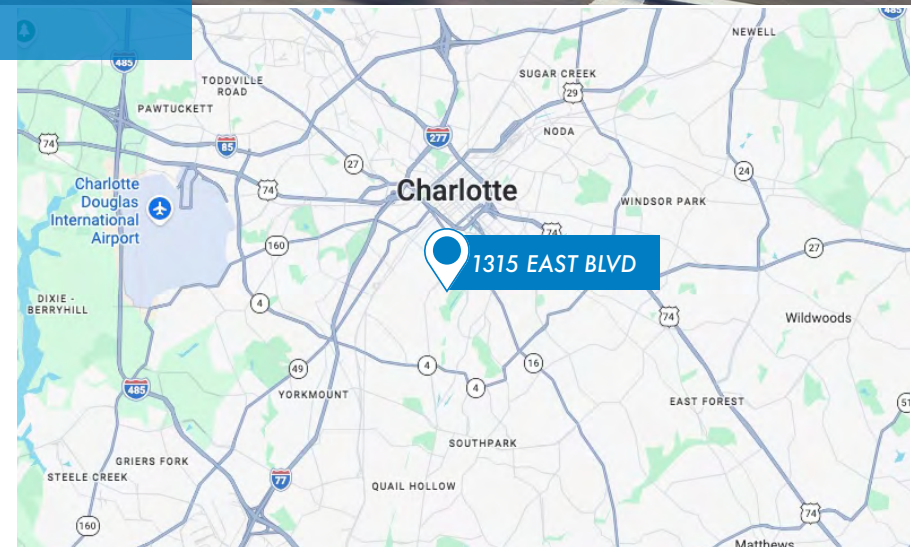


9,009 SF RETAIL/RESTAURANT FOR LEASE

1315 EAST BLVD, CHARLOTTE, NC

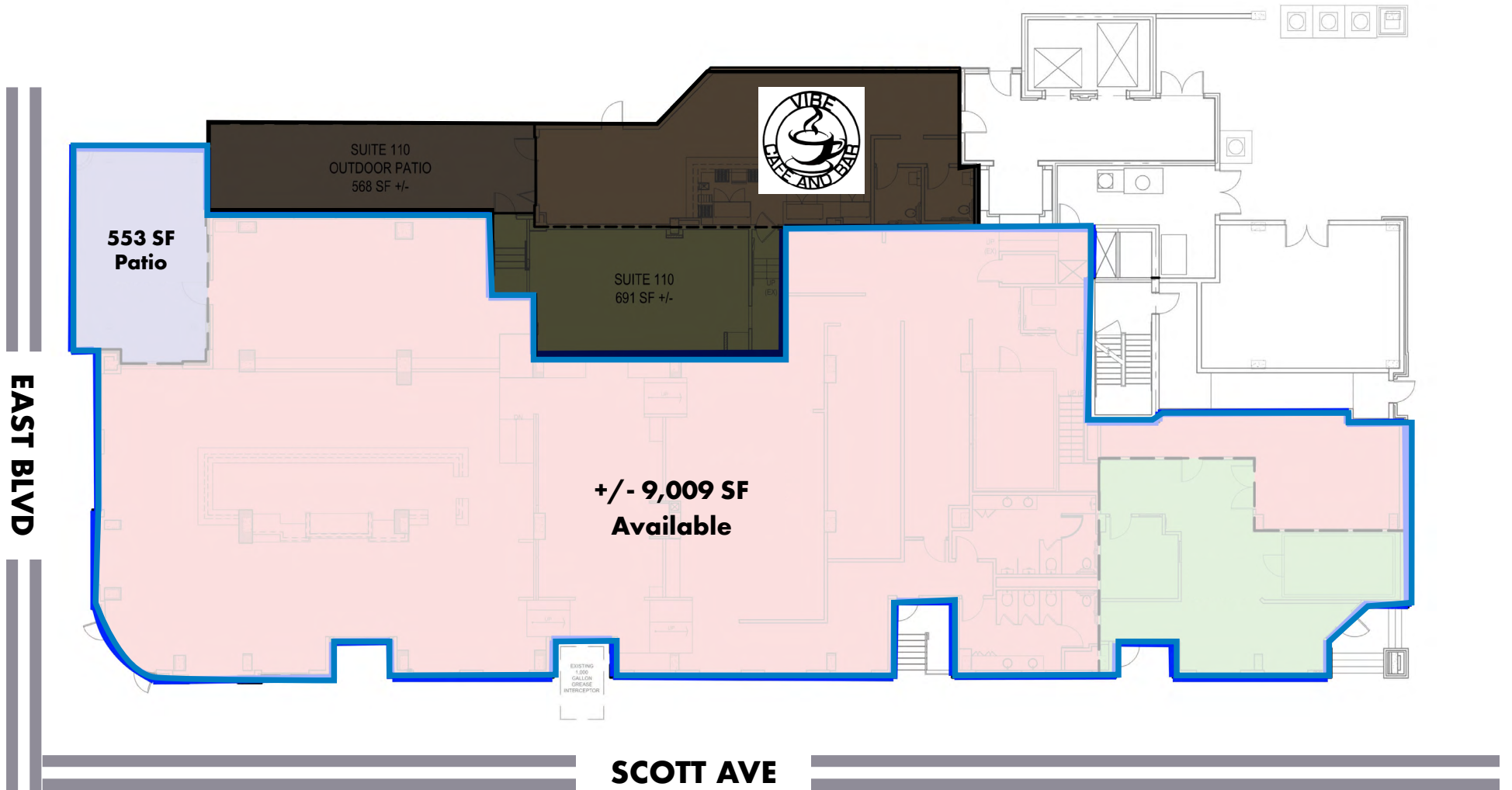
PROPERTY INFORMATION

- 9,009 SF ground-floor, second-generation restaurant space with 553 SF patio located in the Dilworth neighborhood
- Predominantly open floor plan featuring an outdoor patio, full kitchen, bar, and private restroom stalls
- Highly visible corner space with excellent exposure along East Boulevard and Scott Avenue
- Situated in Dilworth, one of Charlotte's most desirable neighborhoods, known for its walkability and strong mix of popular restaurants and retailers
- Convenient access to South End, Midtown, and Uptown Charlotte
- Call for pricing



DAVIS HAHN
704.534.0116
davis@ascent.re



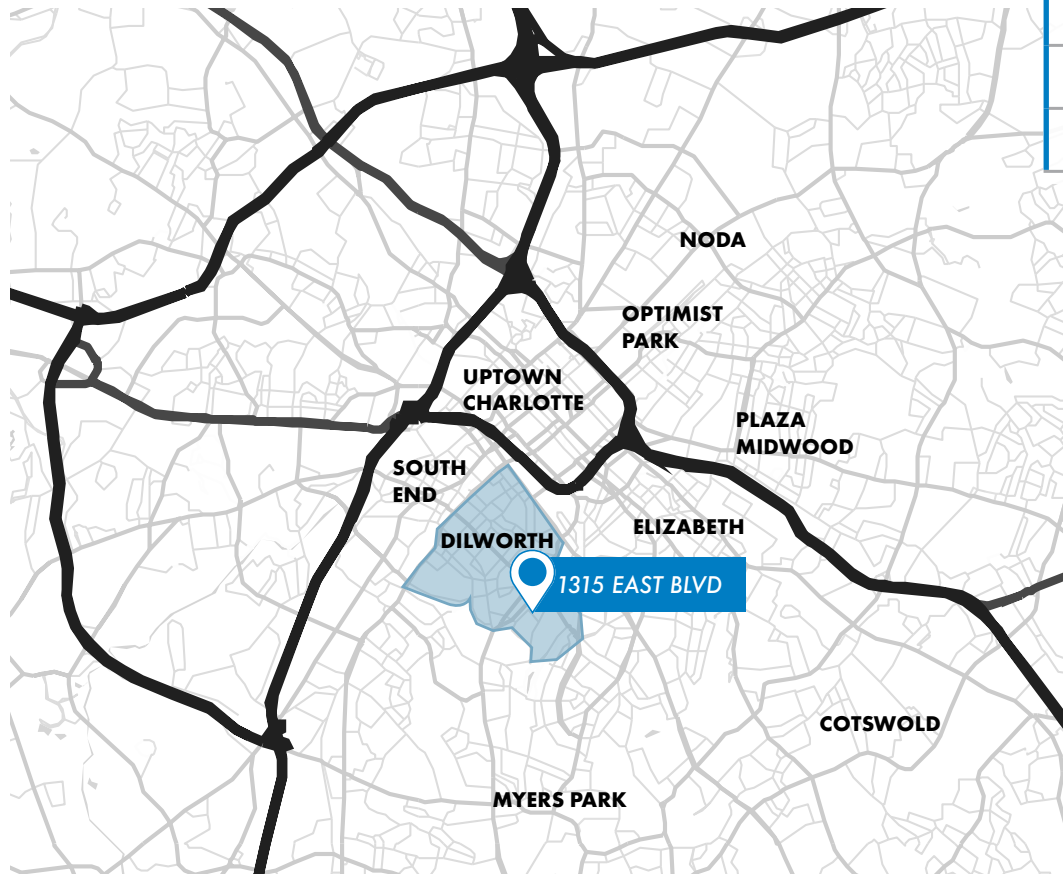


DILWORTH NEIGHBORHOOD

1315 EAST BLVD, CHARLOTTE, NC
9,009 SF RETAIL / RESTAURANT FOR LEASE

Nestled just south of Uptown, Dilworth is celebrated for its charming bungalows and picturesque, tree-lined streets. The neighborhood features excellent walkability, a welcoming atmosphere for families, and convenient access to an array of quality eateries and retail options. Dilworth fosters a tight-knit community with connections to cultures worldwide. Residents can indulge in a variety of international cuisines at local restaurants, while unique shops showcase crafts and art from across the globe.

DEMOGRAPHICS	1 MILE	3 MILES	5 MILES
Population (2024)	13,926	130,147	287,379
Population Proj. (2029)	14,688	139,011	306,216
Median Home Value	\$919,517	\$605,433	\$449,043
Avg Household Income	\$158,147	\$123,807	\$108,231
Employees	34,557	164,710	252,316



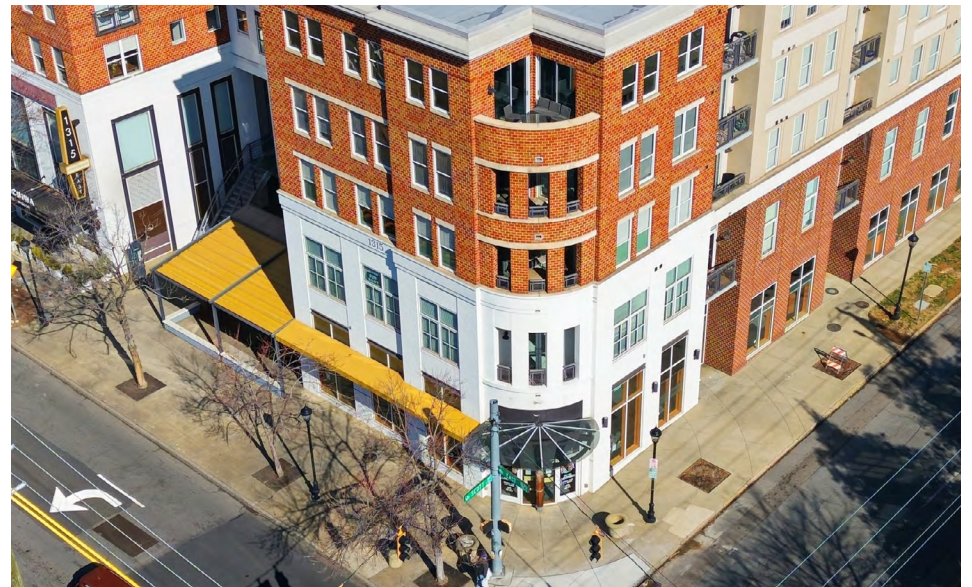
DAVIS HAHN
704.534.0116
davis@ascent.re





PROPERTY PHOTOS

1315 EAST BLVD, CHARLOTTE, NC
9,009 SF RETAIL / RESTAURANT FOR LEASE



DAVIS HAHN
704.534.0116
davis@ascent.re

