



ARROWHEAD COMMONS

18275 N 59th Ave, Bldg H, Ste. 146 | Glendale, AZ 85308

Medical Office Condo Space
**AVAILABLE
FOR LEASE**

For More Information, Please Contact:

Eric Butler

D 480.522.2813

M 602.809.6570

ebutler@cpiaz.com

Phill Tomlinson

D 480.522.2800

M 480.330.8897

ptomlinson@cpiaz.com

The information contained herein has been obtained from various sources. We have no reason to doubt its accuracy; however, J & J Commercial Properties, Inc. has not verified such information and makes no guarantee, warranty or representation about such information. The prospective buyer or lessee should independently verify all dimensions, specifications, floor plans, and all information prior to the lease or purchase of the property. All offerings are subject to prior sale, lease, or withdrawal from the market without prior notice.

01 29 26



COMMERCIAL PROPERTIES INC.

Locally Owned. Globally Connected. CORFAC INTERNATIONAL

TEMPE: 2323 W University Drive, Tempe, AZ 85281 | 480.966.2301
SCOTTSDALE: 8767 E Via de Commercio, Suite 101, Scottsdale, AZ 85258 | www.cpiatz.com



MULTI-TENANT MEDICAL OFFICE PLAZA

Arrowhead Commons in Glendale, Arizona, is a well-established multi-tenant medical and professional office plaza recognized for its Class-B professional office condominiums. Its prime location makes it a highly desirable hub for medical practitioners and related services, benefiting from the synergy of nearby healthcare facilities and a strong surrounding residential community.

The plaza itself is characterized by its multiple buildings, featuring direct patient access to suites, ample parking (including covered options), and prominent signage opportunities.

Additional Highlights:

- Close Proximity to Arrowhead Hospital Campus
- Easy Access to Loop 101 Freeway
- Just South of Midwestern University Campus
- Building Signage Available

PROPERTY SUMMARY

Address	18275 N 59th Ave, Bldg H, Ste. 146 Glendale, AZ 85308
Building Size	±3,920 SF
Year Built	2004
Building Class	B
Zoning	C-O/SC
Tenancy	Multi-Tenant
Parking Ratio	5.00/1,000

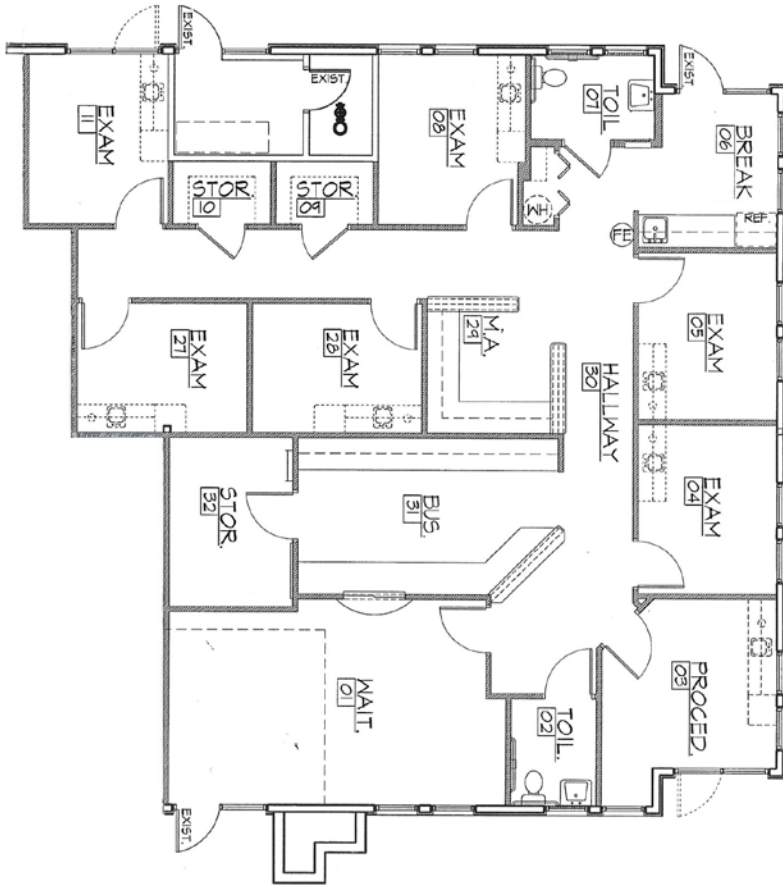


The information contained herein has been obtained from various sources. We have no reason to doubt its accuracy; however, J & J Commercial Properties, Inc. has not verified such information and makes no guarantee, warranty or representation about such information. The prospective buyer or lessee should independently verify all dimensions, specifications, floor plans, and all information prior to the lease or purchase of the property. All offerings are subject to prior sale, lease, or withdrawal from the market without prior notice.

SUITE 146 | ±2,097 SF | \$26.00 NNN

Fully Built-Out Medical Clinic with Client Parking at Front Door & Building Signage

- Available Now
- Reception/Waiting Room
- 6 Exam Rooms
- Break Room
- Procedure Room
- 2 Restrooms



For More Information, Please Contact:

Eric Butler

D 480.522.2813

M 602.809.6570

ebutler@cpiaz.com

Phill Tomlinson

D 480.522.2800

M 480.330.8897

ptomlinson@cpiaz.com

The information contained herein has been obtained from various sources. We have no reason to doubt its accuracy; however, J & J Commercial Properties, Inc. has not verified such information and makes no guarantee, warranty or representation about such information. The prospective buyer or lessee should independently verify all dimensions, specifications, floor plans, and all information prior to the lease or purchase of the property. All offerings are subject to prior sale, lease, or withdrawal from the market without prior notice.

01 29 26



COMMERCIAL PROPERTIES INC.

Locally Owned. Globally Connected. CORFAC INTERNATIONAL

TEMPE: 2323 W University Drive, Tempe, AZ 85281 | 480.966.2301
SCOTTSDALE: 8767 E Via de Commercio, Suite 101, Scottsdale, AZ 85258 | www.cpiaz.com

SUITE 146



For More Information, Please Contact:

Eric Butler

D 480.522.2813

M 602.809.6570

ebutler@cpiaz.com

Phill Tomlinson

D 480.522.2800

M 480.330.8897

ptomlinson@cpiaz.com

The information contained herein has been obtained from various sources. We have no reason to doubt its accuracy; however, J & J Commercial Properties, Inc. has not verified such information and makes no guarantee, warranty or representation about such information. The prospective buyer or lessee should independently verify all dimensions, specifications, floor plans, and all information prior to the lease or purchase of the property. All offerings are subject to prior sale, lease, or withdrawal from the market without prior notice.

01 29 26



COMMERCIAL PROPERTIES INC.

Locally Owned. Globally Connected. CORFAC INTERNATIONAL

TEMPE: 2323 W University Drive, Tempe, AZ 85281 | 480.966.2301
SCOTTSDALE: 8767 E Via de Commercio, Suite 101, Scottsdale, AZ 85258 | www.cpiatz.com



For More Information, Please Contact:

Eric Butler

D 480.522.2813

M 602.809.6570

ebutler@cpiaz.com

Phill Tomlinson

D 480.522.2800

M 480.330.8897

ptomlinson@cpiaz.com

The information contained herein has been obtained from various sources. We have no reason to doubt its accuracy; however, J & J Commercial Properties, Inc. has not verified such information and makes no guarantee, warranty or representation about such information. The prospective buyer or lessee should independently verify all dimensions, specifications, floor plans, and all information prior to the lease or purchase of the property. All offerings are subject to prior sale, lease, or withdrawal from the market without prior notice.

01 29 26



COMMERCIAL PROPERTIES INC.

Locally Owned. Globally Connected. CORFAC INTERNATIONAL

TEMPE: 2323 W University Drive, Tempe, AZ 85281 | 480.966.2301
SCOTTSDALE: 8767 E Via de Commercio, Suite 101, Scottsdale, AZ 85258 | www.cpiaz.com