

1586 Zephyr Avenue

HAYWARD, CA

±47,520 SF
Available for Lease



Patrick Metzger
RE Lic. #: 01888895
+1 510 285 5362
patrickj.metzger@jll.com

Thomas Mensendiek
RE Lic. #: 02001433
+1 925 944 2163
t.mensendiek@jll.com

Jason Ovadia
RE Lic. #: 01742912
+1 510 285 5360
jason.ovadia@jll.com



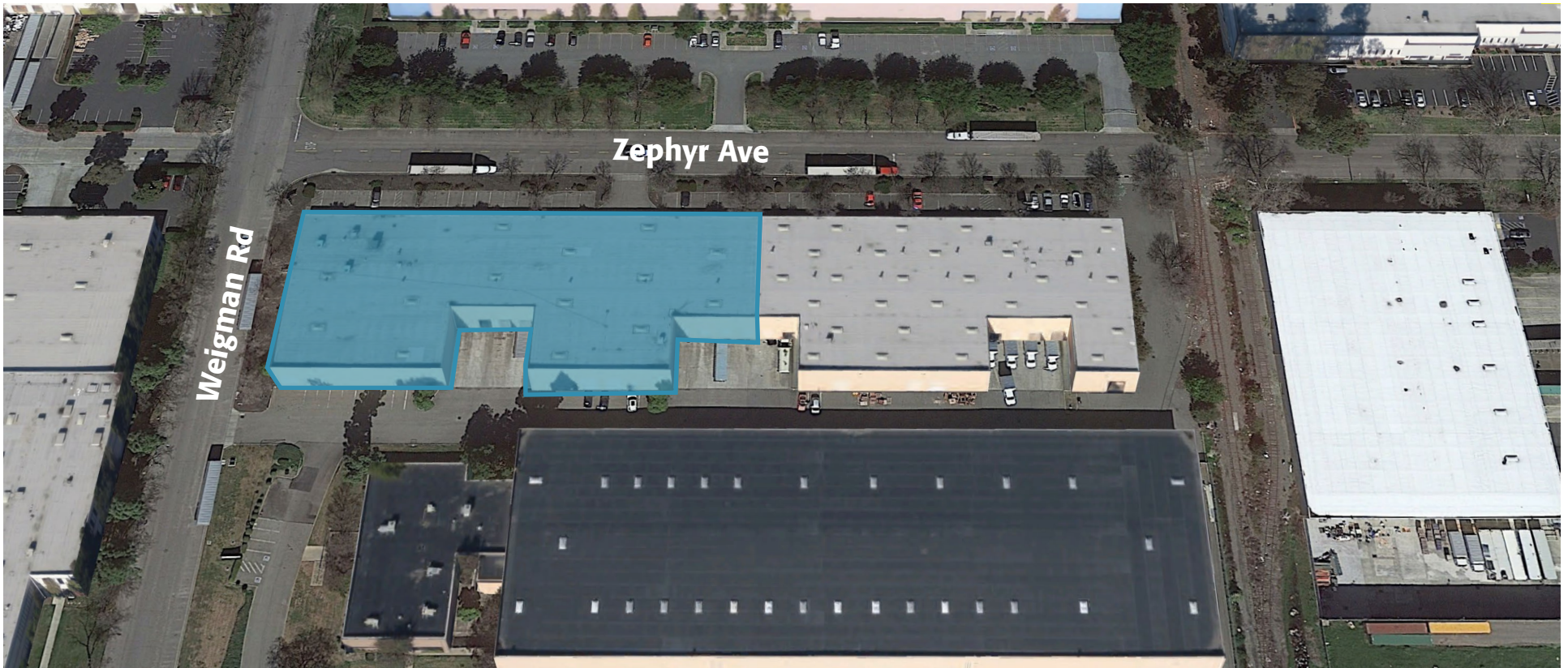
EASTGROUP
PROPERTIES

Jones Lang LaSalle Brokerage, Inc. Real Estate
License #: 01856260

1586 Zephyr Avenue

HAYWARD, CA

±47,520 SF
Available for Lease



Premises features

±47,520 SF total

±8,640 SF of Office Area

1st Floor Office: ±3,840 SF

2nd Story Office: ±4,800 SF

Eight (8) Dock-high doors

Three (3) Grade-level doors

Skylights throughout, LED warehouse lighting

±20' - ±22' minimum Clear Height

Fully sprinklered (.33/3750) Warehouse,
(.19/1500) Mezzanine

±1 mile to I-880 via Whipple Rd

Minimum ±600 Amps @ 277/480 Volt
3 phase power (subject to confirmation)

New interior and exterior paint

±24' - ±60' Column Spacing

Adjacent unit ±15,824 SF Available for a
total of ±63,344 SF



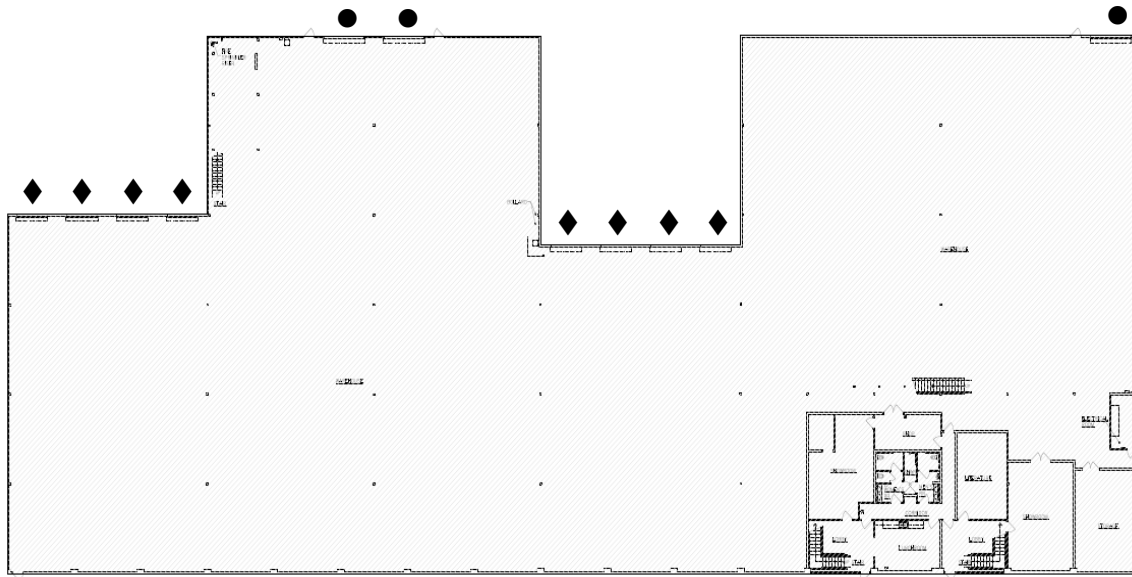
VIRTUAL TOUR

1586 Zephyr Avenue

HAYWARD, CA

±47,520 SF
Available for Lease

Floor Plans



- = Grade Level Loading
- ◆ = Dock High Loading

First Floor
Includes ±3,840 SF Office Space

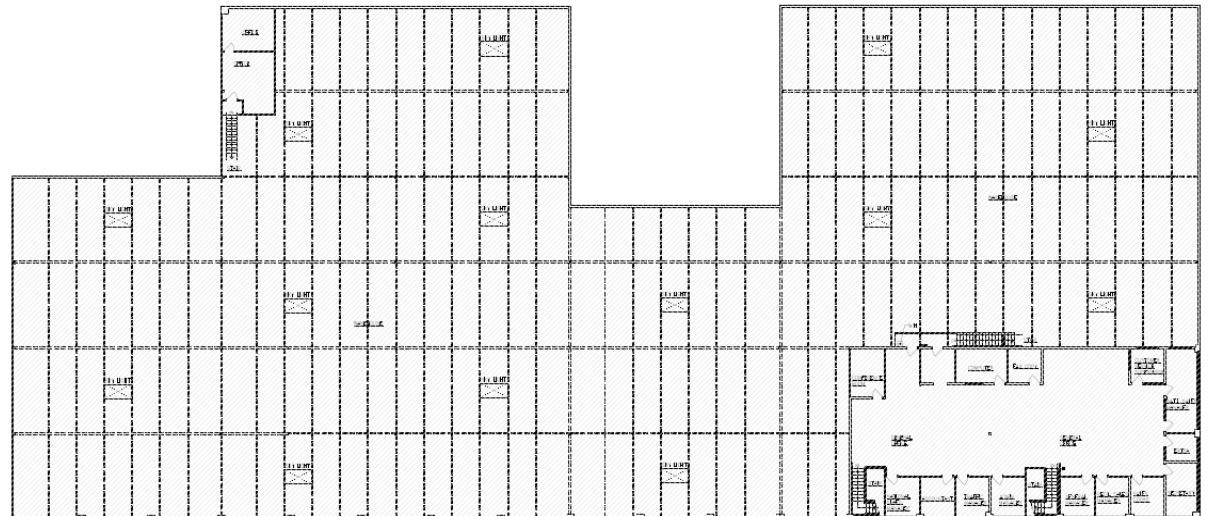


VIRTUAL TOUR

Second Floor
Includes ±4,800 SF Office Space



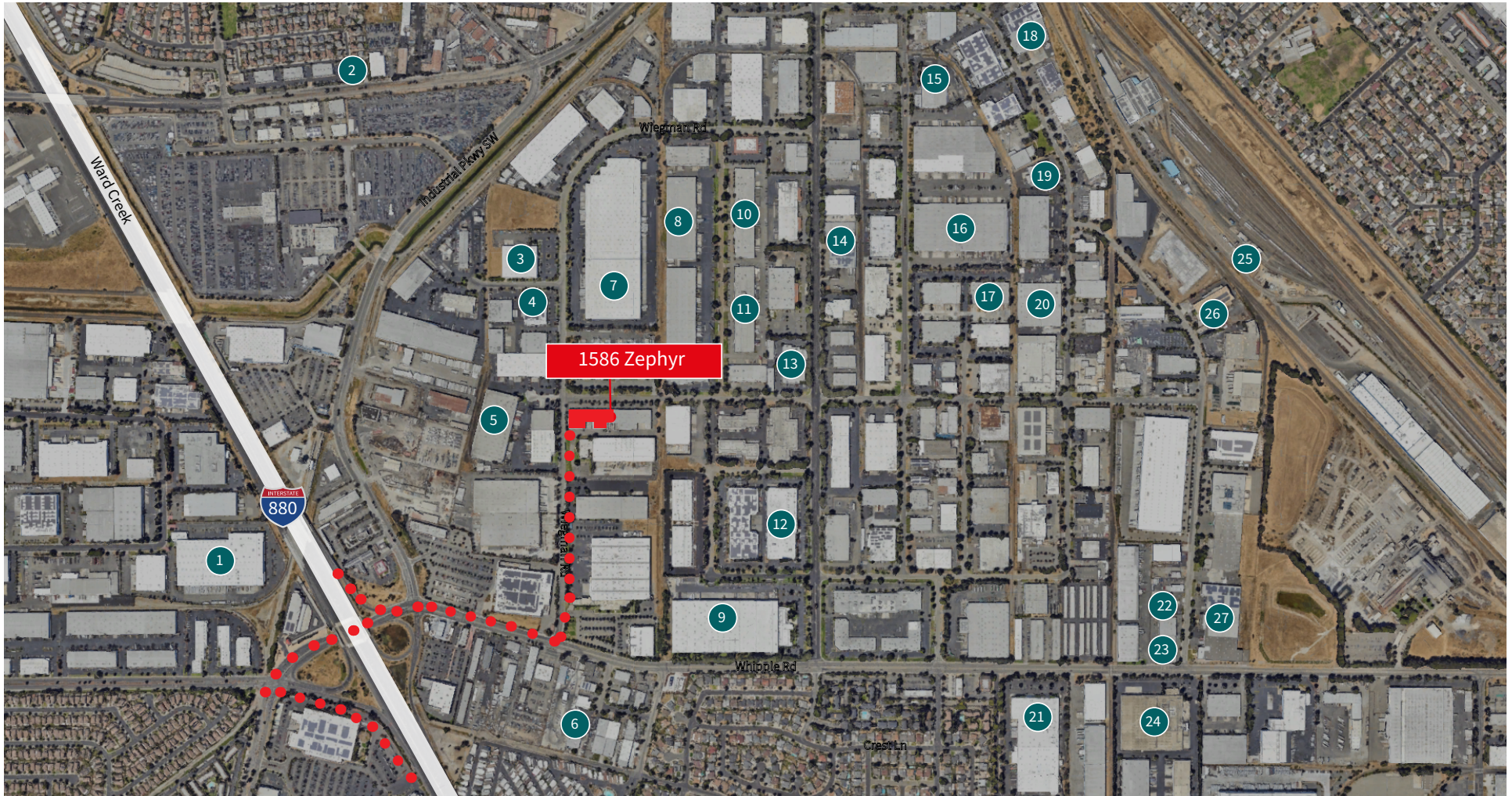
VIRTUAL TOUR



1586 Zephyr Avenue

HAYWARD, CA

±47,520 SF
Available for Lease



- | | | | |
|----------------------------|----------------------------|-------------------------------|-------------------------|
| 1. Forward Air, Inc | 8. Kuehne Nagel | 15. Samuel | 22. Autowise |
| 2. Xcapade | 9. Tesla | 16. J.B. Hunt | 23. RW Garage Doors |
| 3. Gallo Sales Company | 10. Renewal by Andersen | 17. Move-Pros | 24. Rich's |
| 4. Allure Labs | 11. MDC Precision | 18. Yaneng | 25. Hayward Training |
| 5. NorCal Moving & Storage | 12. Chalk | 19. Armenino | 26. Kwan Wo Ironworks |
| 6. Semano | 13. Johnson Computer, Inc. | 20. Standard Event Rentals | 27. IMT Precision, Inc. |
| 7. Keeco | 14. Plant Terra | 21. American Licorice Company | |

1586 Zephyr Avenue

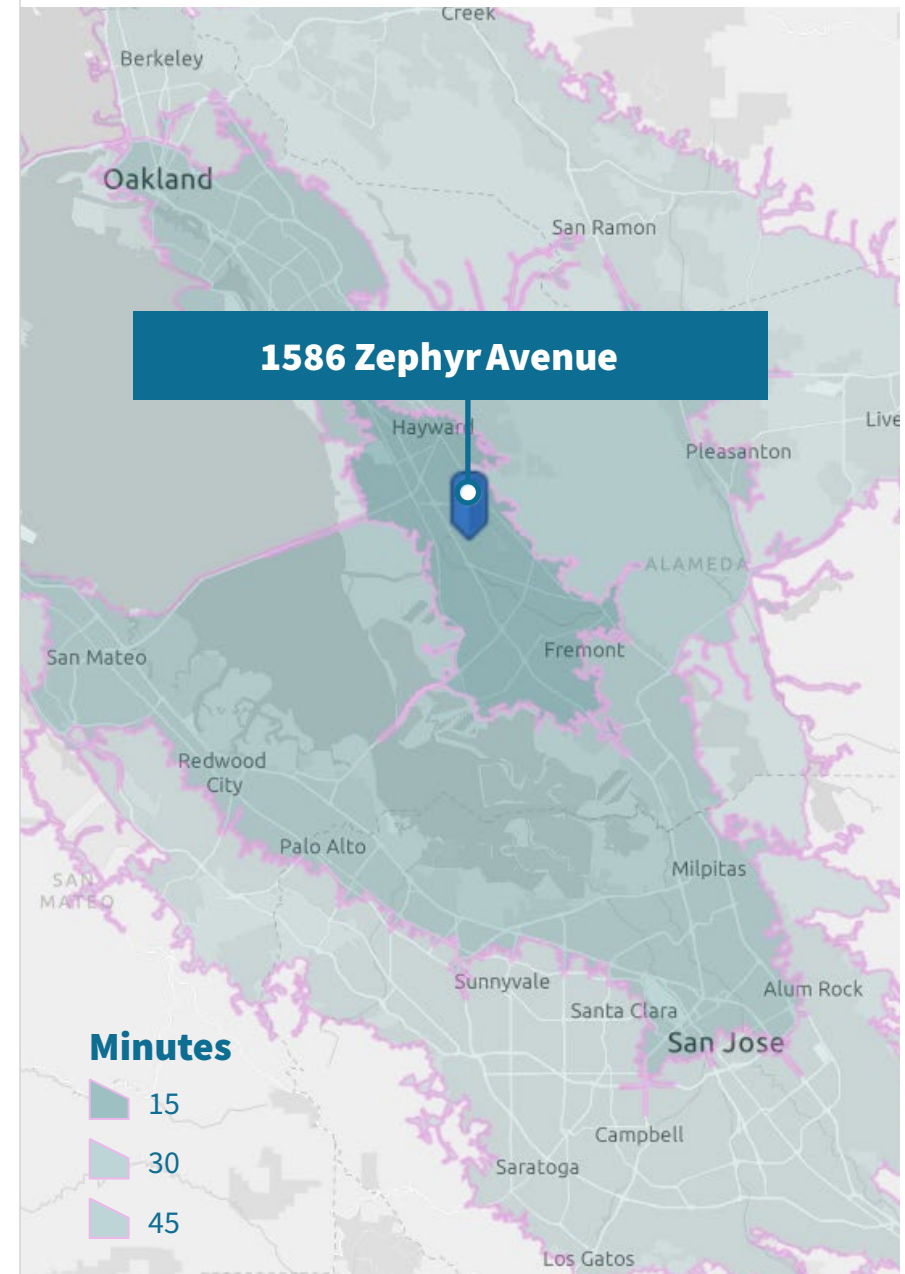
HAYWARD, CA

±47,520 SF
Available for Lease

Demographics

Access to consumers	15 minutes	30 minutes	45 minutes
Total Population	397,930	1,983,498	5,000,685
Total Households	122,523	691,141	1,750,595
Millennial Population (Born 1981 to 1998)	105,093	528,141	1,276,719
Median Home Value	\$868,960	\$997,480	\$1,128,694
Ordered any item online in last 6 months	235,955	1,222,549	3,166,671
Spent \$500+ on Internet orders in last 12 months	133,433	724,160	1,912,579
Median Household Income	\$122,221	\$124,420	\$135,280
Median Disposable Income	\$100,910	\$101,753	\$106,283
Household Income 100K+	75,691	419,855	1,107,560
Manufacturing Employees	15,695	56,669	125,009
Warehousing & Distribution Employees	15,375	60,121	131,030

Source: Esri 2022



1586 Zephyr Avenue

HAYWARD, CA

±47,520 SF
Available for Lease

Strategic location

Port

Port of Redwood City	17.6 miles
Port of Oakland	19.2 miles

Airport

Oakland Airport	13.5 miles
SFO International Airport	24.5 miles
San Jose Airport	21.5 miles

BART

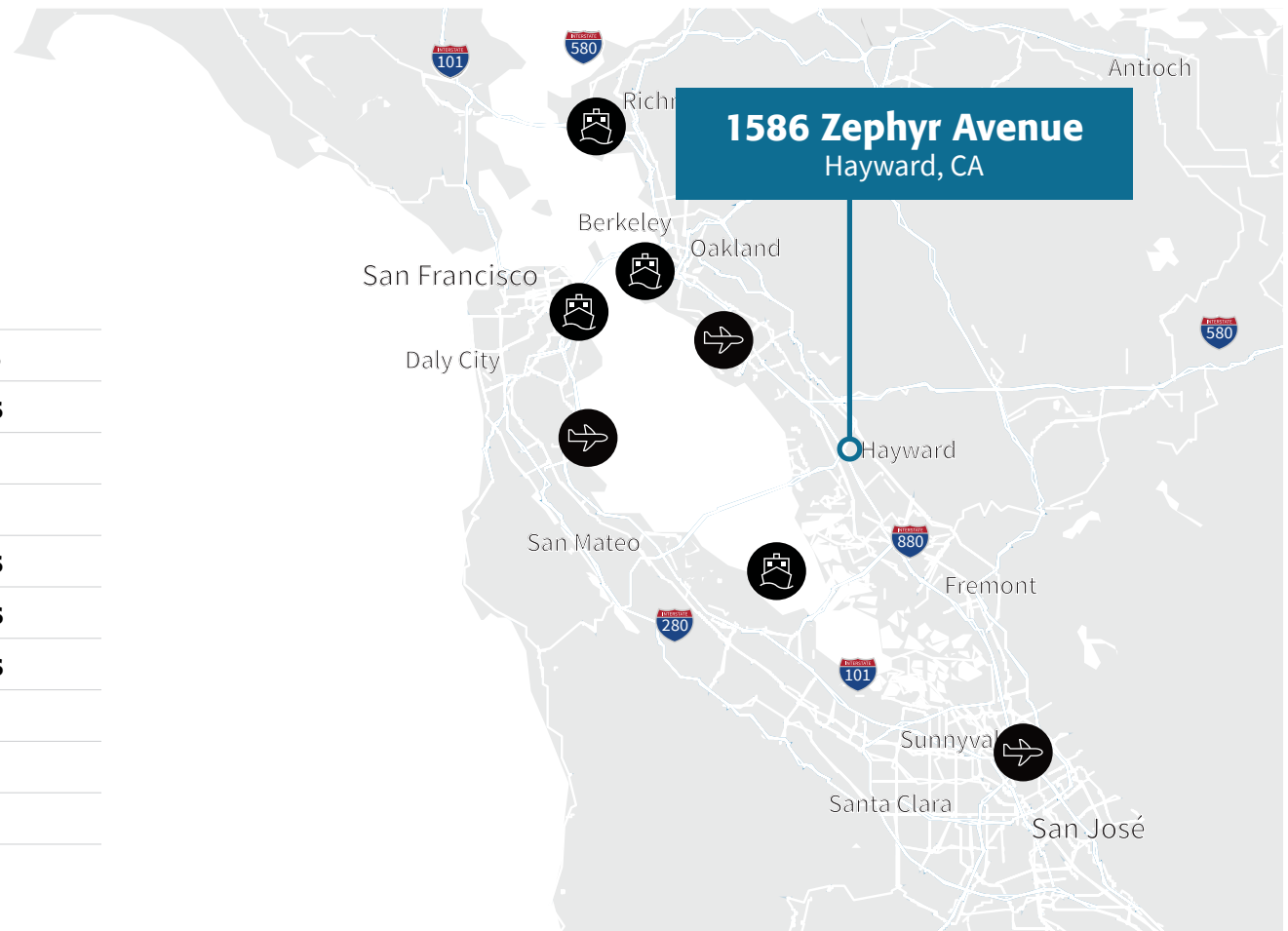
Hayward BART Station	6.7 miles
----------------------	------------------

Contact

Patrick Metzger
RE Lic. #: 01888895
+1 510 285 5362
patrickj.metzger@jll.com

Thomas Mensendiek
RE Lic. #: 0200143
+1 925 944 2163
t.mensendiek@jll.com

Jason Ovadia
RE Lic. #: 01742912
+1 510 285 5360
jason.ovadia@jll.com



Although information has been obtained from sources deemed reliable, neither Owner nor JLL makes any guarantees, warranties or representations, express or implied, as to the completeness or accuracy as to the information contained herein. Any projections, opinions, assumptions or estimates used are for example only. There may be differences between projected and actual results, and those differences may be material. The Property may be withdrawn without notice. Neither Owner nor JLL accepts any liability for any loss or damage suffered by any party resulting from reliance on this information. If the recipient of this information has signed a confidentiality agreement regarding this matter, this information is subject to the terms of that agreement. ©2025. Jones Lang LaSalle Brokerage, Inc. Real Estate Lic# 01856260. All rights reserved.