



## RETAIL INVESTMENT FOR SALE

**5900 E CENTRAL  
WICHITA, KS 67208**





**SALE PRICE: \$751,727**



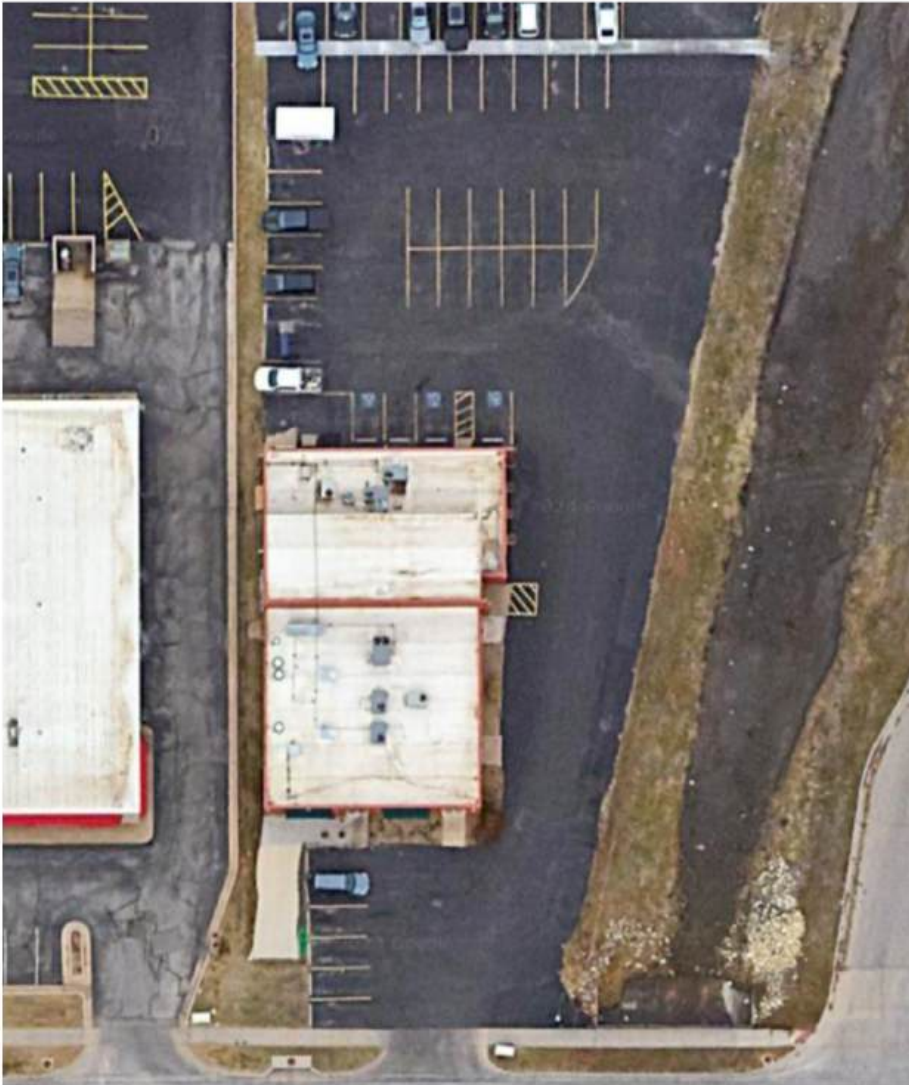
## LISTING DETAILS

- Building SF: 7,945 SF
- Lot Size: 0.72 Acres
- Year Built : 1968
- Zoning: LC
- Parking Stalls: 38

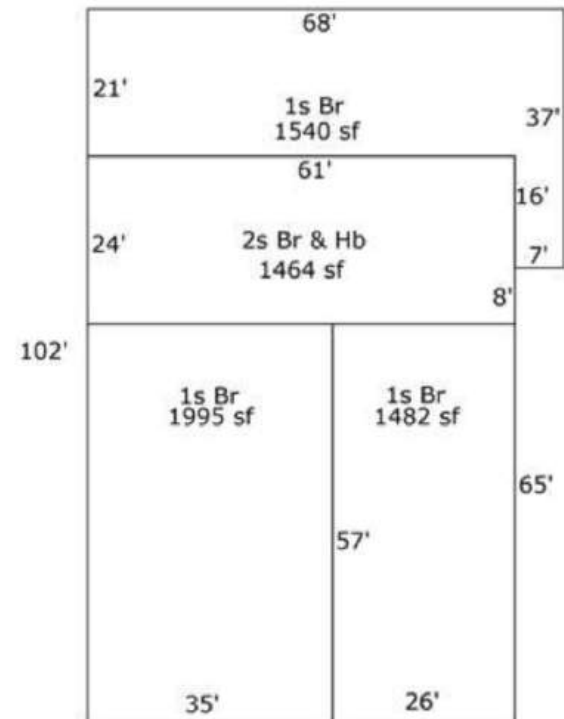
## PROPERTY HIGHLIGHTS

- 3 Tenant Investment property available for purchase
- 100% Occupancy
- Financial reports available with signed NDA

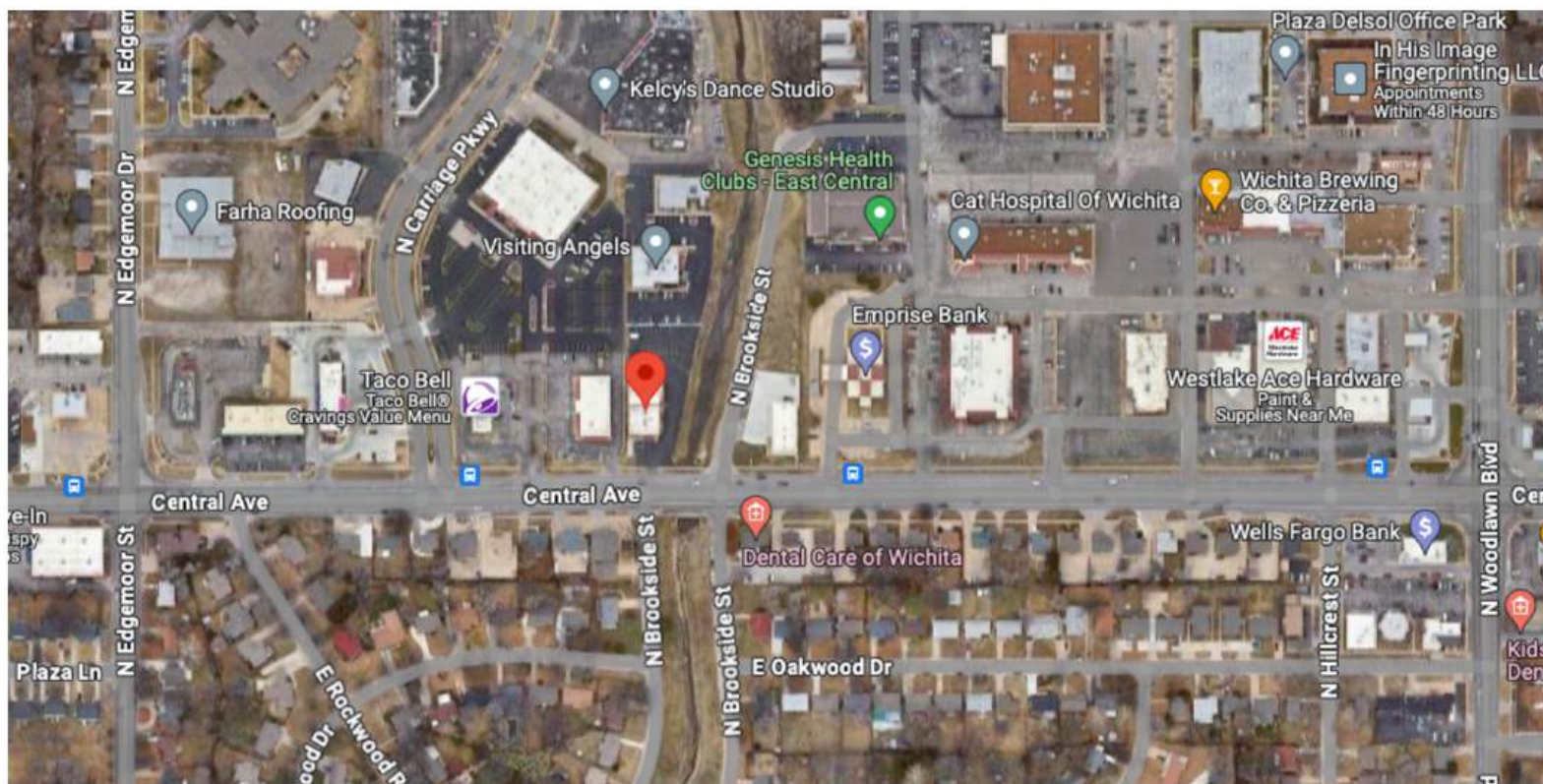




Total 1st Floor: 6481 sf  
Total 2nd Floor: 1464 sf



Central Ave.



## ABOUT THE AREA

- Located in a well established retail corridor in East Wichita, more than 20,000 vehicles pass by this site everyday. Residential and commercial property values in this area have shown continual increases, with this sector of the city seeing plenty of reinvestment.






# HELPING INVESTORS SUCCEED THROUGH REAL ESTATE

**CONTACT BRETT GEHRER TODAY!**



**BRETT GEHRER**


COMMERCIAL AGENT

 (316) 208-6160


 bgehrer@growwithpetra.com

## ABOUT PETRA

**PETRA** is your premiere commercial real estate brokerage. Our foundation is built on the pillars of integrity, transparency, and ethical conduct, which are deeply ingrained in our service ethos. Leveraging our extensive industry experience and a strong network of reliable professionals, we provide bespoke solutions and expert advice tailored to your unique requirements.

 316-243-9929

 [www.growwithpetra.com](http://www.growwithpetra.com)

 251 S. Whittier, Wichita, KS 67207