

N/F ROY & DOROTHY GALATIOTO

RICHARD M. & CECELIA K. ROBERTS

N/F ANSELM M. PAJARI

MERRON ROAD

ROAD

CONN. RTE. 195



LEGEND:
STONEWALL [dashed line symbol]
WIRE FENCE [line with cross-ticks symbol]

GOOSE LANE ROAD

PARCEL "B"
TO BE CONVEYED TO
LOUIS & MINNIE G. ZANGHI
CONTAINS 42.28 ACRES

PARCEL "A"
TO BE CONVEYED TO
BERTHA ZANGHI
CONTAINS 32.98 ACRES

ROSE K. BAKER

N/F ANDREW RIZDON

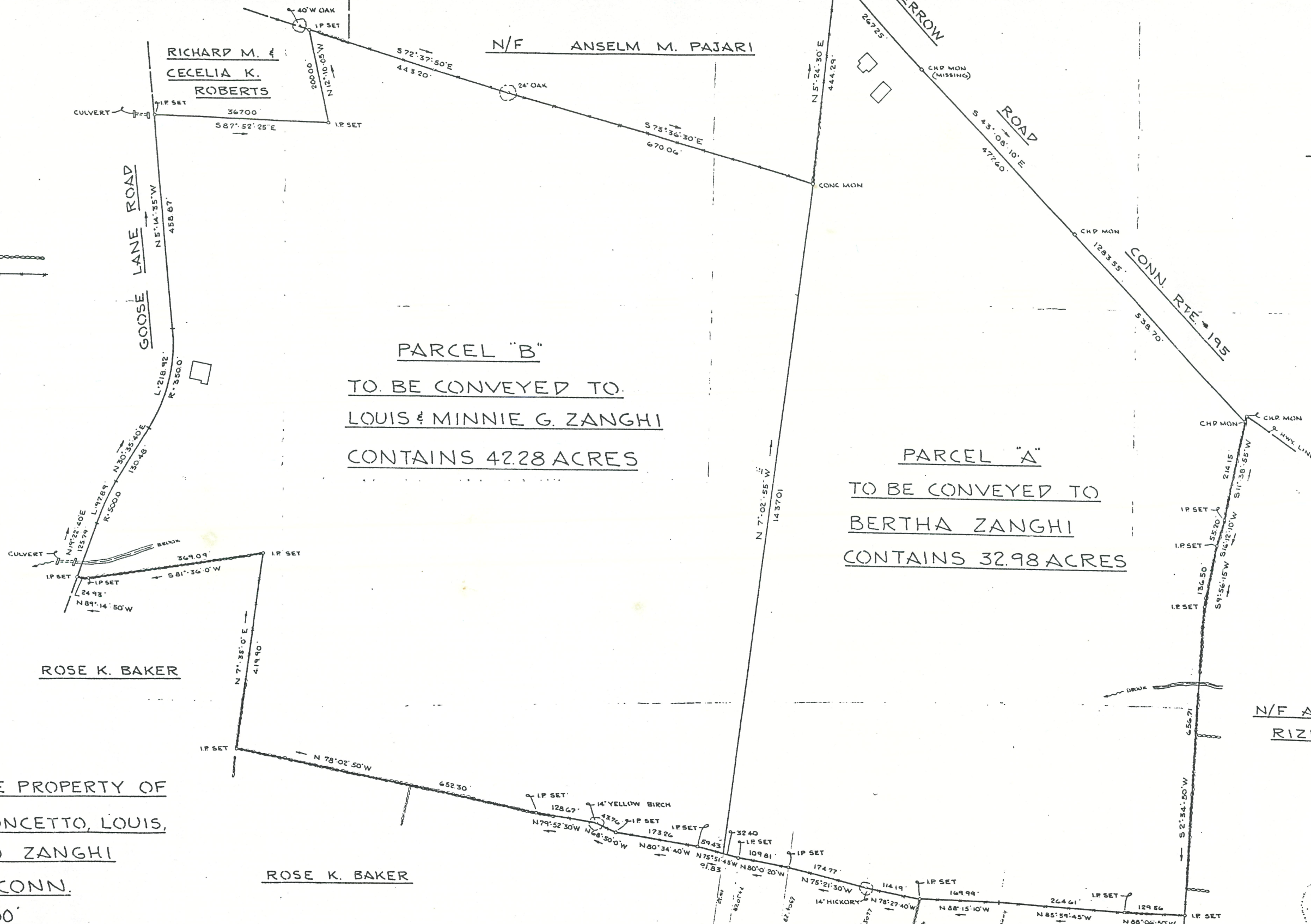
PART OF THE PROPERTY OF
MINNIE, CONCETTO, LOUIS,
& CARMELO ZANGHI
TOLLAND, CONN.
SCALE: 1"=100'
CONTAINS 75.26 ACRES

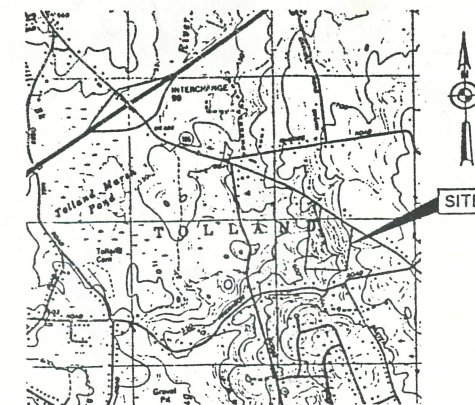
ROSE K. BAKER

WILLIAM E. & ELIZABETH ROBERTS

CERTIFIED SUBSTANTIALLY CORRECT
ACCURACY A-2
Alfred E. Schindler
L.S. 5731
FEB. 4, 1969

ALFRED E. SCHINDLER
LAND SURVEYOR



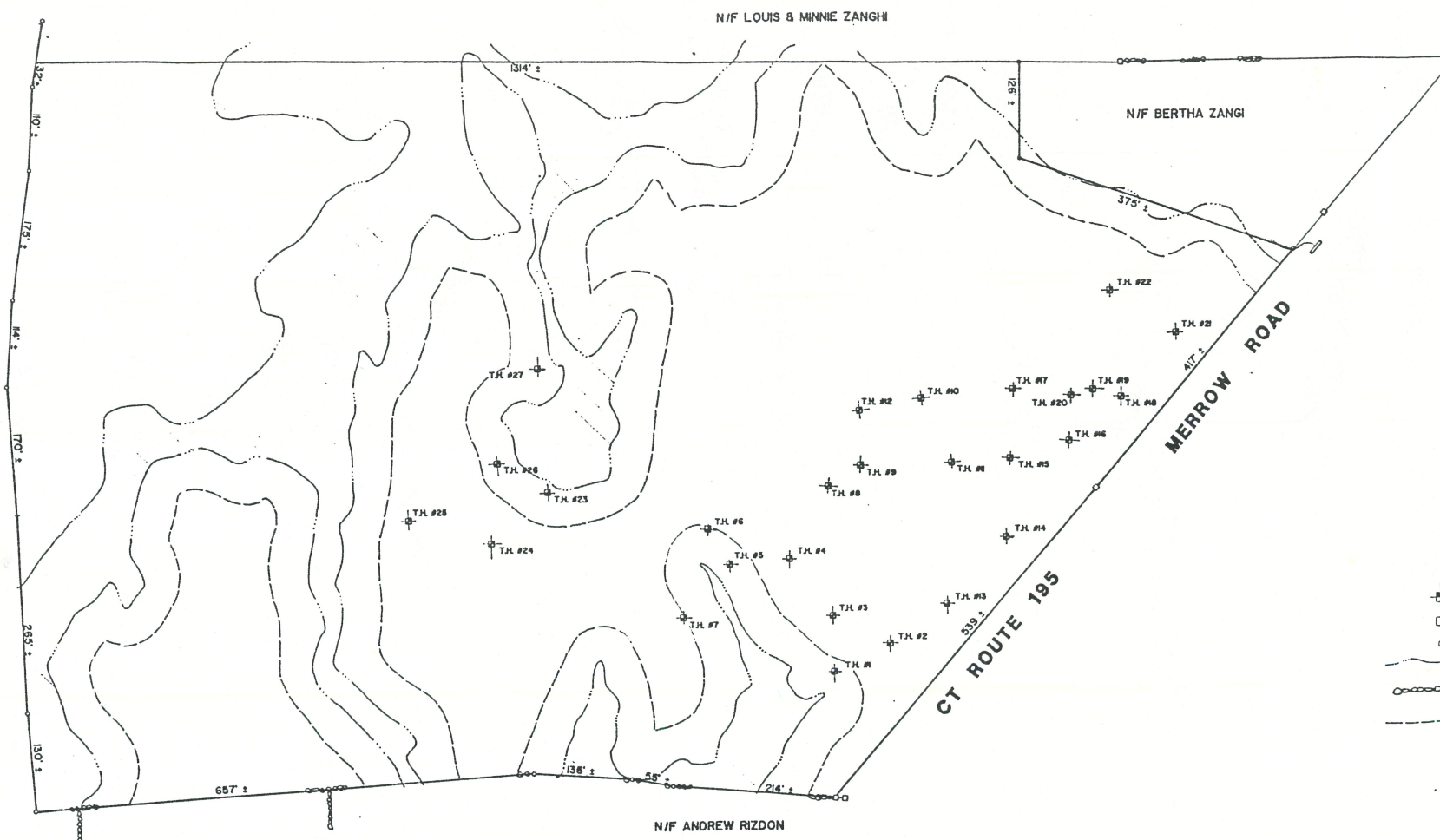


LOCATION MAP

SCALE: 1" = 2000'



N/F
WILLIAM & ELIZABETH
ROBERTS



LEGEND

- DEEP TEST HOLE
- CONC. MONUMENT CALLED FOR
- IRON PIN CALLED FOR
- INLAND WETLAND LIMIT
- STONE WALL
- 50' SETBACK

- ① DEEP TEST HOLES RECORDED BY THE TOWN OF TOLLAND AND LENARD ENGINEERING, INC. JULY 8, 1987
- ② LIMITS OF INLAND WETLANDS FLAGGED IN THE FIELD BY JOHN IANNI, CERTIFIED SOIL SCIENTIST AUGUST 1987.
- ③ THIS MAP IS COMPILED FROM MANY SOURCES INCLUDING USGS TOPOGRAPHY SHEET, TOLLAND ASSESSOR'S MAP, AND PRIVATE SURVEYS AS REFERENCED. TEST PITS AND WETLANDS FLAGS LOCATED USING "CHAIN & COMPASS" WETLAND, AND AS SUCH THEIR LOCATIONS ARE SUBJECT TO CHANGE DUE TO A MORE ACCURATE SURVEY.
- ④ CLEARLY ADDITIONAL WETLANDS WOULD BE ASSOCIATED WITH THE STREAM CORRIDOR. THE EXTENT OF THESE HAS NOT BEEN DETERMINED AND IS THEREFORE NOT SHOWN.

MAP REFERENCES:

- ① "PART OF THE PROPERTY OF MINNIE, CONCETTO, LOUIS & CARMELO ZANGH, TOLLAND, CT." BY ALFRED SCHINDLER, L.S. FEB. 4, 1969 SCALE: 1" = 100' JOB #6812-4.
- ② "MAP OF LOT OF BERTHA ZANGH, TOLLAND, CT." BY ALFRED SCHINDLER, L.S., FEB. 2, 1972 SCALE: 1" = 100' JOB #6812-1A1.

**TEST HOLES AND
WETLAND LOCATION**

PLANS PREPARED FOR
**NARINDER CHADDHA
AND
KULDIP BAJWA**
ROUTE 195
AKA MERROW ROAD
TOLLAND, CONNECTICUT

LENARD ENGINEERING, INC.
Storrs, Connecticut 06268

Job Number: 87-30 Drawn By: J...
Scale: 1" = 100' Checked By:
Date: SEPT 1987 Drawing No.