

PRICE REDUCTION

1414 HYDE STREET | SAN FRANCISCO



KINGDOM HALL
JEROME W. WILSON
1917-1918-1919

JW
ORG

1414



FOR SALE | 3,088 SF BUILDING / FORMER RELIGIOUS FACILITY

Neither the Seller of the Property nor Maven Commercial, Inc., ("Broker") or any of their respective officers, employees or agents, make any representation or warranty, expressed or implied, as to the accuracy or completeness of this confidential information and no legal liability is assumed or shall be implied with respect thereto.

Maven Commercial, Inc., has not made any investigation, and makes no warranty or representation, with respect to the income or expenses for the subject Property, the future projected financial performance of the Property, the size and square footage of the Property and improvements, the presence or absence of contaminating substances, PCB's or asbestos, the compliance with State and/or Federal regulations, the physical condition of the improvements thereon, or the financial condition or business prospects of any tenant, or any tenant's plans or intentions to continue its occupancy of the subject property. Information provided has been or will be gathered from sources that are deemed reliable; however, neither Seller nor the Broker warrants or represents that the information is true or correct.

Recipients are advised to verify information independently and hire all applicable professionals and experts to assess the Property's physical and financial condition. Seller and/or the Brokers reserve(s) the right to change the Property's purchase price, or any information provided, or to withdraw the Property from the market at any time without notice. Recipients agree that the information provided by Seller and/or Broker is confidential and, as such, agrees to hold and treat such information in the strictest of confidence. Visual presentation of parcel lines are not exact.

CONTACT**DOMINIC MORBIDELLI**

dom@mavenproperties.com

415.404.7314

DRE #02024348

SANTINO DEROSE

sd@mavenproperties.com

415.404.7337

DRE #01338326





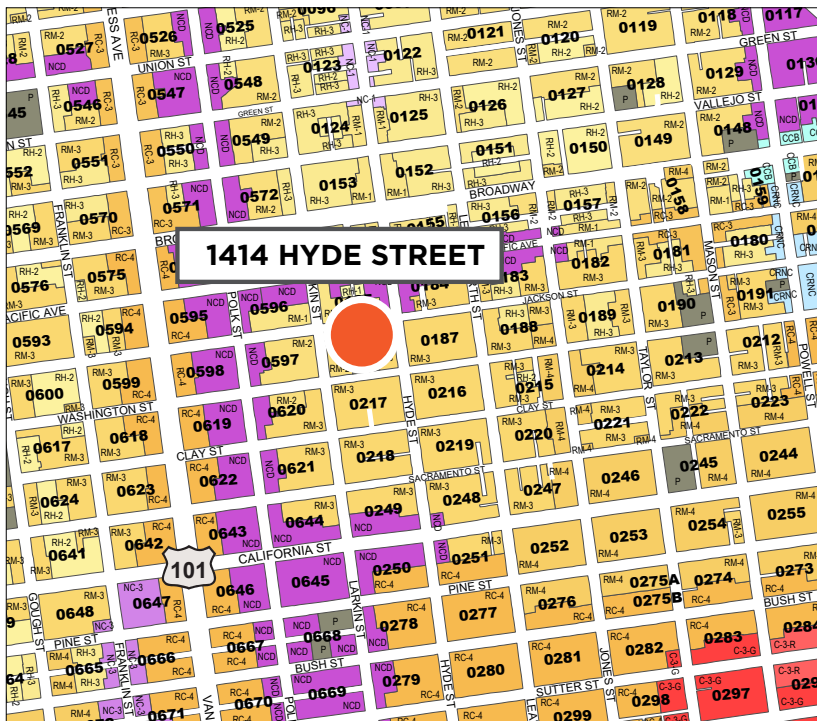
THE OFFERING

ASKING PRICE	\$1,500,000
SQUARE FOOTAGE (PUBLIC RECORD)	3,088 SF
ASKING PRICE/PSF	\$485
LOT SIZE	2,187 SF

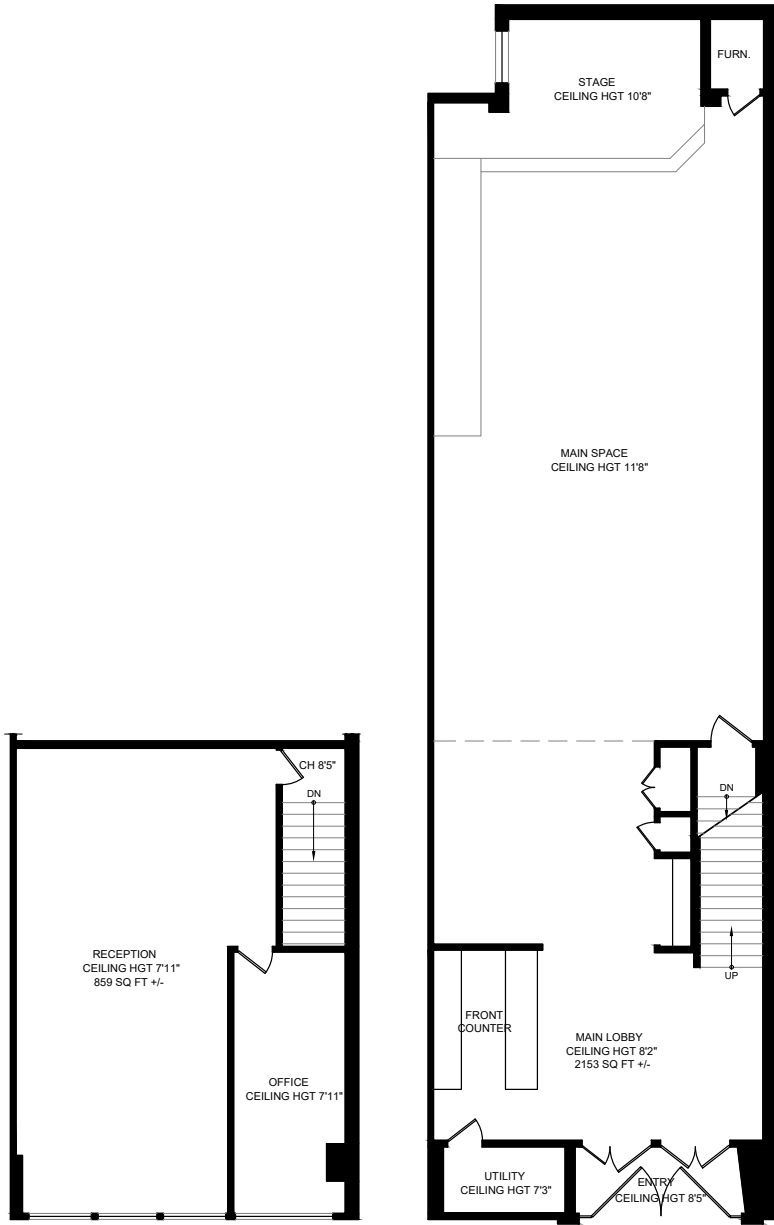
EXECUTIVE SUMMARY

1414 HYDE STREET

ADDRESS	1414 HYDE STREET, SAN FRANCISCO, CA
YEAR BUILT	1912
DISTRICT	Russian Hill
PROPERTY SUBTYPE	Religious, Church, Worship
ZONING	RM-3
APN	0187-017







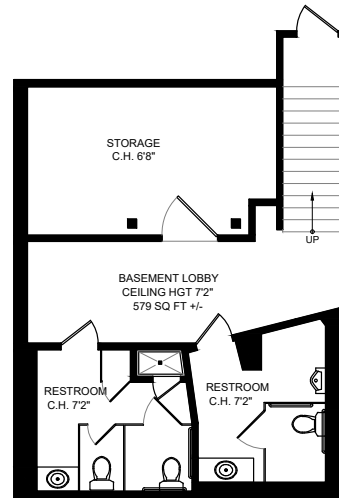
SECOND FLOOR

GROUND FLOOR

HYDE STREET

FEATURES

- 3,088 SF over 2 levels + basement
- Open floorplan
- Sprinklered
- 2 blocks from Polk Street
- Easy access to North Beach, Nob Hill, & Cow Hollow



BASEMENT

NEIGHBORHOOD - RUSSIAN HILL

1414 HYDE STREET

Situated within San Francisco's Russian Hill district, 1414 Hyde Street finds itself minutes from the vibrant Polk Street corridor. This prime location falls within the Upper Polk section of Russian Hill, which has recently welcomed an array of exciting establishments including Bi-Rite, Zero &, Modern Animal, and Nisei. Upper Polk Street boasts a captivating array of boutiques, dining venues, cafes, and fitness concepts, creating an alluring haven for both residents and visitors. The neighborhood exudes an irresistible blend of historical charm and contemporary developments, combining classic San Francisco architectural with modern innovations. A pedestrian-friendly ambiance encourages leisurely strolls, inviting exploration of the distinctive boutiques and eateries. The culinary landscape of the area is a tapestry of diverse flavors, ranging from upscale dining destinations to casual eateries showcasing global cuisine. Access to the area is painless, with public transportation and parking nearby.

WALK SCORE

100

TRANSIT SCORE

85

BIKE SCORE

80





MAISON PACIFIC



BODY ROK



RUSSIAN HILL BOOKSTORE

NEIGHBORS



COLE HARDWARE



SAINT FRANK COFFEE



FIORELLA



SWAN OYSTER



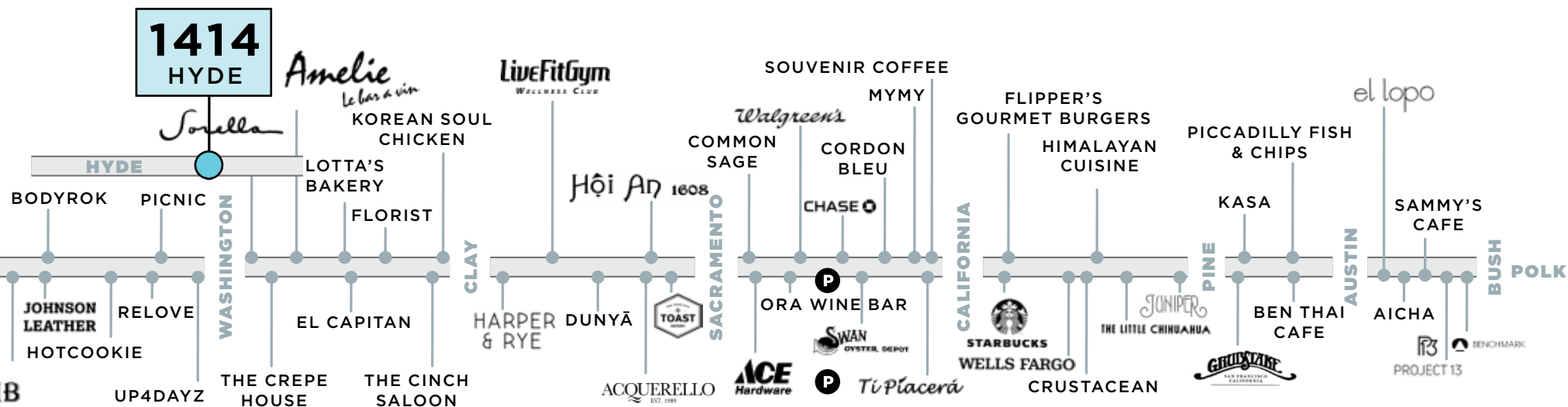
RE



BI-RITE



SORELLA



DEPOT



SARU HANDROLL BAR



BLUE BARN



maven
RETAIL • OFFICE • INDUSTRIAL

CONTACT

DOMINIC MORBIDELLI
dom@mavenproperties.com
415.404.7314
DRE #02024348

SANTINO DEROSE
sd@mavenproperties.com
415.404.7337
DRE #01338326

NOTICE: This information has been secured from sources we believe to be reliable but we make no representations, warranties, express or implied, as to the accuracy of the information. Listing broker has been given enough information to provide only a preliminary interest in the property. The materials are not to be considered fact. The information contained herein is not a substitute for thorough due diligence investigation. References to square footage, zoning, use, or age are approximate. Please contact the San Francisco Planning Department to verify zoning at (415) 558-6378, as neither broker or landlord represent that this space is suitable for your use. Tenant or Buyer must verify the information at their own expense and bears all the risk for any inaccuracies. By receiving these materials you are agreeing to the disclaimers set forth herein. DRE#01878802

466 Green Street Suite 203
San Francisco, CA 94133
415-781-770
www.mavenproperties.com
