

22601 DAVIS DRIVE, SUITE 200,  
STERLING, VA

# Sterling Sublease Available Immediately

RATE

**\$15.00** PSF FS

TERM



Through July 2027

## Suite Highlights



6,000 SF  
Available



Second floor  
office space



Sixteen  
workstations



Six offices

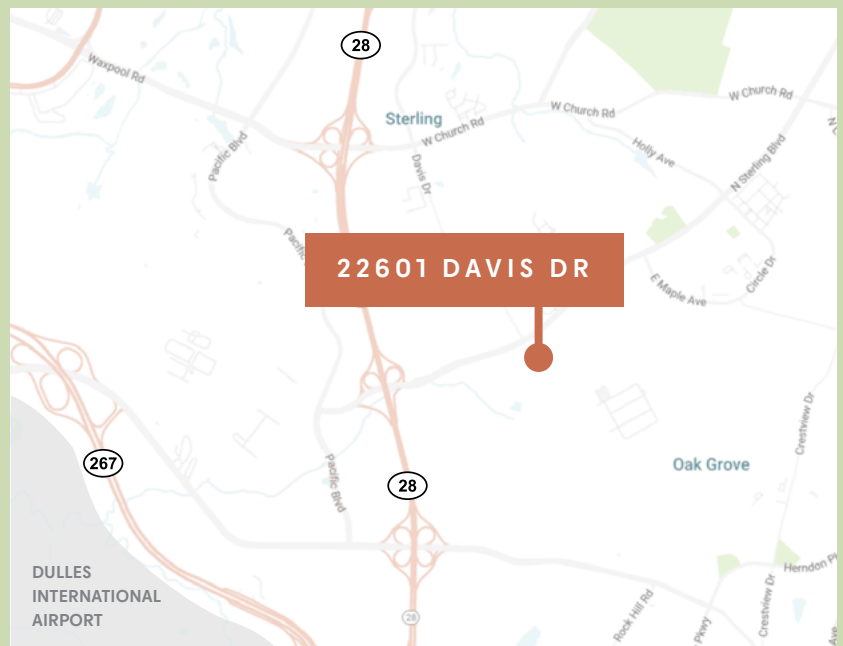


Conference  
room



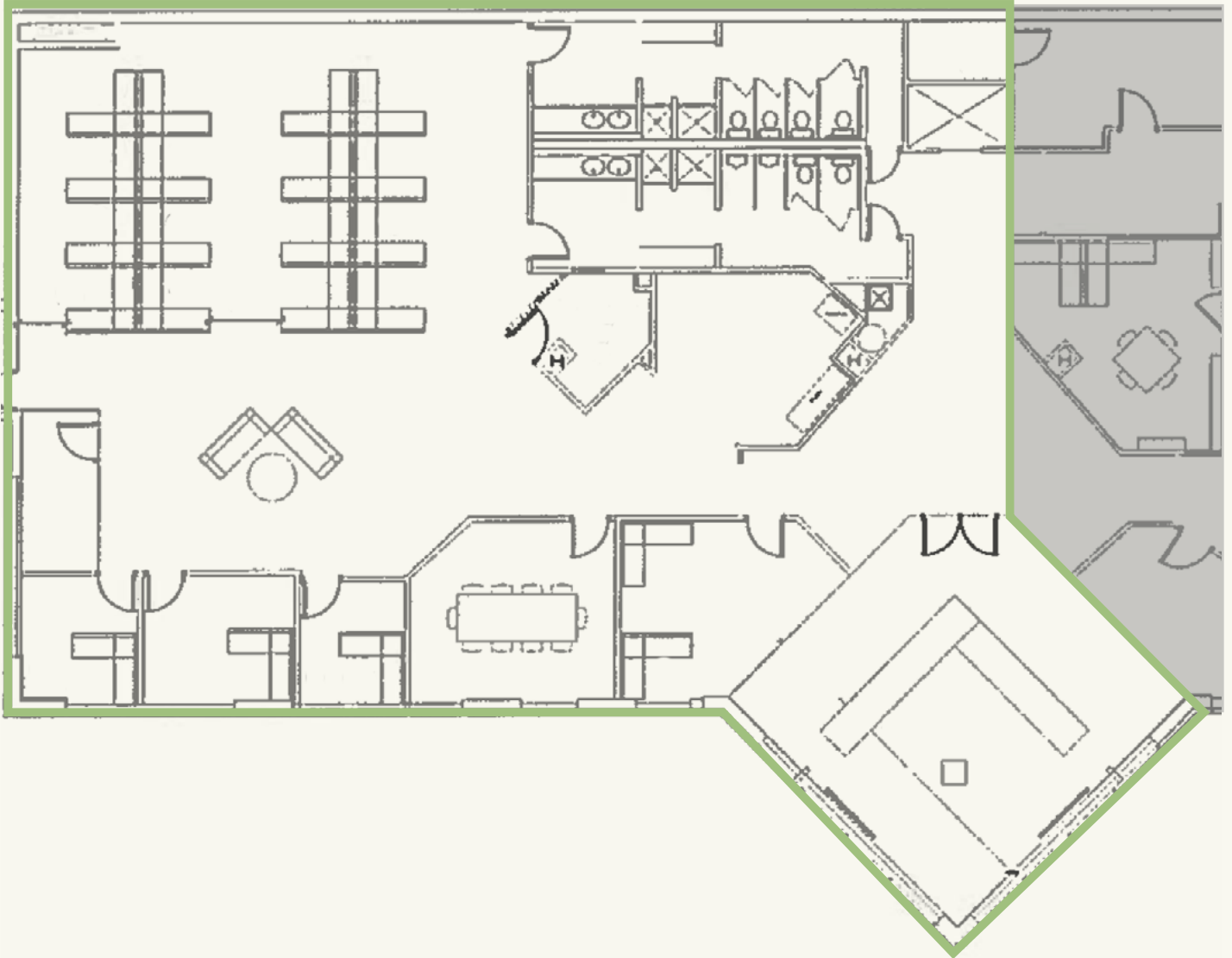
Kitchen

TRANSWESTERN



22601 DAVIS DRIVE, SUITE 200, STERLING, VA

## Floorplan



FOR LEASING INFORMATION:

**Bev Sheffler**

[bev.sheffler@transwestern.com](mailto:bev.sheffler@transwestern.com)

703.749.9453

**T TRANSWESTERN**

8444 Westpark Drive Suite 850

McLean, VA 22102