

12821 S SPRING ST

FOR LEASE

*A 18,134 SF warehouse on 30,087 SF of land available
For Lease in September of 2025*

12821 S SPRING ST, LOS ANGELES, CA 90061

\$1.34
PRICE PSF NET

3-7 YR
TERM LENGTH

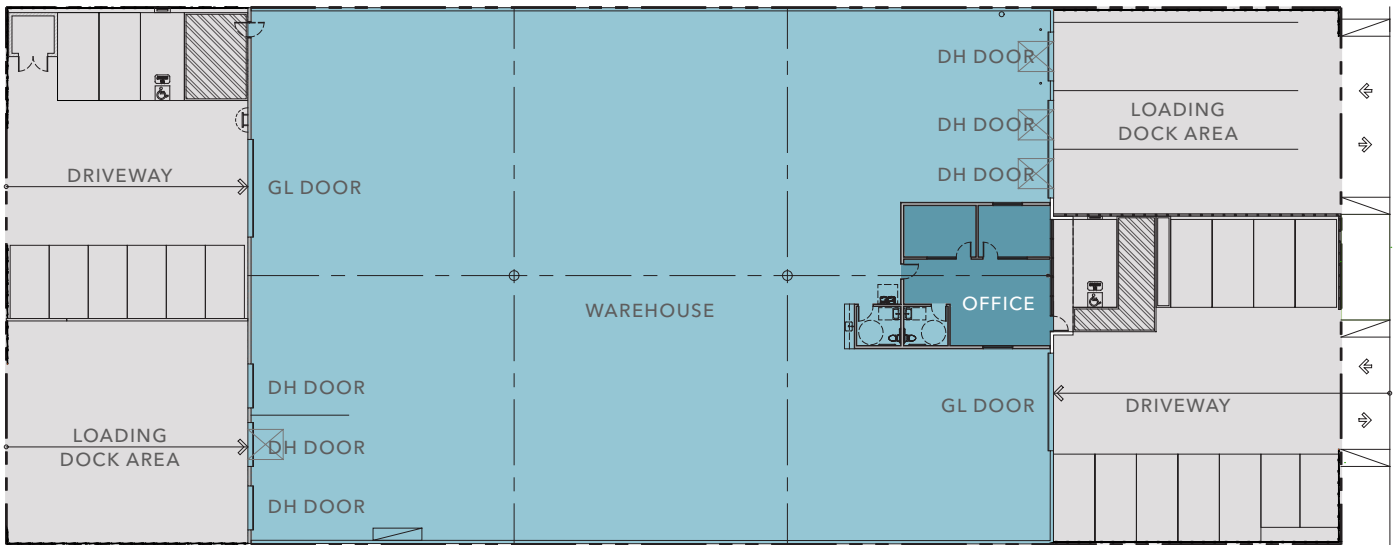
Rare opportunity to lease a completely rebuilt free standing CTU building in the heart of Unincorporated LA.

PROPERTY INFORMATION

ADDRESS	12821 S Spring St Los Angeles, CA 90061
BUILDING SIZE	18,134 SF
OFFICE SPACE	2,000 SF
LAND SIZE	30,087 SF
LEASE RATE	\$1.34 PSF NNN
EST. OPEX	\$0.21 PSF
CEILING HEIGHT	21'-30'
ZONING	LCM1
SPRINKLERS	ESFR
POWER	600A/480-277V/3P/4W
DH DOORS	6 (4 full pit levelers/2 edge levelers)
GL DOORS	2 (oversized 20 x 15)
PARKING	21 Spaces



SITE PLAN



18,134 SF

AVAILABLE SPACE

2,000 SF

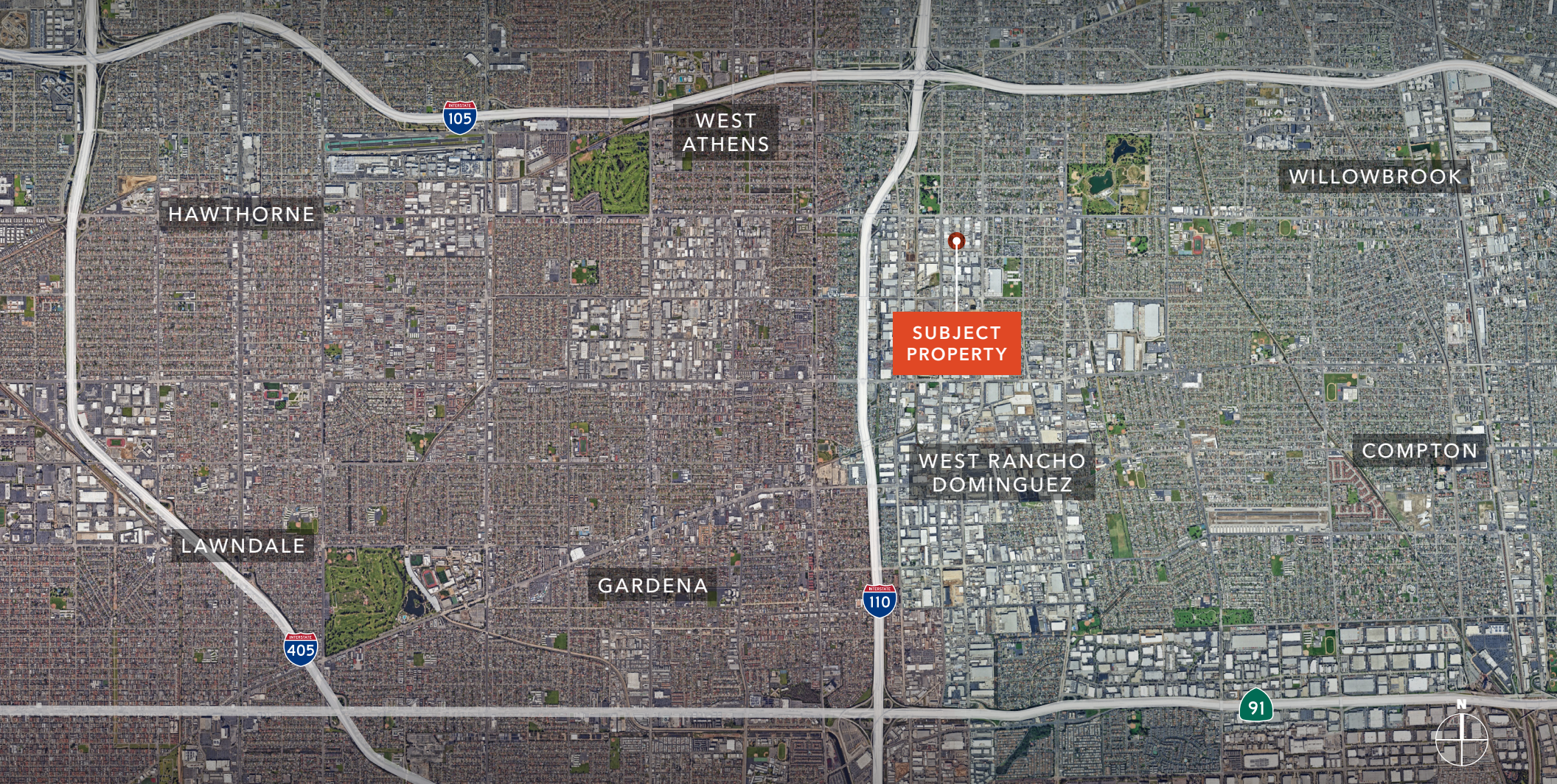
OFFICE SPACE

30,087 SF

LAND SIZE

LEGEND

- Office
- Warehouse
- Property



Exclusively listed by

IAN STEVENSON

Vice President

310.906.3277

ian.stevenson@kidder.com

LIC N° 02045140

KIDDER.COM

This information supplied herein is from sources we deem reliable. It is provided without any representation, warranty, or guarantee, expressed or implied as to its accuracy. Prospective Buyer or Tenant should conduct an independent investigation and verification of all matters deemed to be material, including, but not limited to, statements of income and expenses. Consult your attorney, accountant, or other professional advisor. All Kidder Mathews designs are the sole property of Kidder Mathews. Branded materials and layouts are not authorized for use by any other firm or person.

