

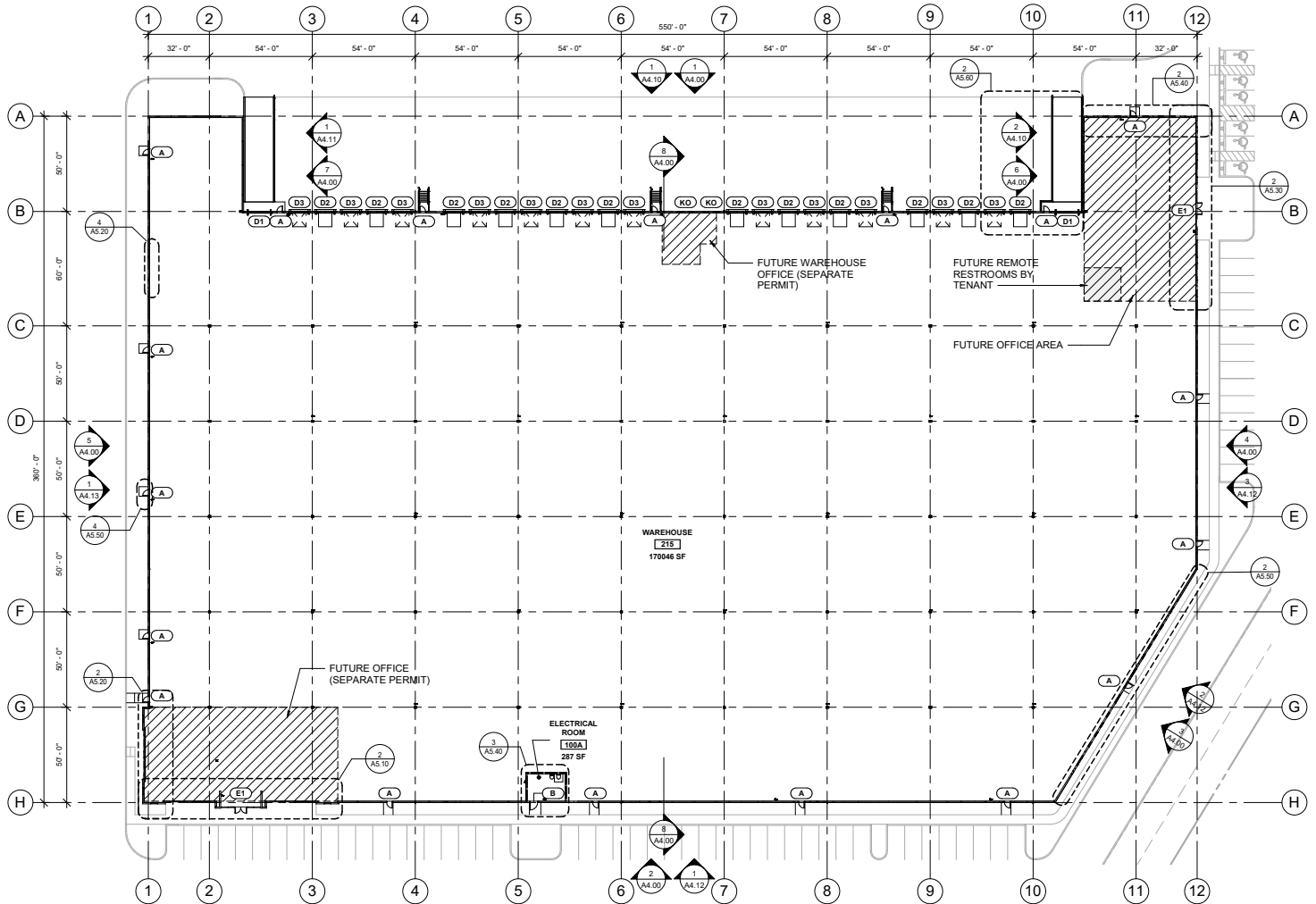


PROPERTY DESCRIPTION

- 8,095 SF +/- Office (1st & 2nd Floor)
- 76.92 Acre +/- Site
- 36' Clear Height
- Single Loaded
- Standard Bay: 54' wide x 50' deep
- Speed Bay: 54' wide x 60' deep
- 150 Auto Parking & 35 Trailer Parking
- 2 Drive In Doors
- 24 Manually Operated Vertical Lift doors (9 x 10) with 3 Tracks, Vision Lites, and 50,000 Cycle Springs
- 12 Mechanical Dock Levelers (7' x 8') with 40,000# Capacity, Dock Bumpers, Standard Dock Seal, and Z-Guards



FLOOR PLAN



Another Quality Development by:



Zoning - NEB North End Business:

Permitted Uses Include*

- Processing
- Research & Development
- Packaging
- Distribution Centers
- Manufacturing
- Warehouses

Join current **CARSON33** tenants:



*<https://ecode360.com/29829374?highlight=north%20end&searchId=31095167489438319#29829374>



Brian Knowles, CCIM, SIOR
bknowles@lee-associates.com
610.400.0484

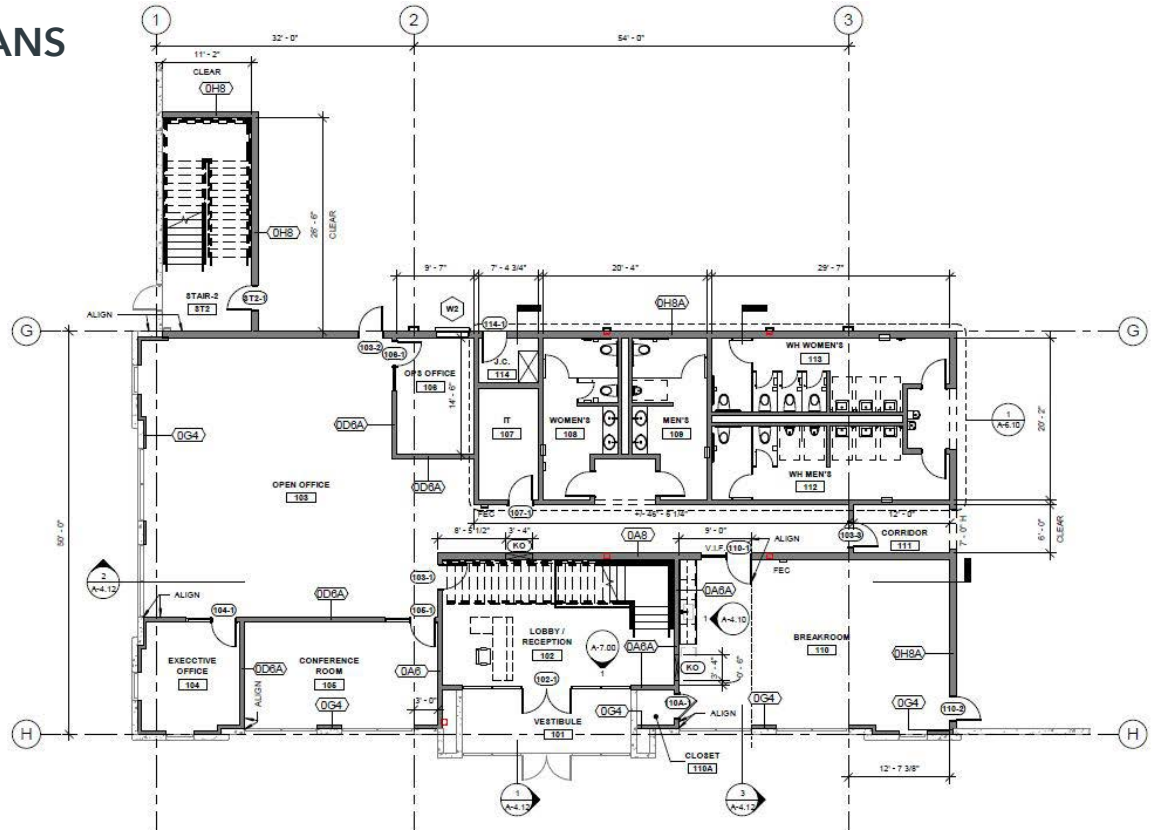
Matt D'Alesio
mdalesio@lee-associates.com
610.947.1951

OFFICE FLOOR PLANS

MAIN FLOOR

1st Floor

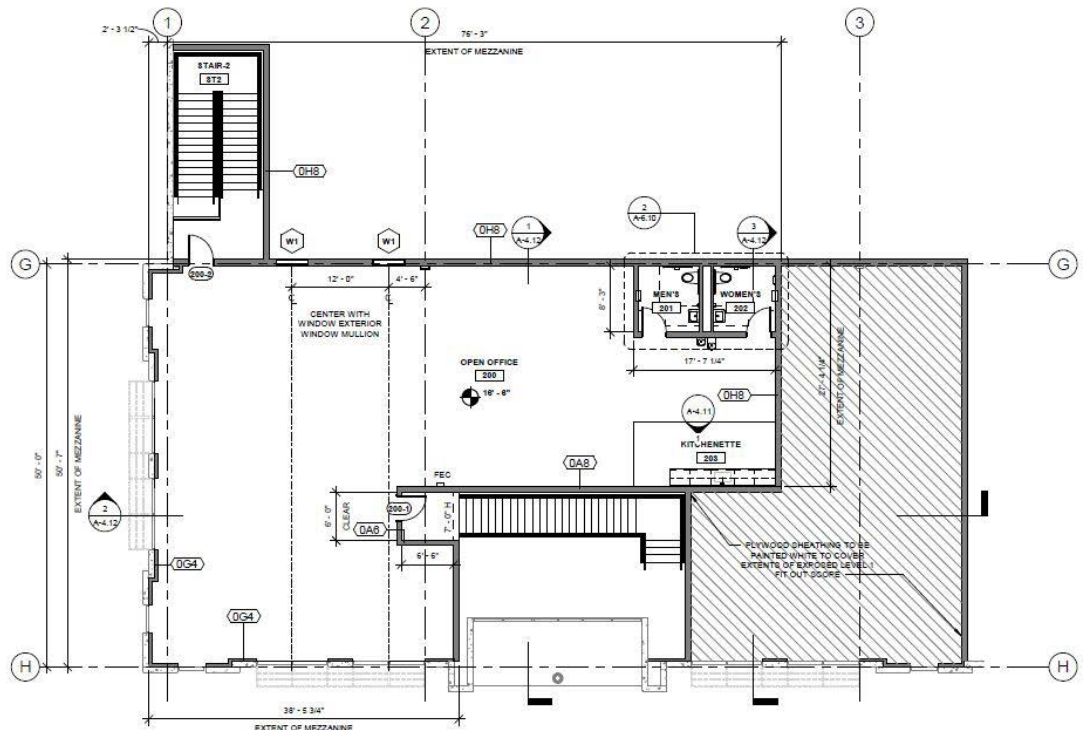
5,100 SF +/-



MEZZANINE

2nd Floor

2,995 SF +/-



BUILDING J

1575 VAN BUREN ROAD
PALMER TOWNSHIP, PA



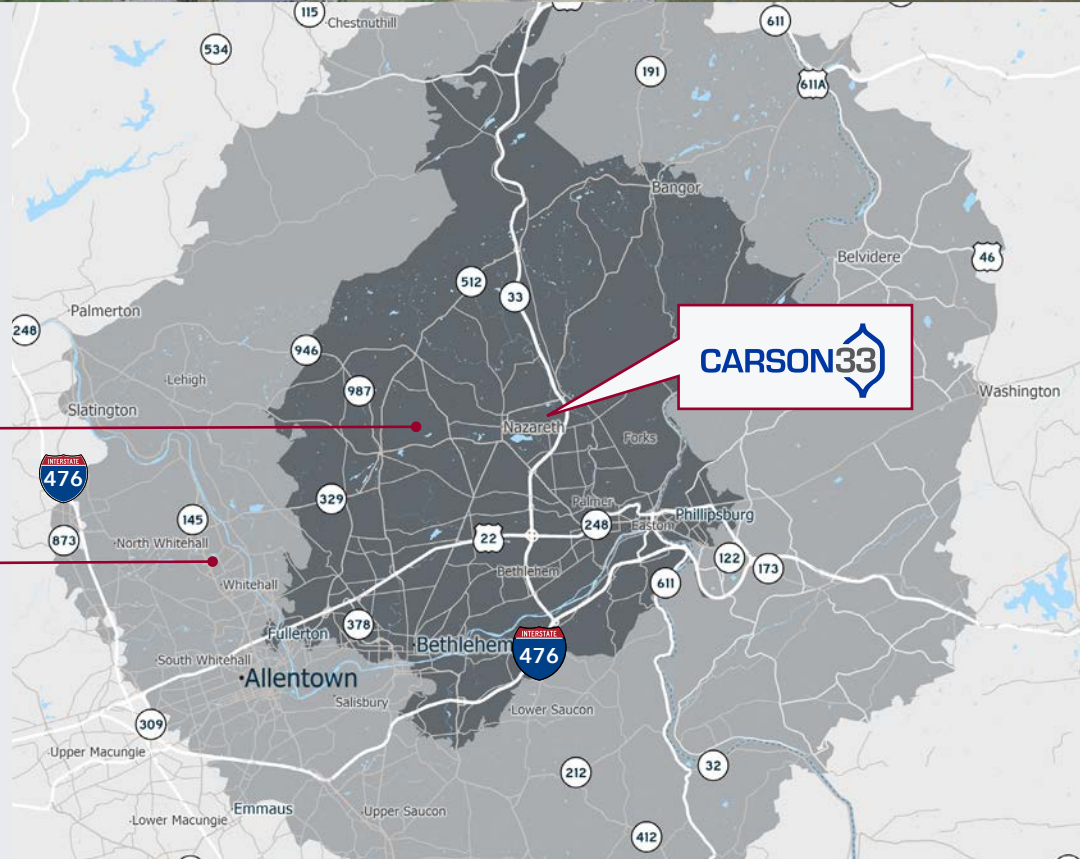
Superior Access and Labor Availability

20 Minutes

Population: 280,164
Workforce (18+): 223,848

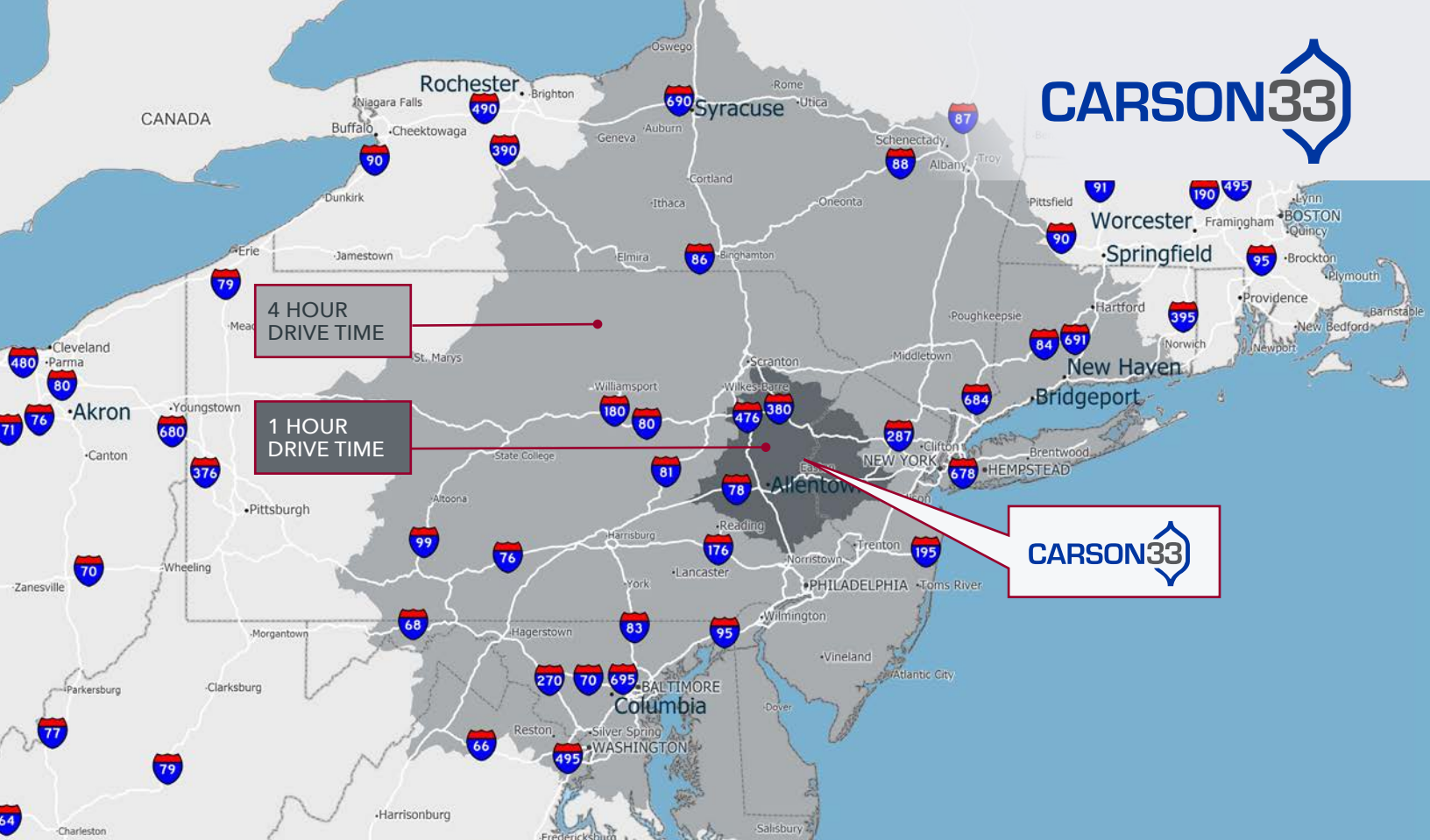
20 Miles

Population: 657,187
Workforce (18+): 520,362



Brian Knowles, CCIM, SIOR
bknowles@lee-associates.com
610.400.0484

Matt D'Alesio
mdalesio@lee-associates.com
610.947.1951



Market Access and Infrastructure

		MILES	MINUTES
SAME DAY DELIVERY 	Harrisburg, PA	104	97
	Philadelphia, PA	97	77
	Washington, DC	219	202
	New York, NY	102	85
PORTS 	Port of Philadelphia	106	82
	Port of Wilmington	111	94
	Port of Newark	73	75
AIRPORTS 	Lehigh Valley International	18	13
	Philadelphia International	95	85
	Newark Liberty Intl.	70	73
PARCEL FACILITIES 	FedEx Shipment Center, Bethlehem, PA	17	8
	FedEx Ground (MegaHub), Northampton, PA	23	15
	UPS Easton, PA	1	1
INTERMODAL YARDS 	Norfolk Southern Intermodal Yard, Bethlehem, PA	18	14
	Norfolk Southern, Harrisburg, PA	102	103
	Norfolk Southern Taylor, PA Intermodal	65	65

For Further Information:

Brian Knowles, CCIM, SIOR
 bknowles@lee-associates.com
 610.400.0484

Matt D'Alesio
 mdalesio@lee-associates.com
 610.947.1951



Lee & Associates of Eastern Pennsylvania LLC
 220 W. Germantown Pike, Suite 200
 Plymouth Meeting, PA 19462

610.400.0499 | lee-associates.com/easternpa

All information furnished regarding property for sale, rental or financing is from sources deemed reliable, but no warranty or representation is made to the accuracy thereof and same is submitted subject to errors, omissions, change of price, rental or other conditions prior to sale, lease or financing or withdrawal without notice. No liability of any kind is to be imposed on the broker herein.