

# CORDER

AND ASSOCIATES, LLC



## *The Hub On Main Street*

127 Main St., Chester, MT 59522

*Offered at \$250,000*



*Presented Exclusively by*  
**Kaitlyn Lyders, REALTOR®**

406-622-3224 office  
406-570-3256 cell  
[Kaitlyn@CorderLand.com](mailto:Kaitlyn@CorderLand.com)



## *Property Information*

**Lot Size:** 0.161 deeded acres

**Taxes:** \$1,137.37 (2024)

**Legal:** CHESTER ORIGINAL TOWNSITE, S21, T32 N, R06 E,  
BLOCK 006, LT 4 AND N 20 FT OF LOT 5

**Year Built:** 1956

**Bed/Bath:** 2 Bed/2 Bath

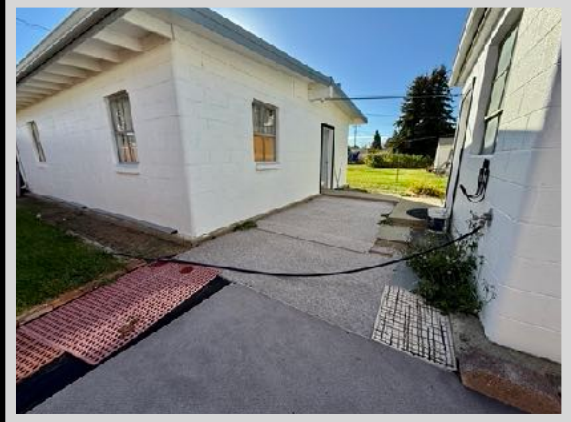
**Square Footage:** 1,992

**HVAC:** Gas forced air; Central air conditioning

**Water/Sewer:** City

**Appliances/Personal Property Included:** Range

**Garage:** Detached 2 car



## *Executive Summary*

Welcome to this beautifully updated 2-bed, 2-bath home right on Main Street in Chester, Montana! With its bright open floor plan and modern LVT flooring, the space feels fresh, inviting, and easy to love. The primary suite is a true retreat, featuring a relaxing jetted tub, while the second bedroom and full bath offer great flexibility. Enjoy a detached two-stall garage for all your gear and vehicles and a cozy patio ideal for grilling or taking in those famous big-sky sunsets. This property also carries appealing commercial potential, offering an opportunity for a home-based business, rental investment, or a commercial conversion thanks to its adaptable layout and convenient in-town location. Located just minutes from Tiber Reservoir (Lake Elwell), you'll have quick access to boating, fishing, and wide-open recreation. The surrounding ag community brings a sense of pride, tradition, and steady economic activity—ideal for anyone looking to put down roots in a supportive and vibrant rural town!



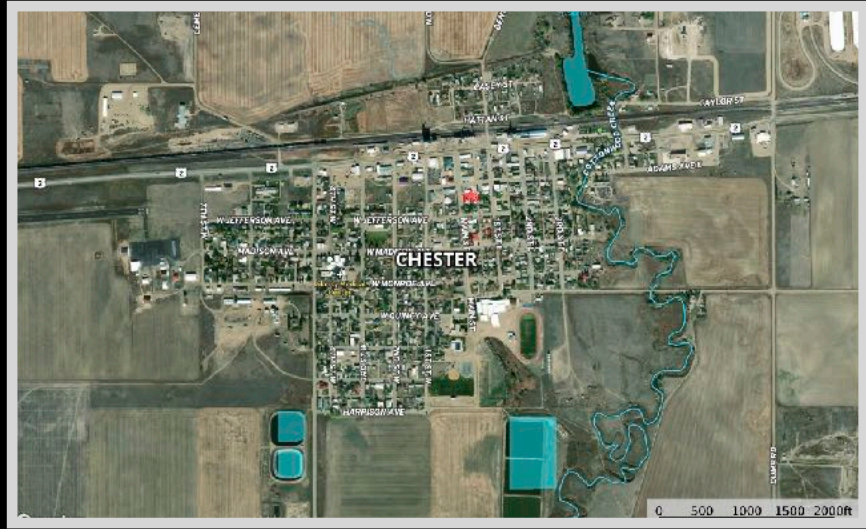
Take the  
virtual  
home tour!





## *Local Area*

*Amid the wheat fields and the rolling plains is the small community of Chester, Montana. This north-central town lies halfway between Havre and Shelby on Highway 2 with the picturesque Sweet Grass Hills as a backdrop. In 1910 the town was incorporated after being named for the first telegraph operator's hometown in Pennsylvania. The small close-knit community is mostly comprised of farmers and ranchers as the area is a fertile part of the Golden Triangle. Learn more about the homesteaders at the Liberty County Museum and Liberty Village Arts Center & Gallery.*



## *Area Attractions*

### **Tiber Dam-Lake Elwell**

*Hidden away like a prize just east of Shelby, Montana lies a versatile recreational area that provides a place to make golden memories and enjoy Montana scenery and leisure. Tiber Dam-Lake Elwell boasts year-round angling for Walleye, Northern and Sauger Pike, native Trout, Ling, Perch, and others. Try out bow fishing for carp that frequently exceed 20 pounds! Along with many campgrounds and picnicking areas, there are over 178 miles of shoreline to appease swimmers and boaters alike. Five well-maintained boat ramps make it convenient and easy to get your boat in the water. Take in the spectacular windblown sandstone formations and one of the largest earthen dikes in the world over three miles long! Relish in the surrounding area's excellent hunting for Mule and White-Tailed deer, antelope, upland game birds, waterfowl, and varmints. Birdwatching is a popular activity as well. Experience some of Montana's best at the Tiber Dam-Lake Elwell marina!*

### **Fishing the Marias River**

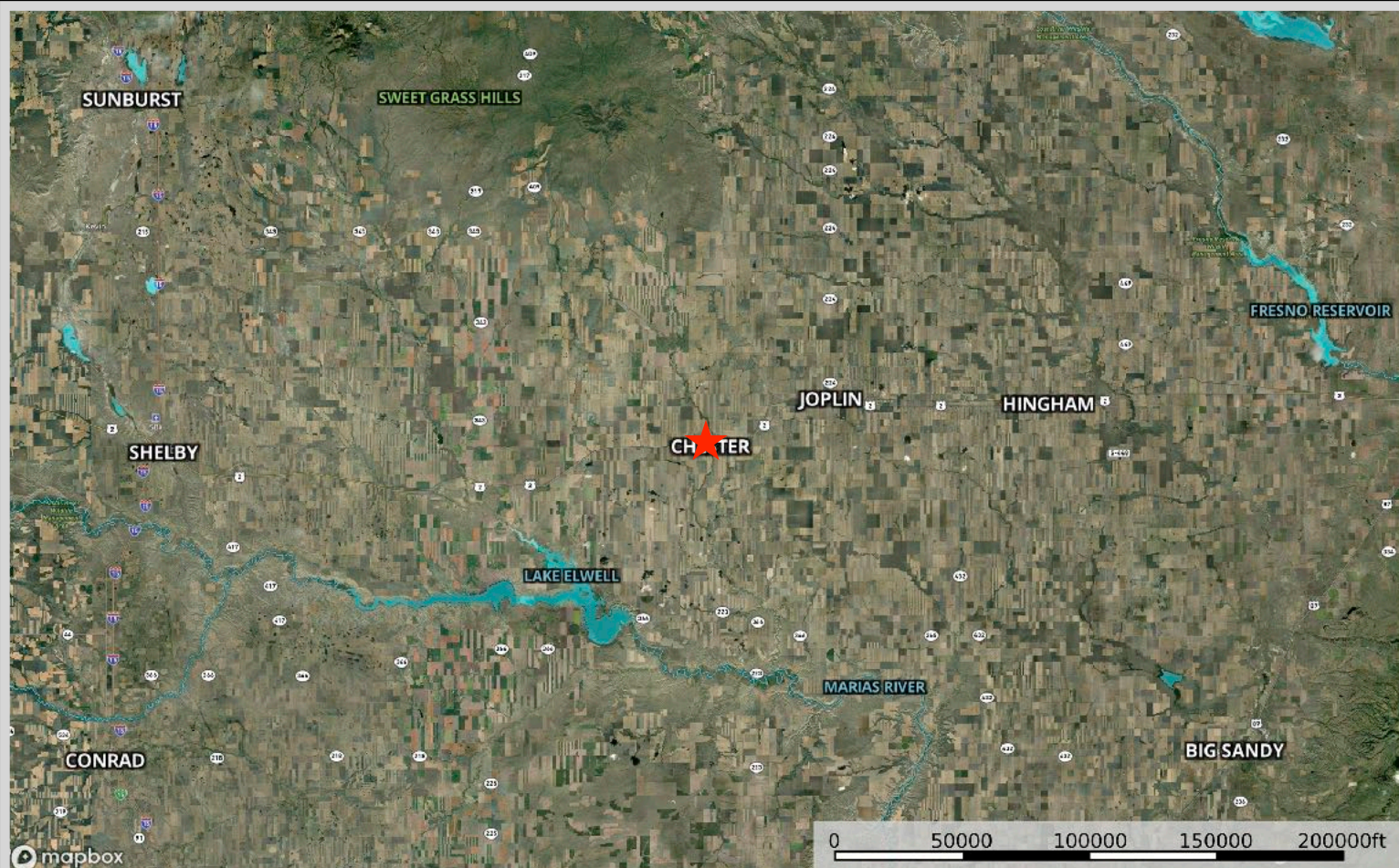
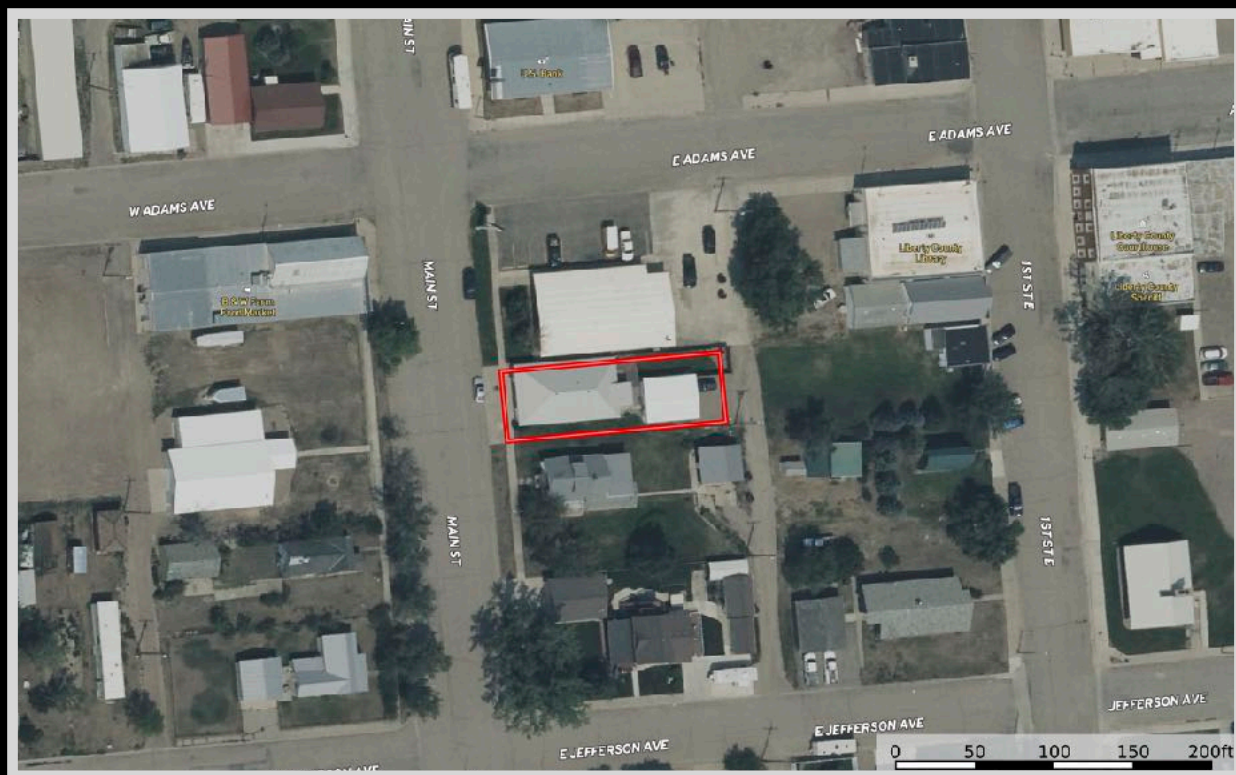
*The Marias River gently meanders for more than 60 miles through the rolling prairie before it spills into Lake Elwell. It is marked by the soft shale and sandstone bluffs that flank the river. Both cold water and warm water species can be found here, but it is primarily a warm water fishery near Tiber Reservoir. Walleye is the most abundant game fish, and every summer, there is a fishing tournament to declare the best fisherman. Walleye use the upper portion of the Marias for spawning thus the population remains in the river throughout the summer. Cold-water game fish such as Rainbow Trout and mountain whitefish inhabit this portion of the Marias but are lower in numbers. Northern pike, yellow perch, and burbot are other fish species that anglers seek. The non-game fish that inhabit these waters include common carp, Flathead chub, lake chub, emerald shiner, fathead minnow, longnose dace, and Rocky Mountain sculpin.*

### **Sweet Grass Hills**

*Located in north-central Montana along the Canadian border, the Sweet Grass Hills are an isolated mountain range that invites hiking and wildlife viewing of deer, antelope, elk, fox, golden eagles, and grouse! The Sweet Grass Hills are comprised of three buttes: the West Butte, Middle Butte, and East Butte. Hardly hills, these towering peaks reach 3,000' in elevation! The Hills are a result of igneous activity that occurred about 50 million years ago. Take the Sweet Grass Hills Backcountry Drive for 66 miles of remote and unique scenery.*



# Property Map



The information is provided by outside sources and deemed reliable but not guaranteed by the brokerage firm, its agents or representatives. Buyers and their agents are encouraged to conduct due diligence, and verify to their satisfaction, the information contained herein regarding property.