

239

WEST 125TH STREET

BETWEEN ADAM CLAYTON POWELL &
FREDERICK DOUGLASS BOULEVARDS
HARLEM



PROPERTY DETAILS

SIZE: 5,000 SF Ground Floor
5,000 SF Second Floor
+ Full Basement

FRONTAGE: 50'

CEILING HEIGHT: 15' Ground Floor
11' 10" Second Floor

POSSESSION: January 1, 2026

ASKING RENT: Upon Request

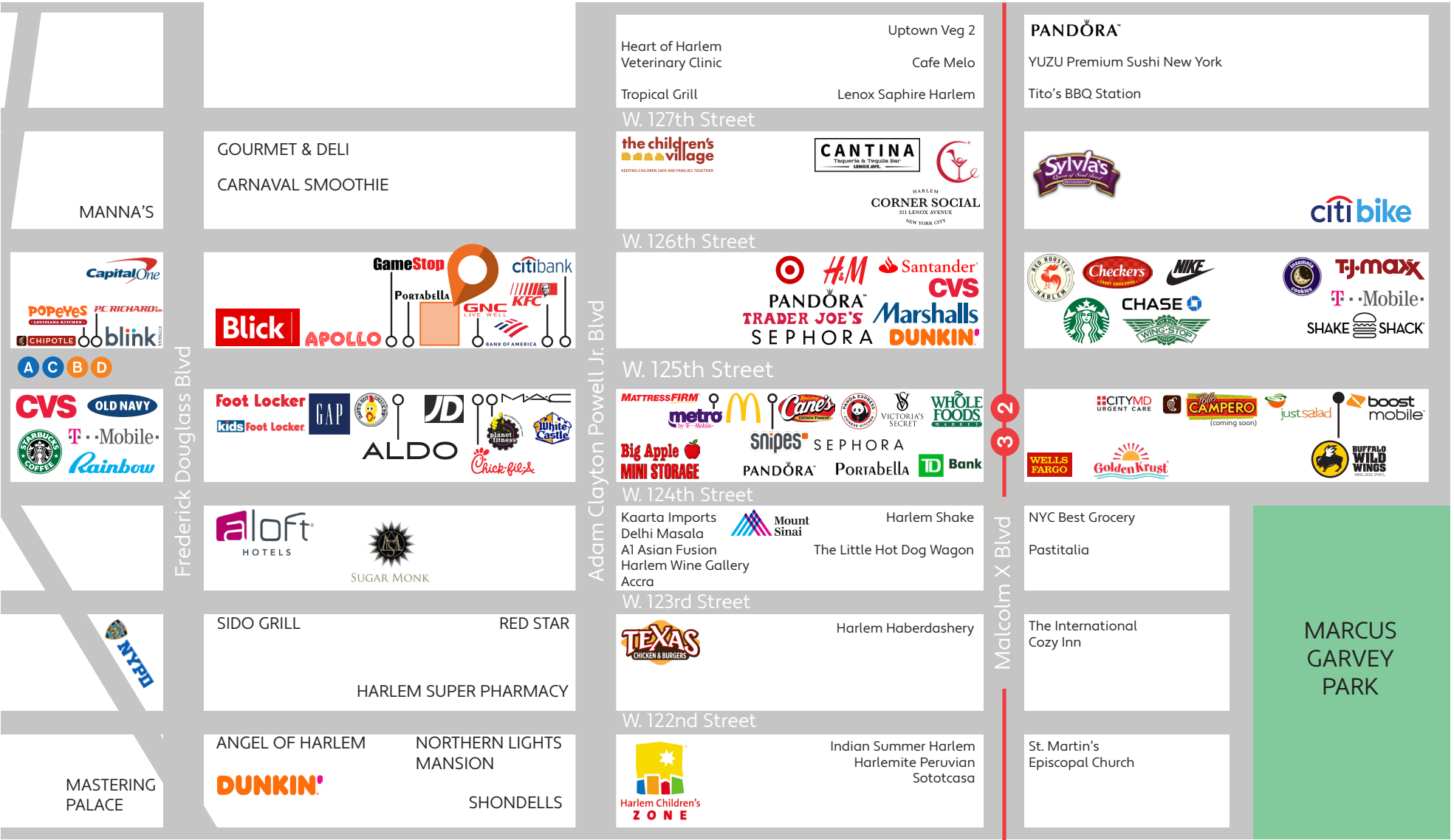
TRANSPORTATION: 

HIGHLIGHTS

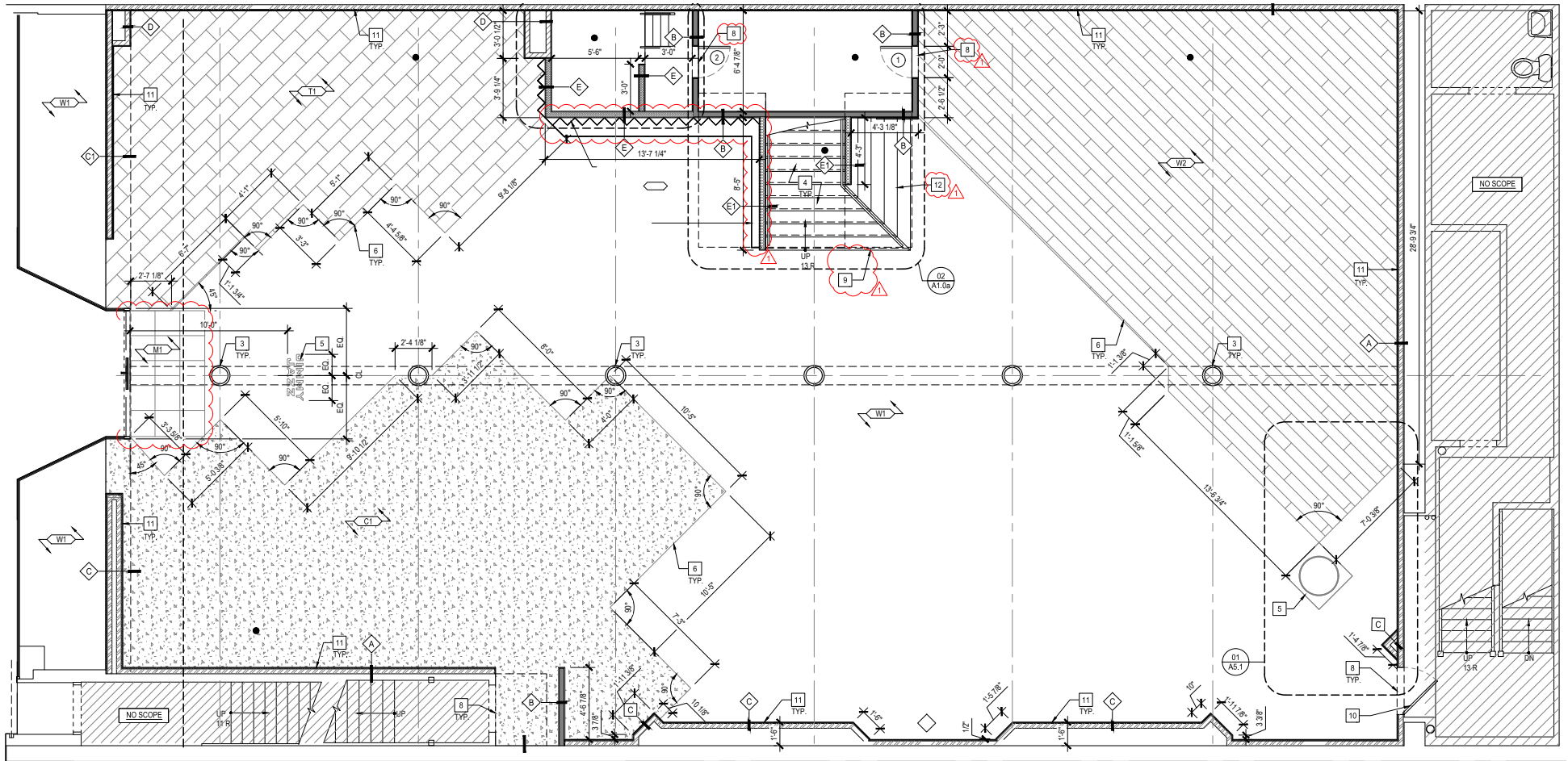
- Great branding & visibility
- Dominant presence in Harlem's top retail block
- Directly next door from the world famous Apollo theater
- Neighboring tenants include:
GAP, Aldo, MAC, Chick-fil-A, Planet Fitness, Portabella, KFC, Old Navy, H&M, Marshalls, Verizon, McDonald's, Payless, Rainbow, DSW, Capital One, Starbucks, Carter's, Foot Locker, Blick, Bank of America, Popeyes, & many more!



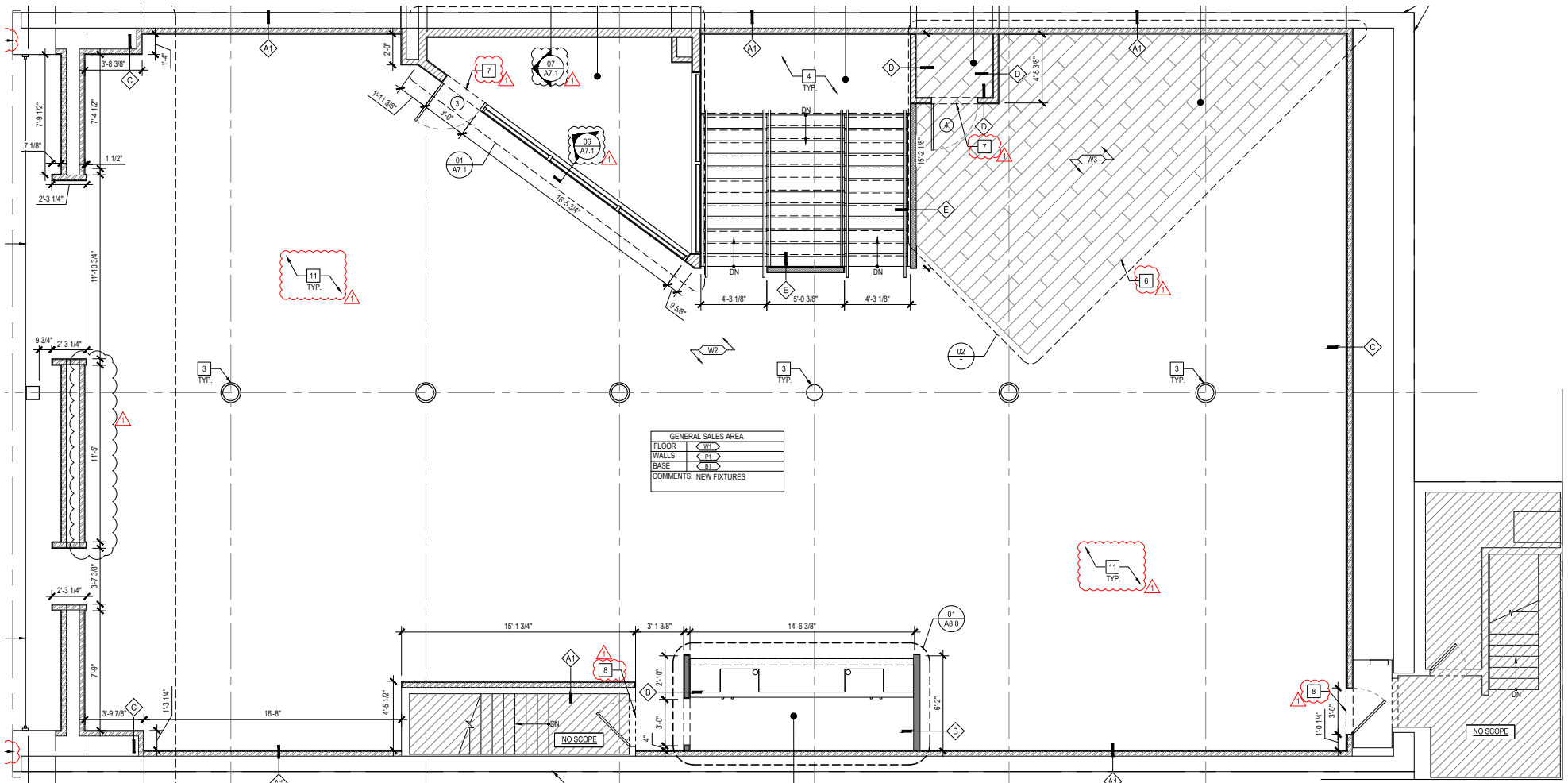
AREA MAP:



FLOOR PLANS: GROUND FLOOR - 5,000 SF



FLOOR PLANS: SECOND FLOOR - 5,000 SF



239

WEST 125TH STREET
BETWEEN ADAM CLAYTON POWELL &
FREDERICK DOUGLASS BOULEVARDS
HARLEM

FOR MORE INFORMATION,
PLEASE CONTACT:

ISAAC COOPER

786.510.2349 | ICooper@ksrny.com

FREDDY SOUID

917.968.0329 | FSoud@ksrny.com

JACK HAMADANI

718.415.0095 | JHamadani@ksrny.com

