

AVISON
YOUNG

EDEN ROAD
MEDICAL
CENTER

21,310 SF
Available for Lease

First Floor: 3,502 SF Immediately Available

730 Eden Road, Lancaster, PA

Property overview

PROPERTY OVERVIEW	
Address	730 Eden Road, Lancaster, PA
SF	21,310 SF
Township	Manheim
Zoning	Commercial / Office / Medical
Signage	Door & monument
Lighting	LED
Heating / Cooling	Forced air



Convenient regional access for patients and providers

**AVISON
YOUNG**

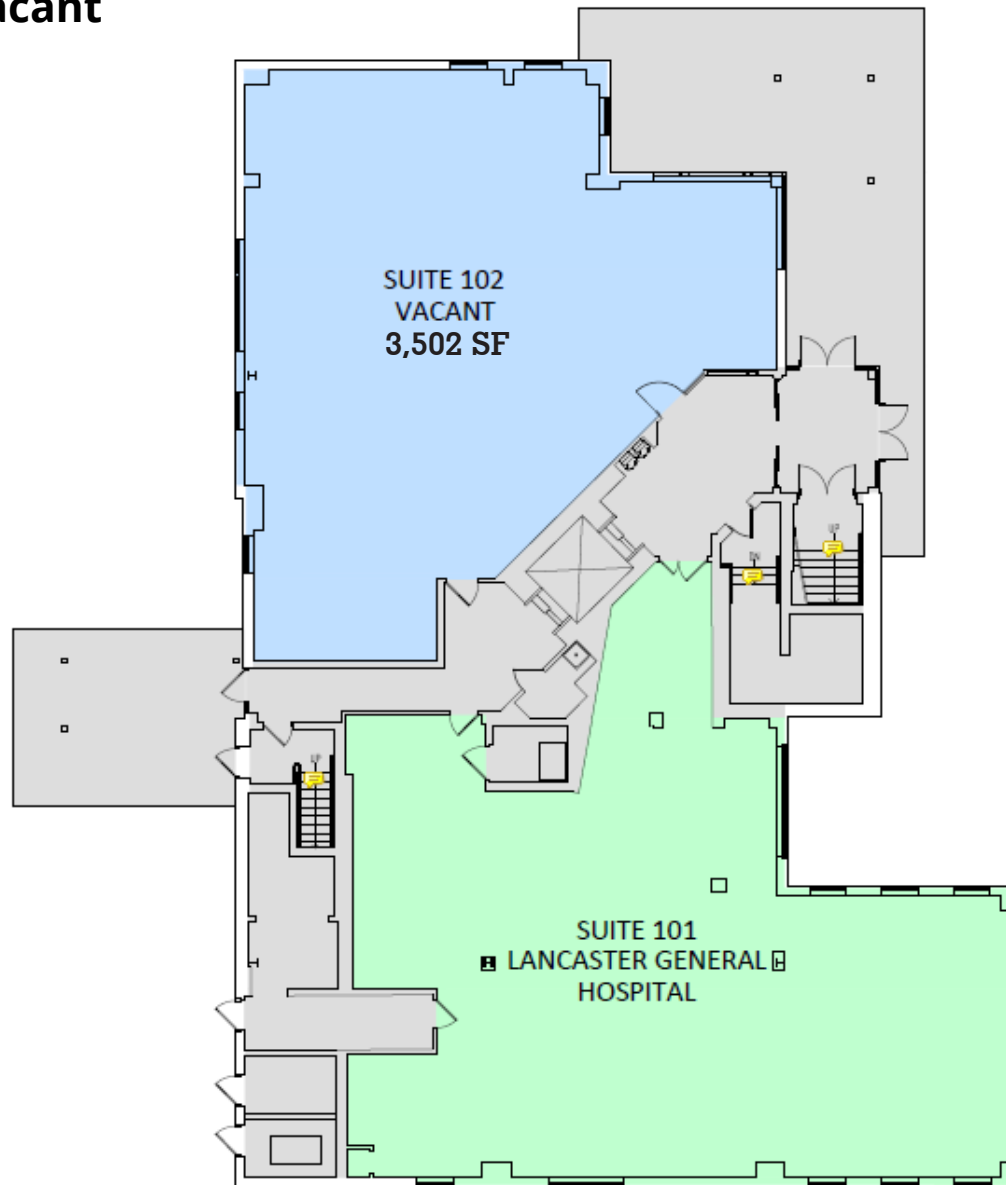
730 Eden Road in Lancaster, PA offers excellent medical accessibility with immediate connections to Route 30, Route 222, Route 283, and Oregon Pike, providing convenient regional access for patients and emergency vehicles. Located just off Eden Road with ample parking, handicap spaces, and elevator access, the site is well suited for medical use.



Floor plan

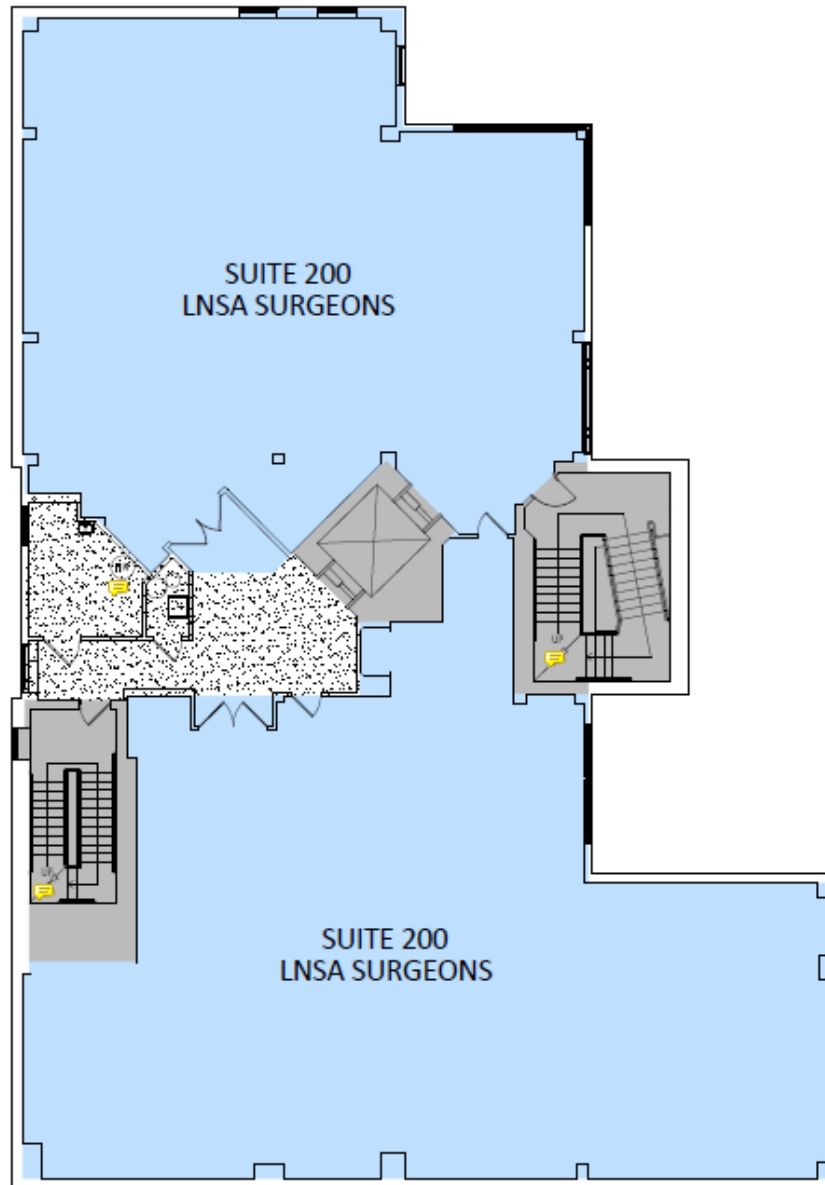
First Floor | 7,174 SF Available

Suite 102: 3,502 SF Vacant



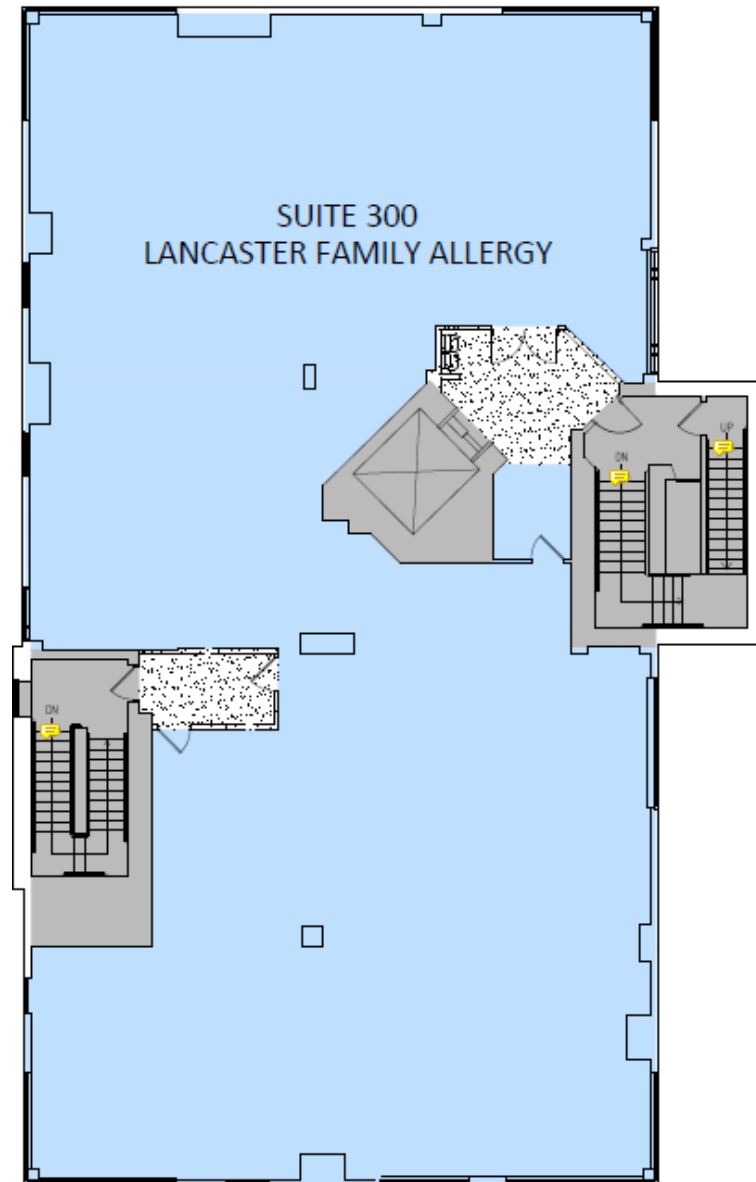
Floor plan

Second Floor | 7,663 SF Available



Floor plan

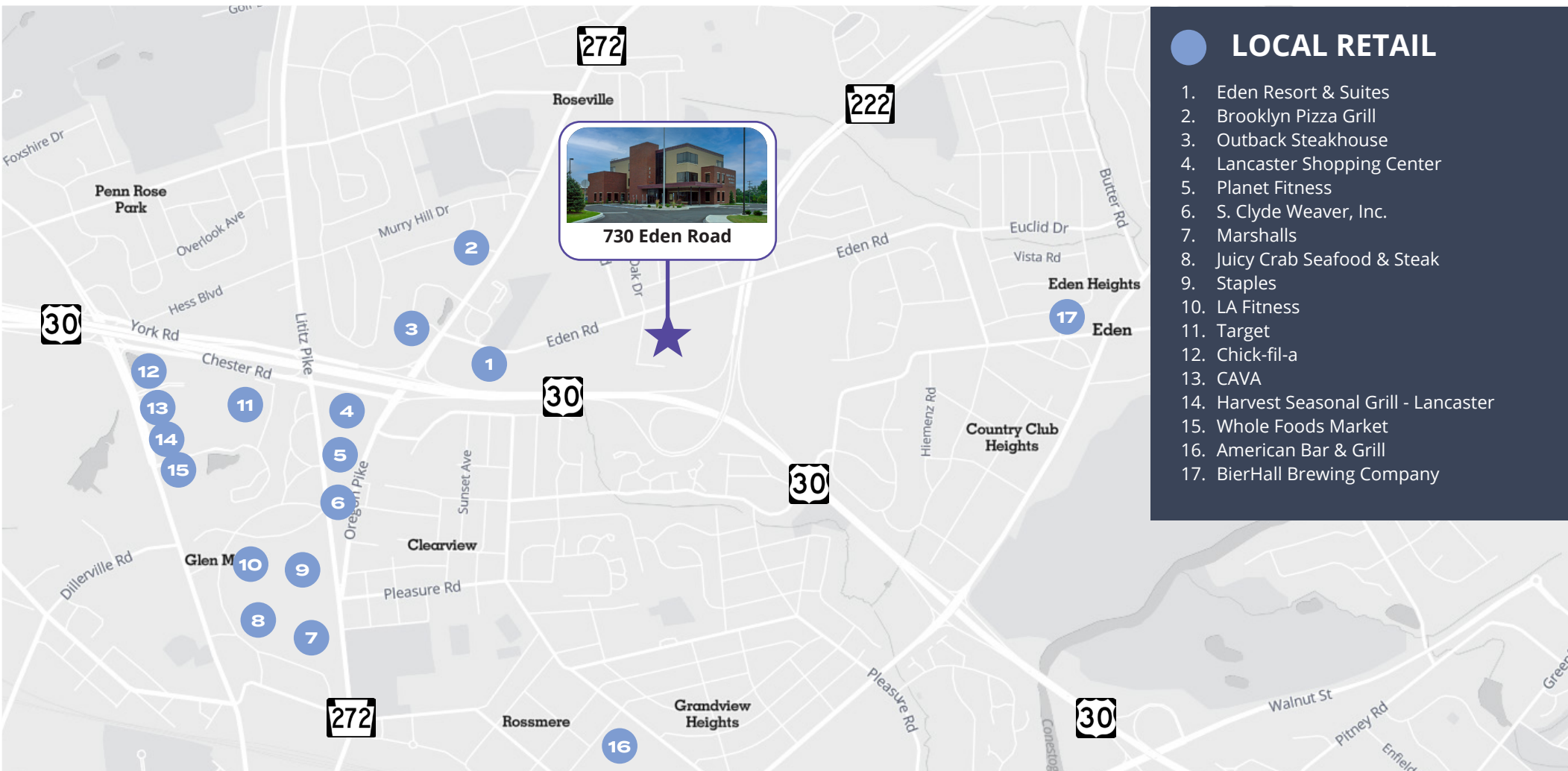
Third Floor | 6,473 SF Available



Prime Lancaster location with direct highway connectivity

**AVISON
YOUNG**

Ideally situated along Eden Road in Lancaster, this medical office offers convenient access to a wide range of nearby amenities, including restaurants, hotels, fitness centers, grocery stores, and local retailers. Its central location provides exceptional convenience and accessibility for patients, staff, and visitors throughout the Lancaster area.



Get more information:

Patrick Kelley

Principal

610 276 1082

patrick.kelley@avisonyoung.com

John Sudjian

Associate

610 276 1080

john.sudjian@avisonyoung.com