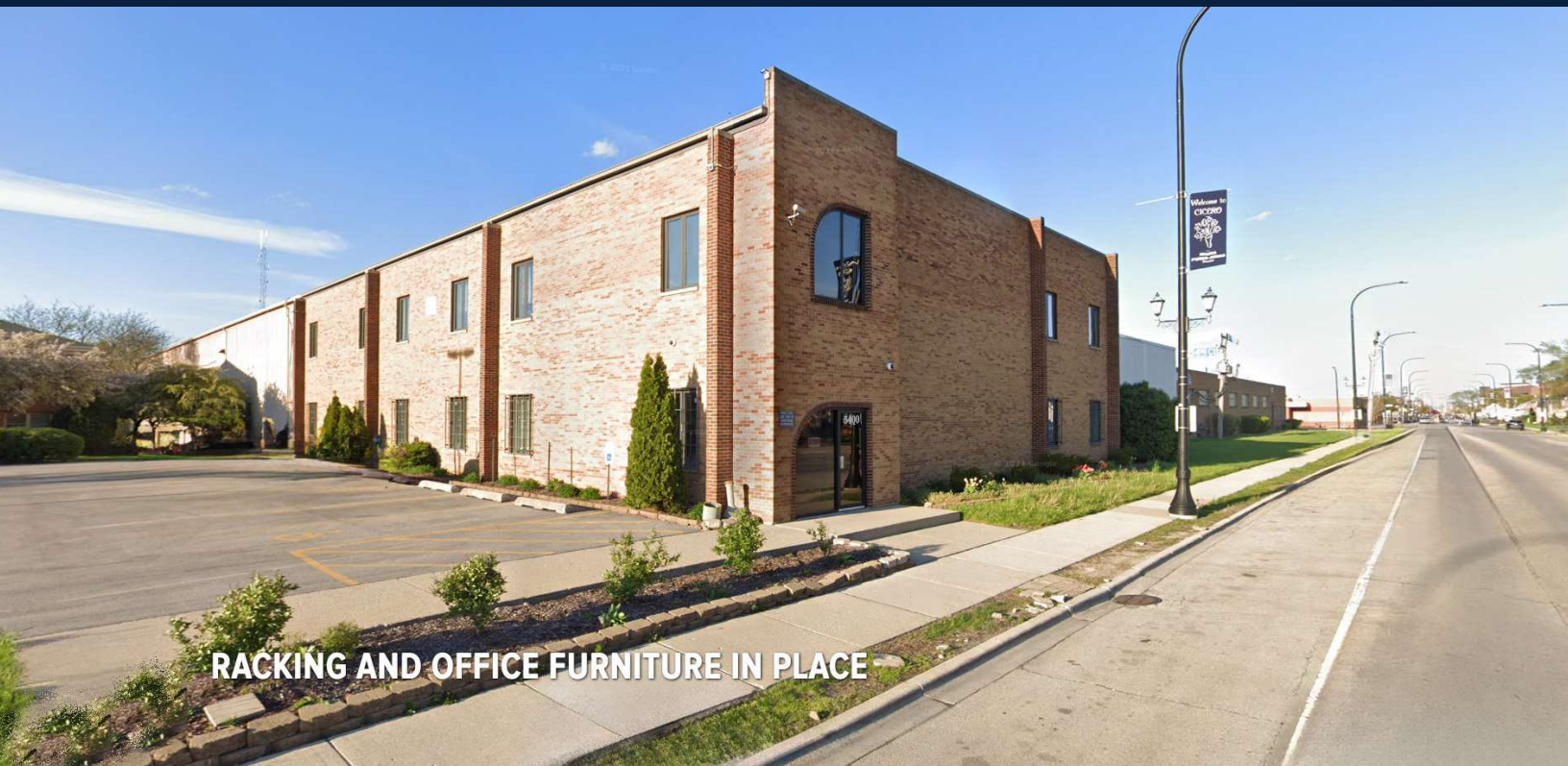


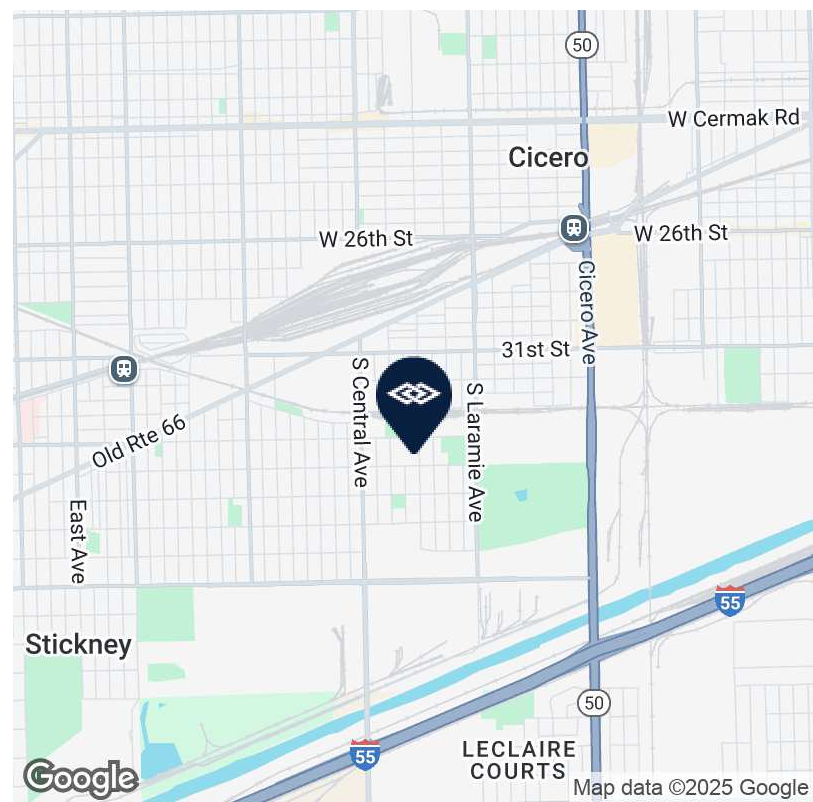
FOOD GRADE BUILDING AVAILABLE FOR SALE & LEASE

5400 W 35TH ST, CICERO, IL 60804



OFFERING SUMMARY

TOTAL BUILDING SF	133,565 SF
WAREHOUSE	119,087 SF
FIRST FLOOR OFFICE	6,882 SF
SECOND FLOOR OFFICE	7,596 SF
LOT SIZE	10 Acres
CEILING HEIGHT	24' Clear
LOADING	2 Ext Docks 4 Int Docks 1 DID
POWER	2,800A@240V; Heavy Power
UTILITIES	Gas heating
SPRINKLERS	Yes
PARKING	40 Parking spots & Trailer Parking
ZONING	M-2, Cicero
SALE PRICE	Subject to Offer
LEASE RATE	Subject to Offer

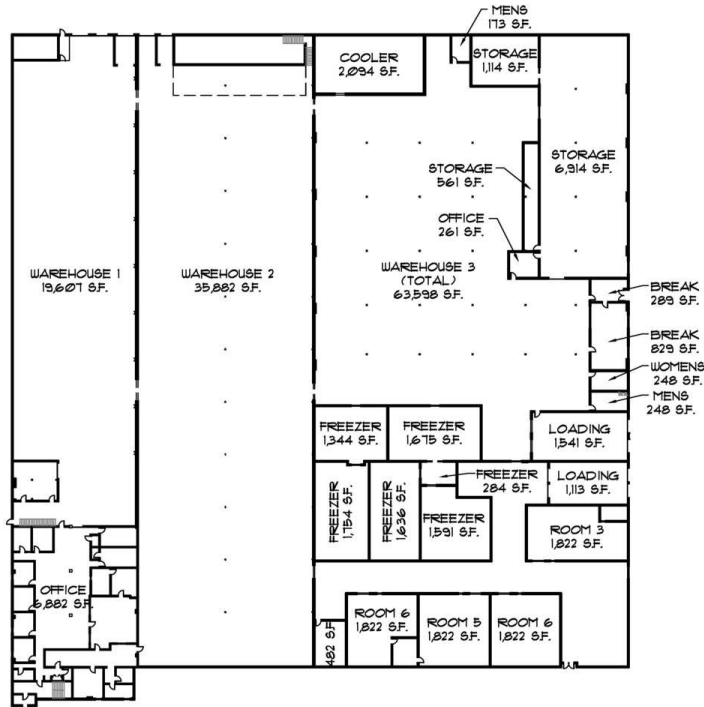


GEORGE CIBULA, SIOR | Managing Broker | 630.993.3860 | gcibula@darwinpw.com
MATT LEWANDOWSKI | Principal | 630.993.3870 | mlewandowski@darwinpw.com



FOOD GRADE BUILDING AVAILABLE FOR SALE & LEASE

5400 W 35TH ST, CICERO, IL 60804



FIRST FLOOR PLAN
1" = 50'-0"



SECOND FLOOR PLAN
1" = 50'-0"



GEORGE CIBULA, SIOR | Managing Broker | 630.993.3860 | gcibula@darwinpw.com
MATT LEWANDOWSKI | Principal | 630.993.3870 | mlewandowski@darwinpw.com

