



One Park Place

621 NW 53rd Street, Boca Raton FL 33487



One Park Place is located in the prestigious Arvida Park of Commerce, strategically between the Palm Beach International Airport and Fort Lauderdale/Hollywood Airport. One Park Place provides excellent access to I-95, Florida Turnpike and Tri-Rail as well as a host of restaurants and shops, along with on-site Property Management and on-site cafe. Additionally, One Park Place adjoins the Embassy Suites Hotel which provides One Park Place tenants convenient access to top lodging accommodations.

WWW.ONEPARKPLACEBOCA.COM



BUILDING HIGHLIGHTS

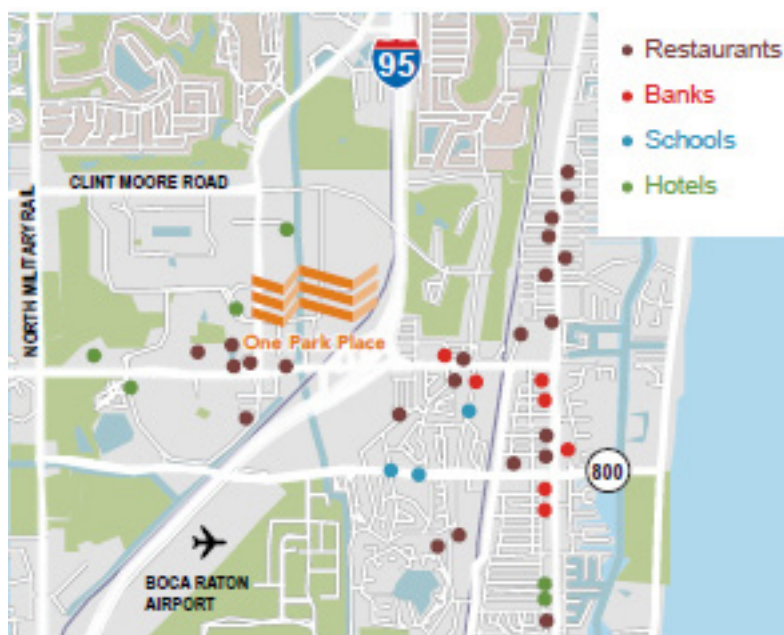
- Tenant-ready space
- Five story covered parking garage
- On-site property management and day porter
- Cafe with outdoor patio seating
- Exterior balconies, outdoor courtyard
- Large space availabilities
- Adjacent to hotel and restaurants
- Minutes to major Interstate and airports

Asking rate: \$24.00 p.s.f. NNN
Operating expenses: \$15.00 r.s.f.

WWW.ONEPARKPLACEBOCA.COM

AVAILABLE SPACE

SUITE	RSF	DATE AVAILABLE
1st Floor Cafe	920	Immediately
360	2,751	Immediately
340	4,819	Immediately
370	4,278	Immediately
410	6,164	Immediately
360° 460	11,192	Immediately
501	11,736	Immediately
360° 600	35,668	Immediately
360° 700	35,668	Immediately
350	1,590	Immediately
385	2,808	Immediately



CONTIGUOUS 107,000 R.S.F.

FOR MORE INFORMATION, PLEASE
CONTACT THE LEASING AGENT:

Brady Titcomb
Vice President
+ 1 954 653 3222
brady.titcomb@am.jll.com



Scan to view
property video



Lic. Real Estate Broker

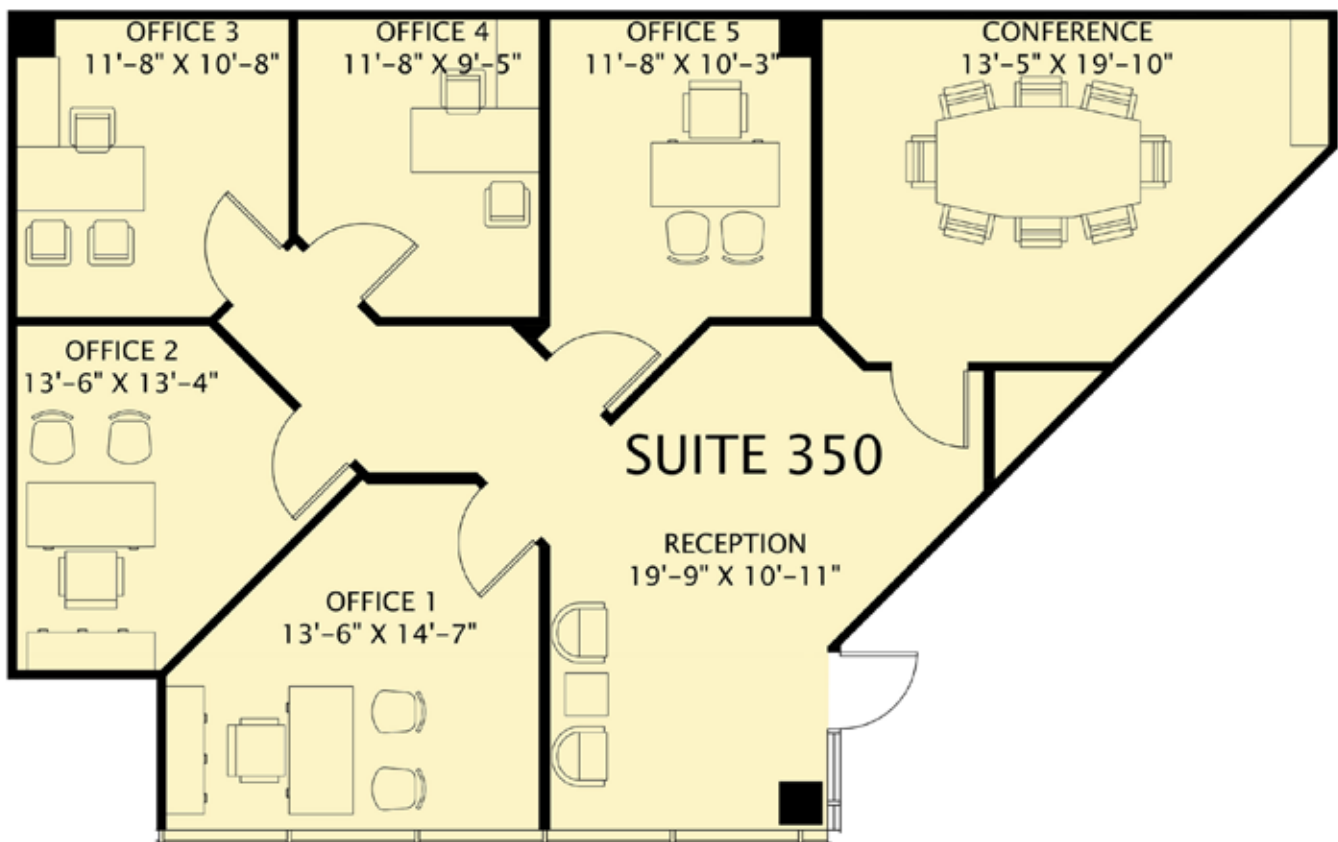
©2019 Jones Lang LaSalle Brokerage, Inc. All rights reserved. All information contained herein is from sources deemed reliable; however, no representation or warranty is made to the accuracy thereof.



One Park Place

621 NW 53rd Street, Boca Raton FL 33487

SUITE 350 - 1,590 SF



FOR MORE INFORMATION, PLEASE CONTACT THE LEASING TEAM:

Brady Titcomb
Sr. Vice President
+ 1 954 653 3222
brady.titcomb@am.jll.com



Scan to view
property video

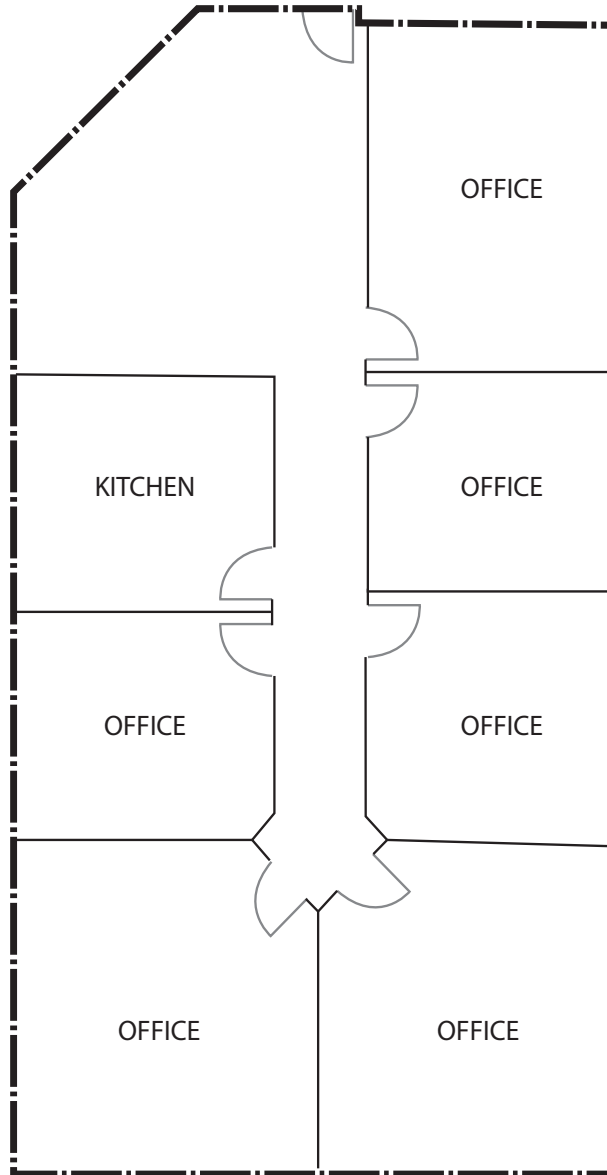




One Park Place

621 NW 53rd Street, Boca Raton FL 33487

SUITE 330 - 1,818 SF



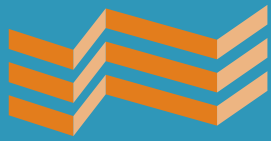
FOR MORE INFORMATION, PLEASE CONTACT THE LEASING TEAM:

Brady Titcomb
Vice President
+ 1 954 653 3222
brady.titcomb@am.jll.com
Lic. Real Estate Brokers



Scan to view
property video

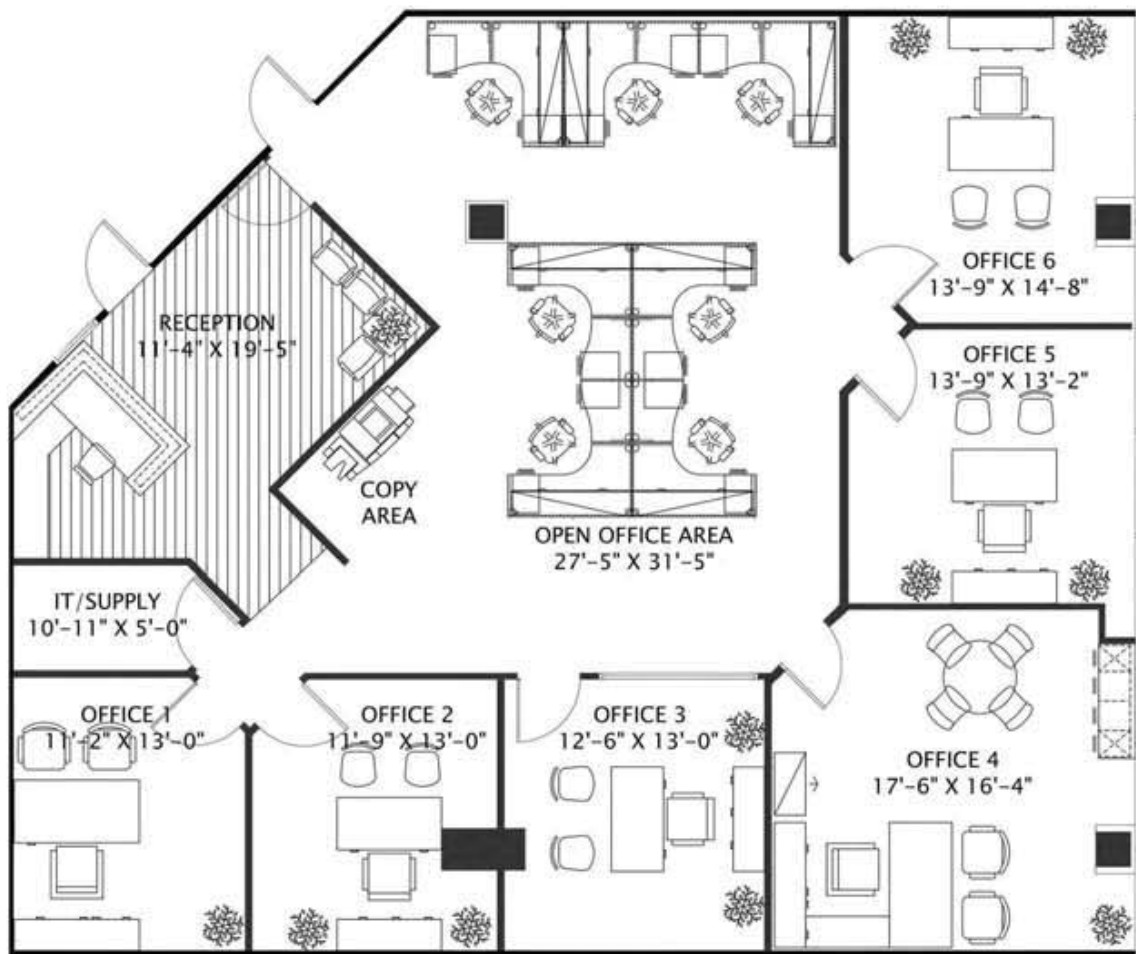




One Park Place

621 NW 53rd Street, Boca Raton FL 33487

SUITE 360 - 2,751 SF



FOR MORE INFORMATION, PLEASE CONTACT THE LEASING TEAM:

Brady Titcomb
Vice President
+ 1 954 653 3222
brady.titcomb@am.jll.com
Lic. Real Estate Brokers



Scan to view
property video

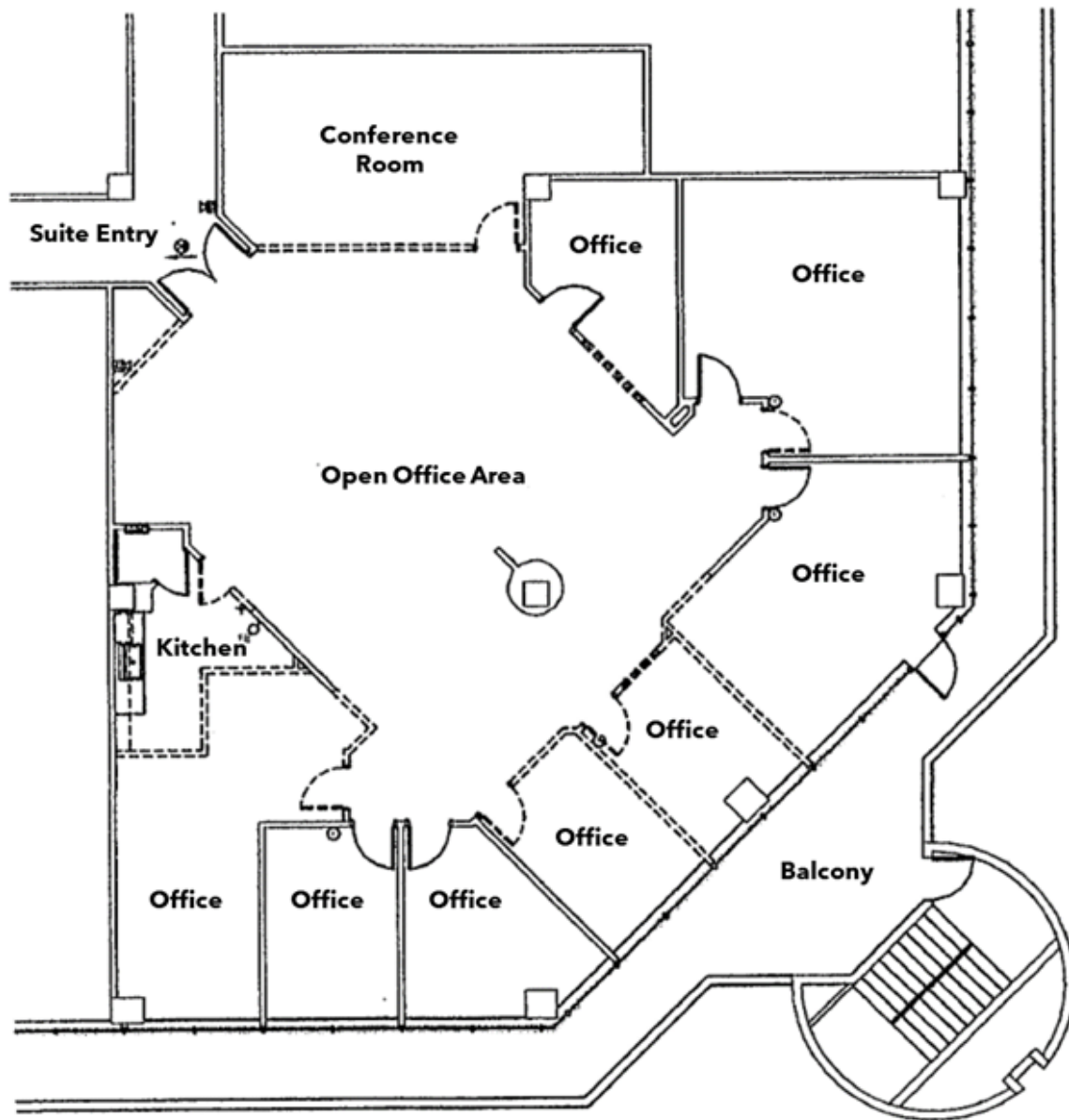




One Park Place

621 NW 53rd Street, Boca Raton FL 33487

SUITE 370 - 4,278 RSF



FOR MORE INFORMATION, PLEASE CONTACT:

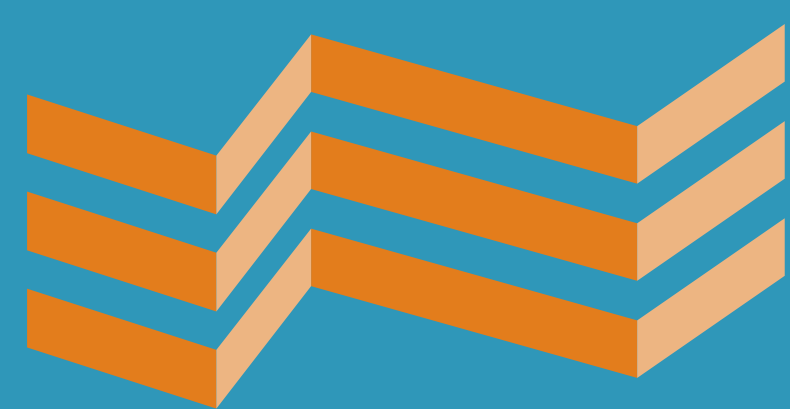
Brady Titcomb
Vice President
+ 1 954 653 3222
brady.titcomb@am.jll.com

Lic. Real Estate Brokers



Scan to view
property video

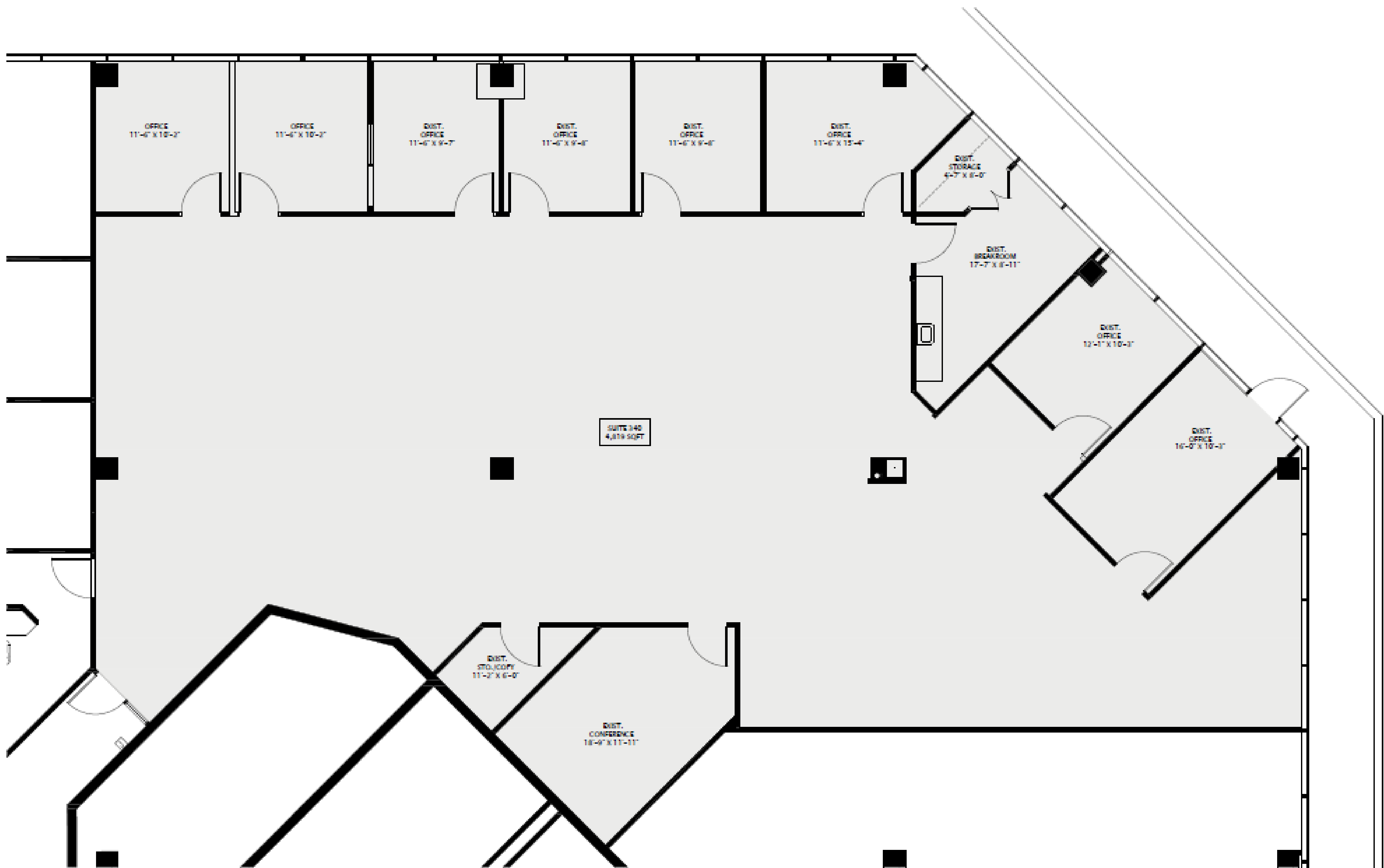




One Park Place

621 NW 53rd Street, Boca Raton FL 33487

Suite 340 - 4,819 rsf



FOR MORE INFORMATION, PLEASE CONTACT THE LEASING TEAM:

Brady Titcomb
Vice President
+ 1 954 653 3222
brady.titcomb@am.jll.com
Lic. Real Estate Brokers



Scan to view
property video

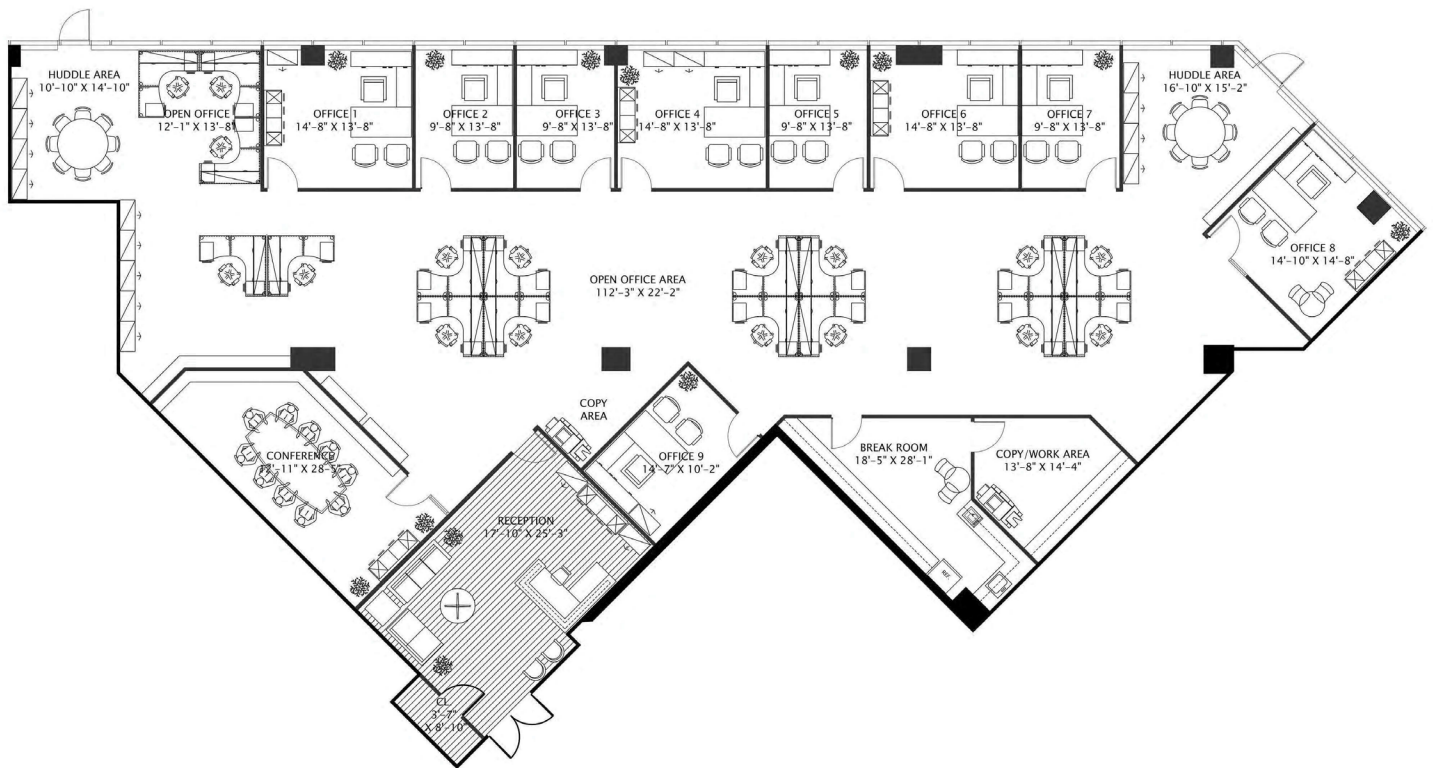




One Park Place

621 NW 53rd Street, Boca Raton FL 33487

SUITE 410 - 6,164 SF



FOR MORE INFORMATION, PLEASE CONTACT THE LEASING TEAM:

Brady Titcomb
Vice President
+ 1 954 653 3222
brady.titcomb@am.jll.com
Lic. Real Estate Brokers



Scan to view
property video





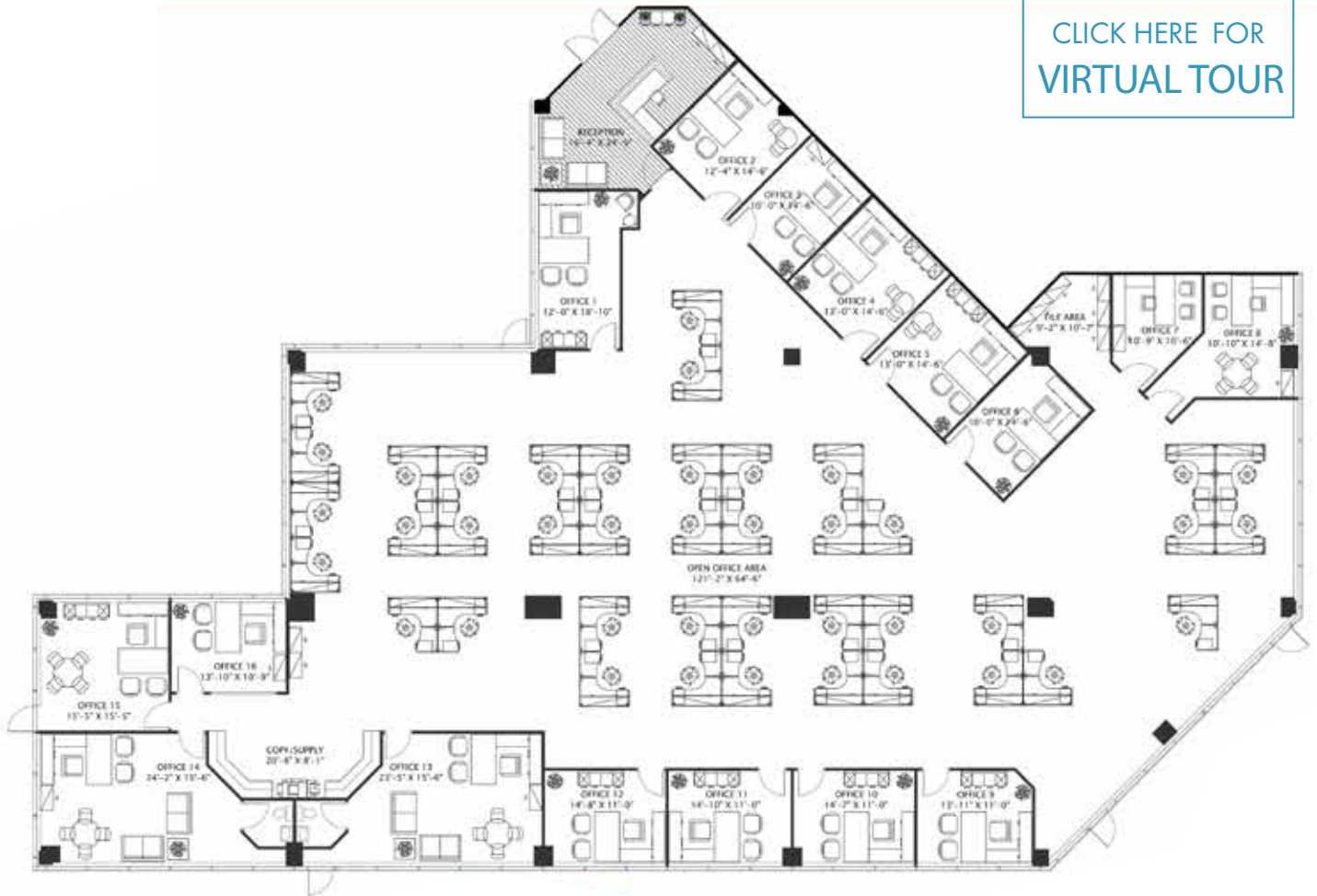
One Park Place

621 NW 53rd Street, Boca Raton FL 33487

SUITE 460 - 11,192 SF



CLICK HERE FOR
VIRTUAL TOUR



FOR MORE INFORMATION, PLEASE CONTACT:

Brady Titcomb
Vice President
+ 1 954 653 3222
brady.titcomb@am.jll.com

Lic. Real Estate Brokers



Scan to view
property video

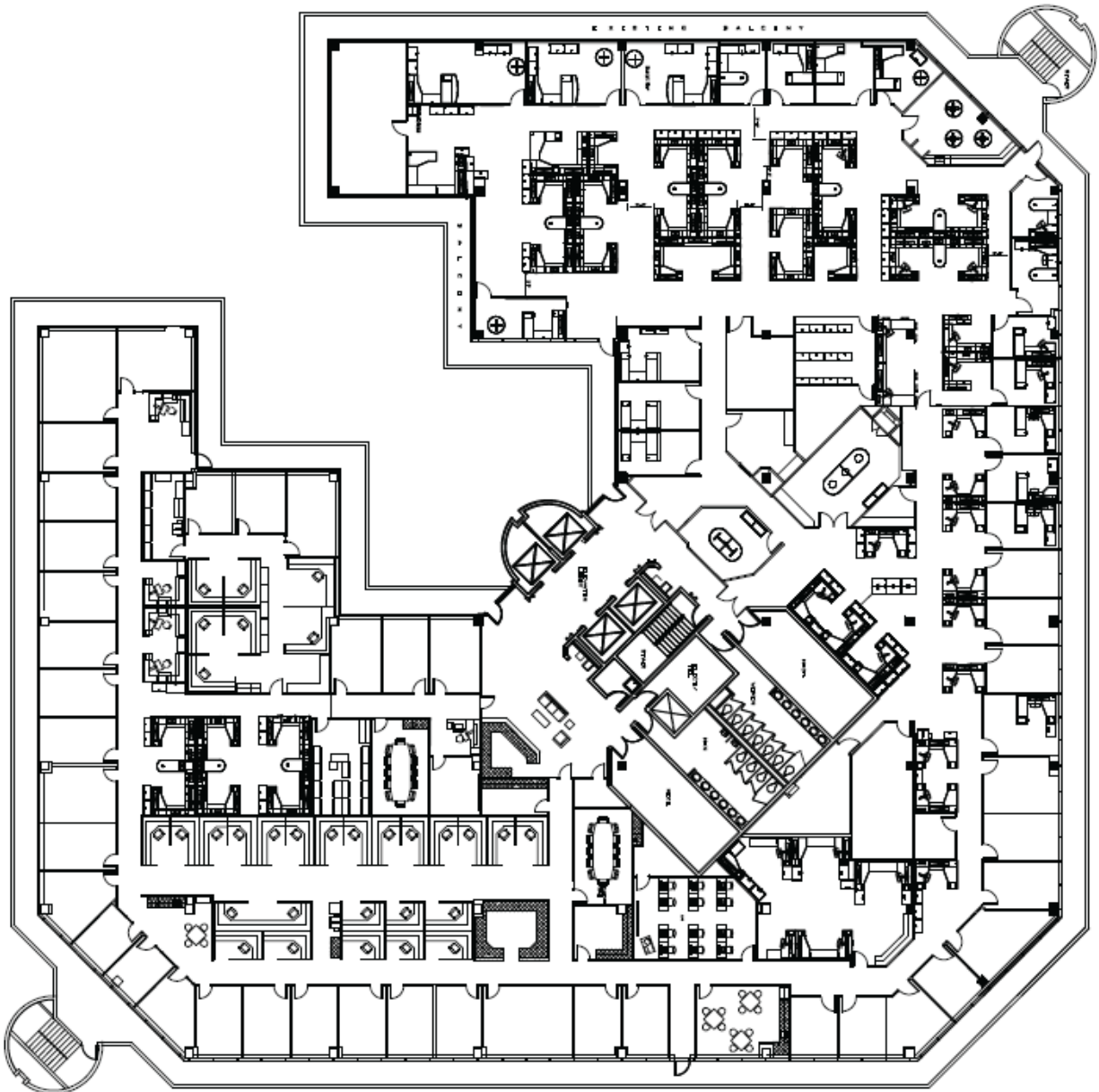




One Park Place

621 NW 53rd Street, Boca Raton FL 33487

Suite 600 - 35,669 r.s.f.



FOR MORE INFORMATION, PLEASE CONTACT:

Brady Titcomb

Vice President

+ 1 954 653 3222

brady.titcomb@am.jll.com

Lic. Real Estate Brokers



Scan to view
property video

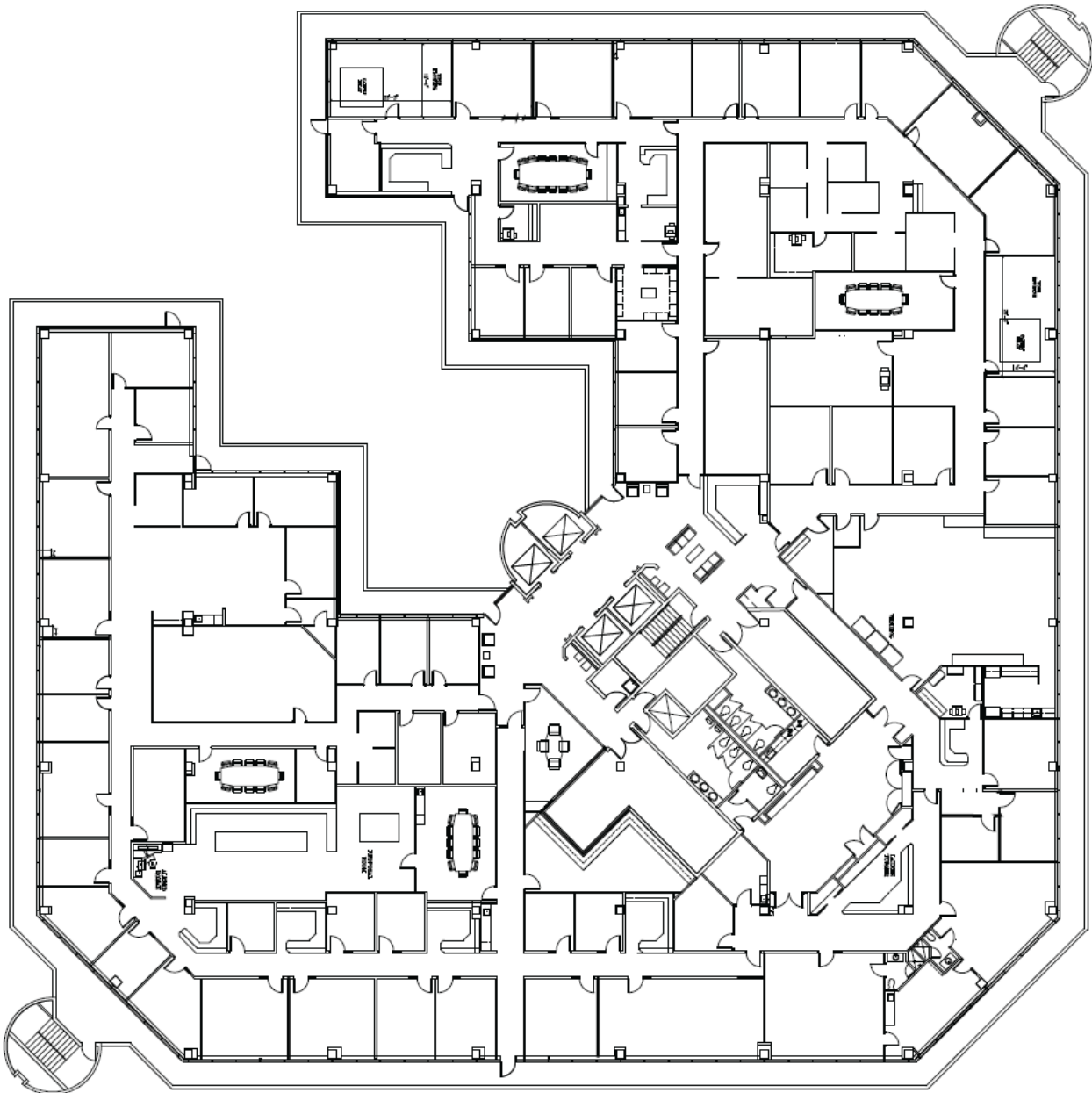




One Park Place

621 NW 53rd Street, Boca Raton FL 33487

Suite 700 - 35,669 r.s.f.



FOR MORE INFORMATION, PLEASE CONTACT:

Brady Titcomb

Vice President

+ 1 954 653 3222

brady.titcomb@am.jll.com

Lic. Real Estate Brokers



Scan to view
property video

