

## MEDICAL OFFICE TIMESHARE IN OVIEDO

OVIEDO, FL 32765

# 1000 Executive Dr



### OFFERING SUMMARY

Lease Rate:	Negotiable
Building Size:	12,728 SF
Available SF:	1,260 SF
Year Built:	1989
Renovated:	2016

### PROPERTY OVERVIEW

Suite 6 of 1000 Executive Dr is available for timeshare. The suite is a built-out medical office with 3 exam rooms, 2 private restrooms, reception, additional administrative space, check-in/check-out, and a waiting area. Days available for the timeshare include Monday-Wednesday and Friday.

The suite is located within The Medical Village building at Oviedo with co-tenants including a pharmacy, CenterWell, a primary care physician, Modern Foot and Ankle, and a vein clinic. There is easy access off Broadway St (18,400 Annual Average Daily Traffic) and the property less than 3 miles from the N Florida 417 Toll road.

### PROPERTY HIGHLIGHTS

- Move-In Ready Medical Office
- 5/1,000 Parking
- Surrounded By Additional Medical Office Users
- Close Proximity to Oviedo Mall Blvd, Red Bug Lake Rd, and Florida 417
- Less Than 2 Miles to Oviedo Medical Center
- Timeshare Option - Perfect For New Clinics Looking to Open in Oviedo!

PRESENTED BY  
**SIRENA MADDEN**

407.267.7626  
smadden@millenia-partners.com

**ASHLEY WALKER**

407.430.3462  
awalker@millenia-partners.com

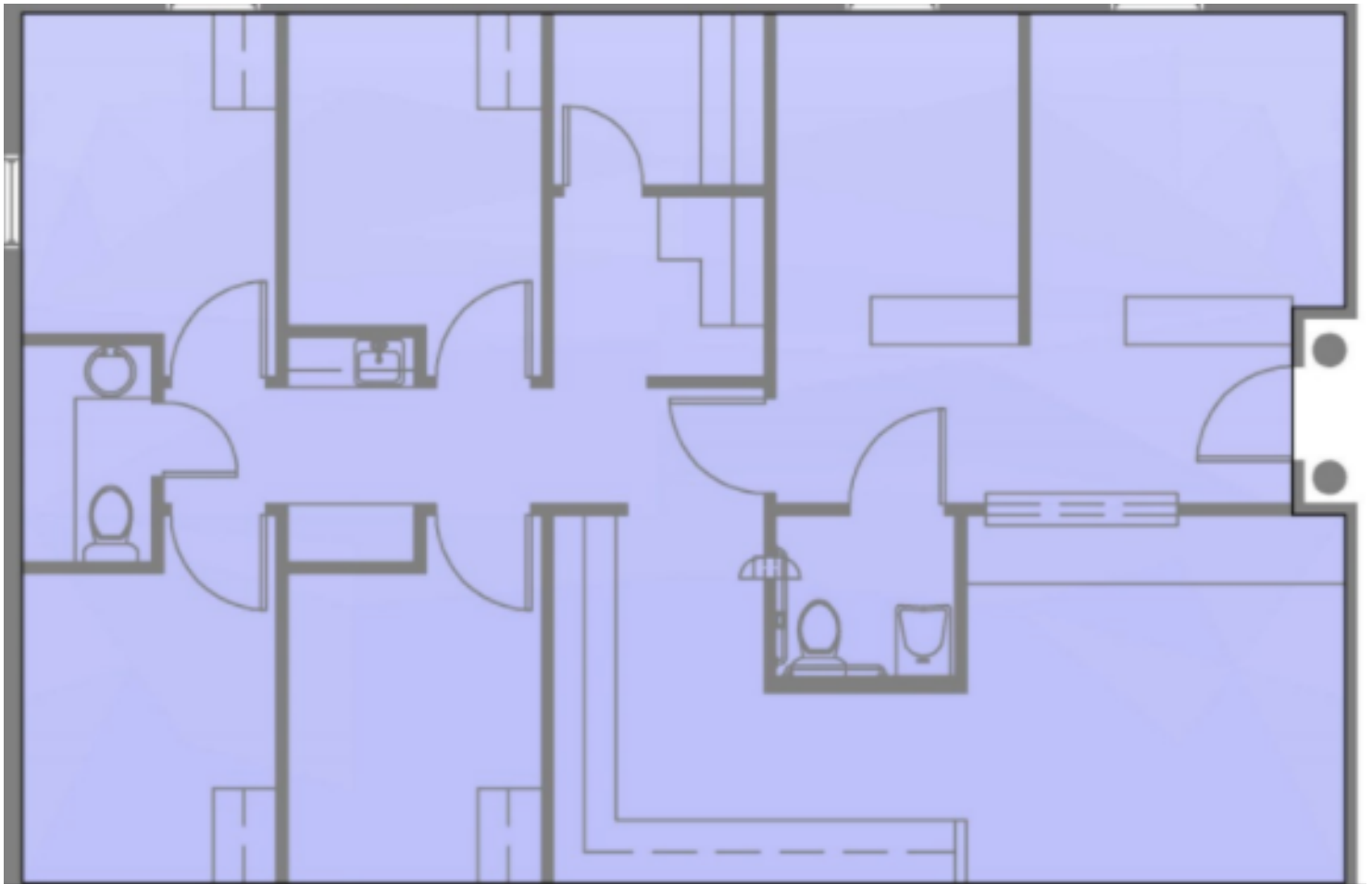
OFFICE BUILDING

## For Lease

## FLOOR PLAN

OVIEDO, FL 32765

# 1000 Executive Dr



PRESENTED BY  
**SIRENA MADDEN**

407.267.7626

smadden@millenia-partners.com

**ASHLEY WALKER**

407.430.3462

awalker@millenia-partners.com

OFFICE BUILDING

## For Lease

ADDITIONAL PHOTOS

OVIEDO, FL 32765

1000 Executive Dr



PRESENTED BY  
**SIRENA MADDEN**

407.267.7626  
smadden@millenia-partners.com

**ASHLEY WALKER**

407.430.3462  
awalker@millenia-partners.com

OFFICE BUILDING

For Lease



## LOCATION MAP

OVIEDO, FL 32765

# 1000 Executive Dr



Google

Map data ©2022 Google Imagery ©2022 , Landsat / Copernicus, Maxar Technologies, U.S. Geological Survey

PRESENTED BY  
**SIRENA MADDEN**

407.267.7626

smadden@millenia-partners.com

**ASHLEY WALKER**

407.430.3462

awalker@millenia-partners.com

OFFICE BUILDING

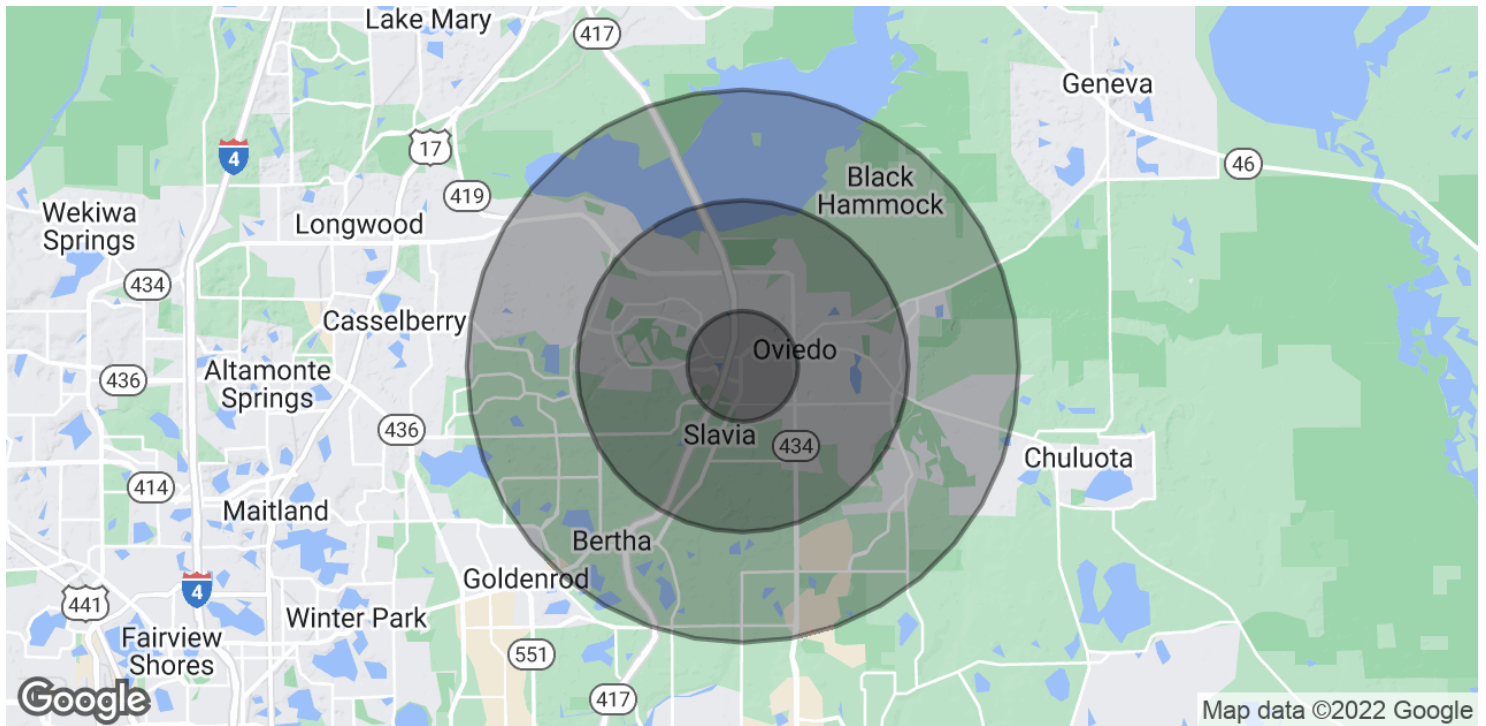
## For Lease



## DEMOGRAPHICS MAP & REPORT

OVIEDO, FL 32765

# 1000 Executive Dr



### POPULATION

#### 1 MILE

#### 3 MILES

#### 5 MILES

Total Population	3,844	44,915	121,508
Average Age	40.0	36.3	34.9
Average Age (Male)	34.1	34.7	33.5
Average Age (Female)	42.9	37.3	35.9

### HOUSEHOLDS & INCOME

#### 1 MILE

#### 3 MILES

#### 5 MILES

Total Households	1,403	15,137	41,312
# of Persons per HH	2.7	3.0	2.9
Average HH Income	\$82,606	\$90,928	\$85,922
Average House Value	\$338,449	\$341,658	\$318,763

\* Demographic data derived from 2020 ACS - US Census

PRESENTED BY  
**SIRENA MADDEN**

407.267.7626  
smadden@millenia-partners.com

**ASHLEY WALKER**

407.430.3462  
awalker@millenia-partners.com

OFFICE BUILDING

## For Lease