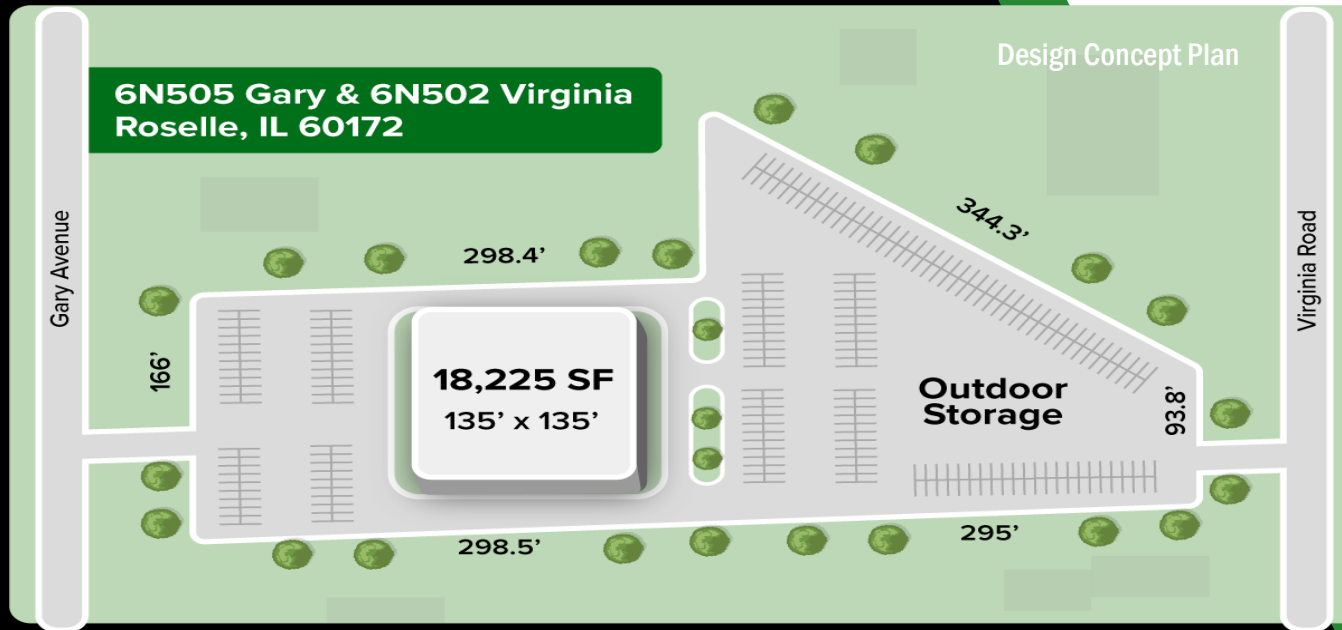


DEVELOPMENT OPPORTUNITY



2.42 Acres For Sale For Redevelopment

6N505 Gary & 6N502 Virginia Roselle IL 60172

Brad Bullington-630-674-6989

GC Realty & Development LLC 219 E. Irving Pk. Rd. Roselle IL 60172

All information deemed accurate but not guaranteed.

Sale Price: \$975,000



PROPERTY INFORMATION

- ◆ Size: 105,415 SF
- ◆ Traffic Ct: 35K Per Day
- ◆ Frontage: 166 FT Gary
- ◆ Pins: 02-08-201-009
02-08-201-014
- ◆ Taxes: \$14,500
- ◆ Zoning: R

Unincorporated Dupage County

PROPERTY SUMMARY

2.4 Acres for sale for redevelopment in Dupage County Roselle. Currently R-1 but can easily be rezoned to B-2 for service type uses, outdoor storage, car sales, etc. Unique layout connecting Gary Ave and Virginia.



Brad Bullington

630-674-6989

brad@gcrealtyinc.com

Tony Bonovalonta

312-613-8377

GC Realty & Development LLC

215 E. Irving Pk. Rd. Roselle IL 60172

Sale Price: \$975,000



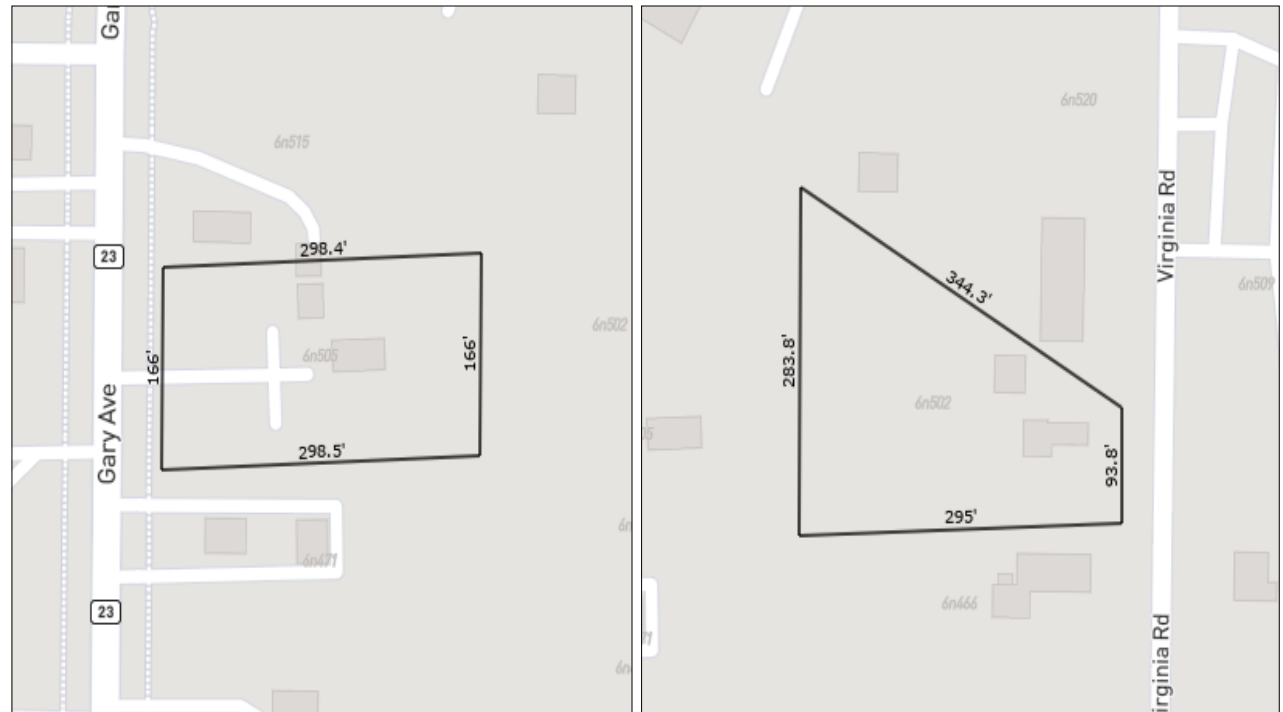
PROPERTY INFORMATION

- ◆ Size: 105,415 SF
- ◆ Traffic Ct: 35K Per Day
- ◆ Frontage: 166 FT Gary
- ◆ Pins: 02-08-201-009
02-08-201-014
- ◆ Taxes: \$14,500
- ◆ Zoning: R

Unincorporated Dupage County

PROPERTY SUMMARY

2.4 Acres for sale for redevelopment in Dupage County Roselle. Currently R-1 but can easily be rezoned to B-2 for service type uses, outdoor storage, car sales, etc. Unique layout connecting Gary Ave and Virginia.



Brad Bullington

630-674-6989

brad@gcrealtyinc.com

Tony Bonovalonta

312-613-8377

GC Realty & Development LLC

215 E. Irving Pk. Rd. Roselle IL 60172

Sale Price: \$975,000



PROPERTY INFORMATION

- ◆ Size: 105,415 SF
- ◆ Traffic Ct: 35K Per Day
- ◆ Frontage: 166 FT Gary
- ◆ Pins: 02-08-201-009
02-08-201-014
- ◆ Taxes: \$14,500
- ◆ Zoning: R

Unincorporated Dupage County

PROPERTY SUMMARY

2.4 Acres for sale for redevelopment in Dupage County Roselle. Currently R-1 but can easily be rezoned to B-2 for service type uses, outdoor storage, car sales, etc. Unique layout connecting Gary Ave and Virginia.



Brad Bullington

630-674-6989

brad@gcrealtyinc.com

bradbullington.com

GC Realty & Development LLC

215 E. Irving Pk. Rd. Roselle IL 60172