

For Sale

3035 East Avenue S, Palmdale, CA 93550



PROPERTY FEATURES

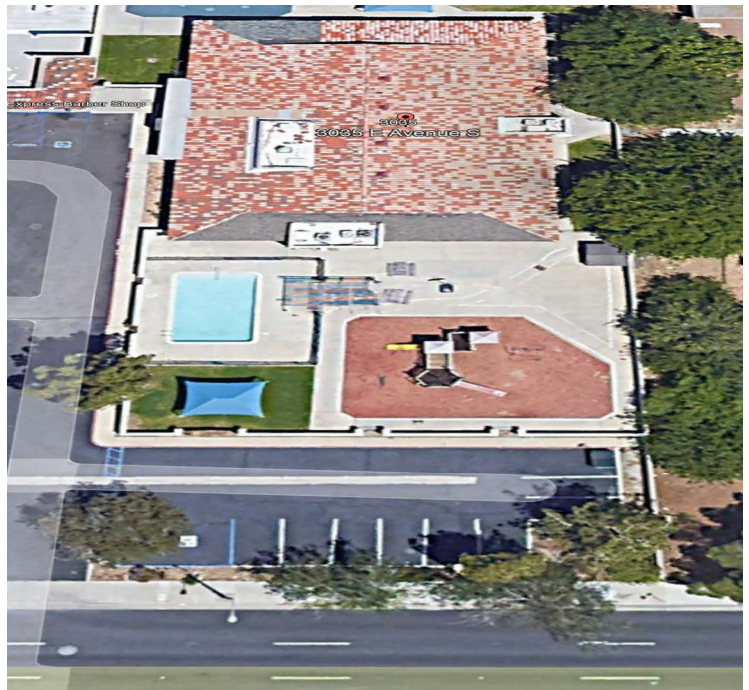
CURRENT SCHOOL

7,103 RSF available

Outstanding Demographics and traffic counts

Current day care/school on month-to-month.

Tenant would love to do a long term lease



DANNY RAFFLE CCIM

DRE # 01361833

424-281-3701

draffle@rpmres.com

RPM COMMERCIAL REAL ESTATE

525 S DOUGLAS STREET, SUITE 270

EL SEGUNDO, CA 90245

No warranty or representation is made as to the accuracy of the foregoing information. Terms of lease and availability are subject to change without notice. Reference to square footage are approximate.

For Sale

3035 East Avenue S, Palmdale, CA 93550

PROPERTY INFORMATION

ASKING: \$1,200,000	39.37/SF
Rentable square feet	7,103
Land square footage	30,481

Currently leased to A Caring Touch Christian Family Center
Use is a day care center with class rooms, kitchen, play area and swimming pool.
Tenant is on month-to-month lease. Is ready to sign a new lease agreement.

Located on main highway



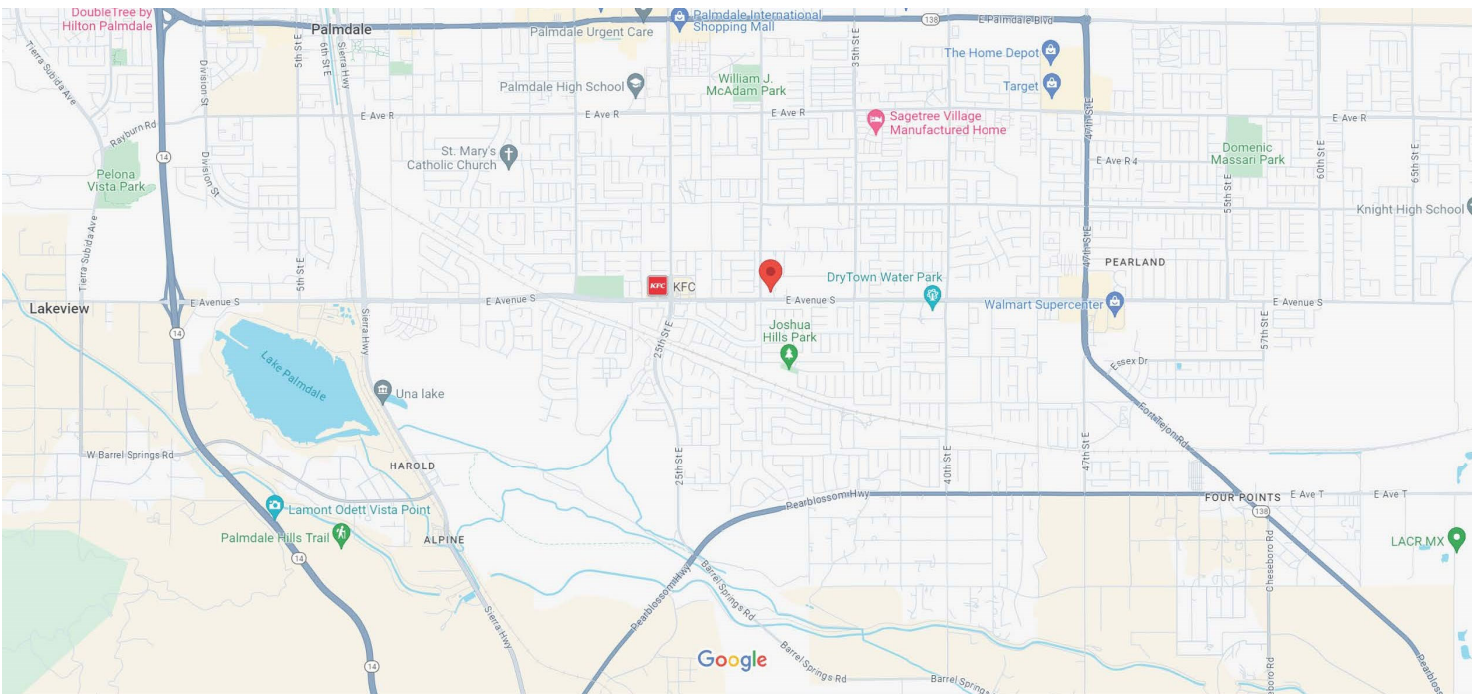
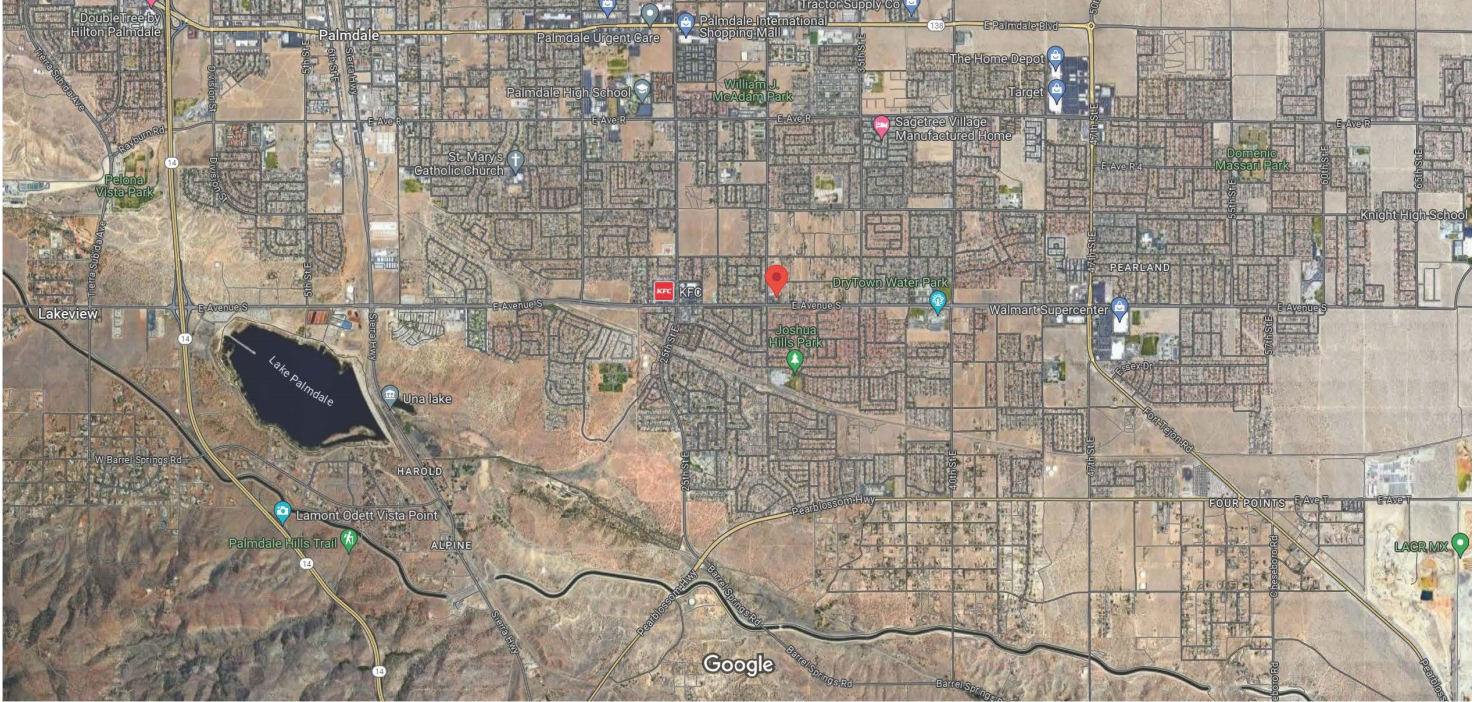
DANNY RAFFLE CCIM
DRE # 01361833
424-281-3701
draffle@rpmres.com

RPM COMMERCIAL REAL ESTATE
525 S DOUGLAS STREET, SUITE 270
EL SEGUNDO, CA 90245

No warranty or representation is made as to the accuracy of the foregoing information. Terms of lease and availability are subject to change without notice. Reference to square footage are approximate.

For Sale

3035 East Avenue S, Palmdale, CA 93550



DANNY RAFFLE CCIM
DRE # 01361833
424-281-3701
draffle@rpmres.com

RPM COMMERCIAL REAL ESTATE
525 S DOUGLAS STREET, SUITE 270
EL SEGUNDO, CA 90245

No warranty or representation is made as to the accuracy of the foregoing information. Terms of lease and availability are subject to change without notice. Reference to square footage are approximate.