

For Lease

CBRE

Sevastopol Station

1938 SE 6th Street | Des Moines, IA 50315 | www.cbre.com/desmoines



3 Months Rent Abatement offered on New 5-year Lease

Property Overview

Retail space is now available in this mixed-use building located at SE 6th Street and Hartford Avenue. This former nail salon space is ideal for many retail or office uses.

Available Space

- + Suite 105
- 1,327 SF

Lease Rate

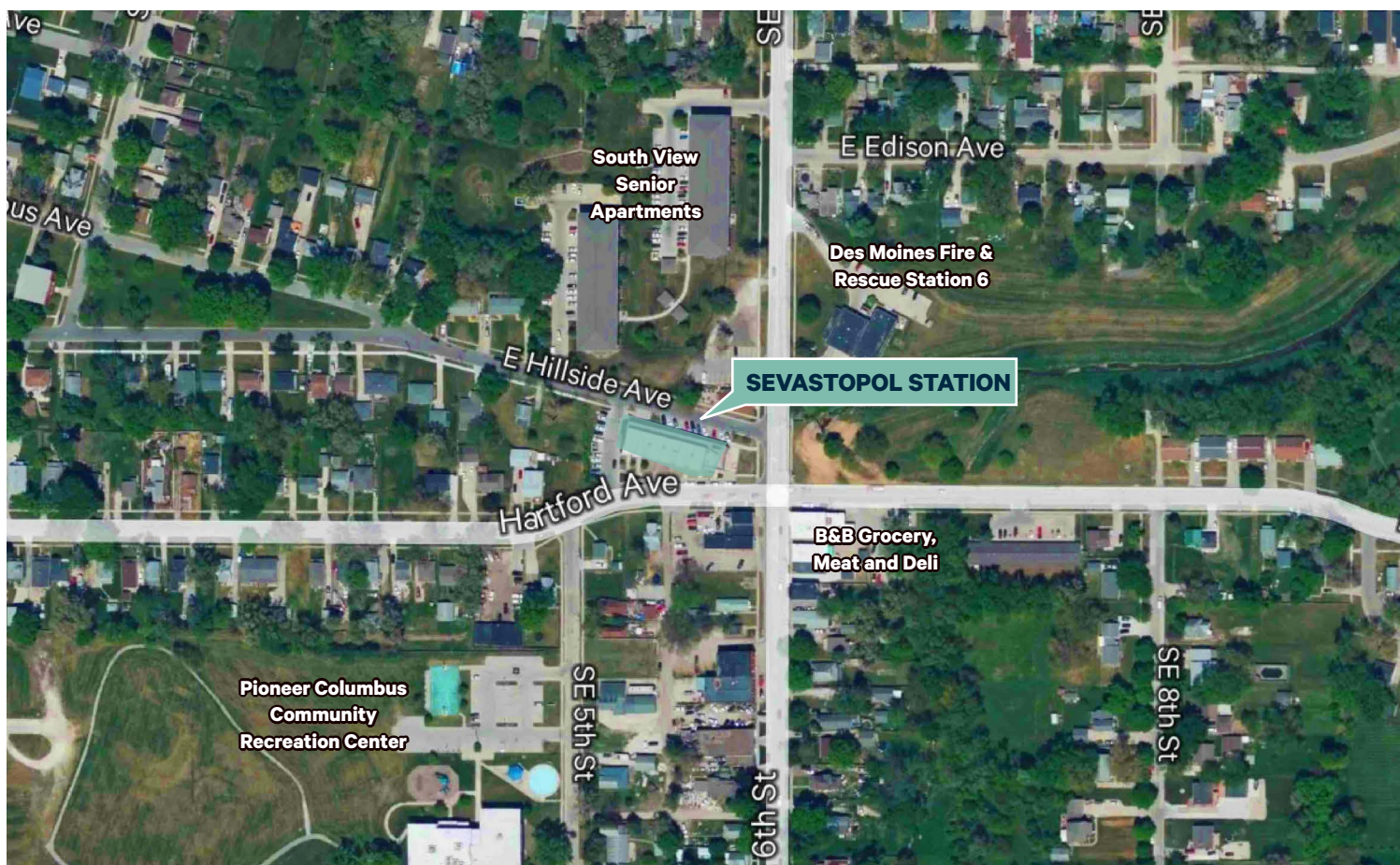
- + \$9.50/SF NNN
- + CAMIT: \$9.45/SF

Building Features

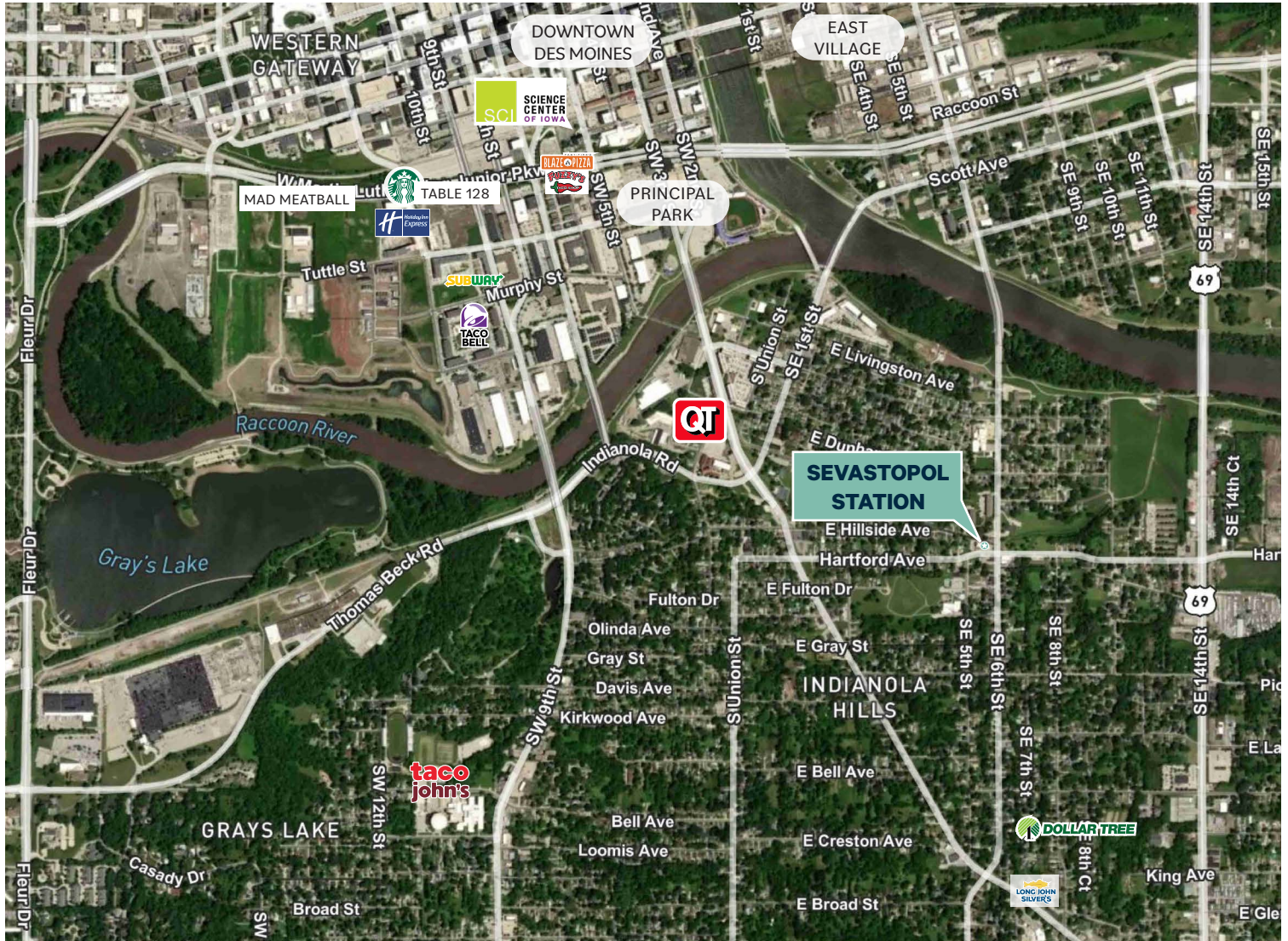
- + Finished retail space
- + Co-tenancy includes The Grateful Chef & La Baja Cocina Mexican Restaurant
- + Floor to ceiling windows
- + On-site parking and street parking
- + Located just few minutes south of East Village
- + 8,400 vehicles per day (SE 6th Street)

Sevastopol Station
1938 SE 6th Street | Des Moines, IA 50315

For Lease



Location



Contact Us

Bill Wright

Senior Vice President

+1 515 210 3050

bill.wright2@cbre.com

Licensed in the State of Iowa.

Chris Pendroy, CCIM, SIOR

Senior Vice President

+1 515 402 6600

chris.pendroy@cbre.com

Licensed in the State of Iowa.

Grant Wright, CCIM

Senior Vice President

+1 515 745 5113

grant.wright@cbre.com

Licensed in the State of Iowa.

Dakota Little

Senior Associate

+1 515 745 4378

dakota.little@cbre.com

Licensed in the State of Iowa.

© 2025 CBRE, Inc. All rights reserved. This information has been obtained from sources believed reliable but has not been verified for accuracy or completeness. CBRE, Inc. makes no guarantee, representation or warranty and accepts no responsibility or liability as to the accuracy, completeness, or reliability of the information contained herein. You should conduct a careful, independent investigation of the property and verify all information. Any reliance on this information is solely at your own risk. CBRE and the CBRE logo are service marks of CBRE, Inc. All other marks displayed on this document are the property of their respective owners, and the use of such marks does not imply any affiliation with or endorsement of CBRE. Photos herein are the property of their respective owners. Use of these images without the express written consent of the owner is prohibited.