



**SUBJECT  
PROPERTY**

**FOR SALE | MARINA & RESTAURANT**

**River's Edge Marina & Restaurant**  
**65 Lewis Blvd. St. Augustine, FL 32084**

**ST. JOHNS**  
COMMERCIAL PROPERTIES

Craig Cunningham, Broker  
6275 A1A S. Suite 102  
St. Augustine, FL 32080  
904-347-9272 mobile  
Craig@stjohnscp.net

The information is deemed reliable, but not guaranteed.

# PROPERTY SUMMARY

**ST. JOHNS**  
COMMERCIAL PROPERTIES

## **River's Edge Marina & Restaurant** **65 Lewis Blvd., St. Augustine, FL 32084**

**LIST PRICE: \$14,000,000**

**PROPERTY DESCRIPTION:** Located at ICW Mile Marker 780 On San Sebastian River at Green Marker 29, River's Edge Marina is located in the nation's oldest city. Nestled just west of the historic downtown area, this marina provides excellent protection and easy access to all of St. Augustine's amenities. Along with sightseeing downtown the marina's location is a ¼ mile away from Sailor's Exchange, West Marine and groceries. There is a restaurant on site: Hurricane Patty's. River's Edge Marina has a knowledgeable staff and beautiful views that make this marina exceptional business ownership opportunity.

### **DOCK SIZES & AMENITIES:**

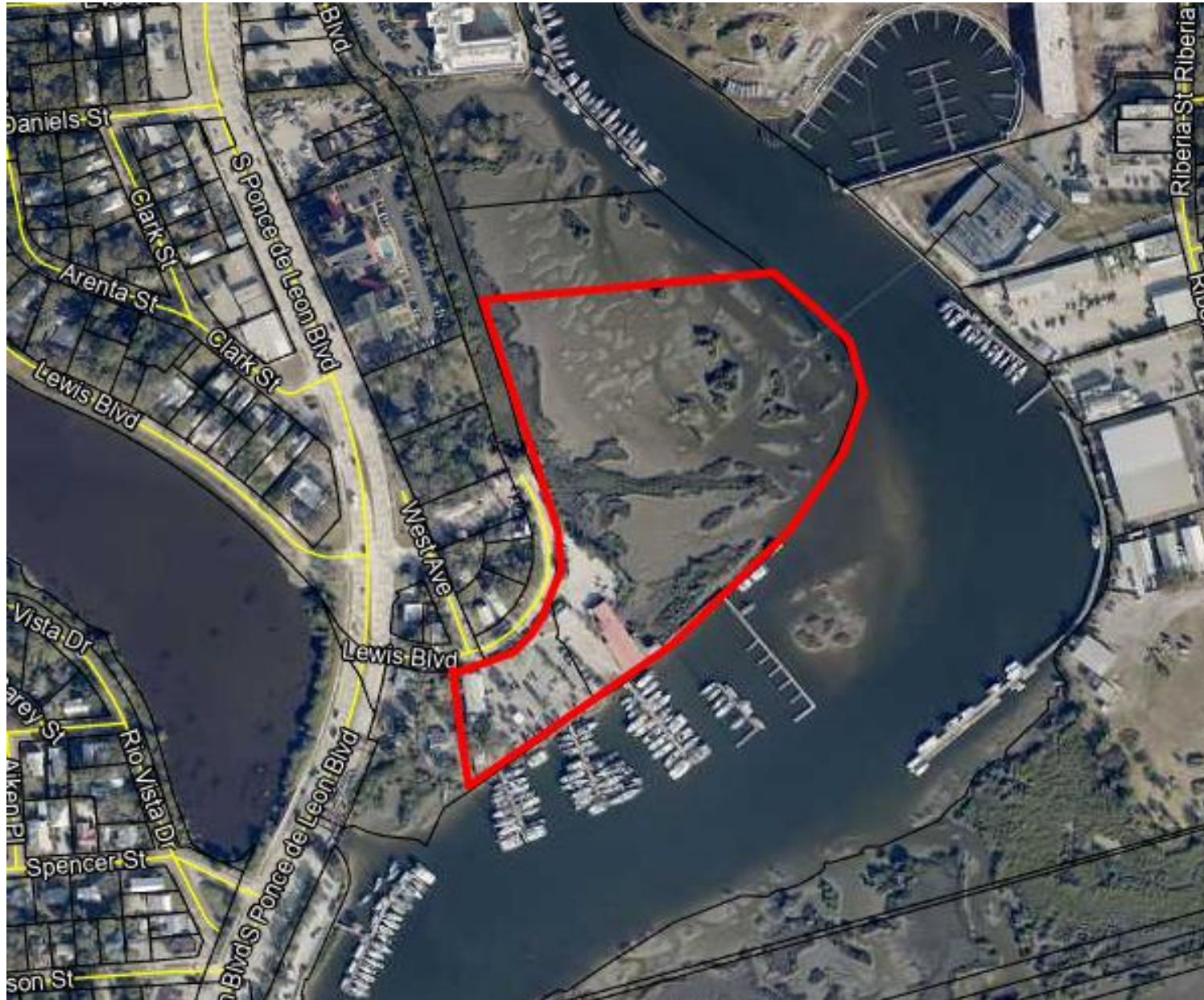
- Floating docks (depths 6 - 8 1/2' MLW)
- 100 wet slips / accommodates vessels up to 120 ft.
- Air-conditioned shower facilities
- Onsite coin laundry
- Patio area with grills and fire pit
- Cable TV available for long term
- 30/50/100 Amp electrical
- Over 150 parking spaces
- Complementary Wi-Fi internet
- Fuel truck on call at street prices (24-hour notice M-F)
- On call pump-out
- West Marine 1/4 mile
- Short walk to downtown, entertainment, and historic sites.
- BoatUS, AGLCA, and MTOA Participating Marina
- On-Site Restaurant: Hurricane Patty's Bar & Grill



# PROPERTY

## River's Edge Marina & Restaurant 65 Lewis Blvd, St. Augustine, FL 32084

**ST. JOHNS**  
COMMERCIAL PROPERTIES



St. Johns Commercial Properties | 6275 A1A S. Suite 102, St. Augustine, FL 32080 | 904-347-9272

The information is deemed reliable, but not guaranteed.





**River's Edge Marina & Restaurant**  
**65 Lewis Blvd,**  
**St. Augustine, FL 32084**

**ST. JOHNS**  
COMMERCIAL PROPERTIES



St. Johns Commercial Properties | 6275 A1A S. Suite 102, St. Augustine, FL 32080 | 904-347-9272

The information is deemed reliable, but not guaranteed.





**River's Edge Marina & Restaurant**  
**65 Lewis Blvd,**  
**St. Augustine, FL 32084**



St. Johns Commercial Properties | 6275 A1A S. Suite 102, St. Augustine, FL 32080 | 904-347-9272

The information is deemed reliable, but not guaranteed.





**River's Edge Marina and Restaurant**  
**65 Lewis Blvd,**  
**St. Augustine, FL 32084**

**ST. JOHNS**  
COMMERCIAL PROPERTIES



St. Johns Commercial Properties | 6275 A1A S. Suite 102, St. Augustine, FL 32080 | 904-347-9272

The information is deemed reliable, but not guaranteed.





**River's Edge Marina and Restaurant**  
**65 Lewis Blvd,**  
**St. Augustine, FL 32084**

**ST. JOHNS**  
COMMERCIAL PROPERTIES



**RESTAURANT & BAR**



St. Johns Commercial Properties | 6275 A1A S. Suite 102, St. Augustine, FL 32080 | 904-347-9272

The information is deemed reliable, but not guaranteed.