

LAND | 3333 N FRONTAGE RD, BILLINGS, MT 59101



**FOR SALE**



## Property Highlights

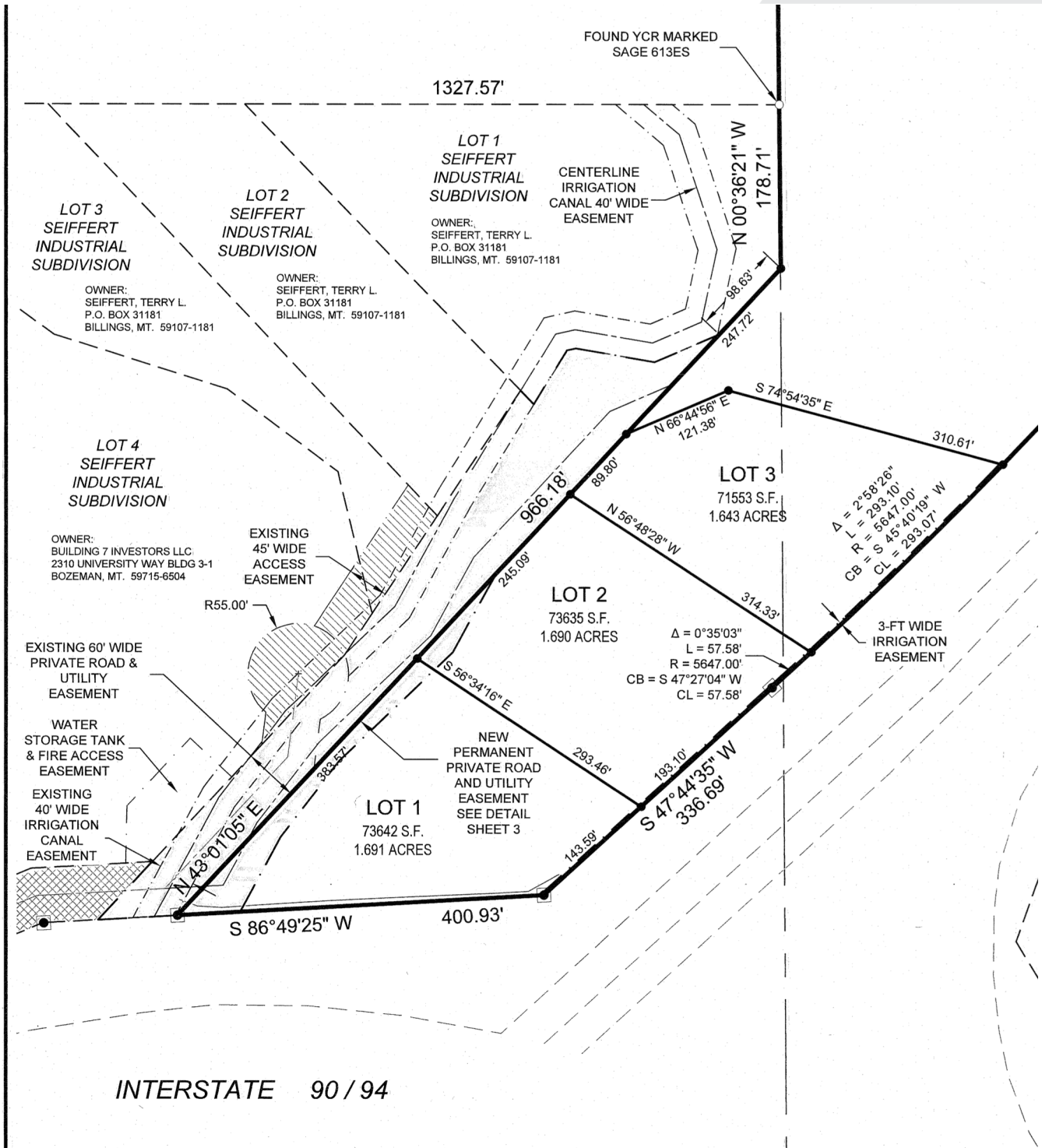
- Light Industrial Zoning (I1) Outside City Limits
- Subdivision access to 40,00 gallon dry hydrant
- Security gate located at subdivision entrance
- Irrigation ditch access easement
- Utilities: Gas/Electric/Internet

## Property Description

Sale consists of 5 lots totaling 9.181 Acres located on N Frontage Rd in Billings, MT. Located at the junction of I-90 and I-94 just one mile from the Johnson Lane Exit, and the future Billings Bypass. Excellent visibility and exposure from both interstate directions. Ideal location for an industrial user seeking convenient interstate access with a secure gated premises. Lots can be purchased separately.

## OFFERING SUMMARY

Total Parcel Size:	9.181 Acres
Lot 1: 1.691 Acres	\$295,000
Lot 2: 1.69 Acres	\$295,000
Lot 3: 1.643 Acres	\$287,000
Lot 4: 1.909 Acres	\$285,000
Lot 5: 2.248 Acres	\$335,000



Jake Hedge, CCIM

Broker | 406.696.0395

jhedge@naibusinessproperties.com

**NAI Business Properties**

<https://www.naibusinessproperties.com>

NO WARRANTY OR REPRESENTATION, EXPRESS OR IMPLIED, IS MADE AS TO THE ACCURACY OF THE INFORMATION CONTAINED HEREIN, AND THE SAME IS SUBMITTED SUBJECT TO ERRORS, OMISSIONS, CHANGE OF PRICE, RENTAL OR OTHER CONDITIONS, PRIOR SALE, LEASE OR FINANCING, OR WITHDRAWAL WITHOUT NOTICE, AND OF ANY SPECIAL LISTING CONDITIONS IMPOSED BY OUR PRINCIPALS NO WARRANTIES OR REPRESENTATIONS ARE MADE AS TO THE CONDITION OF THE PROPERTY OR ANY HAZARDS CONTAINED THEREIN ARE ANY TO BE IMPLIED.



LAND | 3333 N FRONTAGE RD, BILLINGS, MT 59101

**FOR SALE**

