



 **Ready for Occupancy!**

For Lease

Steve Foster
+1 208 472 2834
steve.foster@colliers.com

Michael McNeight
+1 208 472 2865
michael.mcneight@colliers.com

Chloe Industrial Park - Bldg. C 1586 N. Debra Drive | Nampa, ID

Highlights:

- New listing for lease
- +/- 4,800 SF
- Yard space available
- Central Treasure Valley location
- Steel/frame/metal siding construction
- Grade level loading
- Automatic door openers
- 18' to 20' clear height
- 600 amps, 208 volts, single phase
- Multiple meters in each building

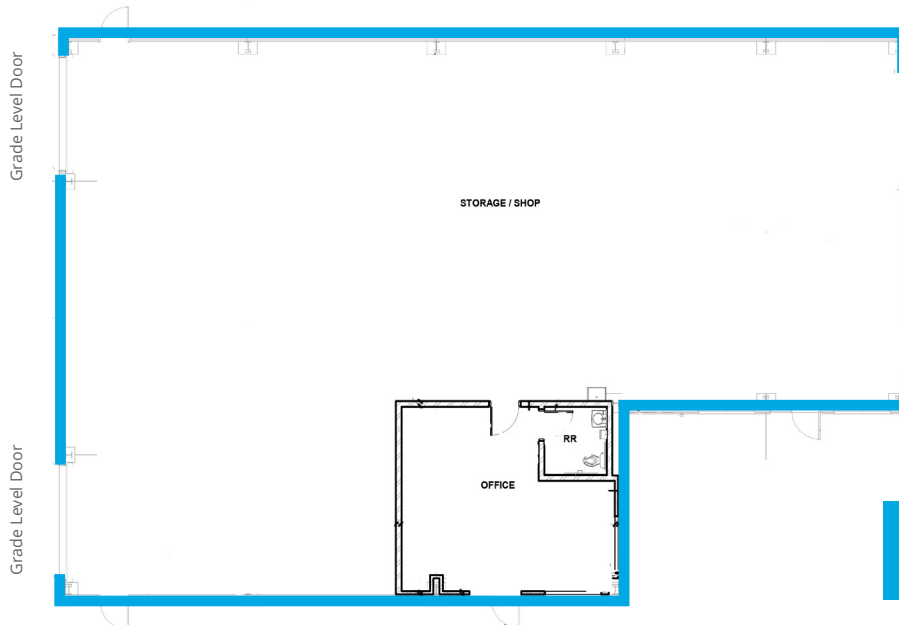
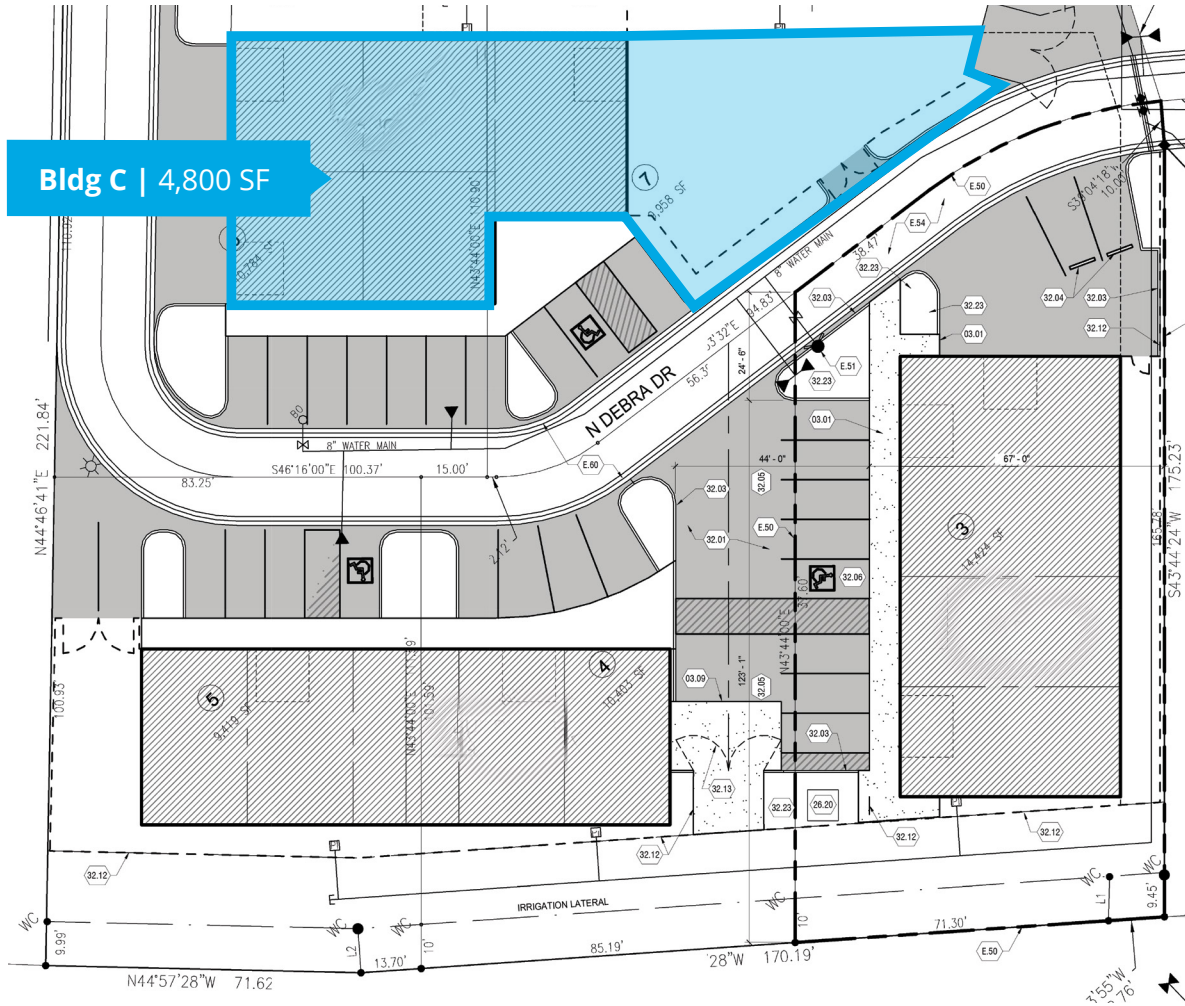
Building Size	Lease Rate
4,800 SF	\$1.15 PSF NNN

755 West Front Street, Suite 300
Boise, Idaho 83702
+1 208 345 9000
colliers.com/idaho

Site Plan - Building C

Building Size: 4,800 SF
Lease Rate: \$1.15 PSF NNN

Bldg C | 4,800 SF



Bldg C - Floor Plan

Property Gallery



Location

 Google Map

 Street View



755 West Front Street, Suite 300
 Boise, Idaho 83702
 +1 208 345 9000
 colliers.com/idaho

This document has been prepared by Colliers for advertising and general information only. Colliers makes no guarantees, representations or warranties of any kind, expressed or implied, regarding the information including, but not limited to, warranties of content, accuracy and reliability. Any interested party should undertake their own inquiries as to the accuracy of the information. Colliers excludes unequivocally all inferred or implied terms, conditions and warranties arising out of this document and excludes all liability for loss and damages arising there from. This publication is the copyrighted property of Colliers and/or its licensor(s). © 2026. All rights reserved. This communication is not intended to cause or induce breach of an existing listing agreement. Colliers Paragon, LLC.