

# COCCA DEVELOPMENT

## RETAIL SPACE FOR LEASE

**30 EAST LIBERTY STREET**

HUBBARD, OH 44425



- Join Dollar Tree in the nearly 12,000 sq ft building located on East Liberty Street (Rt. 304) near the intersection of Rt. 62 (North Main Street)
- Ideally located next to the U.S. Post Office and across from Walgreens and Snap Fitness
- Approximately 8,000 cars pass by site along Rt. 304 and 11,000 on Rt. 62 to the north and 10,000 on Rt. 616 to the south

### AVAILABLE SUITE AREA—\$8/square foot NNN:

Approximately 3,306 square feet\*

\* May be divided per space needs

NNN: Base rent plus prorata share of Real Estate Taxes, Insurance, and Common Area expenses, including but not limited to snow removal, lawn care, and parking lot maintenance. Tenant pays separately metered utilities for gas, electric, water, sewer, & trash removal.

**CALL 330-729-1010 FOR MORE INFORMATION**

**[www.coccadevelopment.com](http://www.coccadevelopment.com)**

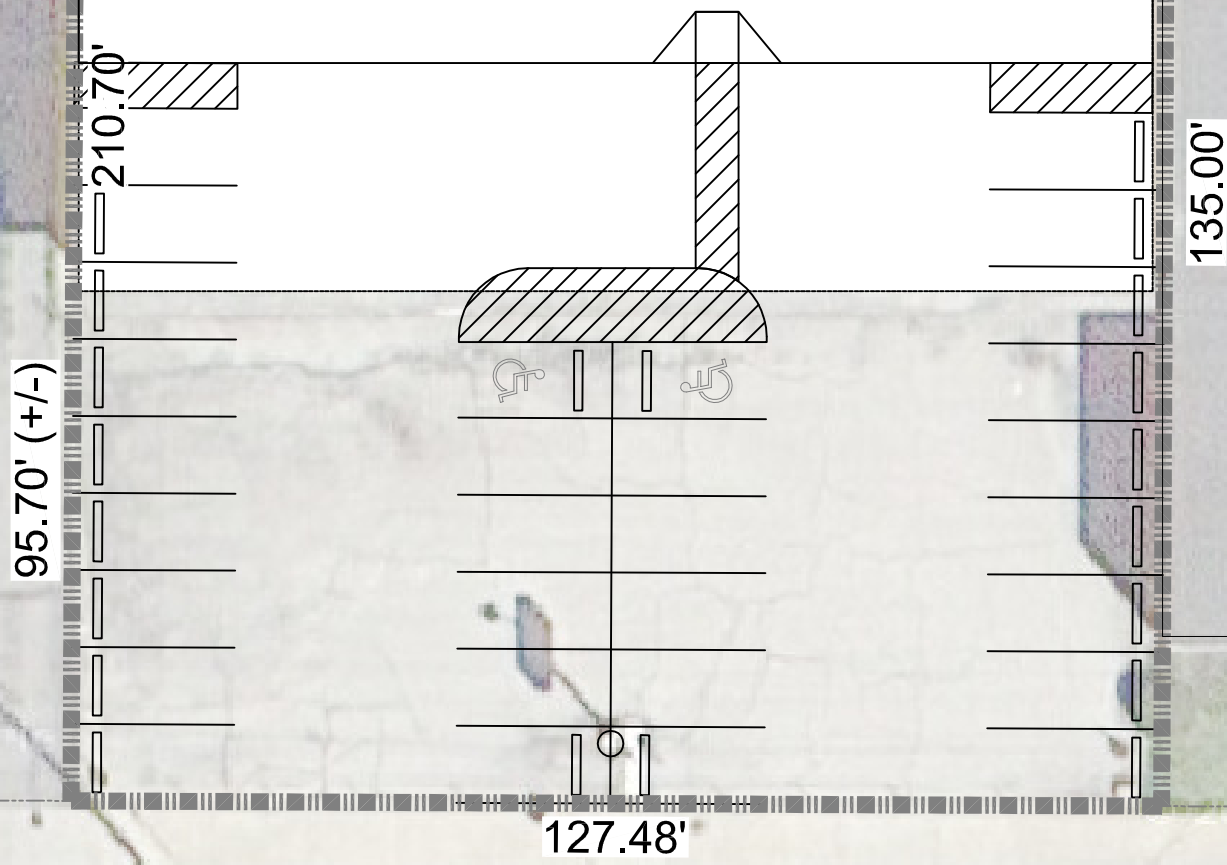
NOTE:  
DIMENSIONS SHOWN FOR VACANT/AVAILABLE  
SPACES ARE APPROXIMATE & WOULD NEED TO  
BE FIELD VERIFIED PRIOR TO LEASING  
11-30-15

**DELIVERY AREA**



**DOLLAR TREE**  
HUBBARD, OH  
8,501 S.F.

AVAILABLE  
SPACE  
3,306 S.F.



**EAST LIBERTY STREET**

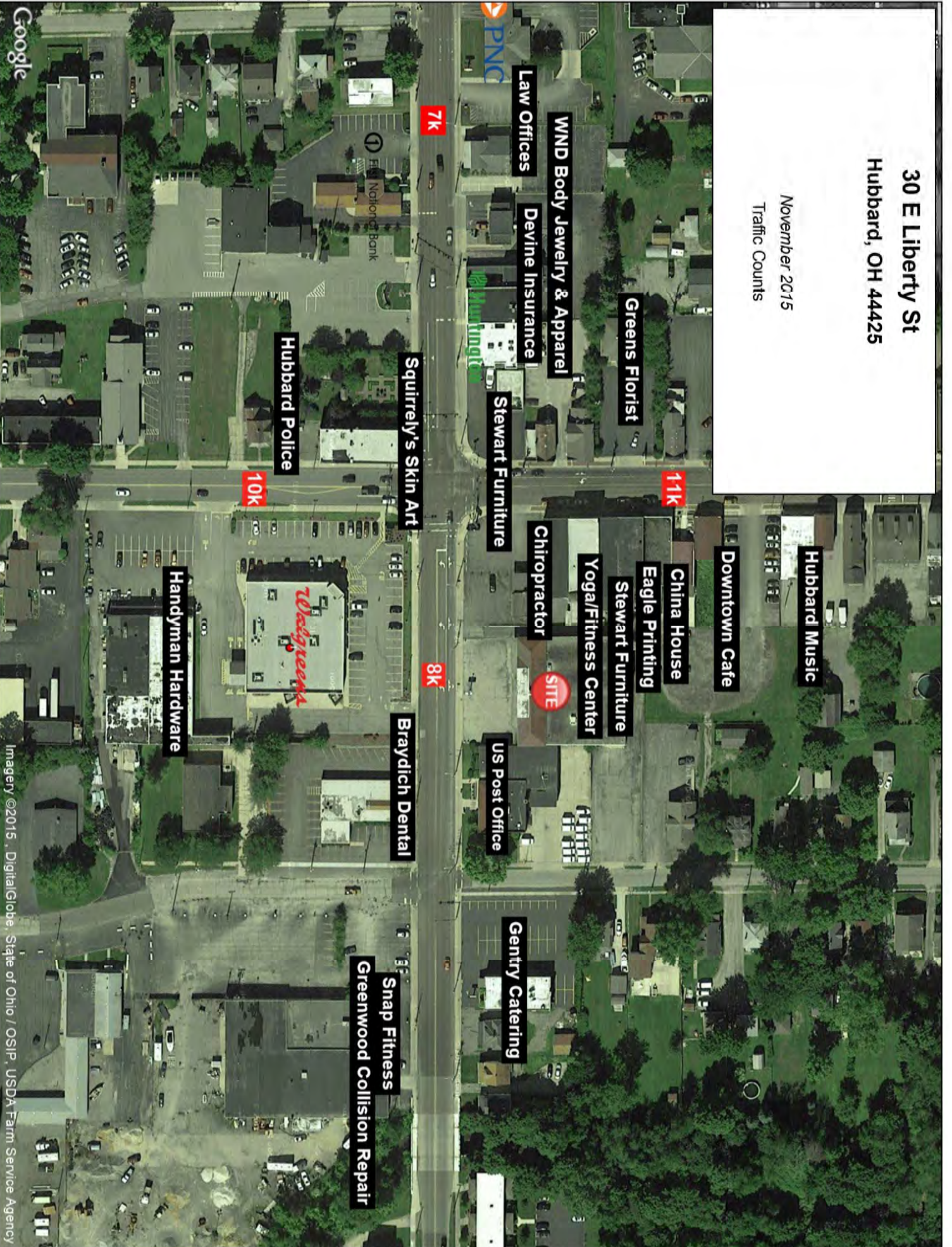
E Liberty St

Community Medical



**30 E Liberty St  
Hubbard, OH 44425**

November 2015  
Traffic Counts



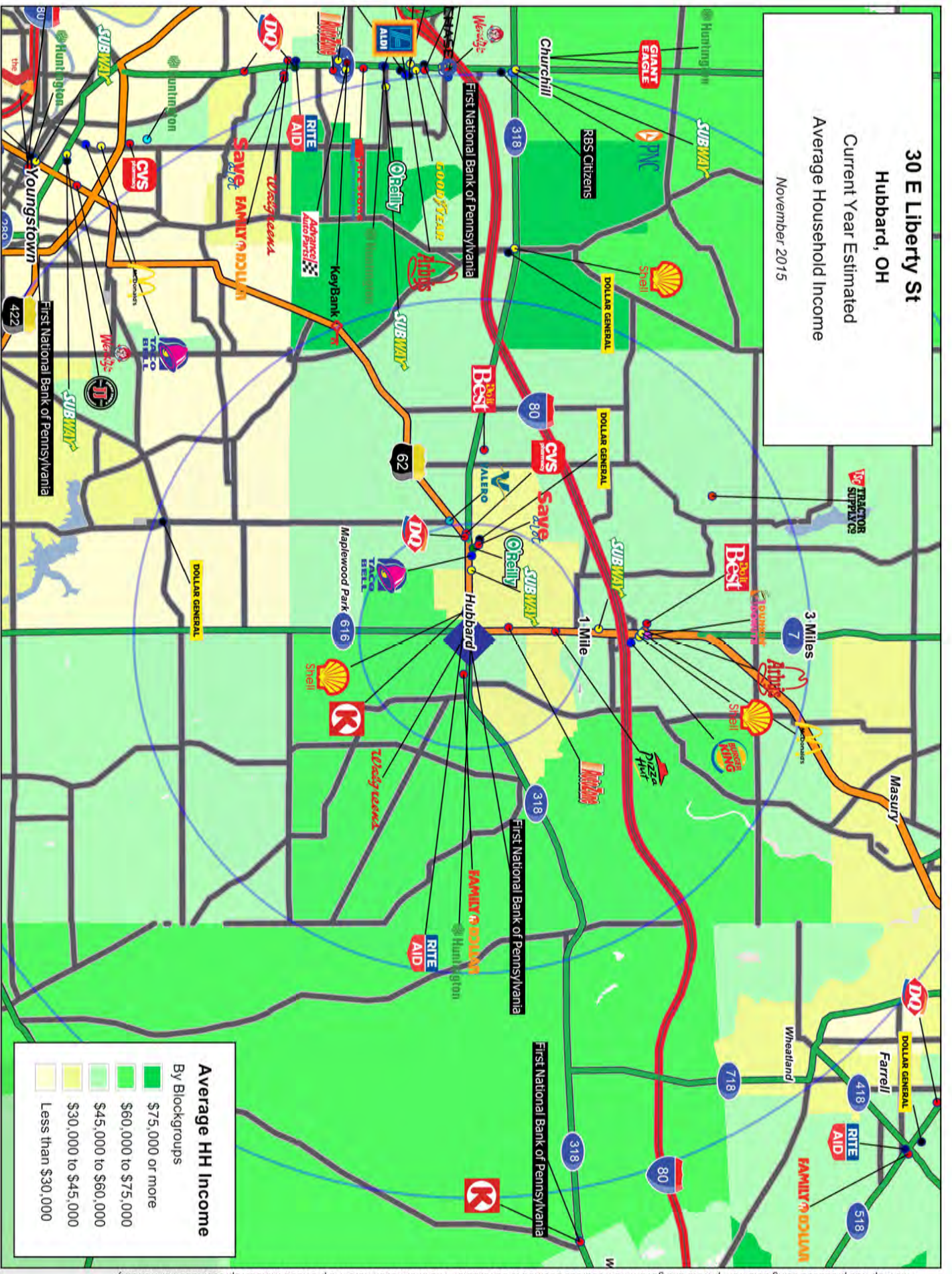
Google

This map was produced using data from private and government sources deemed to be reliable. The information herein is provided without representation or warranty.

Imagery ©2015, DigitalGlobe, State of Ohio / OSIP, USDA Farm Service Agency



**30 E Liberty St**  
**Hubbard, OH**  
 Current Year Estimated  
 Average Household Income  
 November 2015



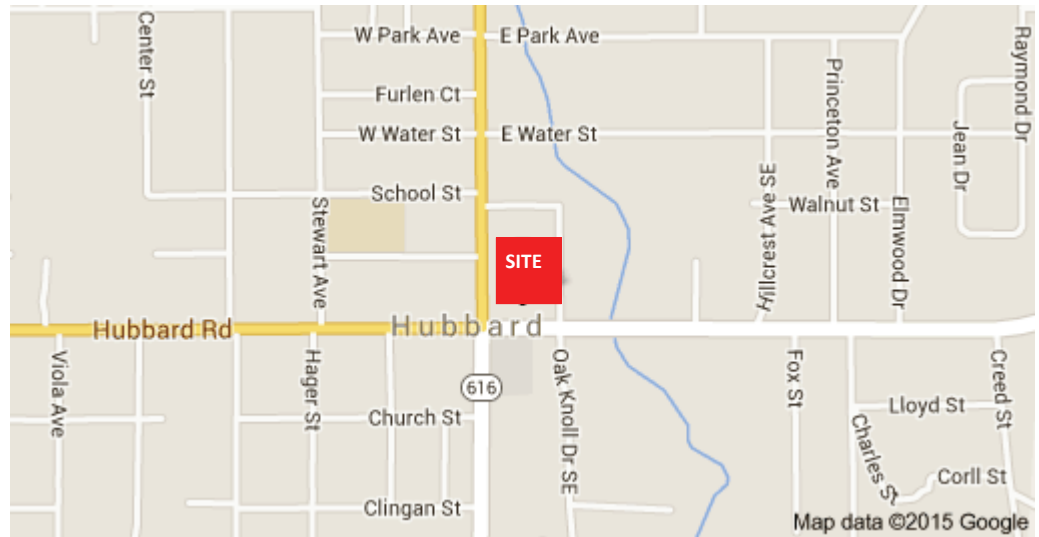
**Average HH Income**  
 By Blockgroups

<span style="display:inline-block; width:15px; height:15px; background-color:#008000;"></span>	\$75,000 or more
<span style="display:inline-block; width:15px; height:15px; background-color:#00C000;"></span>	\$60,000 to \$75,000
<span style="display:inline-block; width:15px; height:15px; background-color:#90EE90;"></span>	\$45,000 to \$60,000
<span style="display:inline-block; width:15px; height:15px; background-color:#FFFF00;"></span>	\$30,000 to \$45,000
<span style="display:inline-block; width:15px; height:15px; background-color:#FFD700;"></span>	Less than \$30,000

This map was produced using data from private and government sources deemed to be reliable. The information herein is provided without representation or warranty.

# 30 East Liberty Street    Hubbard, OH 44425

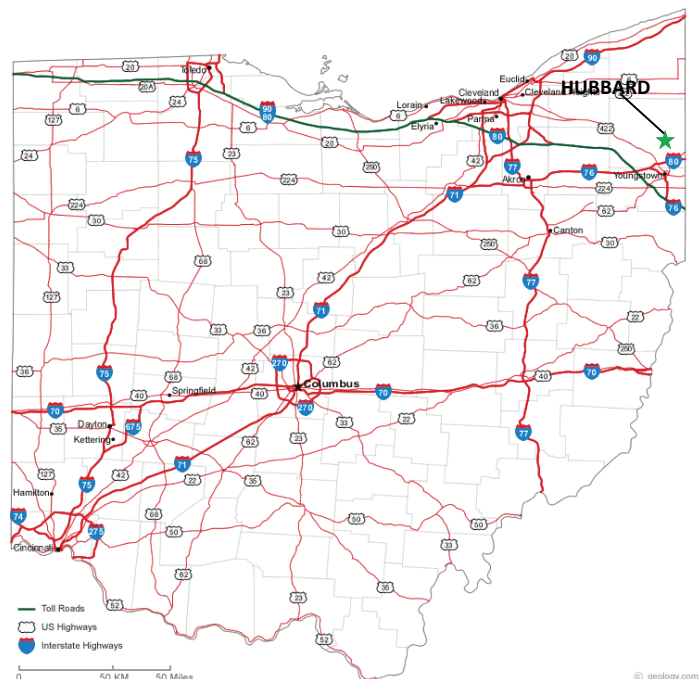
The site is ideally located on East Liberty Street, approximately 1.7 miles south of I-80 ramps toward Cleveland and Pittsburgh, 6.3



miles east of West Middlesex, PA and 7.7 miles southwest of Sharon, PA. Conveniently located near Liberty, Masury, Brookfield, Lowellville, Campbell, and Struthers—all within a 15 minute or less drive.

The City of Hubbard operates its own electrical distribution systems throughout the city and portions of Hubbard Township. Although it does not generate its own power, it is primarily responsible for electric transmission and all utility poles, lines, substations, and connections within its geographic service area, thus affording consumers lower rates than those charged in several neighboring communities.

Average daily traffic past site is 8,000 cars and approximately 2,257 people per square mile in residence.





# COCCA DEVELOPMENT, LTD

**30 East Liberty Street    Hubbard, OH 44425**

## **AT A GLANCE**

- ◆ Hubbard is a city in Trumbull County, Ohio, United States. It is formed from part of Hubbard Township, which was founded in 1795 by Nehemiah Hubbard, Jr., an energetic and respected merchant from Middletown, Connecticut.
- ◆ Until 1861 Hubbard remained a country-crossroads with relatively few houses or inhabitants; however, when the coal fields began to develop, the corners rapidly became a village. The increase in population was due for the most part to the emigration of people from Europe, people in search of the opportunity of a better way of life.
- ◆ By 1868 the village had attained the required population and it became an incorporated municipality
- ◆ 18.6% Italian ancestry followed by 16.7% German

# GRAPHIC PROFILE

2000-2010 Census, 2014 Estimates with 2019 Projections

Calculated using Proportional Block Groups

Lat/Lon: 41.1568/-80.5680

RGRAP3

## 30 E Liberty St

## Hubbard, OH

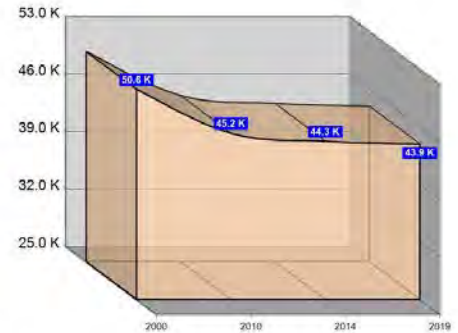
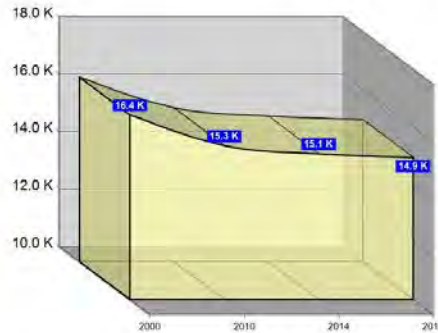
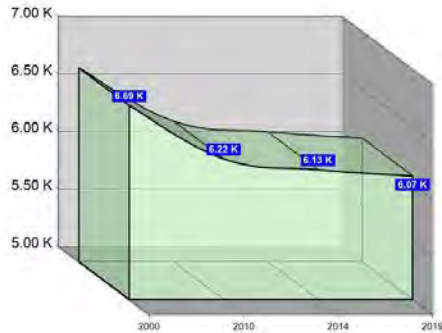
1 Mile

3 Miles

5 Miles

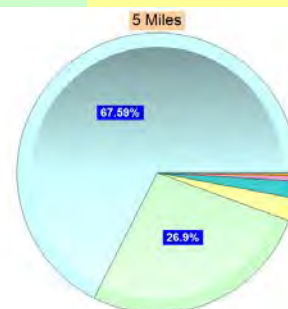
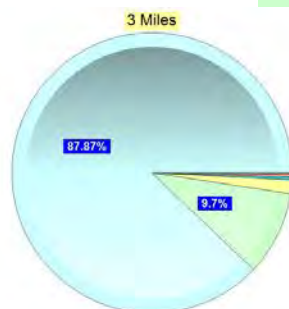
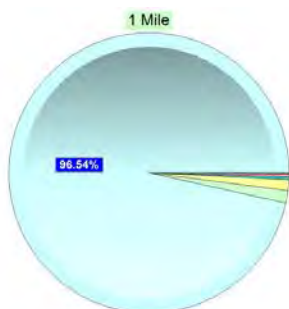
### Population

Estimated Population (2014)	6,127	15,069	44,263
Projected Population (2019)	6,073	14,937	43,915
Census Population (2010)	6,221	15,347	45,248
Census Population (2000)	6,686	16,419	50,593
Projected Annual Growth (2014-2019)	-54 -0.2%	-132 -0.2%	-349 -0.2%
Historical Annual Growth (2010-2014)	-94 -1.9%	-278 -1.7%	-985 -3.0%
Historical Annual Growth (2000-2010)	-465 -0.7%	-1,072 -0.7%	-5,344 -1.1%
Estimated Population Density (2014)	1,952 <i>psm</i>	533 <i>psm</i>	564 <i>psm</i>
Trade Area Size	3.1 <i>sq mi</i>	28.3 <i>sq mi</i>	78.5 <i>sq mi</i>



### Race and Ethnicity (2014)

Not Hispanic or Latino Population	6,036	98.5%	14,780	98.1%	41,369	93.5%
White	5,853	97.0%	13,072	88.4%	28,571	69.1%
Black or African American	86	1.4%	1,435	9.7%	11,486	27.8%
American Indian or Alaska Native	5	0.1%	18	0.1%	91	0.2%
Asian	19	0.3%	43	0.3%	275	0.7%
Hawaiian or Pacific Islander	3	0.1%	6	-	16	-
Other Race	3	-	5	-	46	0.1%
Two or More Races	67	1.1%	201	1.4%	883	2.1%
Hispanic or Latino Population	91	1.5%	289	1.9%	2,895	6.5%
White	62	68.2%	169	58.5%	1,346	46.5%
Black or African American	2	1.8%	32	11.0%	408	14.1%
American Indian or Alaska Native	1	0.7%	1	0.5%	29	1.0%
Asian	-	-	-	-	6	0.2%
Hispanic Hawaiian or Pacific Islander	-	-	-	-	7	0.2%
Other Race	18	19.6%	49	16.9%	822	28.4%
Two or More Races	9	9.6%	38	13.1%	277	9.6%



White Black or African American American Indian or Alaska Native Asian Hawaiian or Pacific Islander Other Race 2+ Races

This report was produced using data from private and government sources deemed to be reliable. The information herein is provided without representation or warranty.

# GRAPHIC PROFILE

2000-2010 Census, 2014 Estimates with 2019 Projections

Calculated using Proportional Block Groups

Lat/Lon: 41.1568/-80.5680

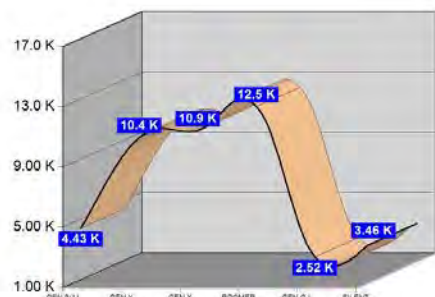
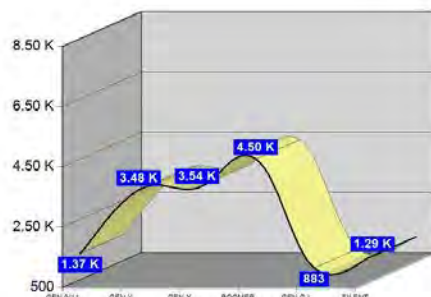
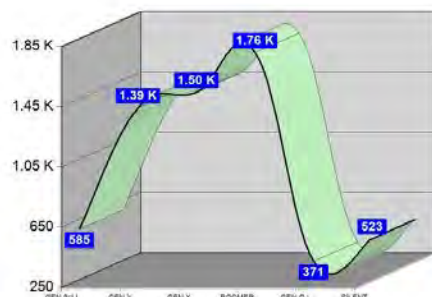
RGRAP3

## 30 E Liberty St Hubbard, OH

	1 Mile	3 Miles	5 Miles
<b>Age Distribution (2014)</b>			
Age Under 5 Years	277 4.5%	628 4.2%	2,150 4.9%
Age 5 to 9 Years	309 5.0%	741 4.9%	2,279 5.1%
Age 10 to 14 Years	352 5.7%	857 5.7%	2,450 5.5%
Age 15 to 19 Years	404 6.6%	948 6.3%	2,808 6.3%
Age 20 to 24 Years	411 6.7%	939 6.2%	3,039 6.9%
Age 25 to 29 Years	329 5.4%	797 5.3%	2,610 5.9%
Age 30 to 34 Years	329 5.4%	779 5.2%	2,571 5.8%
Age 35 to 39 Years	321 5.2%	795 5.3%	2,484 5.6%
Age 40 to 44 Years	349 5.7%	899 6.0%	2,581 5.8%
Age 45 to 49 Years	393 6.4%	1,010 6.7%	2,811 6.4%
Age 50 to 54 Years	460 7.5%	1,224 8.1%	3,410 7.7%
Age 55 to 59 Years	471 7.7%	1,239 8.2%	3,470 7.8%
Age 60 to 64 Years	455 7.4%	1,122 7.4%	3,172 7.2%
Age 65 to 69 Years	373 6.1%	919 6.1%	2,446 5.5%
Age 70 to 74 Years	293 4.8%	738 4.9%	1,937 4.4%
Age 75 to 79 Years	230 3.8%	552 3.7%	1,527 3.4%
Age 80 to 84 Years	186 3.0%	453 3.0%	1,202 2.7%
Age 85 Years or Over	185 3.0%	430 2.9%	1,316 3.0%
Median Age	43.5	44.6	42.7

	1 Mile	3 Miles	5 Miles
<b>Generation (2014)</b>			
Generation 9/11 Millennials (Age Under 10 Years)	585 9.6%	1,369 9.1%	4,429 10.0%
Gen Y to Echo Boomers (Age 10 to 29 Years)	1,496 24.4%	3,540 23.5%	10,908 24.6%
Gen Xers (Age 30 to 49 Years)	1,393 22.7%	3,483 23.1%	10,447 23.6%
Baby Boomers (Age 50 to 69 Years)	1,759 28.7%	4,504 29.9%	12,498 28.2%
Silent Generation (Age 70 to 79 Years)	523 8.5%	1,291 8.6%	3,463 7.8%
G.I. Generation (Age 80 Years or Over)	371 6.1%	883 5.9%	2,518 5.7%

This report was produced using data from private and government sources deemed to be reliable. The information herein is provided without representation or warranty.





# GRAPHIC PROFILE

2000-2010 Census, 2014 Estimates with 2019 Projections

Calculated using Proportional Block Groups

Lat/Lon: 41.1568/-80.5680

RGRAP3

## 30 E Liberty St

## Hubbard, OH

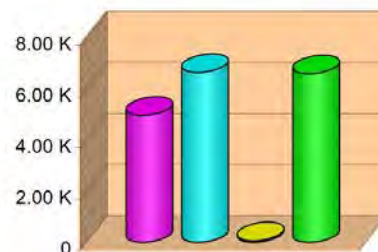
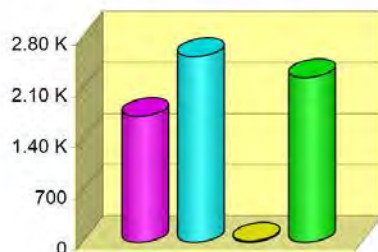
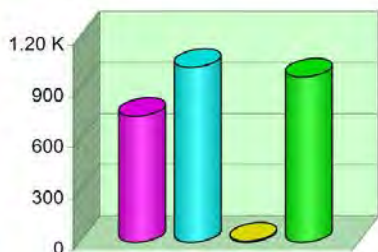
1 Mile

3 Miles

5 Miles

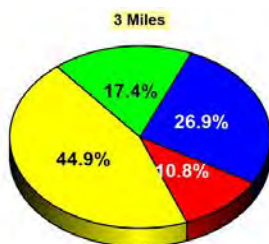
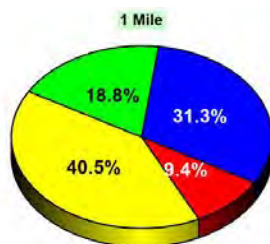
### Household Type (2014)

	1 Mile	3 Miles	5 Miles
Total Households	2,741	6,536	18,252
Family Households	1,765 37.4%	4,265 38.9%	11,606 36.4%
Family Households with Children	739 41.9%	1,723 40.4%	4,965 42.8%
Family Households No Children	1,026 58.1%	2,542 59.6%	6,641 57.2%
Non-Family Households	976 37.4%	2,271 38.9%	6,647 36.4%
Non-Family Households with Children	7 0.7%	17 0.7%	59 0.9%
Non-Family Households No Children	969 99.3%	2,254 99.3%	6,587 99.1%



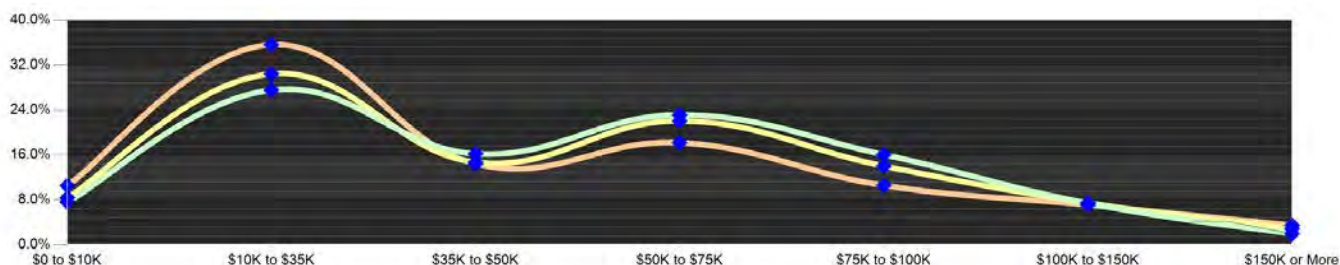
### Education Attainment (2014)

	1 Mile	3 Miles	5 Miles
Elementary or Some High School	413 9.4%	1,153 10.8%	3,710 12.8%
High School Graduate	1,774 40.5%	4,791 44.9%	12,700 43.8%
Some College or Associate Degree	1,368 31.3%	2,872 26.9%	7,677 26.5%
Bachelor or Graduate Degree	821 18.8%	1,856 17.4%	4,927 17.0%



### Household Income (2014)

	1 Mile	3 Miles	5 Miles
Estimated Average Household Income	\$47,927	\$48,678	\$46,493
Estimated Median Household Income	\$46,055	\$43,577	\$39,262
HH Income Under \$10,000	209 7.6%	548 8.4%	1,924 10.5%
HH Income \$10,000 to \$34,999	756 27.6%	1,991 30.5%	6,507 35.7%
HH Income \$35,000 to \$49,999	445 16.2%	961 14.7%	2,634 14.4%
HH Income \$50,000 to \$74,999	634 23.1%	1,443 22.1%	3,323 18.2%
HH Income \$75,000 to \$99,999	203 7.4%	488 7.5%	1,297 7.1%
HH Income \$100,000 to \$149,999	203 7.4%	488 7.5%	1,297 7.1%
HH Income \$150,000 or More	54 2.0%	187 2.9%	635 3.5%



This report was produced using data from private and government sources deemed to be reliable. The information herein is provided without representation or warranty.

# EXPANDED PROFILE

2000-2010 Census, 2014 Estimates with 2019 Projections

Calculated using Proportional Block Groups

Lat/Lon: 41.1568/-80.5680

RF5

30 E Liberty St Hubbard, OH	1 Mile	3 Miles	5 Miles
<b>Population</b>			
Estimated Population (2014)	6,127	15,069	44,263
Projected Population (2019)	6,073	14,937	43,915
Census Population (2010)	6,221	15,347	45,248
Census Population (2000)	6,686	16,419	50,593
Projected Annual Growth (2014 to 2019)	-54 -0.2%	-132 -0.2%	-349 -0.2%
Historical Annual Growth (2010 to 2014)	-94 -0.4%	-278 -0.5%	-985 -0.5%
Historical Annual Growth (2000 to 2010)	-465 -0.7%	-1,072 -0.7%	-5,344 -1.1%
Estimated Population Density (2014)	1,952 <i>psm</i>	533 <i>psm</i>	564 <i>psm</i>
Trade Area Size	3.14 <i>sq mi</i>	28.26 <i>sq mi</i>	78.49 <i>sq mi</i>
<b>Households</b>			
Estimated Households (2014)	2,741	6,536	18,252
Projected Households (2019)	2,784	6,638	18,551
Census Households (2010)	2,691	6,418	17,934
Census Households (2000)	2,759	6,526	19,546
Estimated Households with Children (2014)	746 27.2%	1,740 26.6%	5,024 27.5%
Estimated Average Household Size (2014)	2.24	2.26	2.26
<b>Average Household Income</b>			
Estimated Average Household Income (2014)	\$52,821	\$53,504	\$51,208
Projected Average Household Income (2019)	\$57,326	\$58,121	\$55,601
Estimated Average Family Income (2014)	\$64,632	\$65,652	\$61,934
<b>Median Household Income</b>			
Estimated Median Household Income (2014)	\$48,851	\$46,552	\$41,819
Projected Median Household Income (2019)	\$53,089	\$50,469	\$45,363
Estimated Median Family Income (2014)	\$62,993	\$61,123	\$53,861
<b>Per Capita Income</b>			
Estimated Per Capita Income (2014)	\$23,632	\$23,507	\$22,014
Projected Per Capita Income (2019)	\$26,280	\$26,173	\$24,504
Estimated Per Capita income 5 Year Growth	\$2,648 11.2%	\$2,666 11.3%	\$2,491 11.3%
Estimated Average Household Net Worth (2014)	\$329,564	\$345,225	\$332,258
<b>Daytime Demos (2014)</b>			
Total Businesses	248	547	1,530
Total Employees	1,720	4,795	18,326
Company Headquarter Businesses	2 0.7%	2 0.4%	6 0.4%
Company Headquarter Employees	26 1.5%	28 0.6%	1,815 9.9%
Employee Population per Business	6.9	8.8	12.0
Residential Population per Business	24.8	27.5	28.9

This report was produced using data from private and government sources deemed to be reliable. The information herein is provided without representation or warranty.



# EXPANDED PROFILE

2000-2010 Census, 2014 Estimates with 2019 Projections

Calculated using Proportional Block Groups

Lat/Lon: 41.1568/-80.5680

RF5

## 30 E Liberty St

## Hubbard, OH

### Race & Ethnicity

	1 Mile		3 Miles		5 Miles	
White (2014)	5,915	96.5%	13,241	87.9%	29,917	67.6%
Black or African American (2014)	88	1.4%	1,466	9.7%	11,894	26.9%
American Indian or Alaska Native (2014)	5	0.1%	20	0.1%	120	0.3%
Asian (2014)	19	0.3%	43	0.3%	281	0.6%
Hawaiian or Pacific Islander (2014)	3	0.1%	6	-	23	0.1%
Other Race (2014)	21	0.3%	54	0.4%	868	2.0%
Two or More Races (2014)	76	1.2%	239	1.6%	1,160	2.6%
Not Hispanic or Latino Population (2014)	6,036	98.5%	14,780	98.1%	41,369	93.5%
Hispanic or Latino Population (2014)	91	1.5%	289	1.9%	2,895	6.5%
Not Hispanic or Latino Population (2019)	5,967	98.2%	14,608	97.8%	40,840	93.0%
Hispanic or Latino Population (2019)	107	1.8%	329	2.2%	3,075	7.0%
Not Hispanic or Latino Population (2010)	6,142	98.7%	15,090	98.3%	42,345	93.6%
Hispanic or Latino Population (2010)	80	1.3%	256	1.7%	2,904	6.4%
Not Hispanic or Latino Population (2000)	6,656	99.5%	16,261	99.0%	49,208	97.3%
Hispanic or Latino Population (2000)	30	0.5%	158	1.0%	1,385	2.7%
Projected Hispanic Annual Growth (2014 to 2019)	15	3.4%	39	2.7%	180	1.2%
Historic Hispanic Annual Growth (2000 to 2014)	61	14.3%	132	6.0%	1,510	7.8%

### Age Distribution (2014)

Age Under 5	277	4.5%	628	4.2%	2,150	4.9%
Age 5 to 9 Years	309	5.0%	741	4.9%	2,279	5.1%
Age 10 to 14 Years	352	5.7%	857	5.7%	2,450	5.5%
Age 15 to 19 Years	404	6.6%	948	6.3%	2,808	6.3%
Age 20 to 24 Years	411	6.7%	939	6.2%	3,039	6.9%
Age 25 to 29 Years	329	5.4%	797	5.3%	2,610	5.9%
Age 30 to 34 Years	329	5.4%	779	5.2%	2,571	5.8%
Age 35 to 39 Years	321	5.2%	795	5.3%	2,484	5.6%
Age 40 to 44 Years	349	5.7%	899	6.0%	2,581	5.8%
Age 45 to 49 Years	393	6.4%	1,010	6.7%	2,811	6.4%
Age 50 to 54 Years	460	7.5%	1,224	8.1%	3,410	7.7%
Age 55 to 59 Years	471	7.7%	1,239	8.2%	3,470	7.8%
Age 60 to 64 Years	455	7.4%	1,122	7.4%	3,172	7.2%
Age 65 to 74 Years	666	10.9%	1,657	11.0%	4,383	9.9%
Age 75 to 84 Years	416	6.8%	1,005	6.7%	2,729	6.2%
Age 85 Years or Over	185	3.0%	430	2.9%	1,316	3.0%
Median Age	43.5		44.6		42.7	

### Gender Age Distribution (2014)

Female Population	3,205	52.3%	7,667	50.9%	22,048	49.8%
Age 0 to 19 Years	662	20.7%	1,566	20.4%	4,789	21.7%
Age 20 to 64 Years	1,788	55.8%	4,335	56.5%	12,445	56.4%
Age 65 Years or Over	755	23.6%	1,766	23.0%	4,814	21.8%
Female Median Age	45.2		46.4		44.5	
Male Population	2,922	47.7%	7,402	49.1%	22,215	50.2%
Age 0 to 19 Years	680	23.3%	1,607	21.7%	4,898	22.0%
Age 20 to 64 Years	1,731	59.2%	4,469	60.4%	13,703	61.7%
Age 65 Years or Over	512	17.5%	1,326	17.9%	3,614	16.3%
Male Median Age	41.2		42.7		40.6	

This report was produced using data from private and government sources deemed to be reliable. The information herein is provided without representation or warranty.

# EXPANDED PROFILE

2000-2010 Census, 2014 Estimates with 2019 Projections

Calculated using Proportional Block Groups

Lat/Lon: 41.1568/-80.5680

RF5

## 30 E Liberty St

## Hubbard, OH

### Household Income Distribution (2014)

	1 Mile		3 Miles		5 Miles	
HH Income \$200,000 or More	23	0.8%	60	0.9%	213	1.2%
HH Income \$150,000 to \$199,999	31	1.1%	128	2.0%	422	2.3%
HH Income \$100,000 to \$149,999	203	7.4%	488	7.5%	1,297	7.1%
HH Income \$75,000 to \$99,999	441	16.1%	918	14.0%	1,932	10.6%
HH Income \$50,000 to \$74,999	634	23.1%	1,443	22.1%	3,323	18.2%
HH Income \$35,000 to \$49,999	445	16.2%	961	14.7%	2,634	14.4%
HH Income \$25,000 to \$34,999	312	11.4%	753	11.5%	2,440	13.4%
HH Income \$15,000 to \$24,999	315	11.5%	853	13.0%	2,797	15.3%
HH Income Under \$15,000	338	12.3%	933	14.3%	3,195	17.5%
HH Income \$35,000 or More	1,776	64.8%	3,998	61.2%	9,821	53.8%
HH Income \$75,000 or More	697	25.4%	1,593	24.4%	3,864	21.2%

### Housing (2014)

	1 Mile		3 Miles		5 Miles	
Total Housing Units	2,885		7,024		20,761	
Housing Units Occupied	2,741	95.0%	6,536	93.1%	18,252	87.9%
Housing Units Owner-Occupied	1,959	71.4%	4,925	75.4%	12,527	68.6%
Housing Units, Renter-Occupied	783	28.6%	1,611	24.6%	5,726	31.4%
Housing Units, Vacant	143	5.0%	488	6.9%	2,508	12.1%

### Marital Status (2014)

	1 Mile		3 Miles		5 Miles	
Never Married	1,265	24.4%	3,538	27.5%	12,543	33.6%
Currently Married	2,578	49.7%	5,863	45.6%	14,763	39.5%
Separated	101	1.9%	440	3.4%	1,965	5.3%
Widowed	506	9.7%	1,213	9.4%	3,040	8.1%
Divorced	740	14.3%	1,791	13.9%	5,074	13.6%

### Household Type (2014)

	1 Mile		3 Miles		5 Miles	
Population Family	4,962	81.0%	11,969	79.4%	32,764	74.0%
Population Non-Family	1,166	19.0%	2,786	18.5%	8,491	19.2%
Population Group Quarters	-	-	314	2.1%	3,008	6.8%
Family Households	1,765	64.4%	4,265	65.2%	11,606	63.6%
Non-Family Households	976	35.6%	2,271	34.8%	6,647	36.4%
Married Couple with Children	485	18.8%	1,095	18.7%	2,497	16.9%
Average Family Household Size	2.8		2.8		2.8	

### Household Size (2014)

	1 Mile		3 Miles		5 Miles	
1 Person Households	871	31.8%	1,997	30.6%	5,750	31.5%
2 Person Households	922	33.6%	2,289	35.0%	6,261	34.3%
3 Person Households	433	15.8%	999	15.3%	2,886	15.8%
4 Person Households	335	12.2%	796	12.2%	1,969	10.8%
5 Person Households	117	4.3%	293	4.5%	873	4.8%
6 or More Person Households	64	2.3%	162	2.5%	513	2.8%

### Household Vehicles (2014)

	1 Mile		3 Miles		5 Miles	
Households with 0 Vehicles Available	154	5.6%	466	7.1%	1,914	10.5%
Households with 1 Vehicles Available	1,120	40.9%	2,409	36.9%	6,869	37.6%
Households with 2 or More Vehicles Available	1,467	53.5%	3,661	56.0%	9,469	51.9%
Total Vehicles Available	4,533		11,246		29,848	
Average Vehicles Per Household	1.7		1.7		1.6	

This report was produced using data from private and government sources deemed to be reliable. The information herein is provided without representation or warranty.



# EXPANDED PROFILE

2000-2010 Census, 2014 Estimates with 2019 Projections

Calculated using Proportional Block Groups

Lat/Lon: 41.1568/-80.5680

RF5

30 E Liberty St Hubbard, OH	1 Mile	3 Miles	5 Miles
<b>Labor Force (2014)</b>			
Estimated Labor Population Age 16 Years or Over	5,109	12,343	33,874
Estimated Civilian Employed	3,178 62.2%	7,054 57.2%	17,343 51.2%
Estimated Civilian Unemployed	176 3.4%	581 4.7%	1,829 5.4%
Estimated in Armed Forces	- -	2 -	19 0.1%
Estimated Not in Labor Force	1,755 34.4%	4,706 38.1%	14,683 43.3%
Unemployment Rate	3.4%	4.7%	5.4%
<b>Occupation (2010)</b>			
Occupation: Population Age 16 Years or Over	2,973	6,696	17,169
Management, Business, Financial Operations	321 10.8%	793 11.8%	1,765 10.3%
Professional, Related	617 20.8%	1,234 18.4%	3,235 18.8%
Service	536 18.0%	1,245 18.6%	3,937 22.9%
Sales, Office	773 26.0%	1,652 24.7%	4,123 24.0%
Farming, Fishing, Forestry	1 -	13 0.2%	78 0.5%
Construct, Extraction, Maintenance	213 7.2%	536 8.0%	1,217 7.1%
Production, Transport Material Moving	512 17.2%	1,223 18.3%	2,814 16.4%
White Collar Workers	1,711 57.6%	3,680 55.0%	9,124 53.1%
Blue Collar Workers	1,262 42.4%	3,017 45.0%	8,045 46.9%
<b>Consumer Expenditure (2014)</b>			
Total Household Expenditure	\$124 M	\$298 M	\$805 M
Total Non-Retail Expenditure	\$71.3 M 57.4%	\$171 M 57.4%	\$461 M 57.2%
Total Retail Expenditure	\$52.9 M 42.6%	\$127 M 42.6%	\$344 M 42.8%
Apparel	\$5.92 M 4.8%	\$14.2 M 4.8%	\$38.4 M 4.8%
Contributions	\$4.27 M 3.4%	\$10.4 M 3.5%	\$28.5 M 3.5%
Education	\$2.68 M 2.2%	\$6.54 M 2.2%	\$18.0 M 2.2%
Entertainment	\$6.89 M 5.5%	\$16.5 M 5.6%	\$44.6 M 5.5%
Food and Beverages	\$19.4 M 15.6%	\$46.5 M 15.6%	\$126 M 15.6%
Furnishings and Equipment	\$5.35 M 4.3%	\$12.8 M 4.3%	\$34.3 M 4.3%
Gifts	\$3.09 M 2.5%	\$7.50 M 2.5%	\$20.5 M 2.5%
Health Care	\$7.90 M 6.4%	\$18.9 M 6.4%	\$51.4 M 6.4%
Household Operations	\$4.21 M 3.4%	\$10.2 M 3.4%	\$27.6 M 3.4%
Miscellaneous Expenses	\$2.11 M 1.7%	\$5.05 M 1.7%	\$13.7 M 1.7%
Personal Care	\$1.81 M 1.5%	\$4.34 M 1.5%	\$11.7 M 1.5%
Personal Insurance	\$1.20 M 1.0%	\$2.90 M 1.0%	\$7.87 M 1.0%
Reading	\$409 K 0.3%	\$981 K 0.3%	\$2.65 M 0.3%
Shelter	\$23.8 M 19.1%	\$57.2 M 19.2%	\$155 M 19.2%
Tobacco	\$878 K 0.7%	\$2.09 M 0.7%	\$5.70 M 0.7%
Transportation	\$25.4 M 20.4%	\$60.4 M 20.3%	\$161 M 20.1%
Utilities	\$8.97 M 7.2%	\$21.4 M 7.2%	\$58.1 M 7.2%
<b>Educational Attainment (2014)</b>			
Adult Population Age 25 Years or Over	4,375	10,672	29,014
Elementary (Grade Level 0 to 8)	74 1.7%	218 2.0%	967 3.3%
Some High School (Grade Level 9 to 11)	339 7.8%	935 8.8%	2,744 9.5%
High School Graduate	1,774 40.5%	4,791 44.9%	12,700 43.8%
Some College	963 22.0%	2,081 19.5%	5,792 20.0%
Associate Degree Only	405 9.3%	792 7.4%	1,885 6.5%
Bachelor Degree Only	606 13.8%	1,331 12.5%	3,271 11.3%
Graduate Degree	215 4.9%	525 4.9%	1,657 5.7%

This report was produced using data from private and government sources deemed to be reliable. The information herein is provided without representation or warranty.

# EXPANDED PROFILE

2000-2010 Census, 2014 Estimates with 2019 Projections

Calculated using Proportional Block Groups

Lat/Lon: 41.1568/-80.5680

RF5

## 30 E Liberty St

## Hubbard, OH

### Units In Structure (2010)

	1 Mile		3 Miles		5 Miles	
1 Detached Unit	2,157	80.2%	5,192	80.9%	13,753	76.7%
1 Attached Unit	94	3.5%	201	3.1%	558	3.1%
2 to 4 Units	135	5.0%	268	4.2%	1,191	6.6%
5 to 9 Units	73	2.7%	206	3.2%	905	5.0%
10 to 19 Units	62	2.3%	139	2.2%	352	2.0%
20 to 49 Units	42	1.6%	79	1.2%	266	1.5%
50 or More Units	118	4.4%	184	2.9%	401	2.2%
Mobile Home or Trailer	10	0.4%	149	2.3%	508	2.8%
Other Structure	-	-	-	-	-	-

### Homes Built By Year (2010)

	1 Mile		3 Miles		5 Miles	
Homes Built 2005 or later	40	1.5%	108	1.7%	329	1.8%
Homes Built 2000 to 2004	76	2.8%	208	3.2%	682	3.8%
Homes Built 1990 to 1999	236	8.8%	527	8.2%	1,460	8.1%
Homes Built 1980 to 1989	135	5.0%	365	5.7%	1,133	6.3%
Homes Built 1970 to 1979	502	18.6%	1,026	16.0%	2,620	14.6%
Homes Built 1960 to 1969	276	10.3%	835	13.0%	2,552	14.2%
Homes Built 1950 to 1959	744	27.6%	1,493	23.3%	3,645	20.3%
Homes Built Before 1949	683	25.4%	1,855	28.9%	5,514	30.7%

### Home Values (2010)

	1 Mile		3 Miles		5 Miles	
Home Values \$1,000,000 or More	2	0.1%	8	0.2%	27	0.2%
Home Values \$500,000 to \$999,999	4	0.2%	11	0.2%	59	0.5%
Home Values \$400,000 to \$499,999	7	0.4%	28	0.6%	90	0.7%
Home Values \$300,000 to \$399,999	32	1.6%	93	1.9%	301	2.5%
Home Values \$200,000 to \$299,999	123	6.4%	394	8.2%	911	7.4%
Home Values \$150,000 to \$199,999	163	8.5%	490	10.1%	1,440	11.7%
Home Values \$100,000 to \$149,999	479	25.0%	1,058	21.9%	2,339	19.0%
Home Values \$70,000 to \$99,999	786	41.0%	1,658	34.3%	2,910	23.7%
Home Values \$50,000 to \$69,999	236	12.3%	567	11.7%	1,465	11.9%
Home Values \$25,000 to \$49,999	43	2.3%	234	4.8%	1,519	12.4%
Home Values Under \$25,000	43	2.2%	289	6.0%	1,230	10.0%
Owner-Occupied Median Home Value	\$99,233		\$99,305		\$93,641	
Renter-Occupied Median Rent	\$469		\$453		\$418	

### Transportation To Work (2010)

	1 Mile		3 Miles		5 Miles	
Drive to Work Alone	2,642	89.9%	5,855	88.4%	14,506	86.3%
Drive to Work in Carpool	190	6.5%	406	6.1%	1,092	6.5%
Travel to Work by Public Transportation	11	0.4%	55	0.8%	192	1.1%
Drive to Work on Motorcycle	-	-	1	-	5	-
Walk or Bicycle to Work	5	0.2%	25	0.4%	316	1.9%
Other Means	33	1.1%	50	0.8%	187	1.1%
Work at Home	57	1.9%	232	3.5%	508	3.0%

### Travel Time (2010)

	1 Mile		3 Miles		5 Miles	
Travel to Work in 14 Minutes or Less	753	26.1%	1,856	29.0%	5,652	34.7%
Travel to Work in 15 to 29 Minutes	1,201	41.7%	2,691	42.1%	6,911	42.4%
Travel to Work in 30 to 59 Minutes	772	26.8%	1,449	22.7%	2,865	17.6%
Travel to Work in 60 Minutes or More	156	5.4%	395	6.2%	869	5.3%
Average Minutes Travel to Work	22.0		20.8		18.7	

This report was produced using data from private and government sources deemed to be reliable. The information herein is provided without representation or warranty.