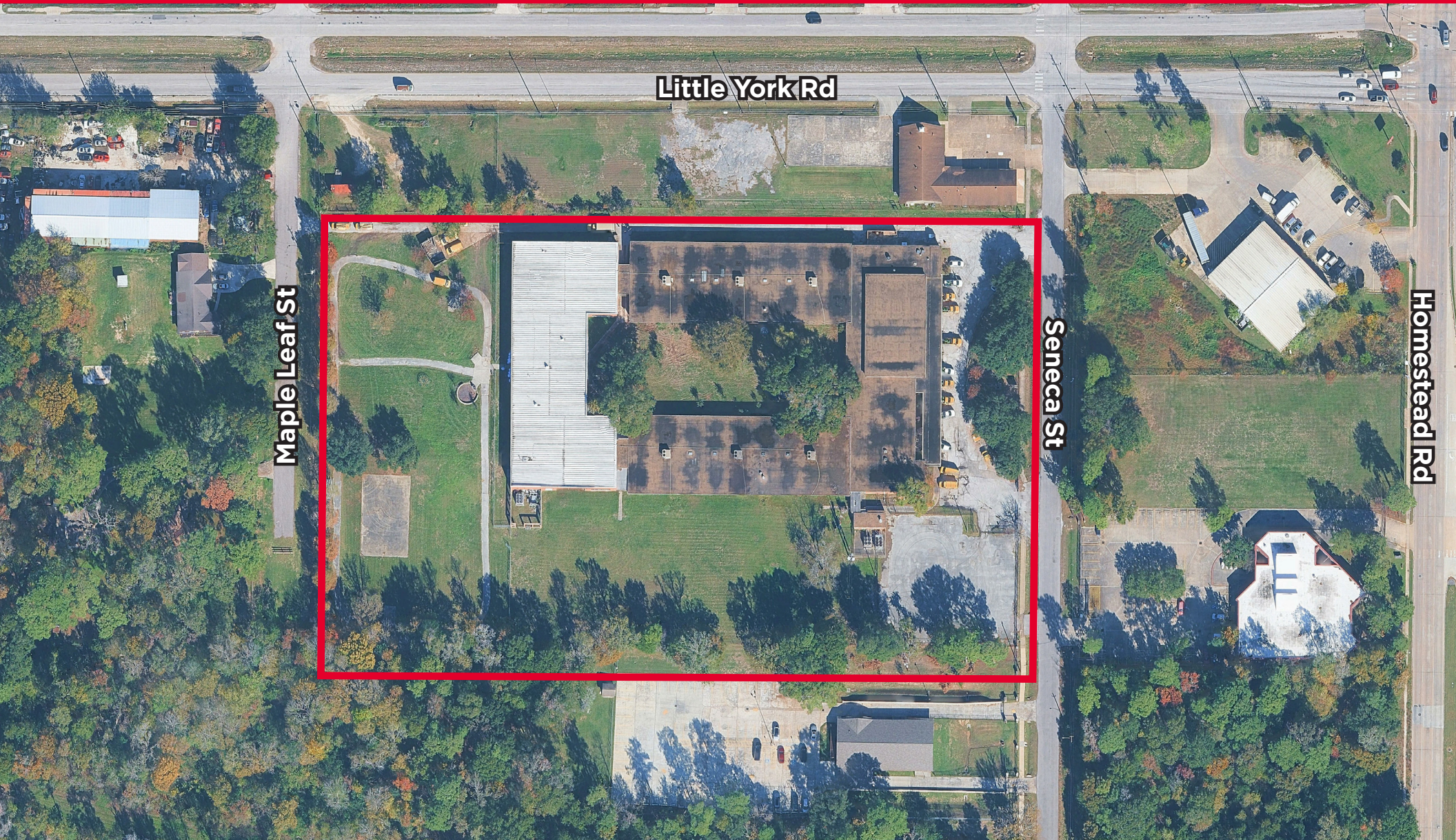


10719 SENECA ST

HISD SURPLUS PROPERTY

HOUSTON, TX 77016



KRISTEN MCDADE

Managing Director

+ 1 713 331 1796

kristen.mcdade@cushwake.com

MATTHEW DAVIS

Senior Director

+ 1 713 331 1798

matthew.davis@cushwake.com

MELISSA ELIZONDO

Brokerage Specialist

+1 346 396 4008

melissa.elizondo@cushwake.com

2025

GREATER HOUSTON MARKETPLACE

WHY HOUSTON:

6.8M

Residents in the City of Houston

25

Fortune 500 Companies

#3

among US Metro Areas in Fortune 500 Headquarters

#5

in the US in Fortune 1000 headquarters

55M sq ft

of Class A space

160k

Business establishments

GLOBAL TRADE CITY

1st

in Foreign Waterborne Tonnage

1st

in Gulf Coast Container Port

1st

in Import and Export

73

Foreign Owned Firms

+ At 665 square miles, the City of Houston is larger in area than the cities of Chicago, Dallas, Los Angeles, New York, Phoenix and San Diego.

+ 3,360,800 Jobs in Houston MSA



ENERGY CAPITAL OF THE WORLD



PORT OF HOUSTON



WORLD'S LARGEST MEDICAL CENTER



NASA

DEMOGRAPHICS

(within 2 miles of 10719 Seneca St, Houston, TX 77016)



39,131

2024 Total Population



\$59,365

2024 Average Household Income



\$203,084

2024 Average Home Value

MAJOR LEAGUE SPORTS TEAMS



CLUTCH CITY

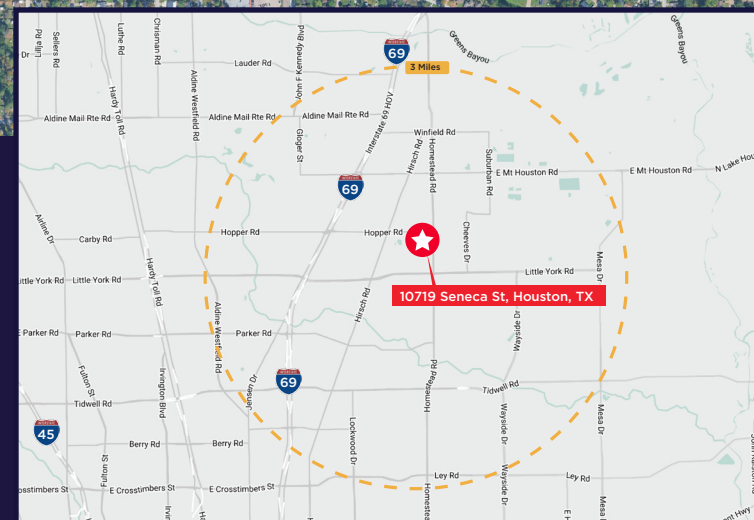
10719 SENECA ST



PROPERTY HIGHLIGHTS

APN: 0420540000229

- ±7.9 gross acres with 61,329 SF building (built in 1964)
- Located in East Little York/Homestead - Super Neighborhood #47
- No floodplain, wetlands, or easements
- Easy access off Seneca via Little York Road



KRISTEN MCDADE

Managing Director

+1 713 331 1796

kristen.mcdade@cushwake.com

MATTHEW DAVIS

Senior Director

+1 713 331 1798

matthew.davis@cushwake.com

MELISSA ELIZONDO

Brokerage Specialist

+1 346 396 4008

melissa.elizondo@cushwake.com

©2025 Cushman and Wakefield. All rights reserved. The information contained in this communication is strictly confidential. This information has been obtained from sources believed to be reliable but has not been verified. NO WARRANTY OR REPRESENTATION, EXPRESS OR IMPLIED, IS MADE AS TO THE CONDITION OF THE PROPERTY (OR PROPERTIES) REFERENCED HEREIN OR AS TO THE ACCURACY OR COMPLETENESS OF THE INFORMATION CONTAINED HEREIN, AND SAME IS SUBMITTED SUBJECT TO ERRORS, OMISSIONS, CHANGE OF PRICE, RENTAL OR OTHER CONDITIONS, WITHDRAWAL WITHOUT NOTICE, AND TO ANY SPECIAL LISTING CONDITIONS IMPOSED BY THE PROPERTY OWNER(S). ANY PROJECTIONS, OPINIONS OR ESTIMATES ARE SUBJECT TO UNCERTAINTY AND DO NOT SIGNIFY CURRENT OR FUTURE PROPERTY PERFORMANCE.