



Sonoma Marketplace

201 W. Napa Street | Sonoma, California

NOW LEASING

| <u>SPACE#</u> | <u>SF</u> | <u>RENT</u> | <u>NNN</u> |
|---------------|---------------|-------------|------------|
| 5 | LEASE PENDING | | |
| 7 | 1,211 | Call | \$8.90 |

For information, contact:

Andy Armstrong
Senior Leasing Manager
Direct: 415-689-5357
aarmstrong@crosspointrealty.com
CA DRE #01860367

Carter Hemming
chemming@crosspointrealty.com
CA DRE #01123464

Kathy DeOchoa
kdeochoa@crosspointrealty.com
CA DRE #01871554

Phone: 415-288-6888
Fax: 415-288-6877
Crosspoint Realty Services, Inc.
20211 Patio Drive, Suite 145
Castro Valley, CA 94546
www.crosspointrealty.com



Sonoma Marketplace

201 W. Napa Street | Sonoma, California

SITE PLAN

Contact: Andy Armstrong CA DRE# 01860367, aarmstrong@crosspointrealty.com; Carter Hemming CA DRE#01123464, chemming@crosspointrealty.com; Kathy DeOchoa CA DRE#01871554, kdechoa@crosspointrealty.com; Phone 415.288.6888

| Space | Tenant |
|-------|-------------------------------|
| 01-02 | The Toy Shop |
| 03 | Sonoma Optometry |
| 04 | Filigree Jewelry |
| 05 | LEASE PENDING |
| 06 | Scoops Ice Cream |
| 07 | AVAILABLE |
| 08 | Sourdough and Co. |
| 09 | Bangkok 9 Thai Restaurant |
| 10 | Marketplace Haircutters |
| 11-13 | Whole Foods |
| 14 | McCaulou's Kids |
| 15 | Pure Barre |
| 16 | Fine Line Art Supply |
| 17 | Holly Hock |
| 18 | McCaulou's |
| 19 | McCaulou's Gifts |
| 21 | Home Grown Bagels |
| 22 | Studio Sun & Beauty |
| 23 | Nail Pro |
| 24 | Tip Top Cleaners |
| 25 | Launderland |
| 26 | Happy Garden Restaurant |
| 27 | Sweet Straw |
| 28 | A New Image Salon |
| 29 | CVS |
| 30-31 | Round Table Pizza |
| 32 | Valley of the Moon Skate Shop |
| 33 | BMO Bank |
| 34 | Black Bear Diner |





Sonoma Marketplace

201 W. Napa Street | Sonoma, California

MARKET AREA

Sonoma Marketplace Tenants Include:

Whole Foods
CVS

McCaulou's Department Store

| | |
|-------------------|-------------------|
| BMO Bank | Homegrown Bagel |
| Black Bear Diner | McCaulou's Kids |
| Filigree Jewelers | Pure Barre |
| Holly Hock | Round Table Pizza |

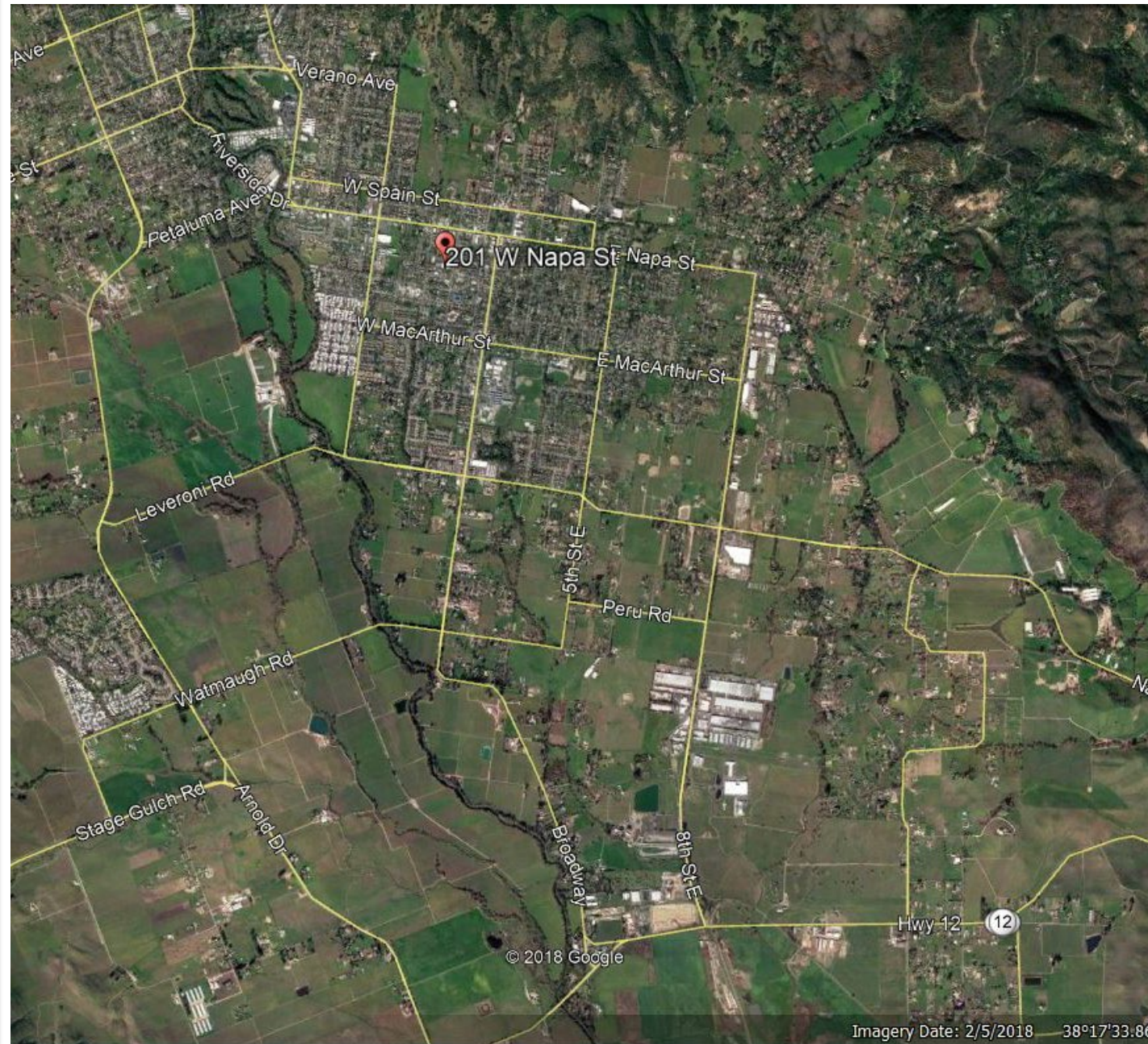
For information, contact:

Andy Armstrong
Senior Leasing Manager
Direct: 415-689-5357
aarmstrong@crosspointrealty.com
CA DRE #01860367

Carter Hemming
chemming@crosspointrealty.com
CA DRE #01123464

Kathy DeOchoa
kdeochoa@crosspointrealty.com
CA DRE #01871554

Phone: 415-288-6888
Fax: 415-288-6877
Crosspoint Realty Services, Inc.
20211 Patio Drive, Suite 145
Castro Valley, CA 94546
www.crosspointrealty.com



Sonoma Marketplace

201 W. Napa Street | Sonoma, California

MAP & INFORMATION

Description:

Sonoma Marketplace is the community dominant shopping center anchored by Whole Foods, CVS, and McCaulou's.

Location:

Intersection of Highway 12 and Second Avenue in the historic town of Sonoma, California.

For information, contact:

Andy Armstrong

Senior Leasing Manager

Direct: 415-689-5357

aarmstrong@crosspointrealty.com

CA DRE #01860367

Carter Hemming

chemming@crosspointrealty.com

CA DRE #01123464

Kathy DeOchoa

kdeochoa@crosspointrealty.com

CA DRE #01871554

Phone: 415-288-6888

Fax: 415-288-6877

Crosspoint Realty Services, Inc.

20211 Patio Drive, Suite 145

Castro Valley, CA 94546

www.crosspointrealty.com

