

**MAJOR
RENT
REDUCTION**



AVAILABLE Approx. 10,927 RSF

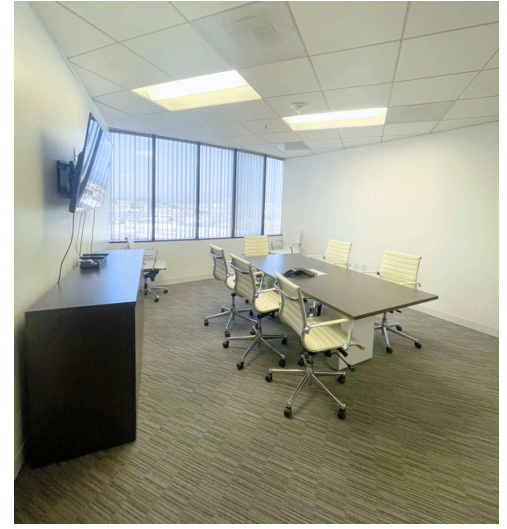
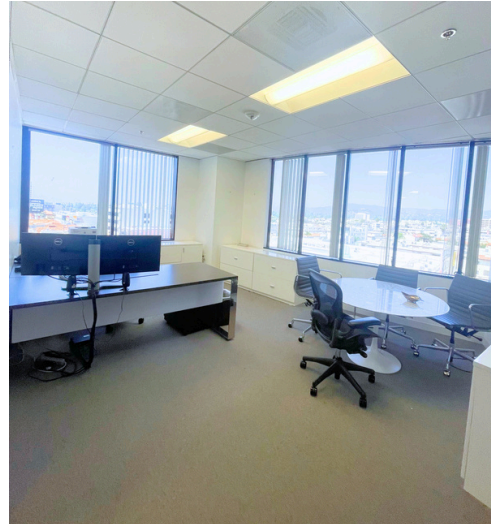
RATE ~~\$1.75 RSF/FSG~~
\$1.25 RSF/FSG

TERM Negotiable

- Twenty-Five Private Offices
- Conference Room
- Kitchen
- Furniture Included
- Prime Brentwood Corridor Location



CRAIG MILLER
310.202.9008 x 101
craig@wilshireag.com
DRE# 01006713



CRAIG MILLER
310.202.9008 x 101
craig@wilshireag.com
DRE# 01006713

