

# FOR LEASE OFFICE - FIRST FLOOR



**1991 Northampton Street | Easton, PA 18042**  
**25,000 SF Office Building | Renovated Space**



## Key Features

- Ample Parking
- Excellent location
- **Commercial elevator**
- Additional warehouse / storage space available
- Public Utilities

## Location

Northampton County: Located on the main east-west artery from downtown Easton to all three (3) Easton exits, (25th Street, 13th Street), Route 22 only minutes away.

## Zoning

BI - Business Industrial

**Lease Rate: Call For Pricing**

**For more information,  
please contact**

**Mike Capobianco, SIOR**  
610.442.4456  
mcapobianco@MarkwardGroup.com

**Del Markward, SIOR**  
610.306.6600  
dmarkward@MarkwardGroup.com



**SIOR**

**Markward Group**  
5925 Tilghman Street, Suite 1400  
Allentown, PA 18104  
p: 610.295.6600  
MarkwardGroup.com

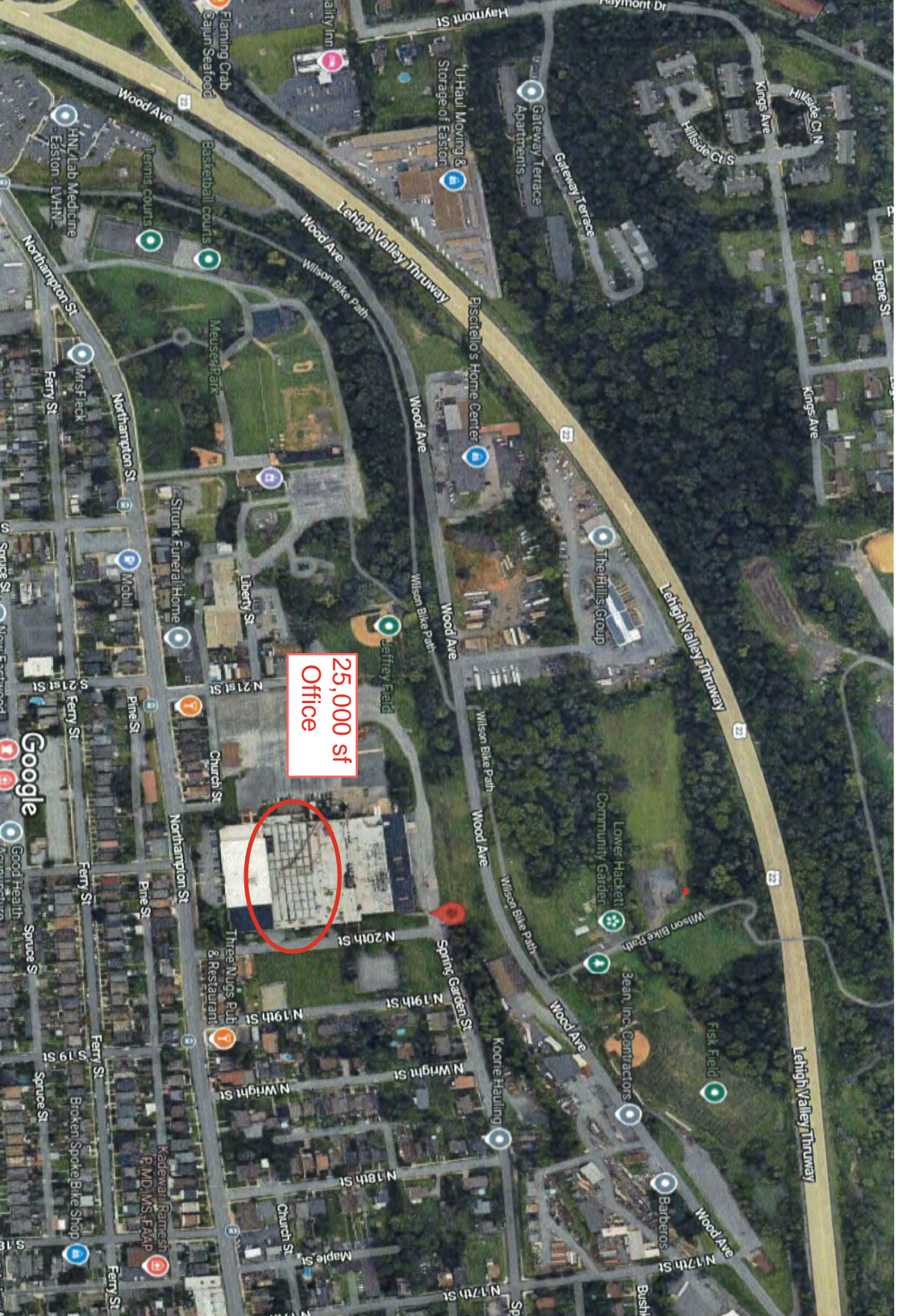
The foregoing information was furnished to us by sources which we deem to be reliable, but no warranty or representation is made as to the accuracy thereof. Subject to correction of errors, omissions, change of price, prior sale or withdrawal from market without notice.



# FOR LEASE OFFICE - FIRST FLOOR



**MARKWARD  
GROUP**  
COMMERCIAL, INDUSTRIAL & RETAIL REAL ESTATE



**25,000 sf  
Office**

The foregoing information was furnished to us by sources which we deem to be reliable, but no warranty or representation is made as to the accuracy thereof. Subject to correction of errors, omissions, change of price, prior sale or withdrawal from market without notice.