

15

RIVINGTON STREET

Between Bowery & Chrystie

FOR SALE



TWO LEVELS OF SELLING SPACE + OFFICE SPACE & DOUBLE HEIGHT CEILINGS IN THE BACK

GROUND
1,200
Square Feet

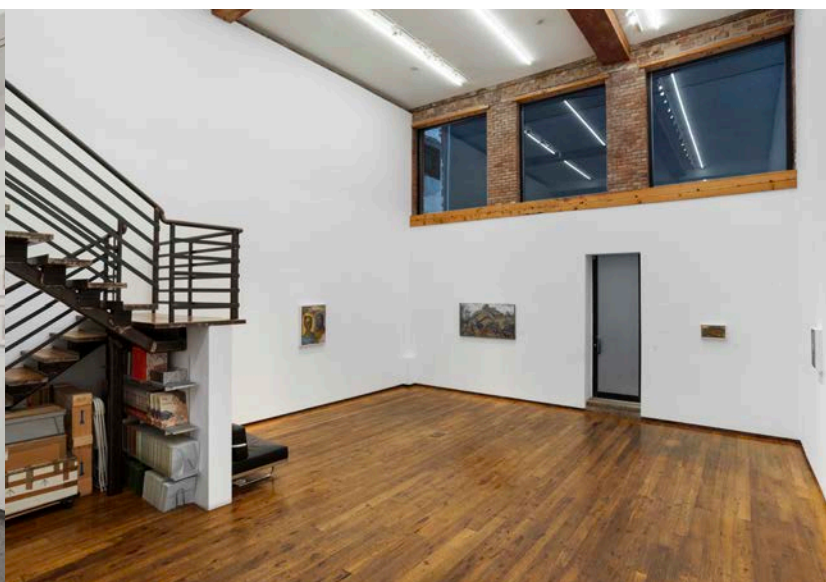
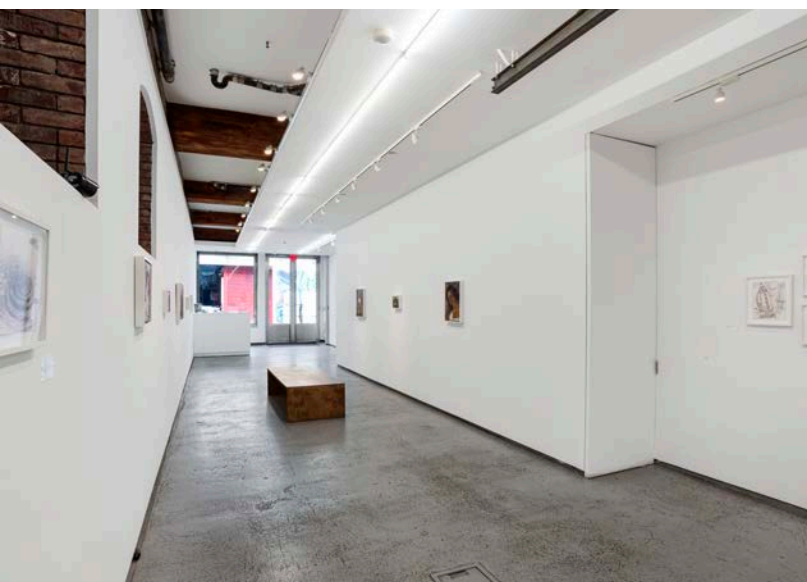
LOWER
1,600
Square Feet

FRONTAGE
17
Feet

CEILING HT
12'6"
Ground

CEILING HT
9'-20'
Lower

Asking Price: **Please Inquire** | RE Tax: **\$1,551/Month** | Common Charges: **\$597.67/Month**

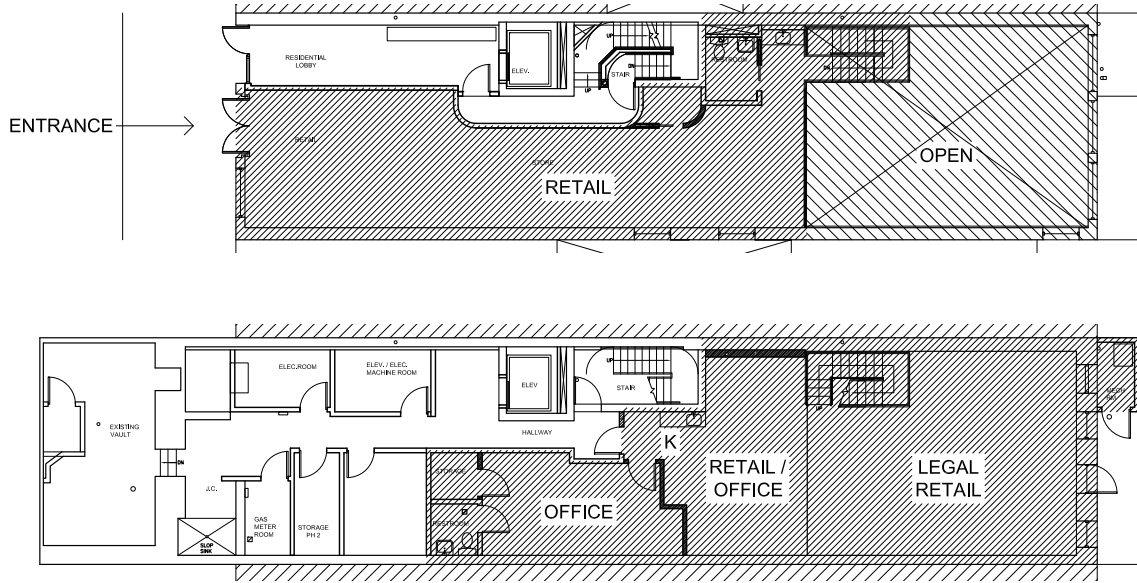


HIGHLIGHTS :

- Cool block connecting Nolita to LES. Close to Supreme, Freemans, Museum of Graffiti & New Museum
- Beautiful exposed brick and additional windows behind current gallery install
- Double height ceiling in the back
- Lower level flooring has radiant heat
- Windows in the back
- Lower level selling
- All glass frontage

15

RIVINGTON STREET





15

RIVINGTON STREET



NEIGHBORS INCLUDE:

New Museum | Supreme | Freemans | Camper | Antiithesis | PlantShed

PLEASE CONTACT:

Jane McVerry

212.604.9005

jane@sinvin.com

Matt Cohen

212.858.9548

matt@L3re.com



Exposed brick and additional windows behind current gallery install

