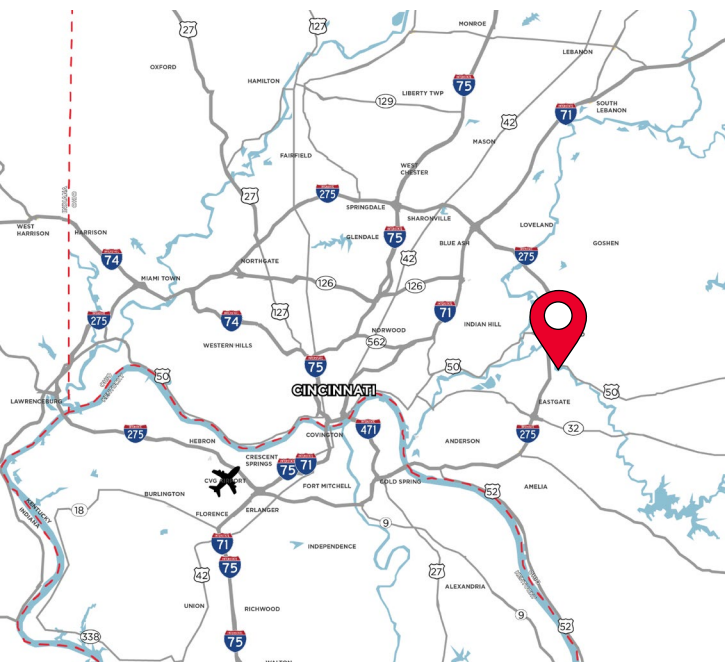


**FOR SUBLEASE**  
**25 WHITNEY**  
**DRIVE**  
MILFORD, OH 45150



**FLEX/ R+D SPACE**

**SUBLEASE RATE: NEGOTIABLE**



## **PROPERTY HIGHLIGHTS**

- 25,806 Total SF
- Sublease expires 12/31/2030
- (3) 10' x 10' Grade-Level Doors
- Ample Parking Available
- 30 Minutes from CVG
- Clean Rooms & Lab Space Layout
- 100% Air Conditioned throughout Office/Warehouse

For more information, contact:

**Seattle Stein**  
Director  
+1 513 763 3027  
seattle.stein@cushwake.com

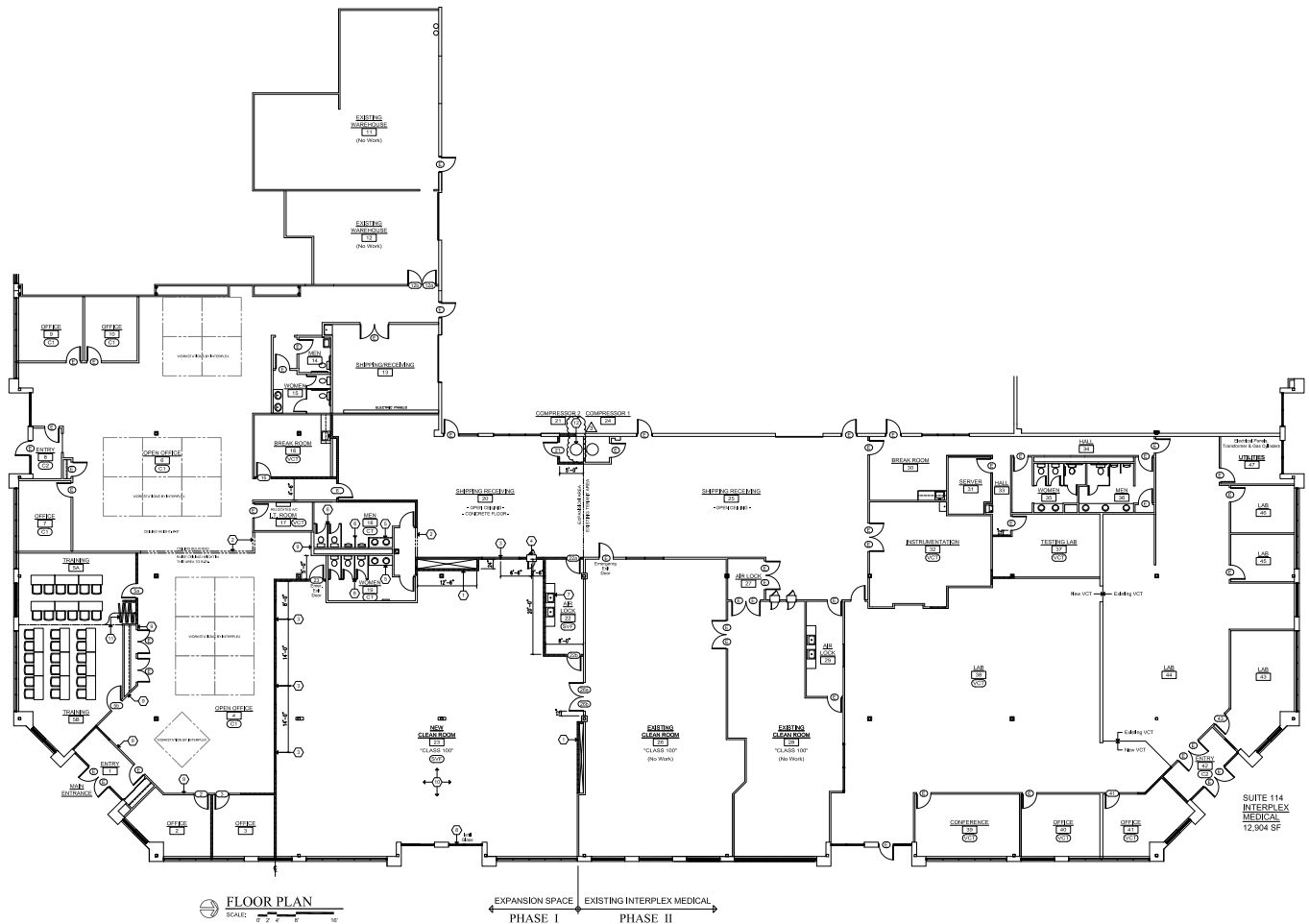
201 E. Fourth Street, Suite 1800  
Cincinnati, OH 45202  
P: +1 513 421 4884  
cushmanwakefield.com

**FOR SUBLEASE**  
**25 WHITNEY ROAD**  
MILFORD, OH 45150

**BUILDING SPECIFICATIONS**

<b>LOCATION</b>	Milford, OH	<b>DRIVE-IN DOORS</b>	(3) Drive-In Doors (10'W x 10'H)
<b>JURISDICTION</b>	Miami Township	<b>FIRE SUPPRESSION</b>	Wet System
<b>TOTAL SIZE</b>	78,793 SF	<b>ELECTRIC</b>	3 480 Volt, 3 Phase
<b>AVAILABLE SPACE</b>	25,806 SF	<b>LIGHTING</b>	LED's & Fluorescent
<b>CLEAR HEIGHT</b>	10' - 12'	<b>MISC</b>	Lab Space Clean Rooms Airlines w/ Compressor
<b>FLOORS</b>	Concrete	<b>TAXES</b>	0% Earnings Tax
<b>PARKING</b>	85± Auto Parking		

**FLOOR PLAN**



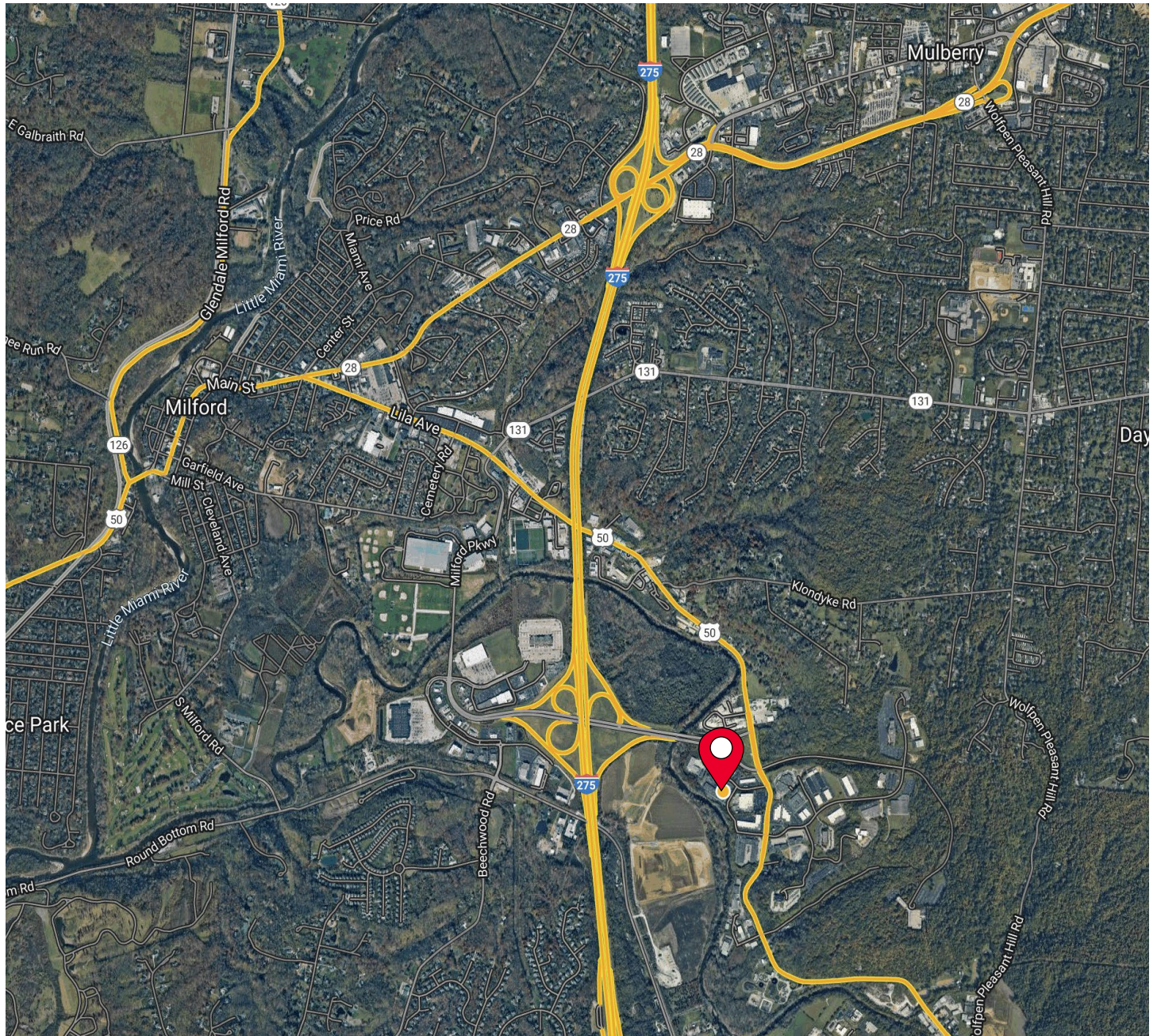
**FOR SUBLEASE**  
**25 WHITNEY ROAD**  
MILFORD, OH 45150

**BUILDING PHOTOS**



FOR SUBLEASE  
**25 WHITNEY ROAD**  
MILFORD, OH 45150

**AERIAL LOCATION**



For more information, contact:

**Seattle Stein**  
Director  
+1 513 763 3027  
seattle.stein@cushwake.com

201 E. Fourth Street, Suite 1800  
Cincinnati, OH 45202  
P: +1 513 421 4884  
cushmanwakefield.com