

# VINE STREET RETAIL SUBLEASE

1262 East Vine Street | Murray, UT 84121

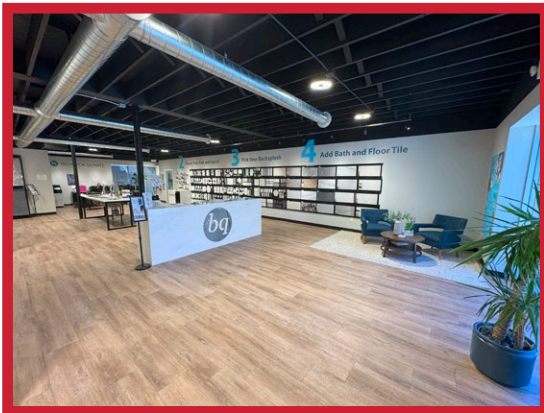


## FOR SUBLEASE

\$27.50 PSF/Yearly NNN

## Property Highlights

- Total Available: 2,000 SF
- Open Showroom Floor Plan
- One Restroom
- One Office
- Open Breakroom
- Ceiling Height: 10'
- Zoning: Commercial Neighborhood (C-N)
- Access: Quick Access To I-15 and I-215
- Location: Located In The Highly Desirable Central Salt Lake County Market
- Master Lease Expiration: July 31, 2028



## Contact

### SKYLER PETERSON, SIOR

Executive Vice President

m 801.656.7354

speterson@legendcommercial.com

### TRE BOURDEAUX, SIOR

Vice President

m 801.824.0397

tbourdeaux@legendcommercial.com

### PARKER TAGGART

Senior Associate

m 801.928.1815

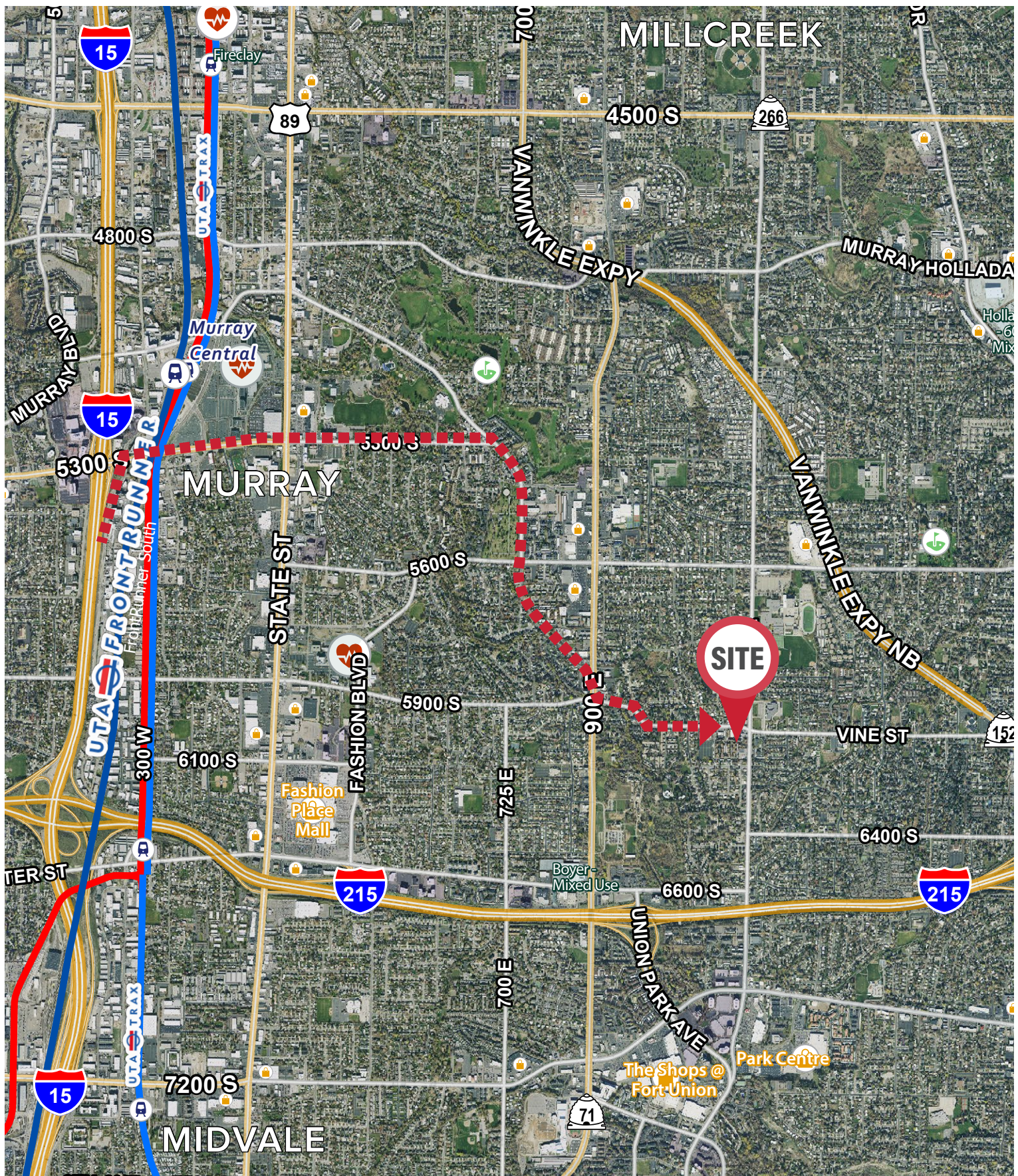
ptaggart@legendcommercial.com



801.930.6750 | [www.legendcommercial.com](http://www.legendcommercial.com)

2180 S 1300 E, Suite 240 | Salt Lake City, UT 84106





## Contact

### SKYLER PETERSON, SIOR

Executive Vice President

m 801.656.7354

speterson@legendcommercial.com

### TRE BOURDEAUX, SIOR

Vice President

m 801.824.0397

tbourdeaux@legendcommercial.com

### PARKER TAGGART

Senior Associate

m 801.928.1815

ptaggart@legendcommercial.com



801.930.6750 | [www.legendcommercial.com](http://www.legendcommercial.com)  
2180 S 1300 E, Suite 240 | Salt Lake City, UT 84106