

2010 & 2020

WELLNESS WAY

LAS VEGAS, NV 89106

GOLDRING

MEDICAL PLAZA

FOR LEASE



HEALTHCARE

MIKE TYMCZYN

VICE PRESIDENT

702.216.2371 **DIRECT**

mtymczyn@dcghealthcare.com

BS.0147041

PROPERTY HIGHLIGHTS

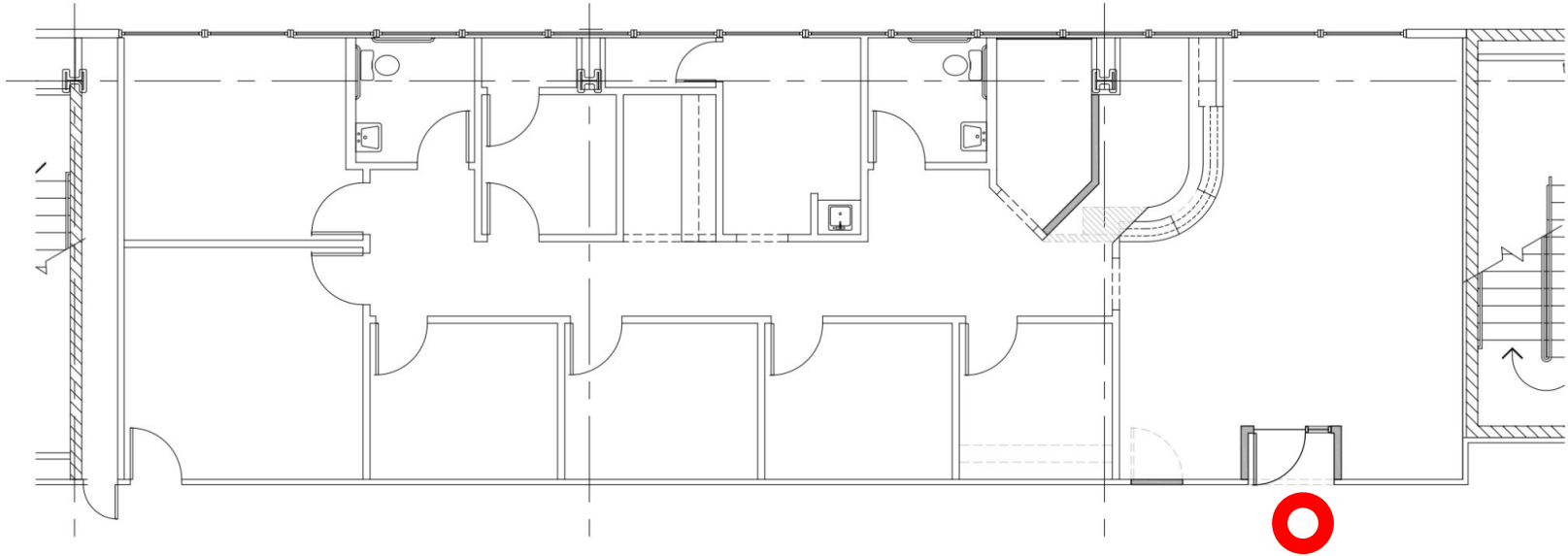
- Generous tenant improvement allowances
- Utilities, janitorial and minor repairs included in base rate
- Reserved, covered physician parking included at no additional charge
- Located on the Valley Hospital campus, centrally located in the Las Vegas Medical District with easy freeway and Strip access.
- Current specialties include: **Internal Medicine - Primary Care - Surgery - Neurology - Ophthalmology - Urology**



FOURTH FLOOR

AVAILABLE SUITES

| | |
|--|--------------|
| SUITE 401 (Available 4-1-2026) | 2,147 |
|--|--------------|





GOLDRING MEDICAL PLAZA

**VALLEY HOSPITAL
MEDICAL CENTER**

DCG
**GOLDRING
MEDICAL PLAZA**

**UNLV SCHOOL OF
MEDICINE**

**UNIVERSITY
MEDICAL CENTER**

**SHADOW LANE
MEDICAL PLAZA**



Your Golden Opportunity in Central Las Vegas

Leasing a medical office at Goldring Medical Plaza means being a part of the Las Vegas Medical District (LVMD).

The LVMD is one of the most important economic development projects in Southern Nevada, enhancing and expanding access to quality medical care advancing a higher quality of life. The LVMD is a collaborative effort between the City of Las Vegas and its downtown medical community.

Goldring Medical Plaza, indicated on the map below, offers your patients easy access from anywhere in the Las Vegas Valley and provides you, the tenant, with an affordable option to contribute to Las Vegas' medical future.

HOSPITAL SERVICES



Behavioral Health

Cardiovascular

- Chest Pain Center
- Angioplasty
- Cardiac catheterization
- Pacemaker/defibrillator implants
- Bi-ventricular implants
- Peripheral vascular interventions
- Cardiovascular surgery
- Intravascular Ultrasound

Diabetes Treatment Center

- Inpatient care

Dialysis

- Inpatient care

Emergency Services

- Urgent and emergency care 24/7
- Advanced primary stroke center

Endoscopic Procedures

Laboratory Services

Oncology

- Adult inpatient care
- Oncology Surgery

Orthopedics

Radiology

- Angiography
- CT scan
- MRI
- Nuclear Medicine
- X-ray

Rehabilitation

- Inpatient Physical Therapy
- Speech Therapy
- Occupational Therapy
- Short-term inpatient rehabilitation unit

Respiratory Services

Surgery

- Inpatient
- Outpatient
- Robotic

Wound Care

- Inpatient care
- Outpatient care
- Hyperbaric medicine