

Medical and Office Suites | Available for Lease

117 E Main Street, Payson, AZ 85541



- Medical Plaza made up of Eight Buildings
- Total SF is approximately 31,248 SF
- +/- 21,840 SF Vacant
- For Lease: \$25.00 PSF NNN
- **Motivated Landlord**
- **Willing to provide turn-key Medical and Dental Suites with Term**
- **Shell and Built-Out Options Available**
- **Spec Suite Options Available**
- Landlord is currently building out backlit monument signage, visible from AZ-260, sealcoating the parking lot, painting buildings, improving common area lighting and general maintenance catch-up

www.menlocre.com/property

Nicholas Aldini

Junior Advisor

nick@menlocre.com

P: 480.659.1777 • F: 480.535.5854
www.menlocre.com

Medical and Office Suites | Available for Lease

117 E Main Street, Payson, AZ 85541

Lease Spaces

Page 2

LEASE INFORMATION

Lease Type: NNN Lease Term: Negotiable
Total Space: 1,680 - 3,360 SF Lease Rate: \$25.00 SF/yr

AVAILABLE SPACES

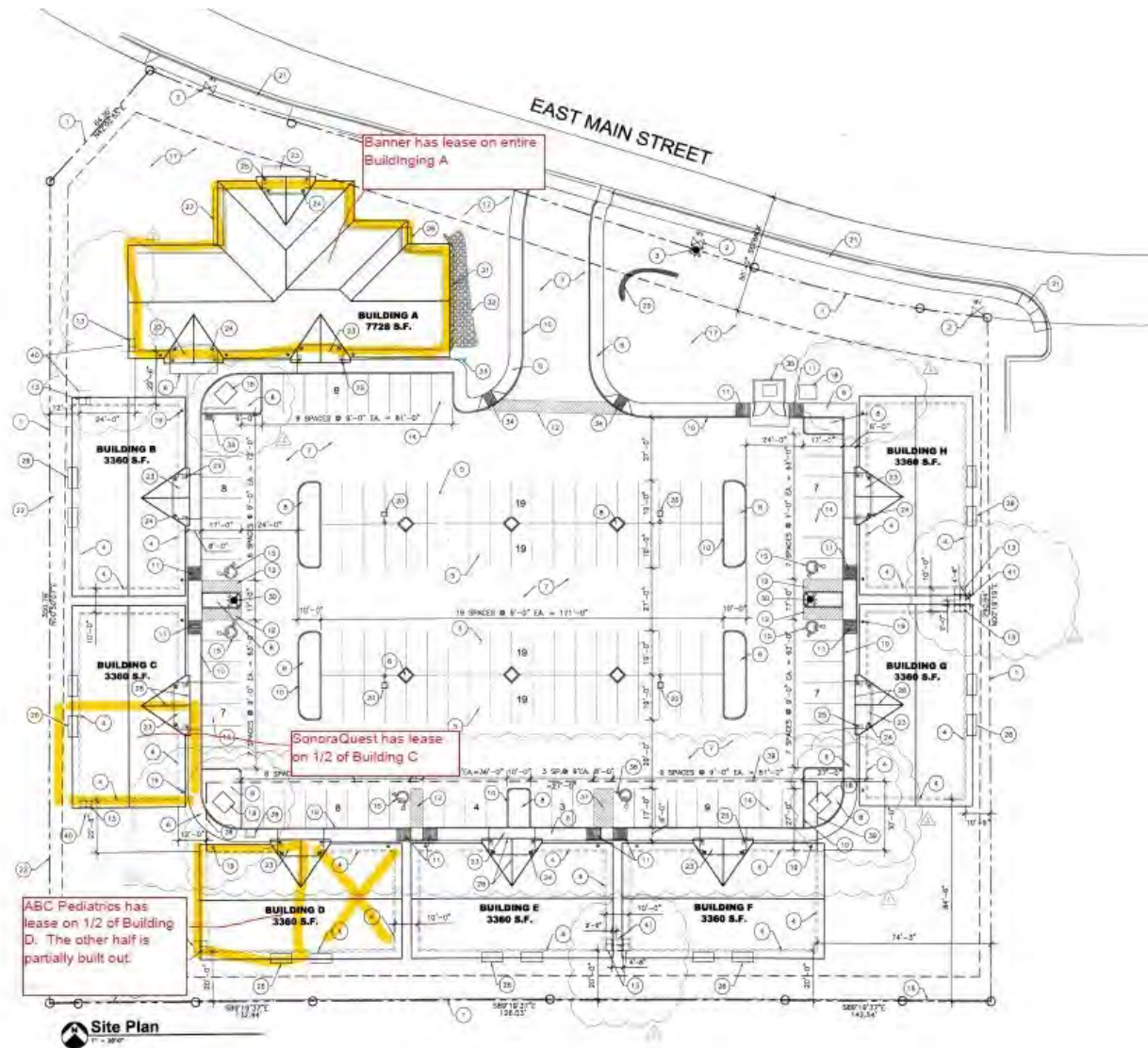
SUITE	TENANT	SIZE (SF)	LEASE TYPE	LEASE RATE	DESCRIPTION
Building B	Available	3,360 SF	NNN	\$25.00 SF/yr	-
Building C	Available	1,680 SF	NNN	\$25.00 SF/yr	-
Building D	Available	1,680 SF	NNN	\$25.00 SF/yr	-
Building E	Available	3,360 SF	NNN	\$25.00 SF/yr	-
Suite F-100	Available	1,680 SF	NNN	\$25.00 SF/yr	-
Building G	Available	3,359 SF	NNN	\$25.00 SF/yr	-
Building H	Available	3,360 SF	NNN	\$25.00 SF/yr	-



Medical and Office Suites | Available for Lease

117 E Main Street, Payson, AZ 85541

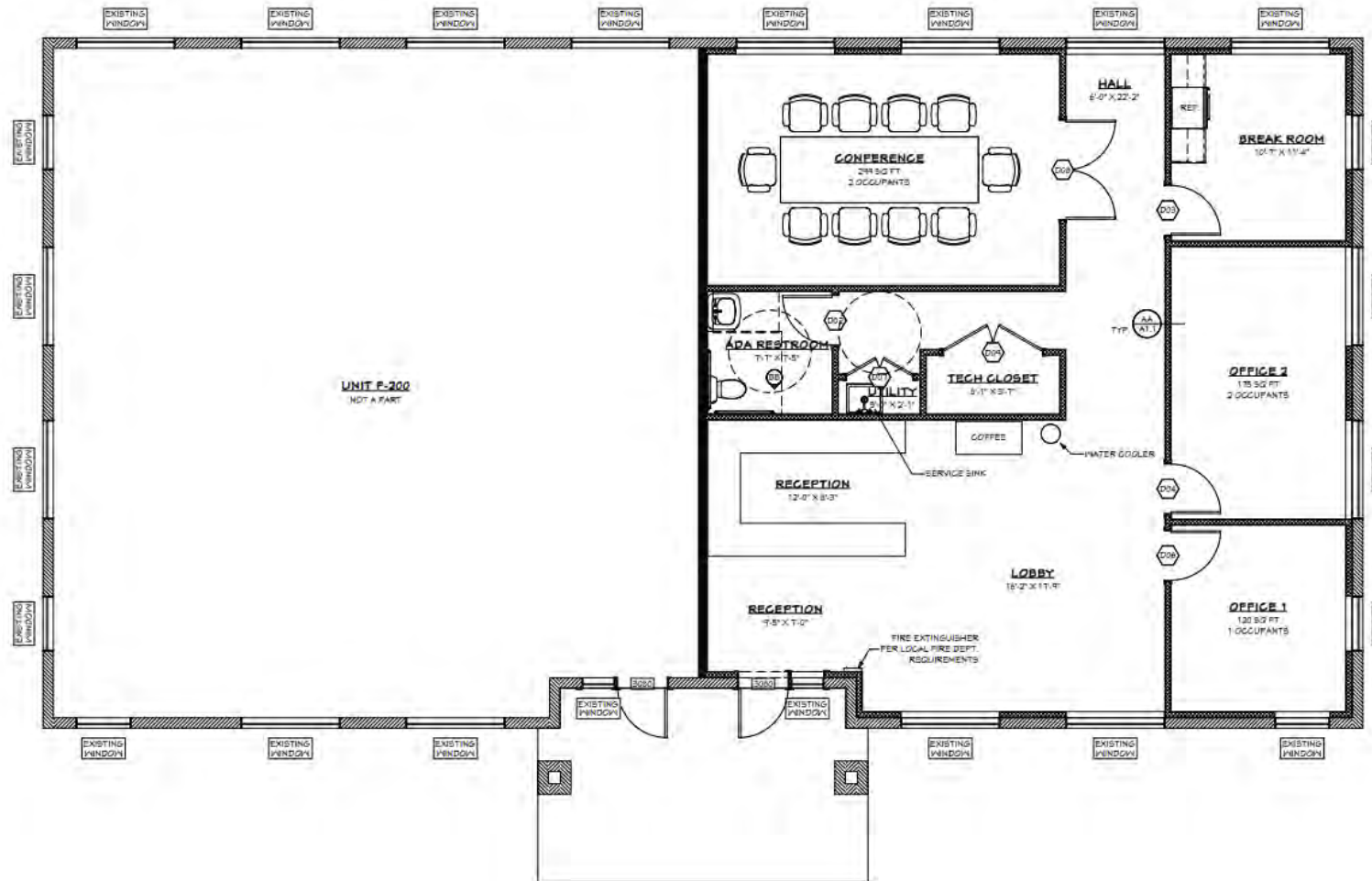
Site Plan



Medical and Office Suites | Available for Lease

117 E Main Street, Payson, AZ 85541

Suite F100 Floor Plan



Medical and Office Suites | Available for Lease

117 E Main Street, Payson, AZ 85541

Additional Details



DEMOGRAPHICS	1 Mile	5 Miles	10 Miles
Total Households:	691	4,070	7,726
Total Population:	1,613	9,486	18,005
Average HH Income:	\$50,286	\$52,072	\$54,201