

CHARMING FUNERAL HOME IN CAROL STREAM

415 N Gary Ave

...



SABRINA HERRERA

SABRINAHERRERA@REMAX.NET

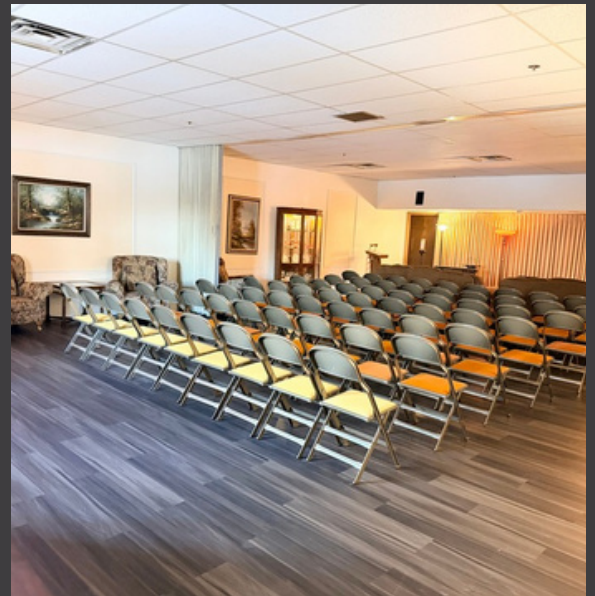


## NEIBORHOOD DESCRIPTION

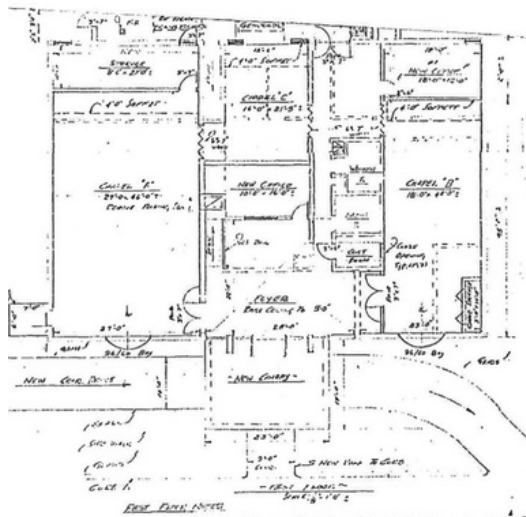
Located in Carol Stream, this high-traffic corridor offers strong visibility and easy access to major roadways. Surrounded by established businesses and residential communities, it provides consistent activity and excellent potential for investors and owner-users.

## FUNERAL HOME DESCRIPTION

This well-established property has served the community for over 40 years. The main level features three chapels, private offices, and restrooms, while the finished lower level includes a lounge with coffee bar, showroom space, kitchen, and ample storage. An attached garage and on-site parking for approximately 40 vehicles provide convenience for staff and visitors. Flexible layout and strong community presence.



## 1st floor



## 2nd floor



3



5



42,920 SQFT



6148 SQFT

## INTERIOR FEATURES

- Three Chapels
- Separate Restrooms
- Lower-Level Kitchen
- Private Offices
- Laminate Flooring
- Spacious Showroom
- Multiple Storage Rooms
- Central Heating
- Air Conditioning
- Elevator Access

## EXTERIOR FEATURES

- High-Visibility Location
- Prime Corner Lot
- All-Brick Exterior
- Expansive Lot Size
- Ample On-Site Parking
- Attached Garage
- Strong Street Presence
- Heavy Traffic Exposure

## CONTACT



(708) 646-1995



SABRINAHERRERA@REMAX.NET