



# 690 Market Street

High Visibility Corner Retail for Lease





# The Neighborhood

Ideally located at the intersection of the Financial District and Union Square, **690 Market** offers strong visibility as well as immediate access to BART and Muni light rail



**55.3 MILLION SF**  
of office space within 1/2 mile



**OVER 18,000**  
hotel rooms within 1/2 mile



**OVER 175,000**  
daytime workers within 1/2 mile



**RIDER'S PARADISE**  
100 Transit Score®



# The Asset

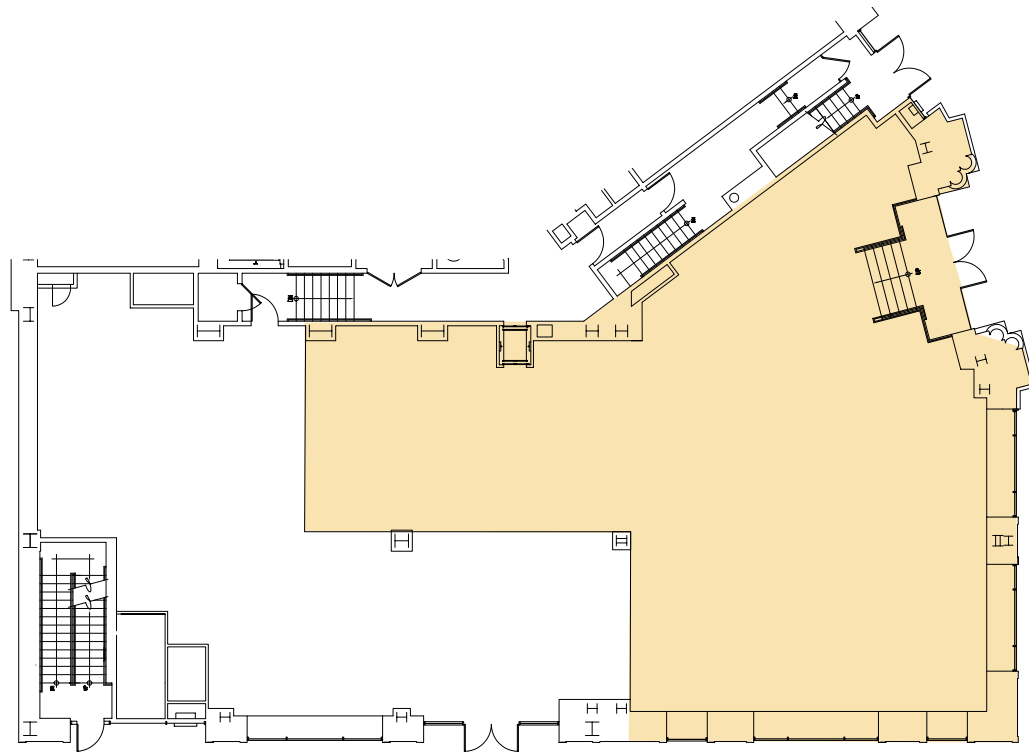
Commissioned in 1890 by journalist and businessman M.H. de Young for the San Francisco Chronicle, 690 Market is now home to over 83,000 SF of office space, as well as the 203-unit Ritz-Carlton Club & Residences, opened in 2007.

The building is steps away from the historic Lotta's Fountain, which served as a significant meeting point in the aftermath of the 1906 San Francisco earthquake and fire.





# Floor Plan



MARKET STREET

KEARNY STREET

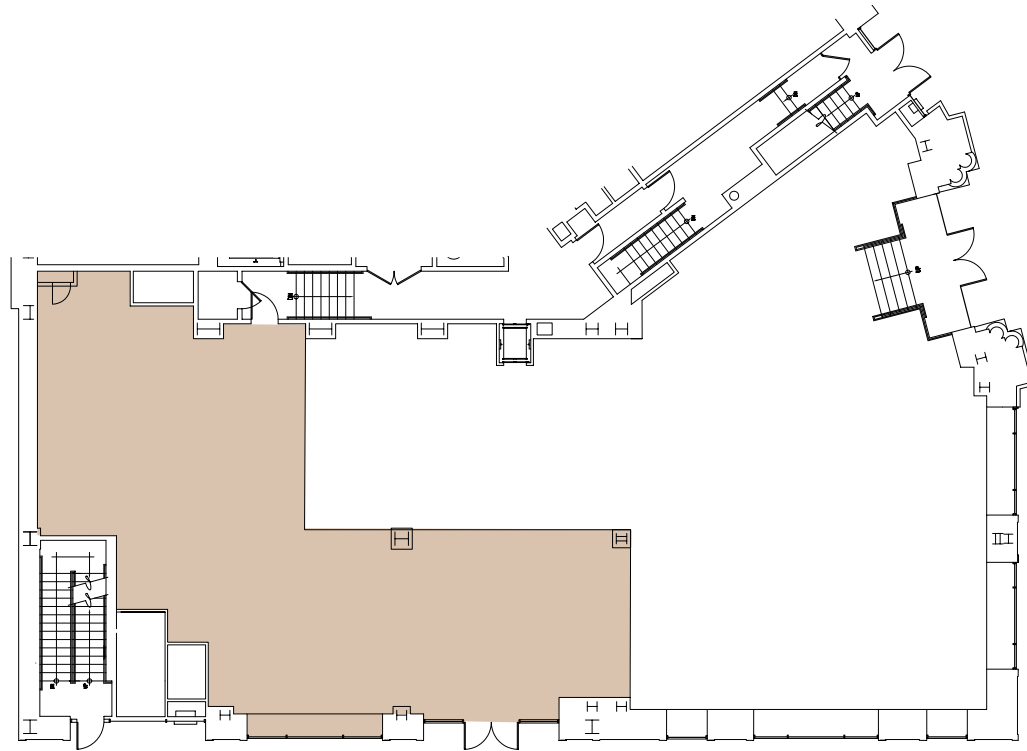
## Retail 1 | Market Street

3,592 SF

- Second generation standard retail space
- ADA restrooms
- High visibility corner retail
- Historic facade



# Floor Plan



MARKET STREET

KEARNY STREET

**Retail 2 | Kearny Street**

1,911 SF

- Second generation convenience store
- ADA restrooms
- Historic facade



# Interior Photos





FOR LEASING INQUIRIES, CALL +1 415 772 0428

**ALEX SAGUES**

Lic. 02055525

[alex.sagues@cbre.com](mailto:alex.sagues@cbre.com)

**GRAHAM GREALISH**

Lic. 01924444

[graham.grealish@cbre.com](mailto:graham.grealish@cbre.com)

© 2024 CBRE, Inc. All rights reserved. This information has been obtained from sources believed reliable but has not been verified for accuracy or completeness. CBRE, Inc. makes no guarantee, representation or warranty and accepts no responsibility or liability as to the accuracy, completeness, or reliability of the information contained herein. You should conduct a careful, independent investigation of the property and verify all information. Any reliance on this information is solely at your own risk. CBRE and the CBRE logo are service marks of CBRE, Inc. All other marks displayed on this document are the property of their respective owners, and the use of such marks does not imply any affiliation with or endorsement of CBRE. Photos herein are the property of their respective owners. Use of these images without the express written consent of the owner is prohibited.

**CBRE**